

BLDG 280

8TH FLOOR, SUITE 819 - 4,000 SF

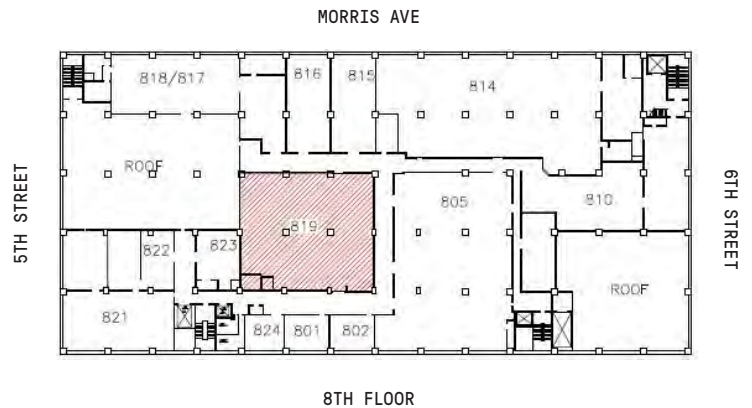
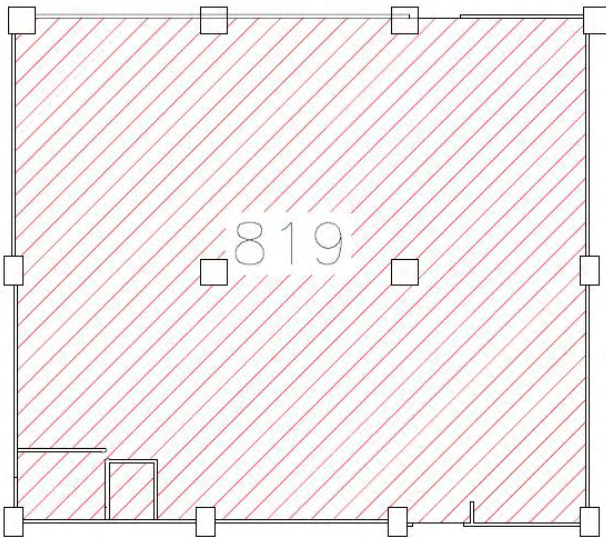
POSSESSION: IMMEDIATE



BLDG 280 LOCATION

UNIT HIGHLIGHTS

- Private bathroom
- 14 ft ceilings
- Live load: 150lbs/SF
- Plumbing installed; multi station lab sink
- Kitchenette
- Distributed electric
- 200 amps, 208 V, 3 phase



BROOKLYN | **NAVY** | **YARD**

141 FLUSHING AVENUE
BROOKLYN, NY 11205

JOSEPH COLISTA
SVP, Leasing
jcolista@bnydc.org
929-337-1205