

FOR LEASE

HOVLEY BUSINESS CENTER – 2 UNITS AVAILABLE

41-625 Eclectic Street, Palm Desert, CA



NEWMARK | PACIFIC

Steve Bernier

Managing Director

t 310-697-6652 | steve.bernier@nmrk.com

CA RE Lic. #02241836

Located conveniently at Cook Street & Hovley Lane in Palm Desert, CA, this well maintained building offers easy access to Cook Street and is **1.5 MILES** from **HWY 111** and **3.5 MILES** from the **I-10**. Ideal for a variety of light industrial, service and distribution businesses.

PROPERTY FEATURES

UNIT L-1

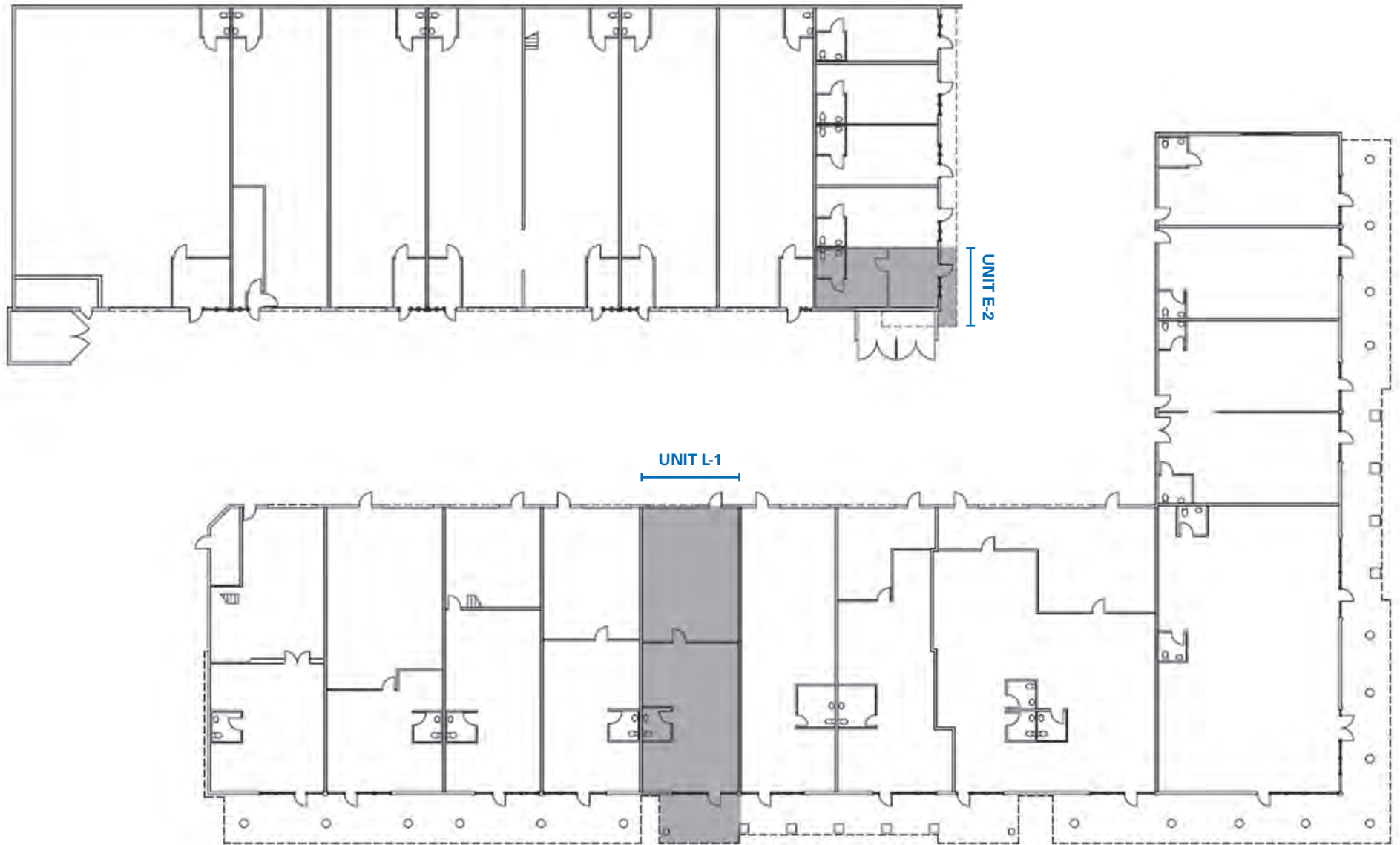
- Available August 1, 2026
- 1,947 Square Feet
- 1,442 SF Warehouse
- 505 SF Office build out
- 1 Restroom
- Garage Roll up door – 10' x 10' rear loading facility
- Asking Rent: \$1.25 PSF NNN
- Opex: \$0.29 PSF

UNIT E-2

- Available Immediately
- 533 Square Feet
- Clean improved space with HVAC and restroom
- Asking Rent: \$900/month NNN
- Opex: \$160.00/month



FLOOR PLANS





Albertsons **Starbucks Coffee**

Bristol Farms

CINEMARK
THE BEST SEAT IN TOWN

D&B **Yard House**

Cheesecake Factory **PF Chang's**

CVS pharmacy

HOBBY LOBBY **IN-N-OUT**

Starbucks Coffee **HALO'S** **PIELOGY**

macy's **jcpenney** **VICTORIA'S SECRET**

VANS **BARNES & NOBLE BOOKSELLERS** **COLD STONE ICE CREAMERY**

H&M **Bath & Body Works** **DICK'S SPORTING GOODS** **MACY'S HOLLISTER**

HOVLEY LN.

PORTOLA AVE



WALMART YOUR SUPERSTORE **planet fitness**

DOLLAR TREE **OUTBACK STEAKHOUSE**

MEN'S WEARHOUSE

COLLEGE of the DESERT

Walmart

TARGET

BEST BUY **ALDI**

ROSS DRESS FOR LESS **DSW**

tj-max **five BEER**

TRADER JOE'S **Michaels**

MONTEREY AVE

FRED WARING DR.

DEEP CANYON RD

RALPH LAUREN

chico's **ESCADA** **WOLFGANG PUCK** **Eddie's**

Subway **Habit Burger Grill** **BLAZE PIZZA**

THE COFFEE BEAN & TEA LEAF **Luna Grill**

mediterranean kitchen

Albertsons

WHOLE FOODS **NORDSTROM rack**

HomeGoods

GROCERY OUTLET Bargain Market

EL PASEO

LOUIS VUITTON **Sublime Acetate** **POTTERY BARN** **GUCCI**

Tiffany & Co. **BALMAIN** **TALBOTS**

SEPHORA **BOTTEGA LOUIE**

Tommy Bahama **WILLIAMS-SONOMA**

SULLIVAN'S STEAKHOUSE **THE BELLAGIO** **ANTHROPOLOGIE**

BURBERRY **GUCCI** **ST. JOHN**

EILEEN FISHER **Brighton** **Baccarat**

WHITE **BLACK** **OLIVER PEOPLES** **rochebobois**

BANANA REPUBLIC **COACH** **MASTRO'S STEAKHOUSE**

bebe **LUCKY * BRAND** **Apple** **M**

lululemon **athletica** **kate spade**

SPROUTS FARMERS MARKET

CVS pharmacy

Eureka!



DEMOGRAPHICS

POPULATION

5,305

1 Mile

48,985

3 Miles

96,211

5 Miles

EMPLOYEES

5,305

1 Mile

48,985

3 Miles

96,211

5 Miles

AVG HH INCOME

\$128,389

1 Mile

\$138,228

3 Miles

\$140,771

5 Miles

HOUSEHOLDS

2,278

1 Mile

23,887

3 Miles

46,795

5 Miles

FOR LEASE

HOVLEY BUSINESS CENTER – 2 UNITS AVAILABLE

41-625 Eclectic Street, Palm Desert, CA



For information, please contact:

Steve Bernier
Managing Director
t 310-697-6652
steve.bernier@nrmk.com
CA RE Lic. #02241836

NEWMARK | PACIFIC

Corporate License #01796698 The information contained herein has been obtained from sources deemed reliable but has not been verified and no guarantee, warranty or representation, either express or implied, is made with respect to such information. Terms of sale or lease and availability are subject to change or withdrawal without notice.