

AVAILABLE FOR LEASE
1764 W. OLIVE AVENUE

MERCED MARKETPLACE

MERCED, CA



Michael Arfsten
Senior Vice President
t 559-447-6233
michael@retailcalifornia.com
CA RE Lic. #01181635

Independently Owned and Operated | Corporate License #00020875 | retailcalifornia.com

FRESNO OFFICE: 7480 N. Palm Ave. #101, Fresno, CA 93711, t 559-432-6200

The distributor of this communication is performing acts for which a real estate license is required. The information contained herein has been obtained from sources deemed reliable but has not been verified and no guarantee, warranty or representation, either express or implied, is made with respect to such information. Terms of sale or lease and availability are subject to change or withdrawal without notice.

Property Description:

The subject property is located in Merced Marketplace Shopping Center on Merced's primary retail corridor, Olive Avenue. Major co-tenants include Lowe's, MOR Furniture, Dollar tree, WorkWorld, Great Clips, Starbucks, Applebee's, Round Table Pizza, Del Taco, Panda Express, and Jamba Juice.

Property Highlights:

Merced Marketplace consists of 26± acres with a GLA in excess of 250,000± square feet. It is one of the newest regional shopping centers in Merced. The center is positioned across the street from Walmart, Food Maxx, and Hobby Lobby. The center benefits from prime Olive Avenue exposure and is located in close proximity to both State Highway 99 and 59.

National retailers in the immediate area include Target, Kohls, JC Penney, Food 4 Less, Ross, 99 Cents Only, Petsmart, Michael's, and UA Theaters.

HIGHLIGHTS

- Located on Merced's Primary Retail Corridor
- Excellent Olive Avenue Visibility and Access
- Signalized Intersections on Both Sides of Center
- Positioned Within High Residential Growth Area
- High Identity Endcap Space next to High Identity Anchor Space
- Impressive Regional Draw & Daytime Population
- Merced's Newest Regional Shopping Center
- Anchored by Lowe's



1764 W. OLIVE AVENUE

MERCED, CA

PROPERTY INFORMATION

Available Space: Inline Space: 31,180± SF

Lease Rate: Please contact agent for more information.

TRAFFIC COUNTS

32,157± ADT

Olive Avenue at Austin Avenue
(Eastbound)

36,039± ADT

Olive Avenue at Loughborough Drive
(Eastbound)

Source: Kalibrate TrafficMetrix 2025

	DEMOGRAPHICS	1 MILE RADIUS	3 MILE RADIUS	5 MILE RADIUS
POPULATION	2030 Projection	15,251	93,081	117,695
	2025 Estimate	15,047	91,135	114,818
	Growth 2025-2030	1.35%	2.14%	2.51%
	Growth 2020-2025	12.38%	12.01%	6.85%
	Growth 2010-2020	5.69%	0.97%	7.40%
HOUSEHOLD	2030 Projection	5,452	29,613	36,223
	2025 Estimate	5,389	28,613	35,318
	Growth 2025-2030	1.18%	2.20%	2.56%
	Growth 2020-2025	12.27%	11.81%	6.49%
	Growth 2010-2020	4.04%	1.07%	6.58%
	<i>2025 Est. Average HH Income</i>	\$79,178	\$85,771	\$90,017

Source: Claritas 2025





1764 W. OLIVE AVENUE
MERCED, CA

AERIAL
MAP



Merced Marketplace
1720 W Olive Ave., Merced, CA

Olive Ave 31,756 ADT

Walmart
Save money. Live better.

RETAIL CALIFORNIA
Commercial Real Estate Brokerage
A Division of Pearson Realty

©2023 Retail California. All rights reserved. We believe the information contained herein to be correct. It is obtained from sources which we regard as reliable, but we assume no liability for errors or omissions.

1764 W. OLIVE AVENUE
MERCED, CA

AERIAL
MAP

Olive Ave. Retail Competition
MERCED, CA



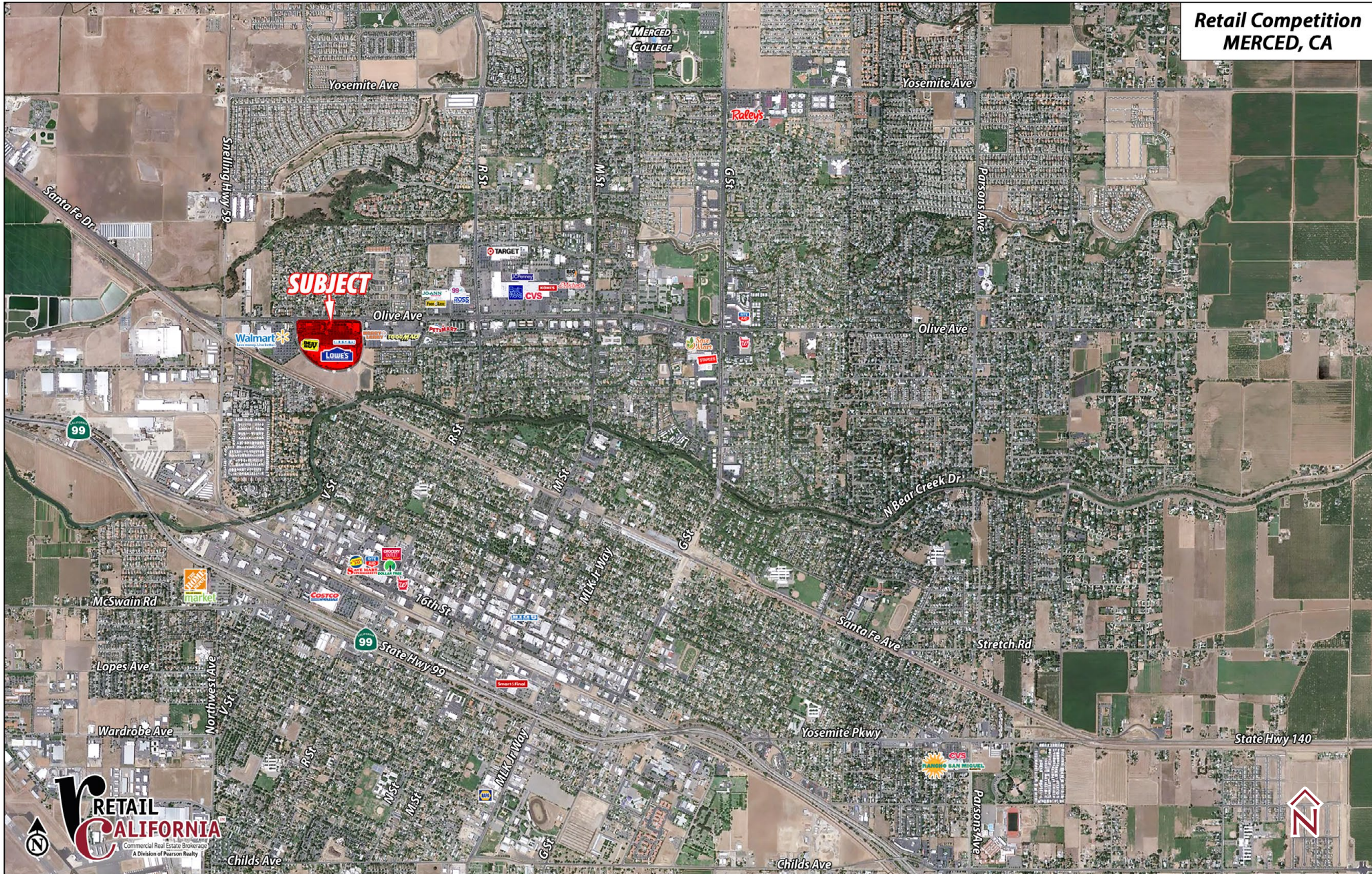
AVAILABLE



1764 W. OLIVE AVENUE
MERCED, CA

AERIAL
MAP

Retail Competition
MERCED, CA



AVAILABLE FOR LEASE
1764 W. OLIVE AVENUE

MERCED MARKETPLACE

MERCED, CA

For information, please contact:

Michael Arfsten

Senior Vice President

t 559-447-6233

michael@retailcalifornia.com

CA RE Lic. #01181635



Independently Owned and Operated
Corporate License #00020875
retailcalifornia.com

FRESNO OFFICE
7480 N. Palm Ave. #101
Fresno, CA 93711
t 559-432-6200

The distributor of this communication is performing acts for which a real estate license is required. The information contained herein has been obtained from sources deemed reliable but has not been verified and no guarantee, warranty or representation, either express or implied, is made with respect to such information. Terms of sale or lease and availability are subject to change or withdrawal without notice.