

**±1,805 SF INDUSTRIAL SUITE FOR SUBLEASE AT
KEARNY MESA WEST BUSINESS PARK**



**7370 OPPORTUNITY RD., SUITE L
SAN DIEGO, CA 92111**

Greg Marx, SIOR
Senior Vice President | Lic.#01940696
858.458.3302 | gmarx@voitco.com

Carter Shannon
Associate | Lic.#02244724
858.458.3303 | cshannon@voitco.com

Voit
REAL ESTATE SERVICES

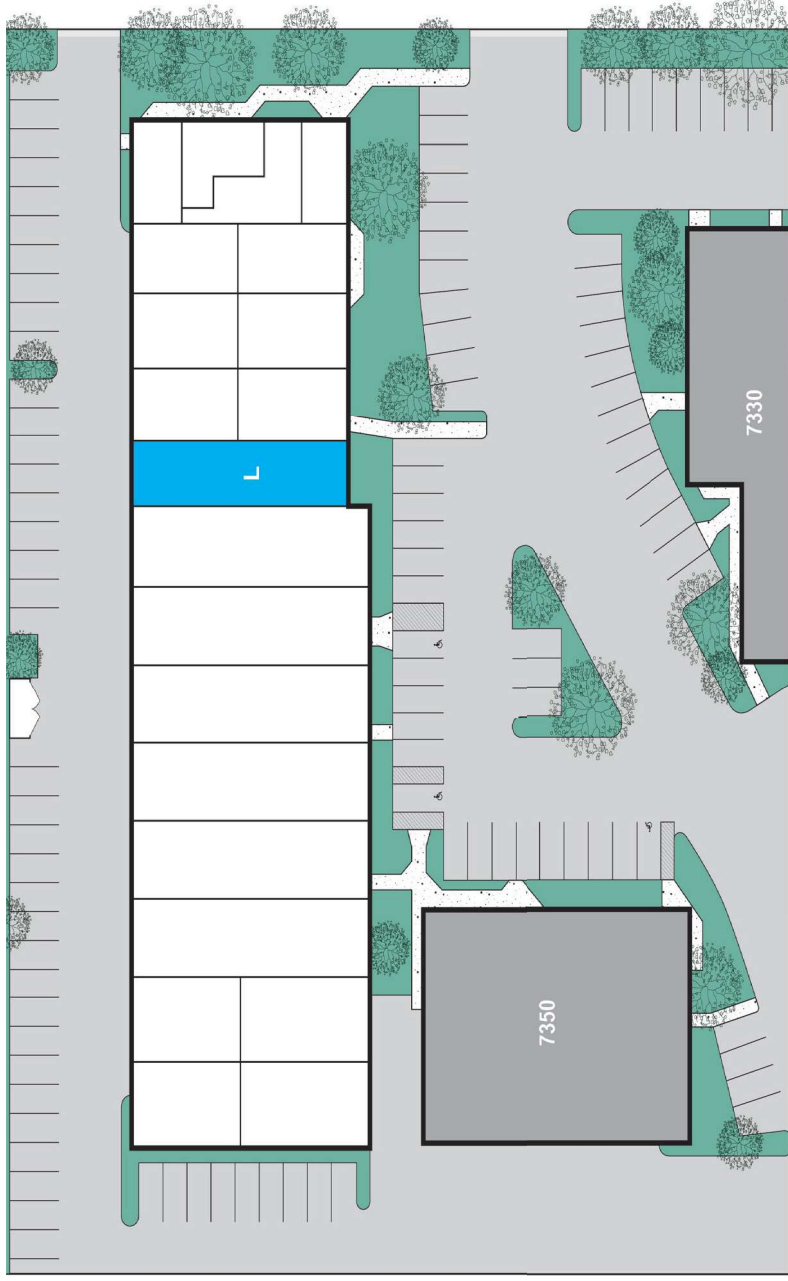
PROJECT FEATURES

- Multi-Tenant Industrial/
Flex Park totaling 210,916 SF
- Walking Distance to
Restaurants, Retail &
Service Amenities
- Approximately 2.87/1,000
SF Parking Ratio
- Excellent Freeway Access
Located Near I-805, I-15,
and Highways 52 and 163
- Located within the City of
San Diego Enterprise
Zone

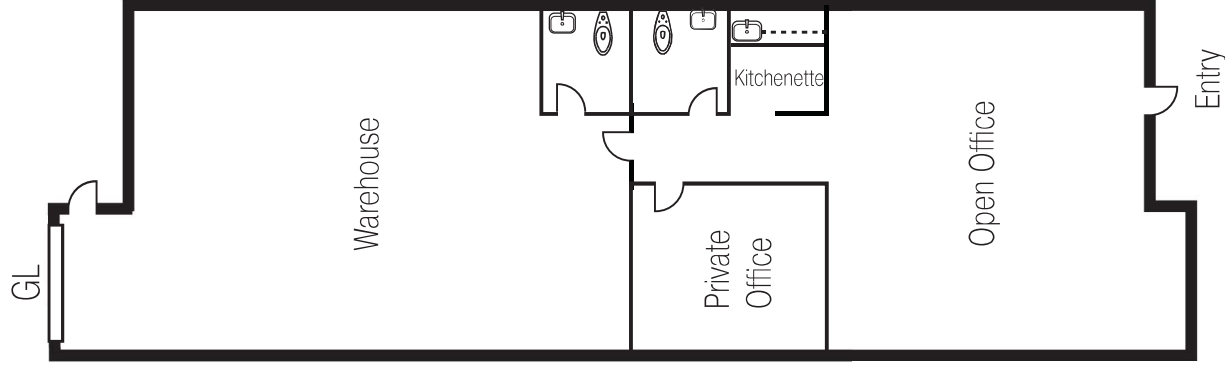
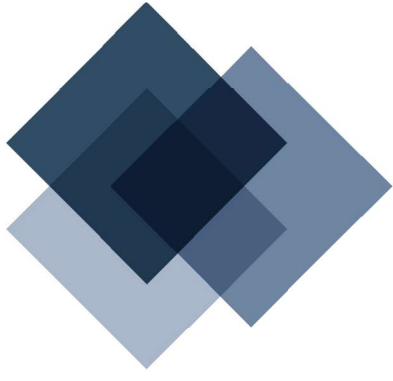


AVAILABILITY

ADDRESS	SIZE	RENT	AVAILABLE	TO SHOW	COMMENTS
7370 Opportunity Road Suite L	1,805 SF	\$2.24 MG	Immediately	Appointment, Call Broker.	50% Office; 1 Grade Level Door.

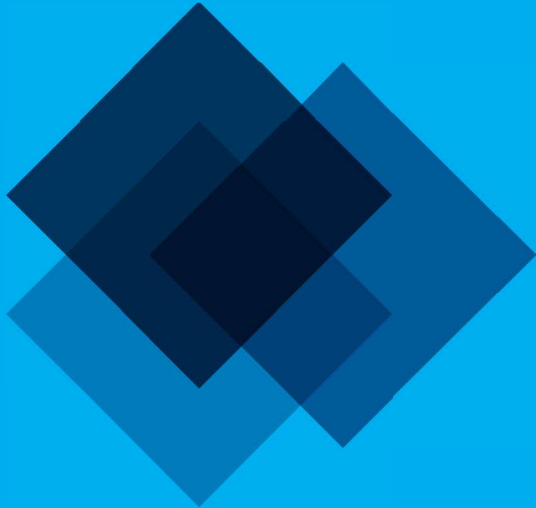


7370 OPPORTUNITY ROAD SUITE L



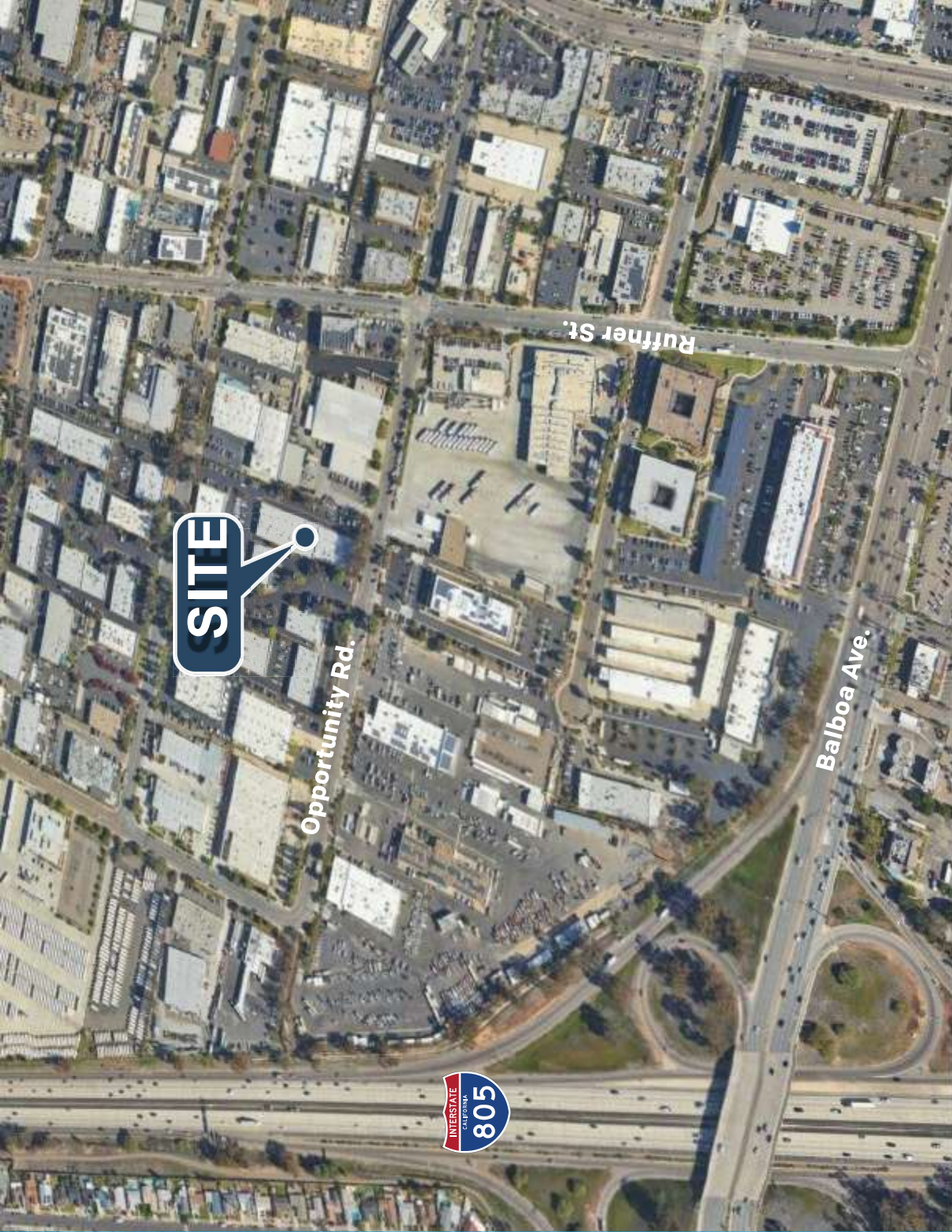
SIZE	1,805 SF
LEASE RATE	\$2.24 MG
AVAILABLE	Immediately
TO SHOW	Appointment. Call Broker.
COMMENTS	50% Office; 1 Grade Level Door.





7370
OPPORTUNITY RD.
SUITE L
SAN DIEGO, CA 92111

Voit
REAL ESTATE SERVICES



SITE

Opportunity Rd.

Ruffner St.

Balboa Ave.



Greg Marx, SIOR
Senior Vice President | Lic.#01940696
858.458.3302 | gmarx@voitco.com

Carter Shannon
Associate | Lic.#02244724
858.458.3303 | cshannon@voitco.com

4180 La Jolla Village Drive, Suite 100, La Jolla, CA 92037 | Lic #01991785 | www.voitco.com

Licensed as Real Estate Salespersons by the CA Bar of Real Estate. ©2025 Voit Real Estate Services, Inc. All Rights Reserved. The information contained herein has been obtained from sources we deem reliable. While we have no reason to doubt its accuracy, we do not guarantee it.