



5 St. Helen's Place, London, EC3A 6AB

To Let | 4,734 sq ft

Fully Fitted Plug & Play office in a Prime City Location

5 St. Helen's Place, London, EC3A 6AB

Summary

- Rent: £56.60 per sq ft Passing rent for Assignment: £56.60.
- Business rates: £28.88 per sq ft 2025/26 Valuation
- Service charge: £16.74 per sq ft
- Lease: Assignment

Further information

- [View details on our website](#)

Contact & Viewings



Robert Rooney
07469 403 225 | 07469 403 225
robert.rooney@realestate.bnpparibas



Ben Rainbow
| 07909 487 189
ben.rainbow@realestate.bnpparibas



Key Points

- Fully fitted and Furnished to a high standard
- 4x meeting rooms
- Impressive reception with commissionaire
- 2x automatic passenger lifts
- LG7 compliant lighting
- Air conditioning
- Raised floors
- Column free floorplate
- Male & female WCs on each floor
- Showers and bicycle storage

Description

The 3rd floor at 5 St Helen's place provides a fully fitted plug & play office space comprising of 3 meeting rooms, board room and 34 desks. Terms available via sublease or assignment with a lease expiry of January 1st 2028.

Location

5-7 St. Helen's Place, EC3 is located on the eastern end of Bishopsgate within the Conservation Area of St. Helen's Place. Liverpool Street and bank stations are a short walk away for Mainline, Underground and Crossrail train services.

BNP Paribas Real Estate Advisory & Property Management UK Limited for themselves and for the vendor(s) or lessor(s) of this property whose agents they are, give notice that: 1. These particulars do not constitute, nor constitute any part of, an offer or contract. 2. None of the statements contained in these particulars as to the property are to be relied on as statements or representations of fact. 3. Any intending purchaser or lessee must satisfy themselves by inspection or otherwise as to the correctness of each of the statements contained in these particulars. 4. The intending purchaser or lessee must satisfy themselves as to the condition of the property, the quality and nature of the services and facilities supplied to the property, and that the property has all necessary legal and regulatory consents or permissions. 5. The vendor(s) or lessor(s) do not make or give and neither BNP Paribas Real Estate Advisory & Property Management UK Limited nor any person in their employment has any authority to make or give, any representation or warranty whatever in relation to this property. BNP Paribas Real Estate Advisory & Property Management UK Limited do not accept any liability for any statement made in these particulars. Unless otherwise stated all prices and rents are quoted exclusive of VAT. These details are believed to be correct at the time of compilation but may be subject to subsequent amendment. June 2022. Dec 2025.



The building is located in the heart of the City tower cluster with access to an array of different retail and F&B amenities at Leadenhall Market and The Royal Exchange.

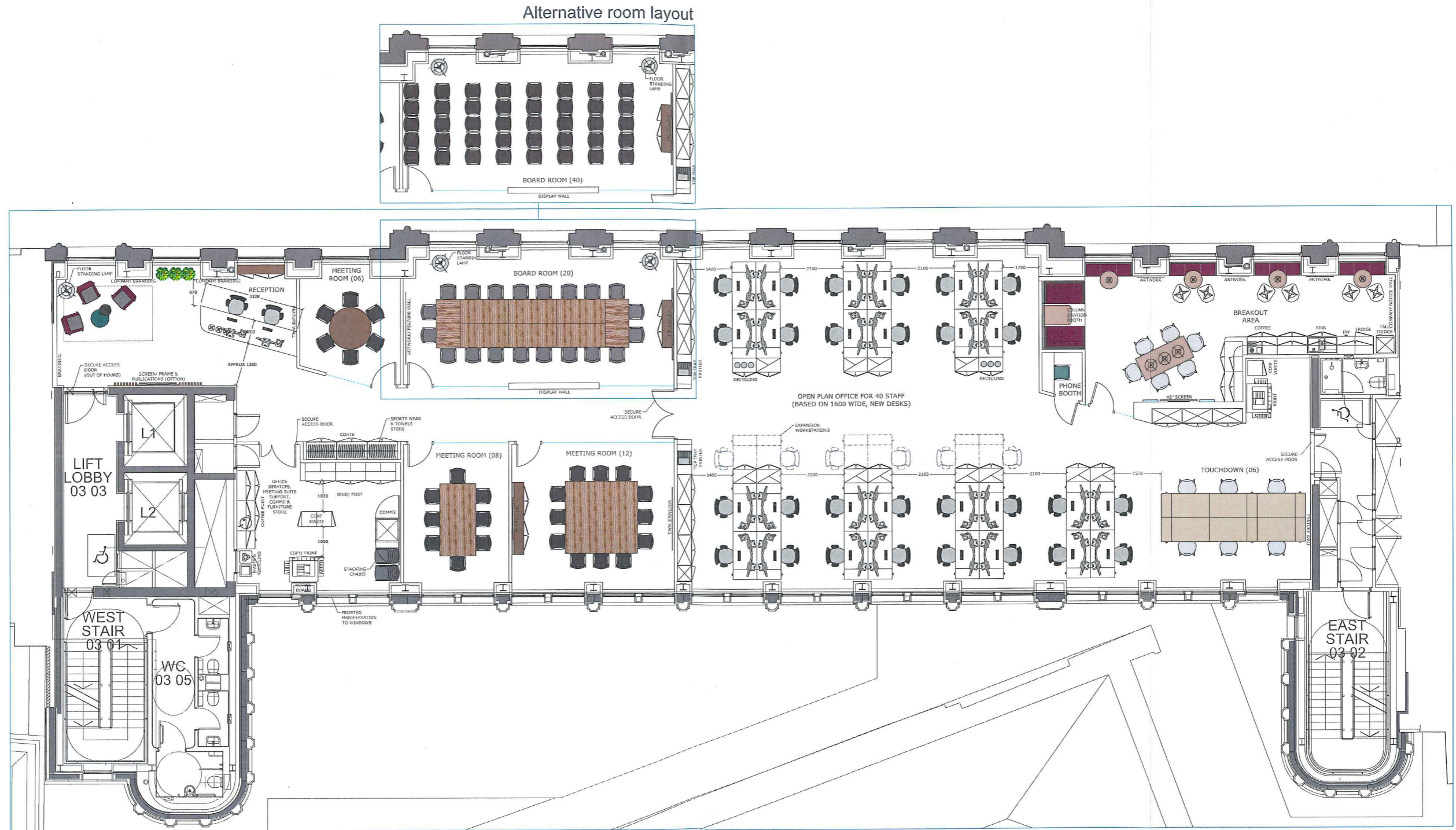
Accommodation

Name	sq ft	sq m	Availability
3rd - Cat B	4,734	439.80	Available
Total	4,734	439.80	





5 St. Helen's Place
 General Arrangement: Option 01
01.1 GA Day 1 A2



NOTES:

THIS DRAWING IS THE COPYRIGHT AND PROPERTY OF **WORKPLACE CREATIONS** IT MUST NOT BE COPIED OR PUBLISHED WITHOUT WRITTEN CONSENT AND MUST BE RETURNED TO US UPON REQUEST.

DO NOT SCALE FROM THIS DRAWING. ALL MEASUREMENTS MUST BE SITE CHECKED BEFORE THE COMMENCEMENT OF ANY WORK.

Signed.....Date.....

GENERAL NOTES:

Revisions :			Revisions :			Revisions :		
No:	Date:	Description of Works:	No:	Date:	Description of Works:	No:	Date:	Description of Works:
A	13.11.17	Updates to general arrangement.						
B	20.11.17	Updates to general arrangement.						
C	27.11.17	Updates to general arrangement.						
D	05.12.17	Updates to comms unit and space.						
E	12.12.17	Updates to reception & meeting room layouts.						

workplacecreations

Vintage Yard
 59 Bermondsey Street
 London
 SE1 3XF

FOR ISSUE

tel. 020 7407 2390
 fax. 020 7378 6033
 email. info@workplace-creations.co.uk
 www. www.workplace-creations.co.uk

Client: Clarke Willmott **Drawing No:** CW_5SHP_03 GA **Scale:** 1:100 @A2
Project: 3rd floor, 5 St. Helen's Place, London **Revision No:** E **Drawn By:** Kford
Title: 01.1 GA Day 1 A2 **Date of Origin:** 26.09.17 **Checked By:** Sjenkins