

FOR LEASE

MEDICAL & OFFICE SUITES *from 824 - 9,847 SF*

**1820 FULLERTON AVENUE
CORONA, CALIFORNIA**



NEWMARK



FOR LEASE

MEDICAL & OFFICE SUITES *from 824 - 9,847 SF*

1820 FULLERTON AVENUE CORONA, CALIFORNIA

HIGHLIGHTS

- ±51,679 SF, 3-story Office Building
- Ideal for all medical practices including: specialists, primary care, physical therapy, general medical office, dental and optometry
- 2 elevator service
- |;|Ample, medical approved parking
- Adjacent to Corona Rehabilitation Hospital
- Easy access to the 91 and 15 freeways
- Surrounded by numerous restaurants, retail shopping and lodging
- Major corridor with high traffic volume will bring excellent visibility to your practice
- Close to residential neighborhoods including senior housing and assisted living
- Strong demographics with good insurance payer mix
- Build to suit suites available
- Common area renovations include new corridor lighting and flooring, new entrance plaza with sitting area, patient drop-off zone, updated ADA access and new interior finishes



CORONA PROFESSIONAL CENTER is a 51,679 SF landmark mixed use medical property located in the City of Corona’s medical corridor. Under new ownership; the property has just undergone an extensive interior and exterior remodel including all new high-end common area finishes, building systems upgrades, a remodeled entryway with new hardscape and landscaping throughout. Corona Professional Center is the ideal location for all medical providers and specialists of all types with flexible floor plates, suite layouts and sizes on 3 elevator served floors. Easily accessible by both the 91 and 15 freeways, Corona Professional Center is ideally located in one of the Inland Empire’s most desirable demographics and only 1.5 miles from the Corona Regional Medical Center.

AVAILABLE SUITES

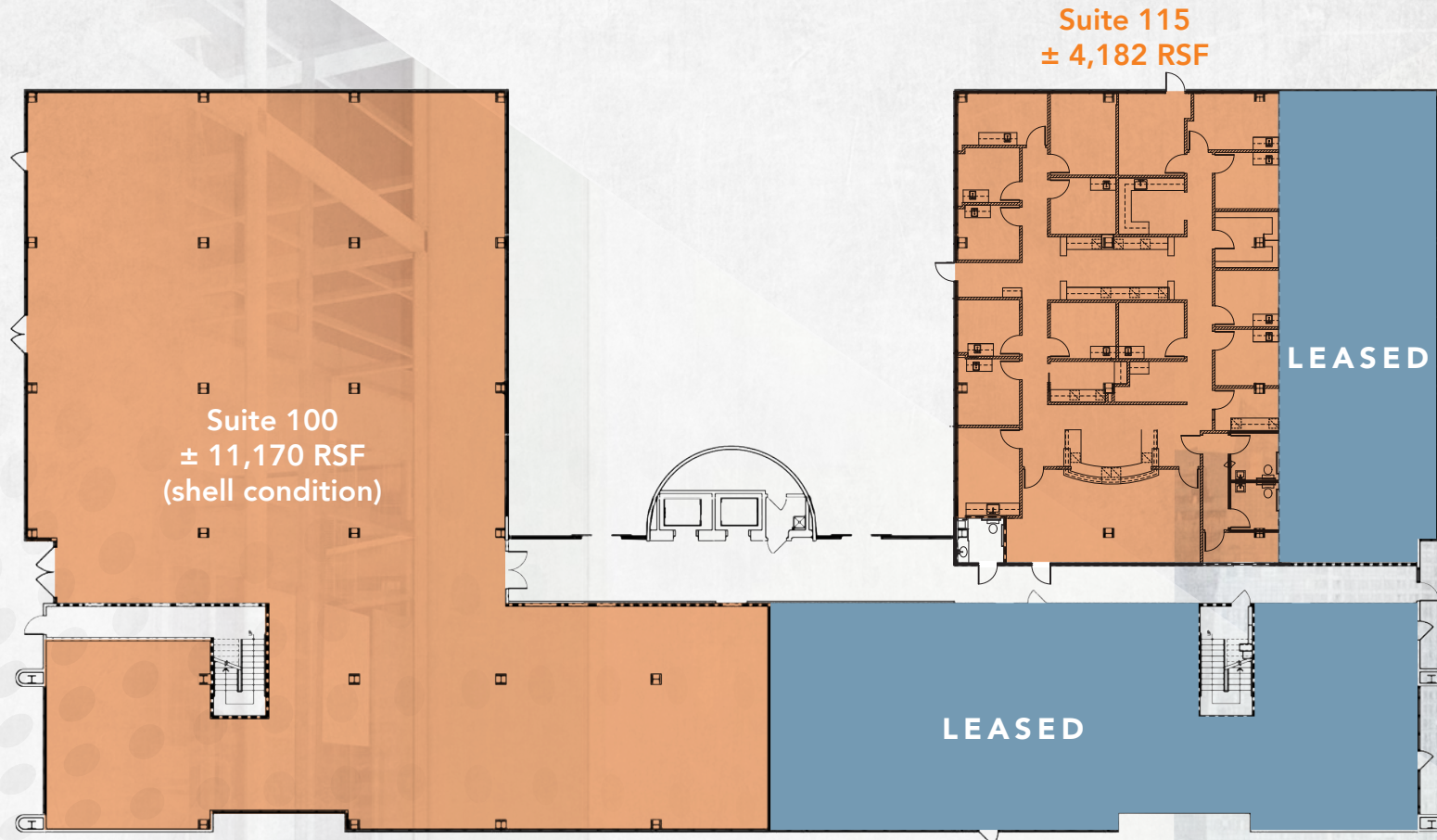
SUITE	USE	SIZE
100	Office/Medical (Sublease)	11,170 RSF
115	Medical (Sublease)	4,132 RSF
230	Medical	824 RSF
300	Office/Medical	2,500 - 9,847 RSF



FOR LEASE

MEDICAL & OFFICE SUITES *from 824 - 9,847 SF*

1820 FULLERTON AVENUE
CORONA, CALIFORNIA



1st

FLOOR PLAN

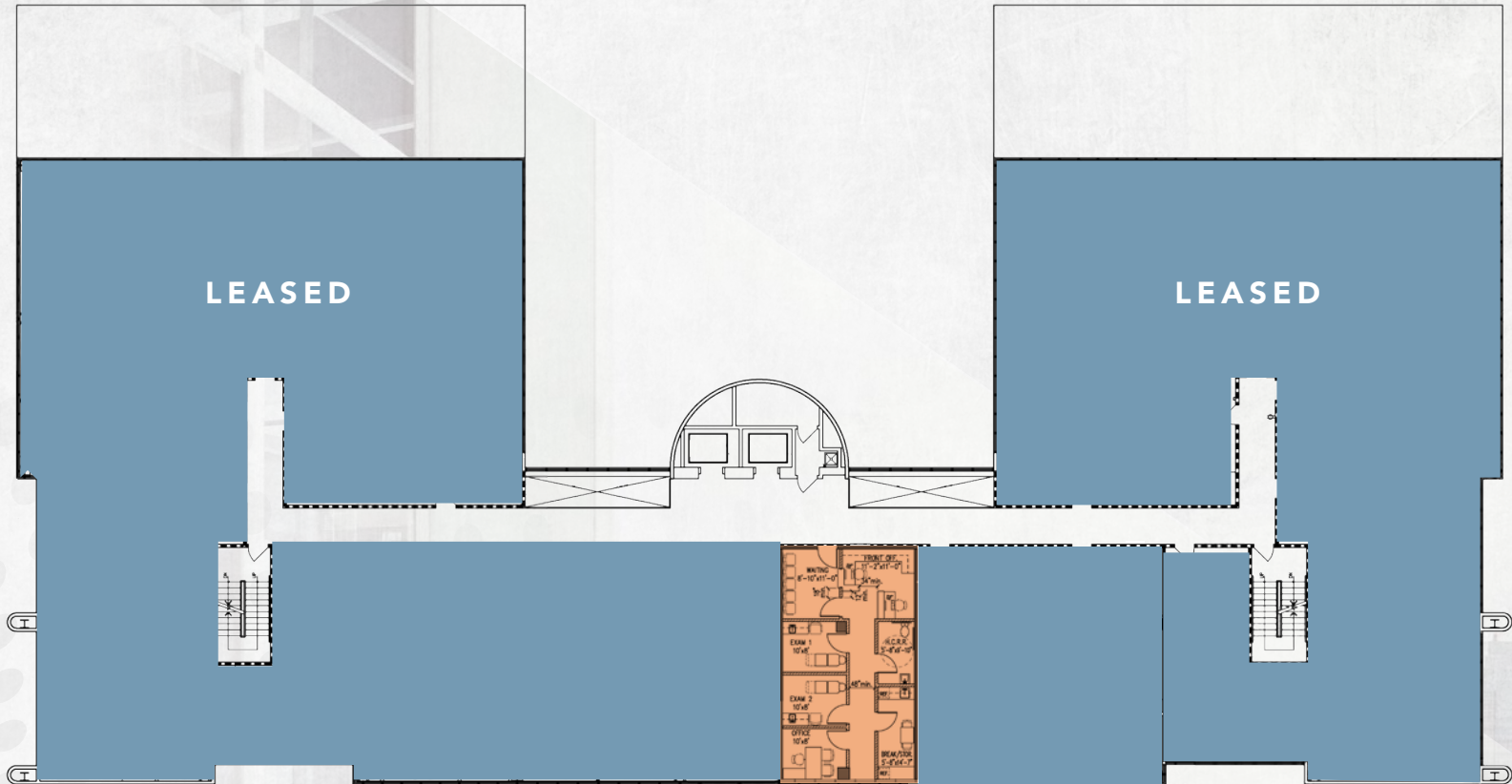
Suite 100 - Sublease Available - 11,170 RSF

Suite 115 - Medical Sublease Available - 4,182 RSF

FOR LEASE

MEDICAL & OFFICE SUITES *from* 824 - 9,847 SF

1820 FULLERTON AVENUE
CORONA, CALIFORNIA



Suite 230

2nd

FLOOR PLAN

Suite 230 Available - 824 RSF | \$2.75 NNN



SURROUNDING AREA

1820 FULLERTON AVENUE, CORONA, CALIFORNIA



E 6th St

E Grand Blvd

Rimpau Ave

Fullerton Ave

Kellogg Ave

Garretson Ave

Magnolia Ave

California Ave

Old Temescal Rd

E Ontario Ave



Corona Rehabilitation Center



NEWMARK





FOR LEASE

MEDICAL & OFFICE SUITES *from* 824 - 9,847 SF

1820 FULLERTON AVENUE
CORONA, CALIFORNIA



John Daciolas
Senior Managing Director

t 909-974-4029
m 909-645-1088
john.daciolas@nrmk.com
CA RE Lic. #01232203



John Ewart
Senior Managing Director

t 909-974-4064
m 951-312-9616
john.ewart@nrmk.com
CA RE Lic. #00859319

CORPORATE LICENSE #01355491

The distributor of this communication is performing acts for which a real estate license is required. The information contained herein has been obtained from sources deemed reliable but has not been verified and no guarantee, warranty or representation, either express or implied, is made with respect to such information. Terms of sale or lease and availability are subject to change or withdrawal without notice.

NEWMARK

3281 East Guasti Road, Suite 370
Ontario, CA 91761



CORONA
PROFESSIONAL CENTER