

**BUILDING REFRESH
UNDERWAY!**

**2290
N FIRST ST**

SAN JOSE, CA



OFFICE FOR LEASE

8 Total Configurations ±1,660 SF - 9,208 SF

NEWMARK

Gabe Regalado

408.455.4913

gabe.regalado@nrmk.com

CA RE LIC. #02008286

Luke Allard

408.476.6517

luke.allard@nrmk.com

CA RE LIC. #01910058



Roger Fields

650.207.1610

Peninsula Land
and Capital

MARKET READY STANDARD SUITE



2290
N FIRST ST



NEWMARK



2290 N FIRST STREET, SAN JOSE | 2

CURRENT AVAILABILITY

Suite 102 ±9,208 SF

Suite 203 ±2,039 SF

Suite 204 ±2,099 SF

Suite 205 ±2,340 SF

Suite 208 ±3,696 SF

Suite 310 ±1,660 SF

Can be combined
to ±4,138 SF

Can be combined
to ±6,036 SF

Available
June 2026



2290
N FIRST ST





PROPERTY HIGHLIGHTS



Prominent Corner
Location in North
San Jose



Abundant
Amenities within
Walking Distance



±3.8/1,000
Parking



Immediate Access to
Highways 101, 87 &
San Jose Airport



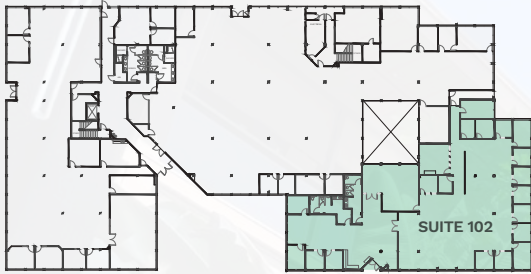
VTA Light Rail Station
Immediately in Front of
the Building



AT&T Fiber Lit
Sean Mendez
sm503w@att.com | 925.487.2127
Comcast Fiber Lit
Scott Yee
Scott_Yee@comcast.com | 925.967.1260

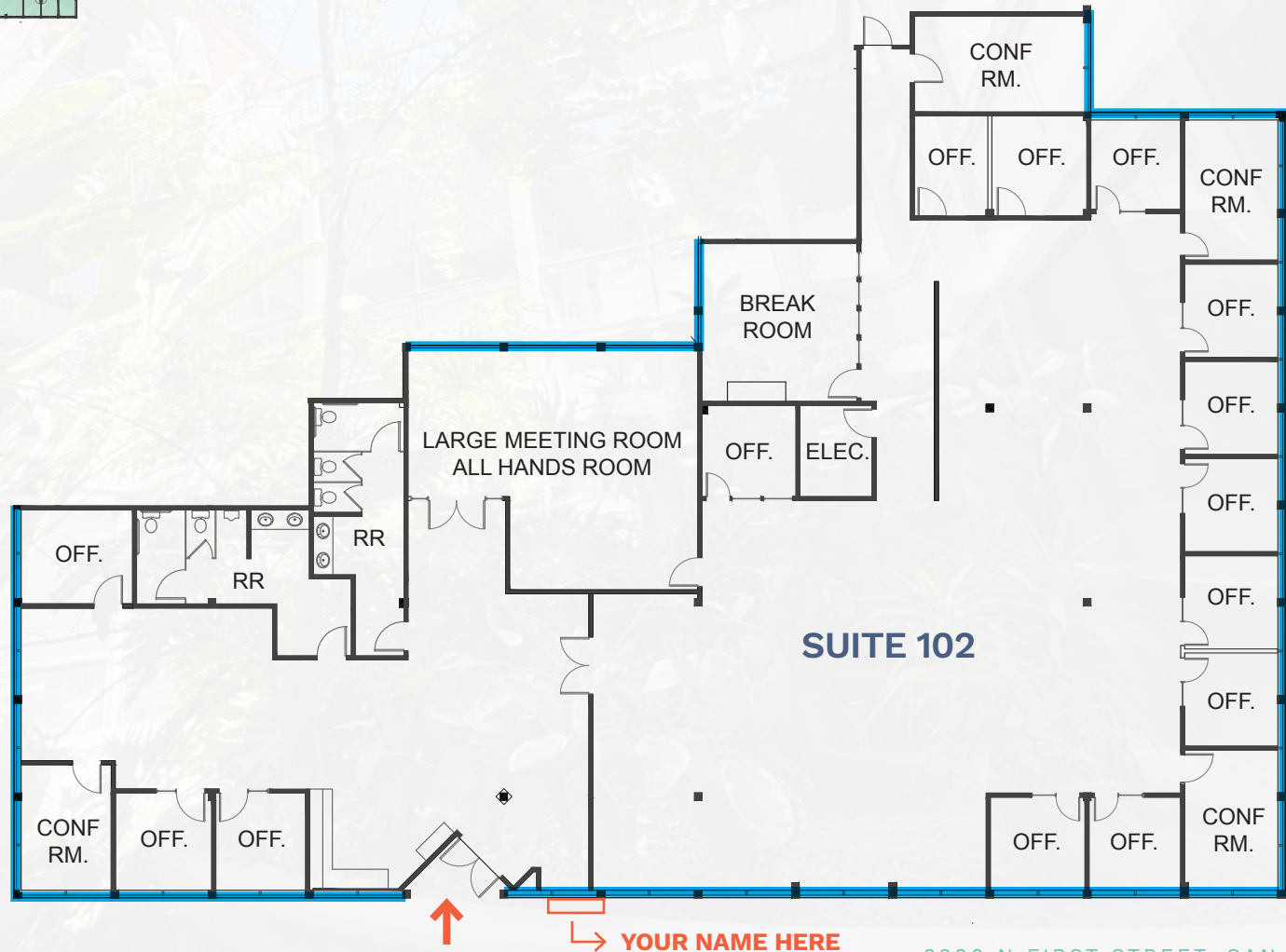
FLOOR PLAN 1ST FLOOR

SUITE 102: ±9,208 SF



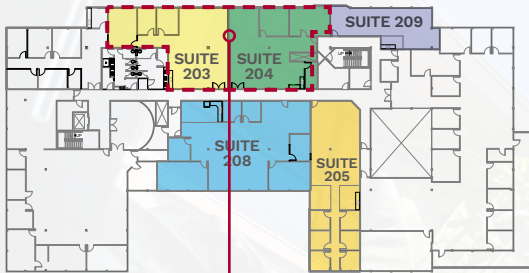
FEATURES

- 13 PRIVATE OFFICES
- 4 CONFERENCE ROOMS
- IT/SERVER ROOM
- BUILDING SIGNAGE
- ATRIUM VIEW
- BREAK ROOM
- ALL HANDS ROOM
- COPY/SUPPLY ROOM
- AMPLE WINDOW LINE
- PRIVATE RESTROOMS
- 250 AMPS POWER
- HYPOTHETICAL LAYOUT



FLOOR PLAN 2ND FLOOR

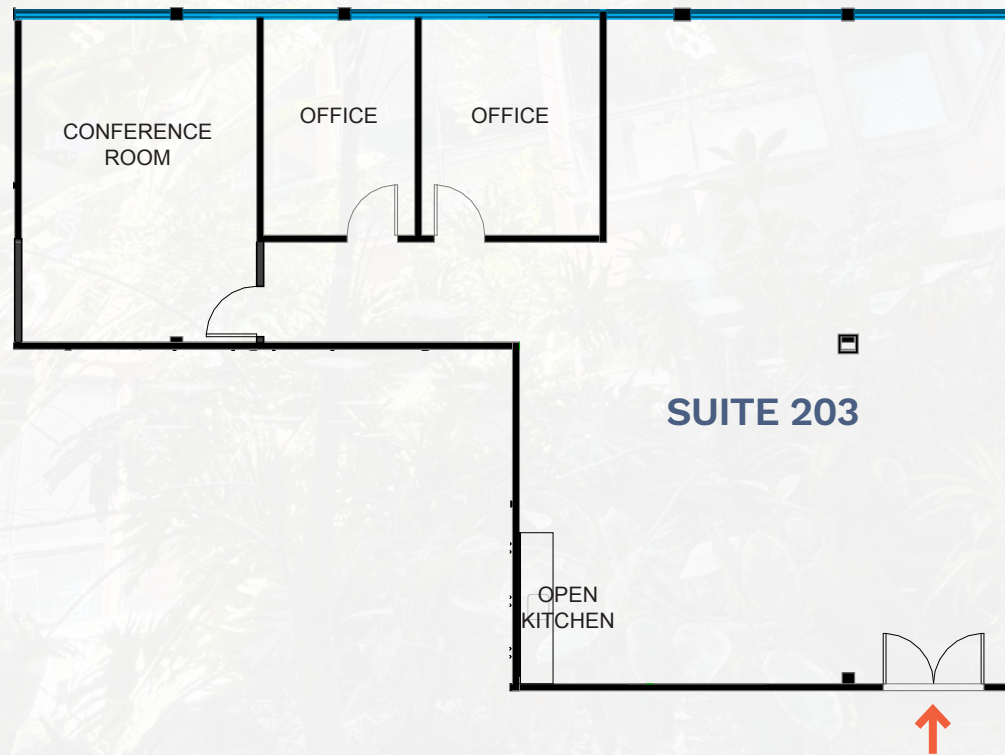
SUITE 203: ±2,039 SF*



FEATURES

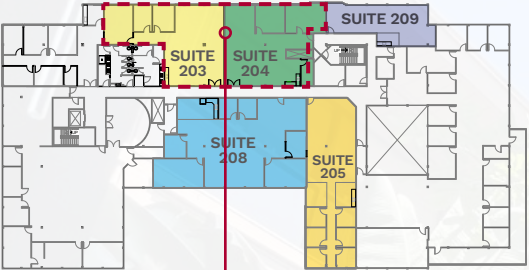
- 2 PRIVATE OFFICES
- 1 CONFERENCE ROOM
- OPEN KITCHEN
- REMAINDER OPEN OFFICE
- AMPLE WINDOW LINE

*Can be combined
with Suite 204 to
accommodate ±4,138 SF



FLOOR PLAN 2ND FLOOR

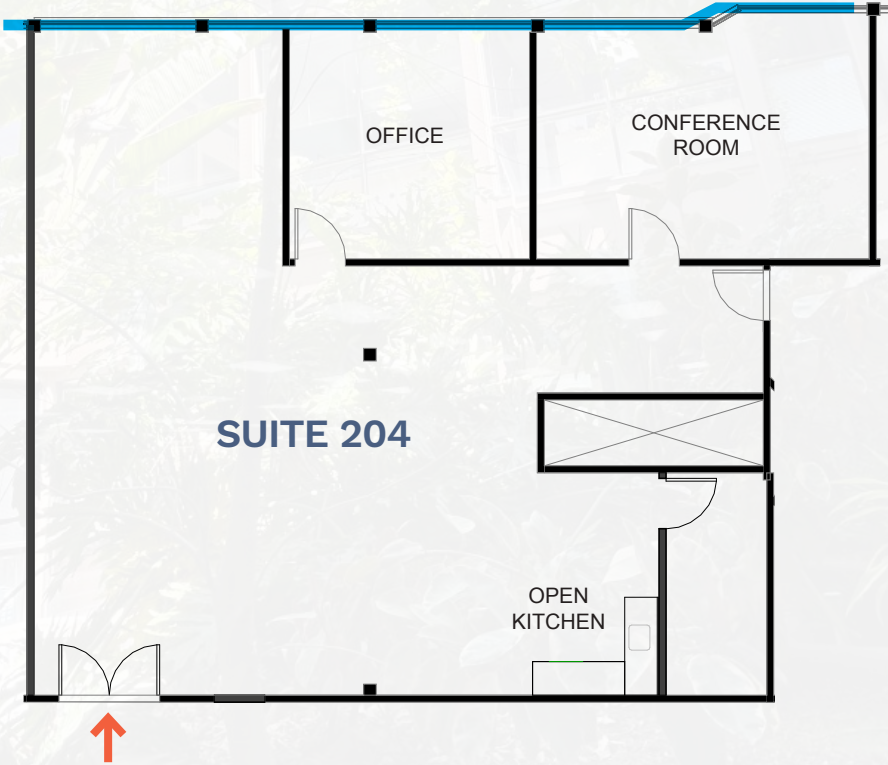
SUITE 204: ±2,099 SF*



FEATURES

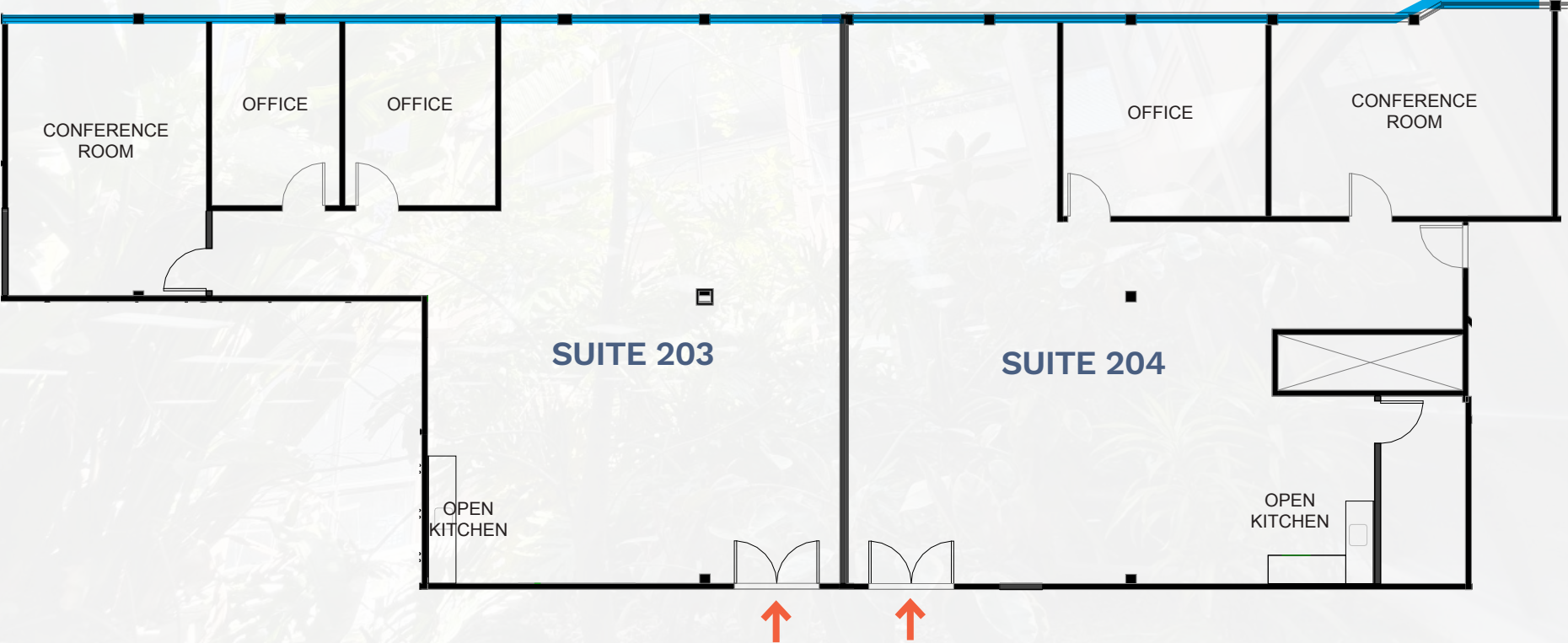
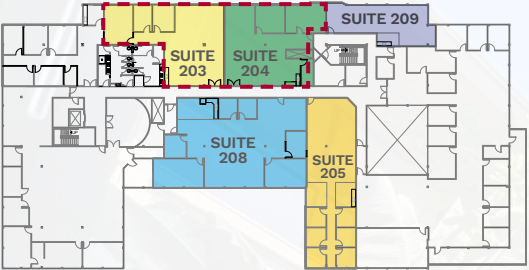
- 1 PRIVATE OFFICE
- 1 CONFERENCE ROOM
- OPEN KITCHEN
- REMAINDER OPEN OFFICE
- AMPLE WINDOW LINE

*Can be combined with Suite 203 to accommodate ±4,138 SF



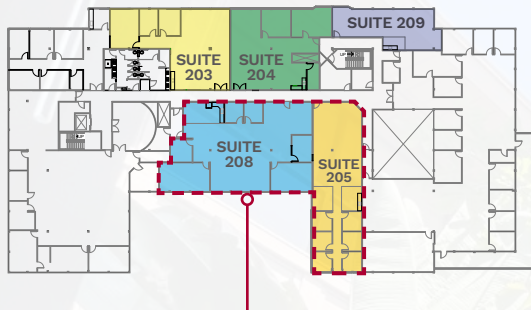
FLOOR PLAN 3RD FLOOR

SUITE 203 & 204: ±4,138 SF

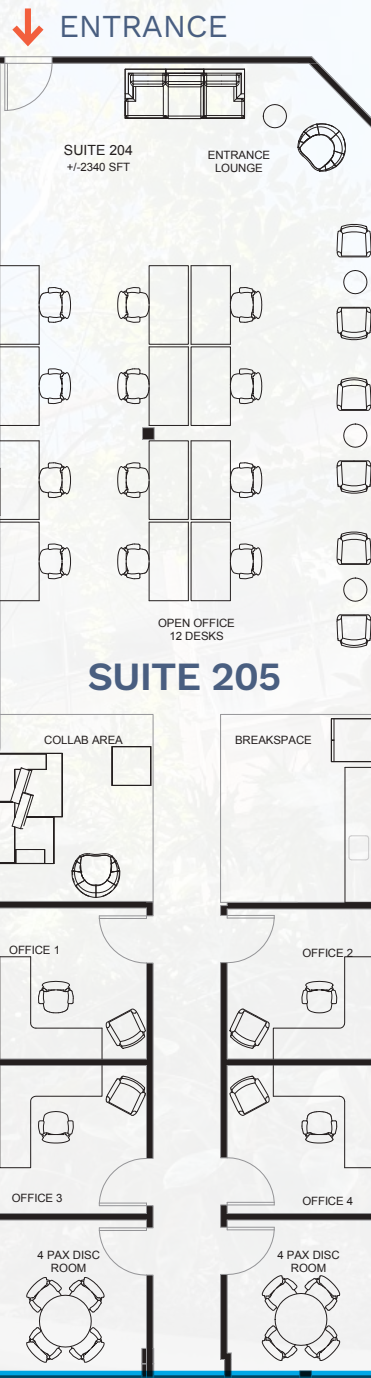


FLOOR PLAN 2ND FLOOR

SUITE 205: ±2,340 SF*



*Can be combined with
Suite 208 to accommodate
±6,036 SF

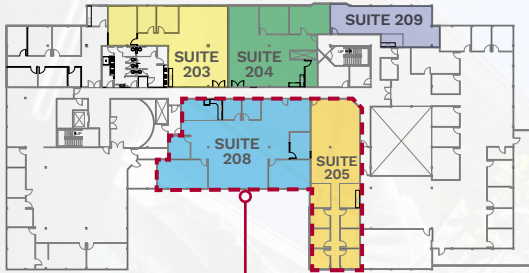


FEATURES

- 4 PRIVATE OFFICES
- 2 SMALL CONFERENCE ROOMS
- BREAK AREA
- REMAINDER OPEN OFFICE
- WINDOW LINE ■

FLOOR PLAN 2ND FLOOR

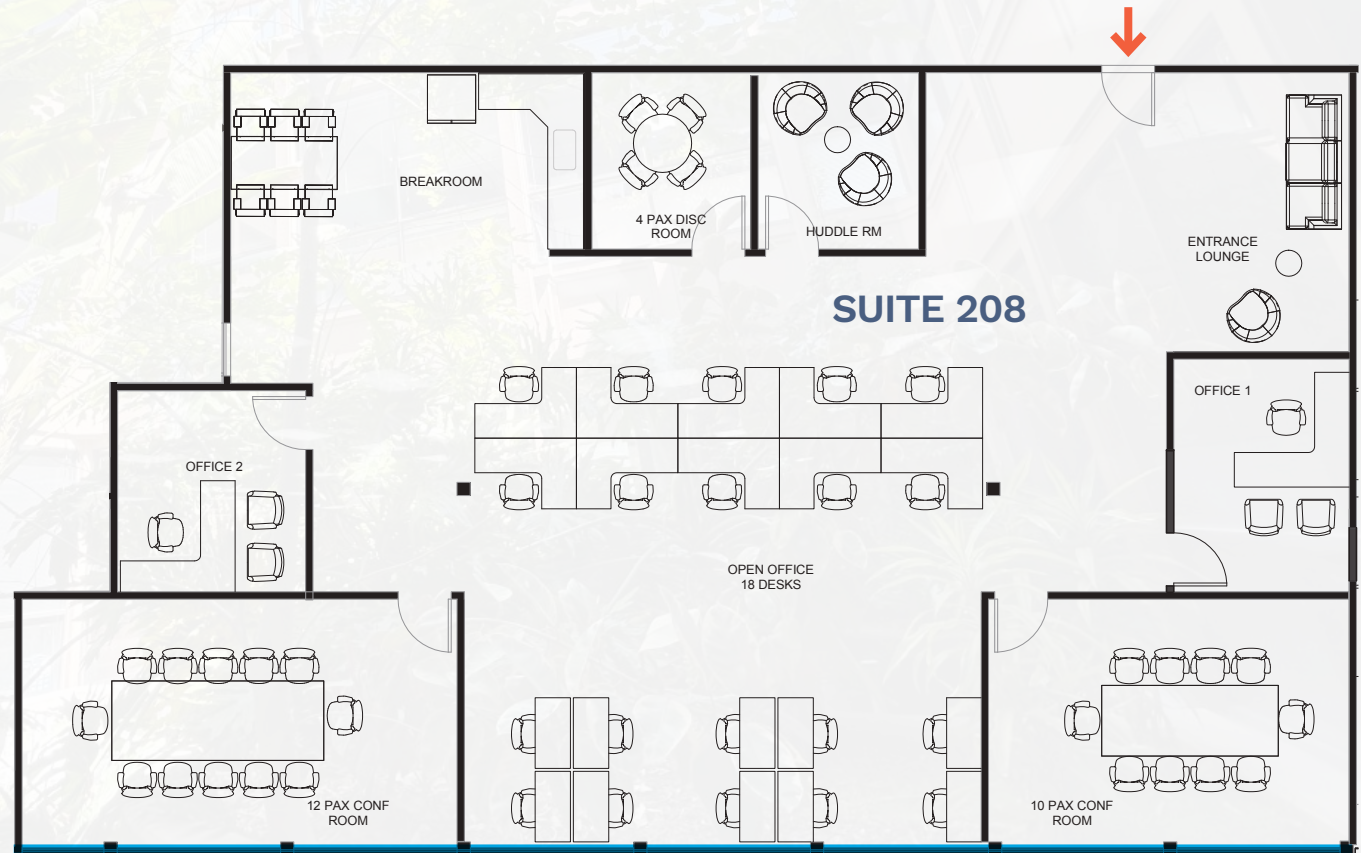
SUITE 208: ±3,696 SF*



FEATURES

- 2 PRIVATE OFFICES
- 2 CONFERENCE ROOMS
- 2 HUDDLE ROOMS
- BREAK AREA
- REMAINDER OPEN OFFICE
- AMPLE WINDOW LINE

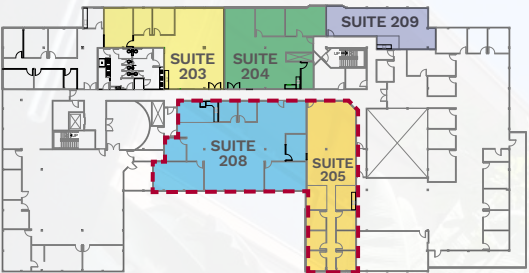
*Can be combined with
Suite 205 to accommodate
±6,036 SF



*PROPOSED FLOORPLAN

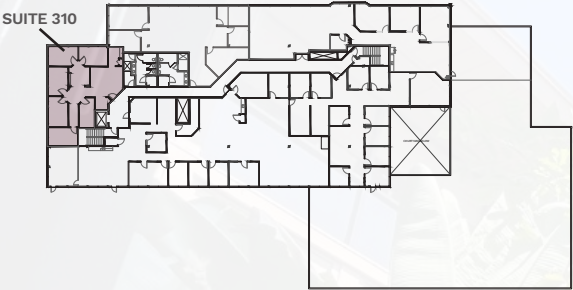
FLOOR PLAN 2ND FLOOR

SUITE 205 & 208: ±6,036 SF



FLOOR PLAN 3RD FLOOR

SUITE 310: ±1,660 SF



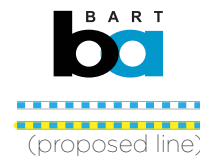
FEATURES

- 3 PRIVATE OFFICES
- 2 CONFERENCE ROOMS
- STORAGE ROOM
- KITCHEN



NEARBY TRANSIT NETWORK

2290
N FIRST ST



NEARBY AMENITIES

2290
N FIRST ST





2290 N FIRST ST

SAN JOSE, CA

3055 Olin Avenue, Suite 2200, San Jose, CA 95128 | The distributor of this communication is performing acts for which a real estate license is required. The information contained herein has been obtained from sources deemed reliable but has not been verified and no guarantee, warranty or representation, either express or implied, is made with respect to such information. Terms of sale or lease and availability are subject to change or withdrawal without notice. 9975245513 | 04/26

NEWMARK

Gabe Regalado

408.455.4913

gabe.regalado@nmrk.com

CA RE LIC. #02008286

Luke Allard

408.476.6517

luke.allard@nmrk.com

CA RE LIC. #01910058



Roger Fields

650.207.1610

Peninsula Land
and Capital