

Available for lease!

2007 - 2121 E Palmdale Blvd
Palmdale, California



DAVID MALING
Principal
213.453.1770 Call or Text
david.maling@avisonyoung.com
License No. 01139115

**AVISON
YOUNG**

Location Overview

DEMOGRAPHICS | 2024 | 3-MILE RADIUS

48K

POPULATION

\$87K

AVG HOUSEHOLD
INCOME

17K

HOUSEHOLDS

About Palmdale, California

Palmdale, California, is a city in the Antelope Valley with a prime location that offers easy access to major highways and a growing economy. Known for its wide-open spaces and beautiful desert landscapes. Palmdale provides an attractive environment for businesses to flourish. With a strong mix of industrial, commercial, and residential development, the area is perfect for companies seeking both accessibility and expansion opportunities. The city is strategically positioned between Los Angeles and the high desert, making it an ideal hub for businesses looking to connect with regional and national markets.





Leasing terms

SF AVAILABLE: 1,878 ± SF

ASKING RENT: \$ 1.00 NNN

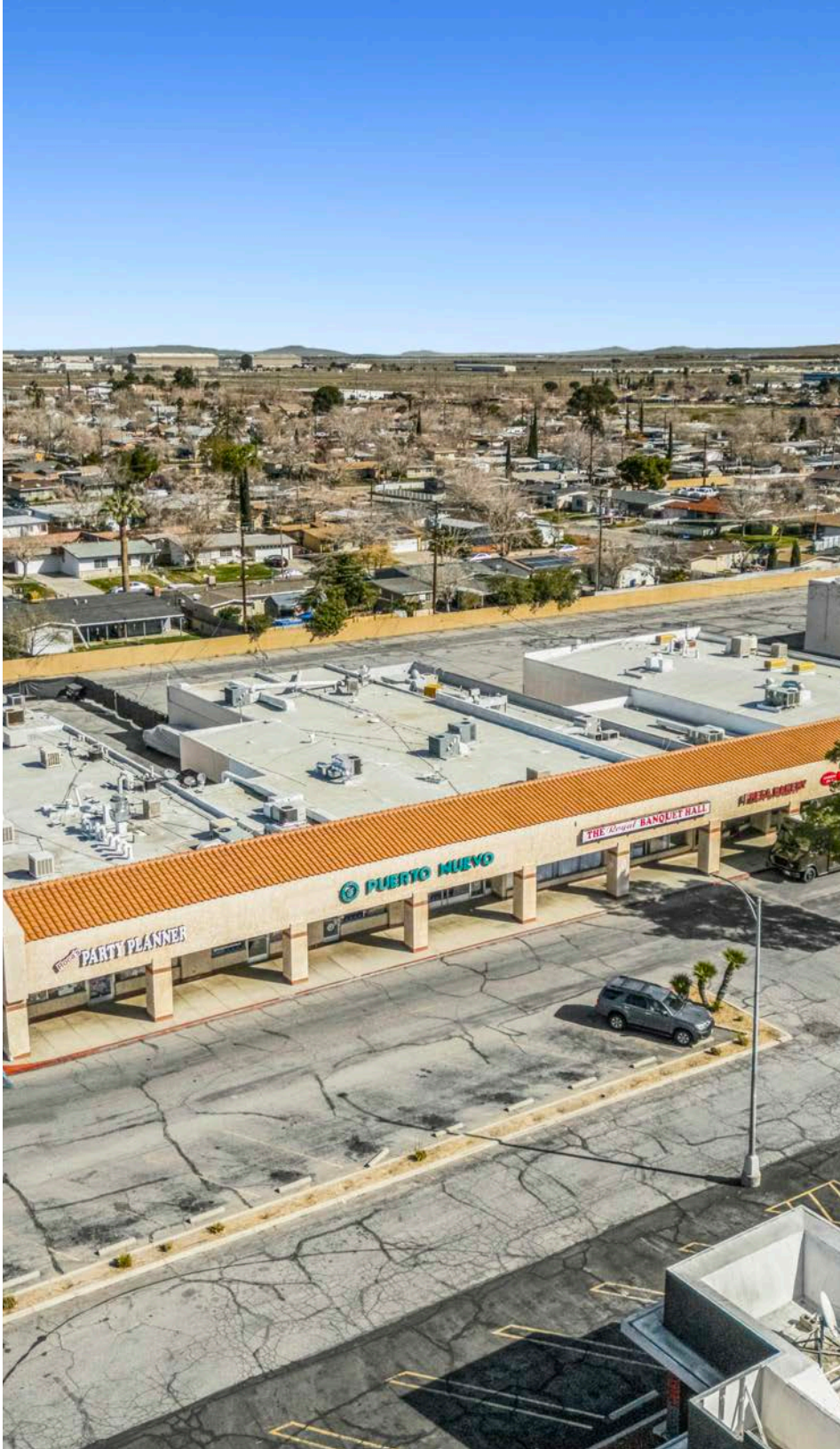
TERM: 3 to 5 years

DATE AVAILABLE: Available

*NNN charges are currently estimated at \$0.40

HIGHLIGHTS

- 1,878 SF of retail space available
- Excellent tenant mix
- Situated on heavily-trafficked East Palmdale Blvd.
- Close proximity to national tenants including Subway, Starbucks, Carl's Jr., El Pollo Loco and more!
- Ample parking for the entire center







**Available space
is designed to
accommodate a variety
of uses!**

Available units

Unit	SF	Asking Rent
2107-2109	3,200	\$1.00 Just Leased!
2123	1,600	\$1.00 Just Leased!
2125	1,600	\$1.00 Just Leased!
38446-3448	1,878	\$1.00

*NNN charges are currently estimated at \$0.40



**AVISON
YOUNG**

We look forward to
speaking with you!

David Maling
Principal
213.453.1770 Call or Text
david.maling@avisonyoung.com
License No. 01139115

Visit us online
avisonyoung.com

© 2024. Avison Young. Information contained herein was obtained from sources deemed reliable and, while thought to be correct, have not been verified. Avison Young does not guarantee the accuracy or completeness of the information presented, nor assumes any responsibility or liability for any errors or omissions therein.

