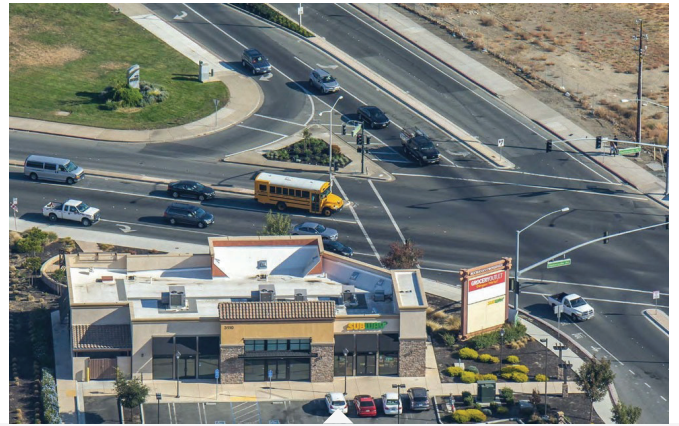


# BUCHANAN CROSSINGS

3110 Buchanan Road - Pad C, Antioch, CA 94509

|                     |                    |
|---------------------|--------------------|
| Building Name       | Buchanan Crossings |
| Property Type       | Retail             |
| Property Subtype    | Street Retail      |
| APN                 | 074-480-004        |
| Building Size       | 5,585 SF           |
| Lot Size            | 37,287 SF          |
| Year Built          | 2015               |
| Number of Floors    | 1                  |
| Parking Spaces      | 260                |
| Construction Status | Existing           |
| Free Standing       | Yes                |
| Number of Buildings | 1                  |



- 2015 Construction
- Corporate Subway lease
- Excellent visibility and signage
- Directly across from Somersville Town Center, a 500,000 sf regional mall Affluent
- demographics: \$88,000 AHI and 161,000 people within a 5 mile radius

MAY NOVAK

650.888.2201  
may@centersdynamic.com | CalDRE #01267812

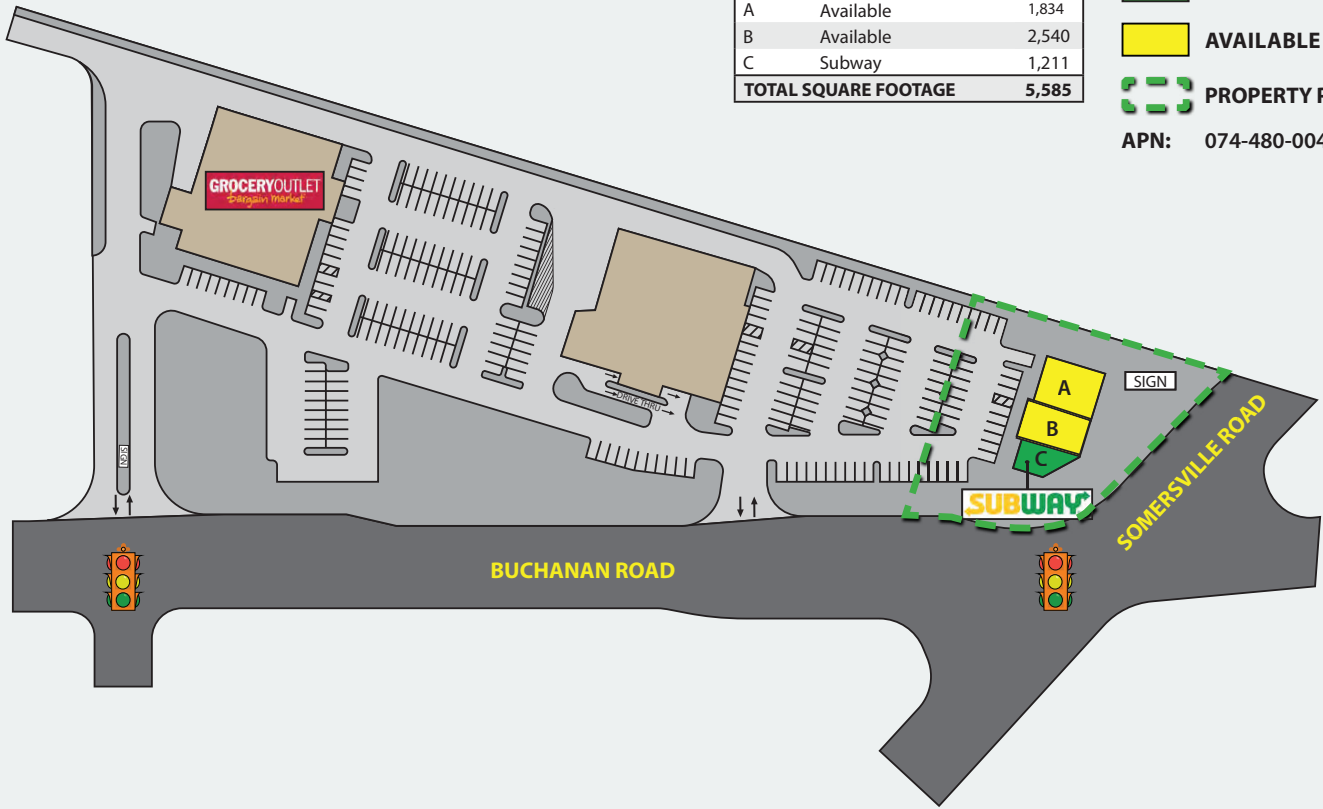
Centers Dynamic Partners, Inc. | 303 Twin Dolphin Drive, Suite 600, Redwood Shores, CA 94065 | 650.260.7660 | centersdynamicpartners.com

Any And All Information Pertaining To Location, Demographics And The Site Plan Is Supplied By Sources Believed To Be Reliable. We Do Not Guarantee The Accuracy Of Information And Make No Warranty Or Representation Thereeto. All Information Is Presented Here With The Possibility Of Errors, Omissions, Change Of Price, Rental Or Other Conditions, Prior Sale, Lease Or Financing, Or Being Withdrawn Without Notice. Centers Dynamic Partners, Inc. Operates Under The Corporate Department Of Real Estate License 02007525.



| SUITE                       | TENANTS   | SF           |
|-----------------------------|-----------|--------------|
| A                           | Available | 1,834        |
| B                           | Available | 2,540        |
| C                           | Subway    | 1,211        |
| <b>TOTAL SQUARE FOOTAGE</b> |           | <b>5,585</b> |

- SUBJECT PROPERTY**
  - AVAILABLE**
  - PROPERTY PARCEL**
- APN: 074-480-004-6



The information contained herein has been obtained from sources we deem reliable. We cannot assume responsibility for its accuracy.

**1HR**  
COMMUTE

TO OAKLAND AND  
SAN FRANCISCO ON BART

**DELTA BUSINESS PARK**

**SOMERSVILLE  
TOWNE CENTER**  
- 501,259 SF; 65 STORES -  
Smart & Final. ★ macy's  
20 FITNESS sears  
PALLAS

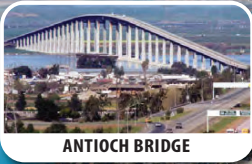
**SUBJECT PROPERTY**  
SUBWAY

**32,000 CPD**  
- INTERSECTION -

**BART**  
**Bay Area Rapid Transit**  
112-mile light rail system that connects  
to San Francisco and Oakland; 432,000  
ridership per weekday



The information contained herein has been obtained from sources we deem reliable. We cannot assume responsibility for its accuracy.



**ANTIOCH BRIDGE**

**ANTIOCH HIGH SCHOOL**  
- 1,947 STUDENTS -

**PARK MIDDLE SCHOOL**  
- 1,069 STUDENTS -

**SUTTER DELTA MEDICAL CENTER**  
- 145 Beds -

**TARGET Burlington**  
**HARBOR FREIGHT**  
**ROSS**  
**PET SMART**  
**JOANN**  
**DOLLAR TREE**

**Jeep**  
**RAM**  
**TOYOTA**  
**NISSAN**  
**LOWES**  
**Costco**  
**IN-Y-OUT**  
**CHASE**  
**Starbucks**  
**Bank of America**  
**WELLS FARGO**  
**99¢ ONLY**  
**BIG LOTS!**

**OUTBACK**  
**BOB BROS**  
**Camera**

**SOMERSVILLE TOWNE CENTER**  
- 501,259 SF; 65 STORES -  
**Smart & Final** ★ **macy's**  
**FITNESS** **sears**  
**FALLAS**

**GROCERY OUTLET**  
Patriot Market

**32,000 CPD**  
- INTERSECTION -

**BART** **ba** **BAY AREA RAPID TRANSIT**  
112-mile light rail system that connects to San Francisco and Oakland; 432,000 ridership per weekday



# BUCHANAN CROSSINGS

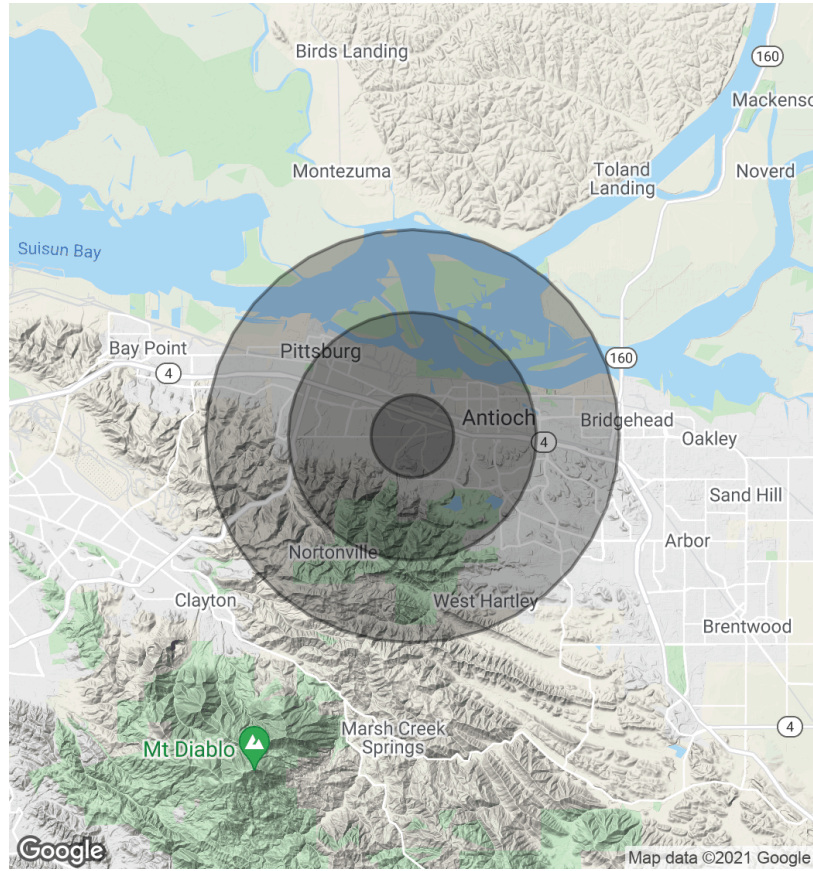
3110 Buchanan Road - Pad C, Antioch, CA 94509

| POPULATION           | 1 MILE | 3 MILES | 5 MILES |
|----------------------|--------|---------|---------|
| Total Population     | 14,411 | 68,393  | 143,149 |
| Average age          | 29.8   | 32.3    | 32.9    |
| Average age (Male)   | 29.4   | 31.7    | 31.9    |
| Average age (Female) | 30.4   | 33.0    | 33.5    |

| HOUSEHOLDS & INCOME | 1 MILE    | 3 MILES   | 5 MILES   |
|---------------------|-----------|-----------|-----------|
| Total households    | 5,057     | 23,197    | 45,737    |
| # of persons per HH | 2.8       | 2.9       | 3.1       |
| Average HH income   | \$55,931  | \$62,354  | \$69,838  |
| Average house value | \$300,601 | \$314,459 | \$394,825 |

\* Demographic data derived from 2010 US Census



MAY NOVAK

650.888.2201

may@centersdynamic.com | CalDRE #01267812

Centers Dynamic Partners, Inc. | 303 Twin Dolphin Drive, Suite 600, Redwood Shores, CA 94065 | 650.260.7660 | centersdynamicpartners.com

Any And All Information Pertaining To Location, Demographics And The Site Plan Is Supplied By Sources Believed To Be Reliable. We Do Not Guarantee The Accuracy Of Information And Make No Warranty Or Representation Thereeto. All Information Is Presented Here With The Possibility Of Errors, Omissions, Change Of Price, Rental Or Other Conditions, Prior Sale, Lease Or Financing, Or Being Withdrawn Without Notice. Centers Dynamic Partners, Inc. Operates Under The Corporate Department Of Real Estate License 02007525.



# BUCHANAN CROSSINGS

3110 Buchanan Road - Pad C, Antioch, CA 94509

**MAY NOVAK**

Vice President, Asset Management

**C:** 650.888.2201

[may@centersdynamic.com](mailto:may@centersdynamic.com)

CalBRE 01267812

**MAY NOVAK**

650.888.2201

[may@centersdynamic.com](mailto:may@centersdynamic.com) | CalDRE #01267812

Centers Dynamic Partners, Inc. | 303 Twin Dolphin Drive, Suite 600, Redwood Shores, CA 94065 | 650.260.7660 | [centersdynamicpartners.com](http://centersdynamicpartners.com), Calbre 02007525

Any And All Information Pertaining To Location, Demographics And The Site Plan Is Supplied By Sources Believed To Be Reliable. We Do Not Guarantee The Accuracy Of Information And Make No Warranty Or Representation Thereto. All Information Is Presented Here With The Possibility Of Errors, Omissions, Change Of Price, Rental Or Other Conditions, Prior Sale, Lease Or Financing, Or Being Withdrawn Without Notice. Centers Dynamic Partners, Inc. Operates Under The Corporate Department Of Real Estate License 02007525.

