



OFFICE SPACE FOR LEASE

22102 N. PEPPER RD LAKE BARRINGTON, IL



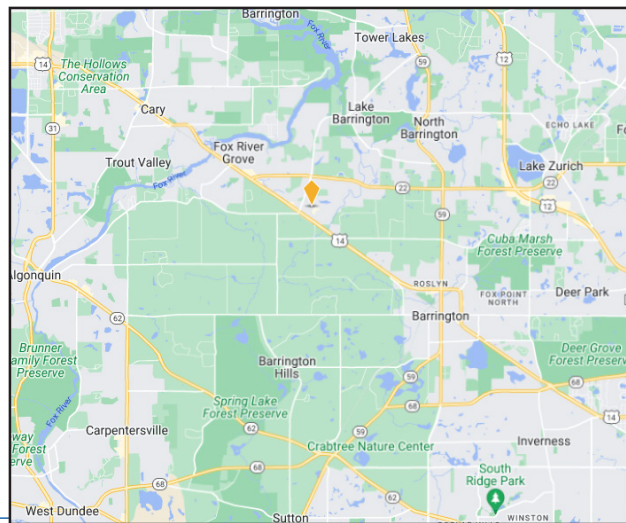
BUILDING FEATURES:

- 7,600 SF Office Space Available For Lease
- Tenant Controlled HVAC & 24 hour access
- High End Finishes Throughout
- Elevator ID on 2nd Floor
- Move in condition or LL can build out space to meet tenant needs
- Professional business park setting located in the prestigious Barrington community
- Close Proximity to Good Shepherd Hospital
- Close to restaurants, coffee shops and recreation
- CHARGING STATIONS: 3 EV Charging Stations Available
- Easy Access to Northwest Highway (Route 14)
- Click on link in Brochure for 3-D Virtual Tour!
- **Rental Rate: \$16.25 PSF MG**

AVAILABILITY:

SUITE	SIZE (SF)	Notes
Suite 200	7,600 SF	High End Office space for Lease

** Reception Area, Conf Rooms, open areas, private offices kitchen, upgraded fixtures & more!!!



FOR MORE INFORMATION:

RANDY OLCZYK
Direct: 847.246.9611
randy@chicagolandcommercial.com

RAY OKIGAWA
Direct: 847.246.9632
ray@chicagolandcommercial.com



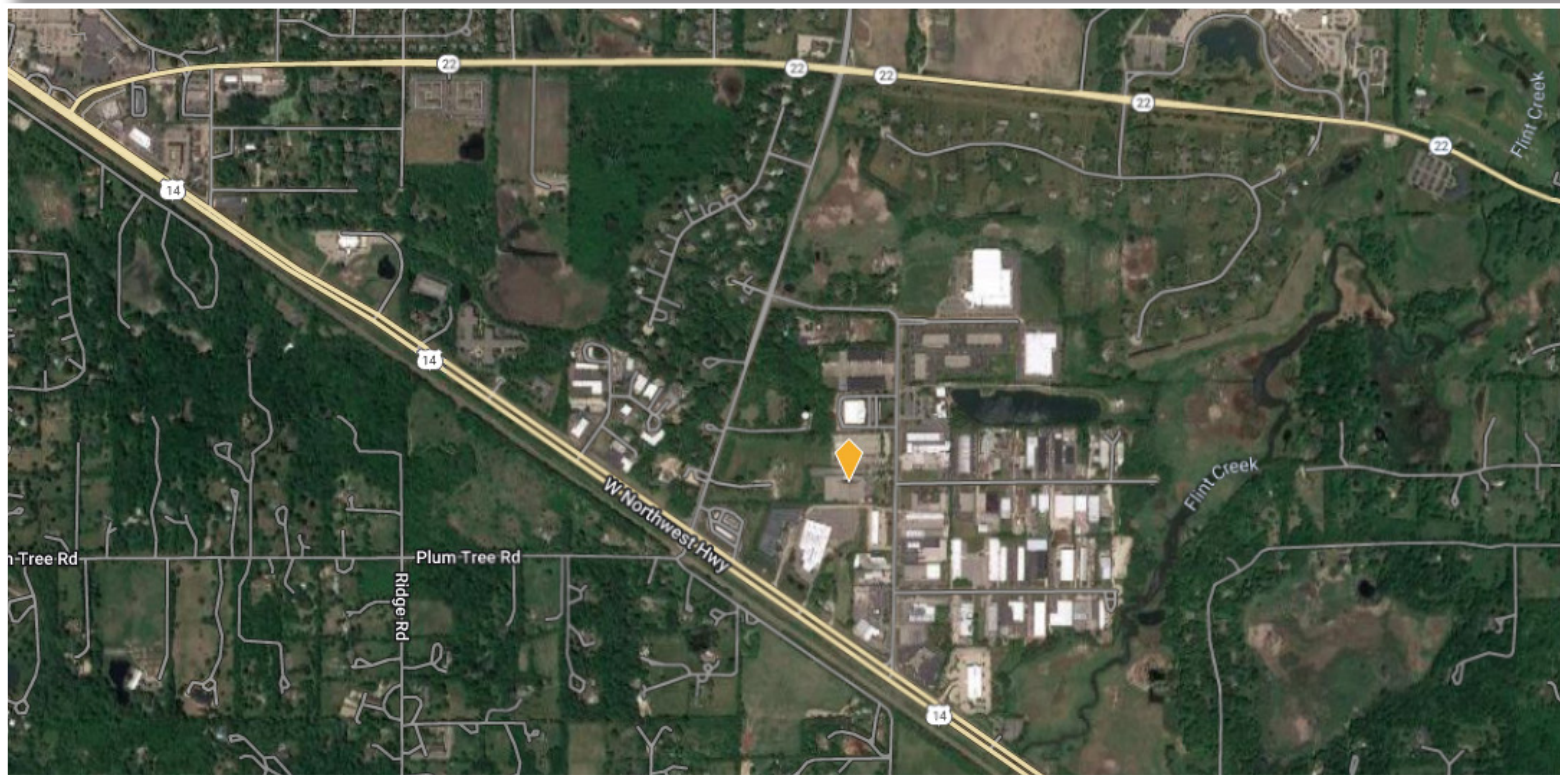
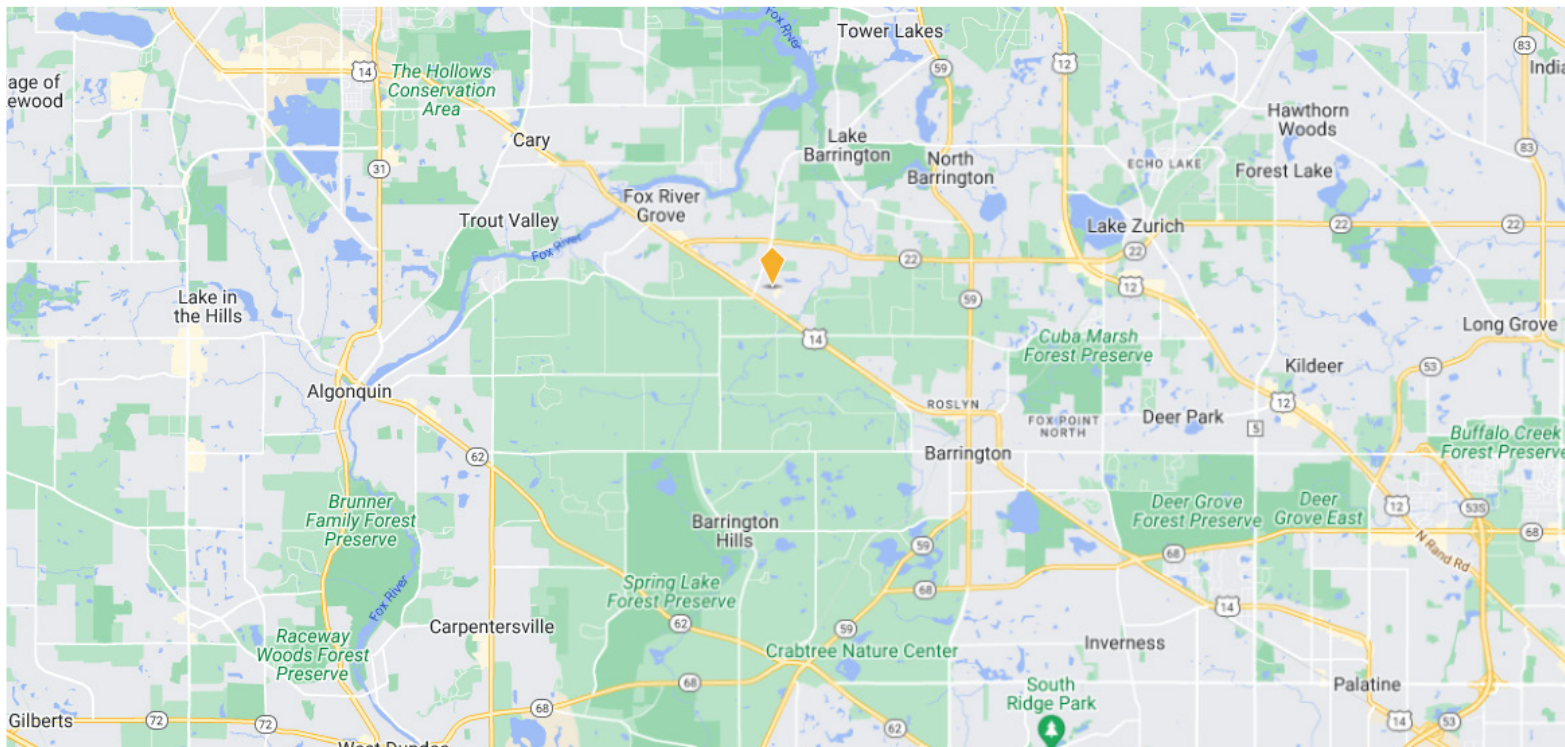
4811 Emerson Ave Suite 112 Palatine, IL 60067



OFFICE SPACE FOR LEASE

22102 N. PEPPER RD LAKE BARRINGTON, IL

AREA MAPS



FOR MORE INFORMATION:

RANDY OLCZYK
Direct: 847.246.9611
randy@chicagolandcommercial.com

RAY OKIGAWA
Direct: 847.246.9632
ray@chicagolandcommercial.com



Chicagoland
Commercial
REAL ESTATE

4811 Emerson Ave. Suite 112, Palatine, IL 60067



OFFICE SPACE FOR LEASE

22102 N. PEPPER RD LAKE BARRINGTON, IL

BUILDING PHOTOS:



FOR MORE INFORMATION:

RANDY OLCZYK
Direct: 847.246.9611
randy@chicagolandcommercial.com

RAY OKIGAWA
Direct: 847.246.9632
ray@chicagolandcommercial.com



4811 Emerson Ave Suite 112 Palatine, IL 60067

LEASING | SALES | TENANT ADVISORY | MANAGEMENT

www.chicagolandcommercial.com



OFFICE SPACE FOR LEASE

22102 N. PEPPER RD LAKE BARRINGTON, IL

BUILDING PHOTOS:



FOR MORE INFORMATION:

RANDY OLCZYK
Direct: 847.246.9611
randy@chicagolandcommercial.com

RAY OKIGAWA
Direct: 847.246.9632
ray@chicagolandcommercial.com



4811 Emerson Ave Suite 112 Palatine, IL 60067

LEASING | SALES | TENANT ADVISORY | MANAGEMENT

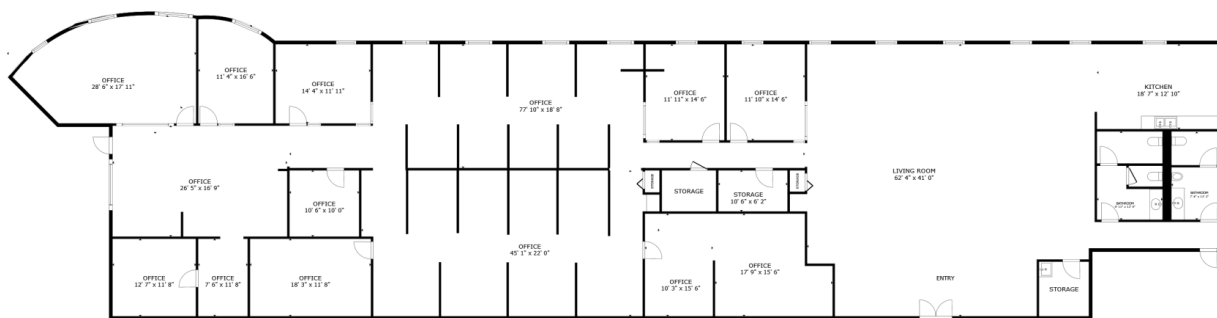
www.chicagolandcommercial.com



OFFICE SPACE FOR LEASE

22102 N. PEPPER RD LAKE BARRINGTON, IL

FLOORPLAN SUITE 200 (7,600 SF)



FLOOR PLAN

INTERACTIVE 3D TOUR AVAILABLE!



Scan the QR Code or click [here](#) for a 3-D Virtual Tour of the space!

FOR MORE INFORMATION:

RANDY OLCZYK
Direct: 847.246.9611
randy@chicagolandcommercial.com

RAY OKIGAWA
Direct: 847.246.9632
ray@chicagolandcommercial.com



4811 Emerson Ave Suite 112 Palatine, IL 60067