



Existing Conditions

# 1001 Avenue of the Americas

Northwest Corner of West 37th Street

Upper Level Full Floor | 10,399 rsf

Built Space with Great Light and Views

Walk to Times Square, Grand Central Terminal,  
Grand Central Madison, Herald Square and Bryant Park

 subways and NJ  train



ABS Partners Real Estate, as the exclusive agent is pleased to offer the following opportunity for lease:

Entire 20th Fl: 10,399 rsf



- Built space featuring 3-Sides of operable oversized windows providing abundant natural light and great views of Bryant Park, One Vanderbilt, and the Empire State Building
- (15) Windowed private workspaces, wet pantry/breakroom, private men's and women's restrooms plus (1) ADA restroom
- Landlord to provide additional modification if necessary

Possession: Immediate

Rent: Call or email for details

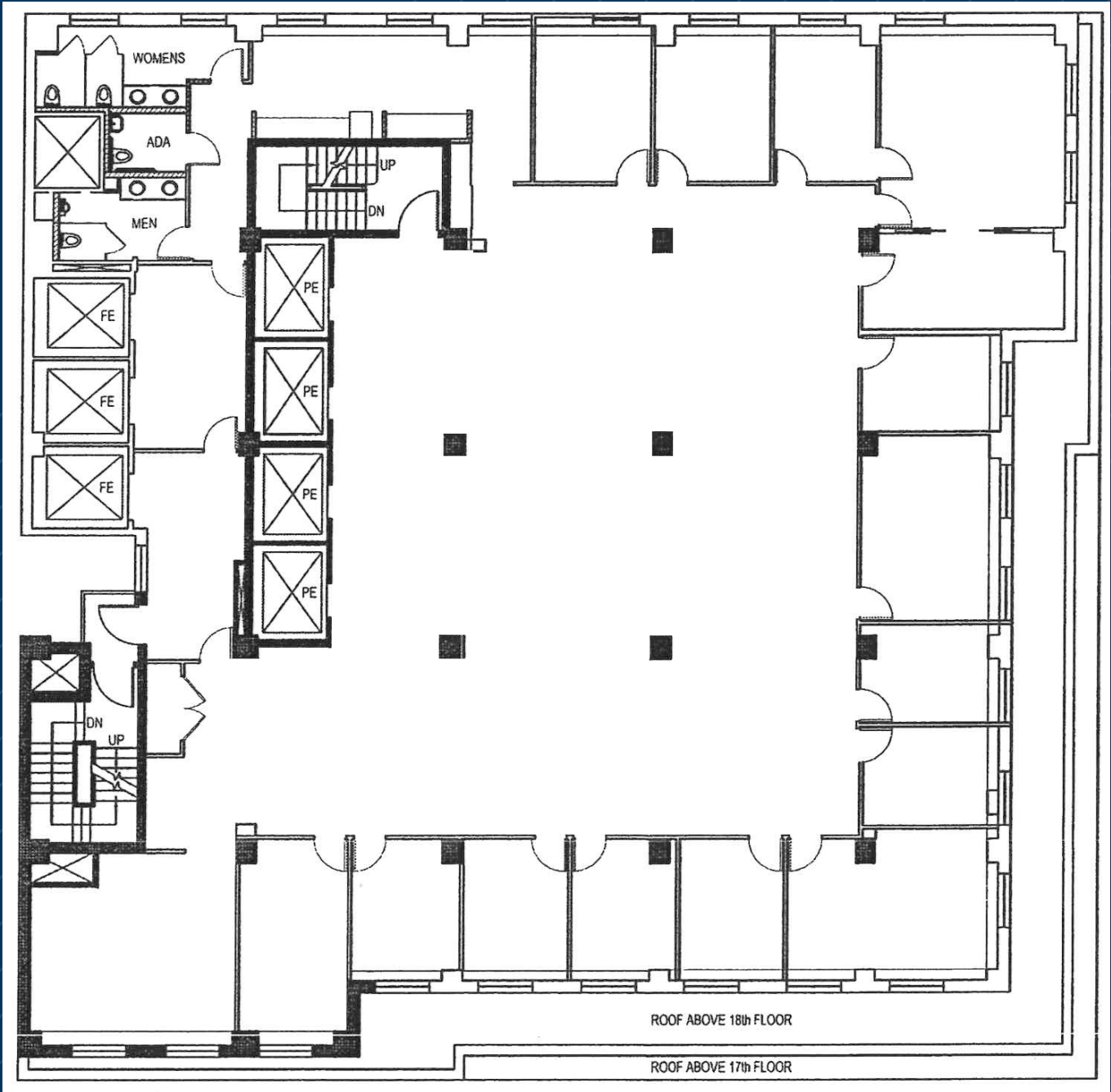


**Comments:**

- Reasonable rents, flexible terms, stable long-term ownership
- Corner building with multiple fiber providers, tenant-controlled A/C, and 24/7/365 access
- Walk to Times Square, Penn Station with seamless connection to the Moynihan Train Hall, Grand Central Terminal, Grand Central Madison LIRR concourse, and Bryant Park transportation hubs providing access to express and local subway lines and  
- Vicinity of Port Authority Bus Terminal
- Great central location convenient to Times Square and Herald Square services and variety of eateries

ENTIRE 20TH FLOOR - 10.399 RSF  
(AS-BUILT)

[CLICK TO VIEW VIRTUAL TOUR](#)



Avenue of the Americas

West 37th Street

Floor Plan not to scale, for display purposes only

ENTIRE 20TH FLOOR - 10.399 RSF  
(EXISTING CONDITIONS)



ENTIRE 20TH FLOOR - VIEWS



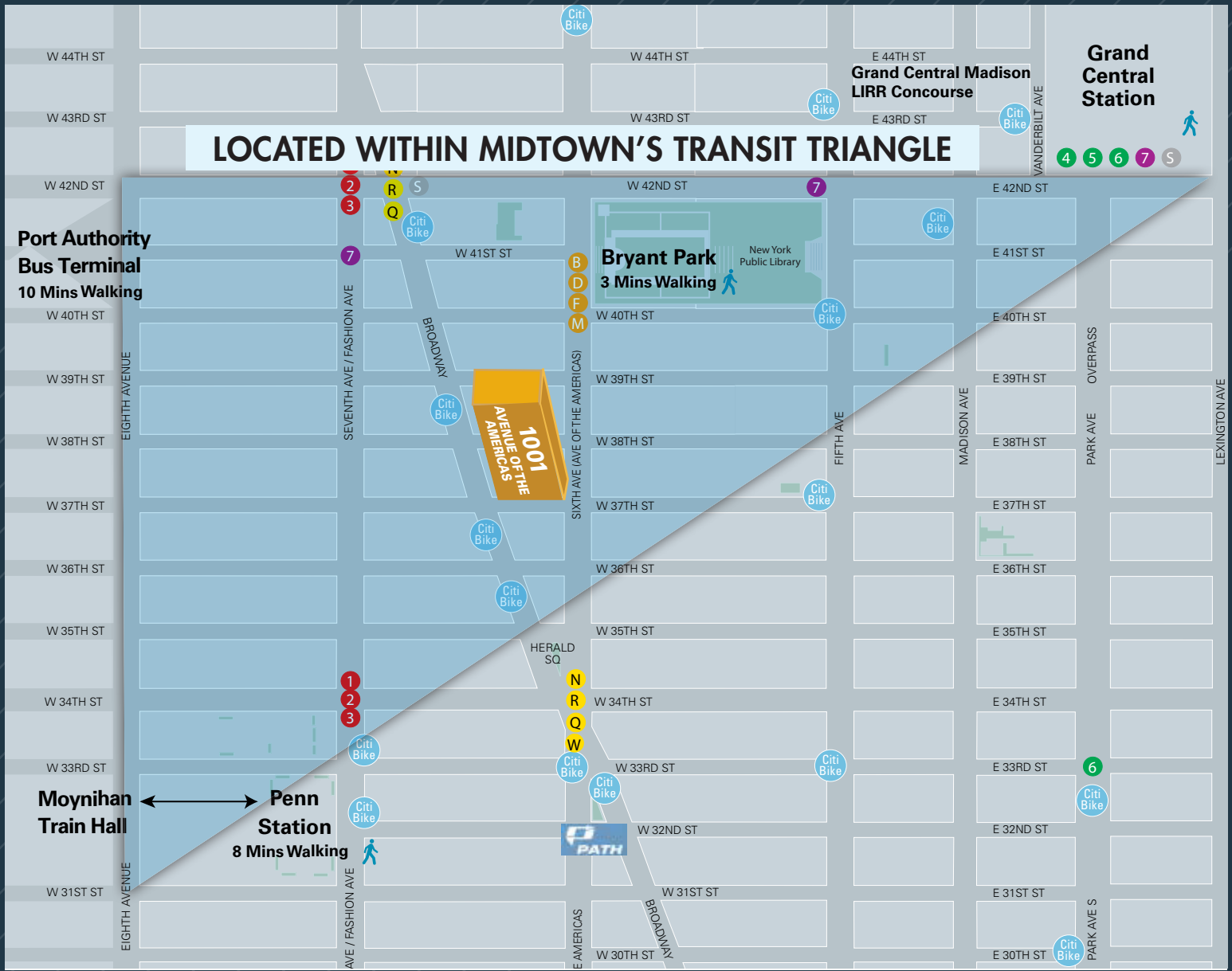
North View



Southeast View

ENTIRE 20TH FLOOR - 10.399 RSF  
(EXISTING CONDITIONS)





Walk to Grand Central Terminal



Blocks from Bryant Park



Moynihan Train Hall



Times Square

For further information and/or inspection, please contact:

**John Cinosky**

Partner, Licensed Assoc. Real Estate Broker  
212.400.2348 | jcinosky@absre.com

**William Carr**

Mging Director, Licensed Assoc. Real Estate Broker  
212.400.6078 | wcarr@absre.com



ABS Partners Real Estate • 200 Park Avenue South, 10th Floor, New York, NY 10003 • 212.400.6060 • www.absre.com

All information is from sources deemed reliable but is subject to errors or omissions of any magnitude, withdrawal from market, or changes in terms, all without notice. Brokers employment and payment only by written agreement.