

**LOS ALAMITOS PLAZA**

10900 LOS ALAMITOS BLVD, LOS ALAMITOS, CA 90720

**RETAIL / OFFICE SPACE**



**PROPERTY HIGHLIGHTS**

Available Space **±912 - ±3,432 RSF**

Asking Rate **\$2.75 / NNN / PSF (RETAIL)  
\$2.00 / MG / PSF (OFFICE)**

NNN Expenses **\$0.65 / PSF**

- Mixed-Use Property Consisting of Both Retail and Office Space
- Prominent Los Alamitos Location
- Well Maintained Retail/Office Center
- Plentiful Amenities Within Walking Distance
- Excellent Exposure and Signage Available on Los Alamitos Boulevard
- Easy Access to the 605/405/22 FWYs
- Los Alamitos Plaza is Located on One of the Busiest Intersections in all of Orange County

Copyright © Lee & Associates. All rights reserved. No part of this work may be reproduced or distributed without written permission of the copyright owner. The information contained in this report was gathered by Lee & Associates from sources believed to be reliable. Lee & Associates, however, makes no representation concerning the accuracy or completeness of such information and expressly disclaims any responsibility for any inaccuracy contained herein.

**Contact Us Today!**

**Josh Reilly** MBA

Principal | DRE LIC 01474368

[jreilly@leelalb.com](mailto:jreilly@leelalb.com)

562.505.4848

**Kurt Hertzog**

Associate | DRE LIC 02011145

[khertzog@leelalb.com](mailto:khertzog@leelalb.com)

562.354.2524

Lee & Associates Los Angeles - Long Beach Inc.  
DRE License 01069854  
5000 E Spring St, Suite 600, Long Beach, CA 90815

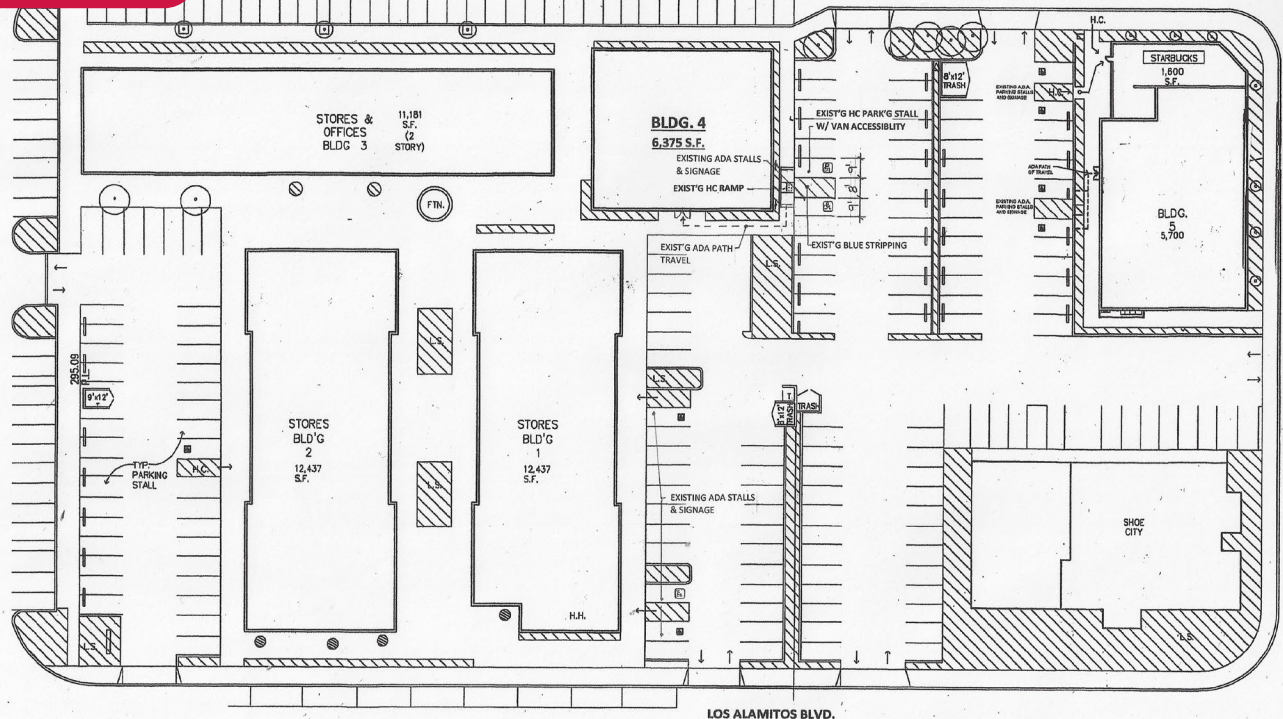
**LOS ALAMITOS PLAZA**

10900 LOS ALAMITOS BLVD, LOS ALAMITOS, CA 90720

**RETAIL / OFFICE SPACE**

UNIT	TYPE	SIZE	DESCRIPTION
208	Office	±912 RSF	<ul style="list-style-type: none"> <li>Reception Area</li> <li>Two (2) Private Offices</li> <li>Storage Area</li> </ul>
102	Medical	±3,432 RSF	<ul style="list-style-type: none"> <li>Former Medical Space; Multiple Private Exam Rooms</li> <li>Large Reception Area</li> <li>Frontage available along Los Alamitos Boulevard</li> <li>Courtyard Access</li> </ul>
120	Retail	±2,800 RSF	<ul style="list-style-type: none"> <li>Shell Space</li> <li>Courtyard Access</li> </ul>

**SITE PLAN**



This plan and its measurements are approximate and not up to scale. It is the responsibility of the buyer/lessor to verify the property's measurements independently.

**Josh Reilly** MBA  
Principal | DRE LIC 01474368  
jreilly@leelalb.com  
949.525.2720

**Kurt Hertzog**  
Associate | DRE LIC 02011145  
khertzog@leelalb.com  
562.354.2524

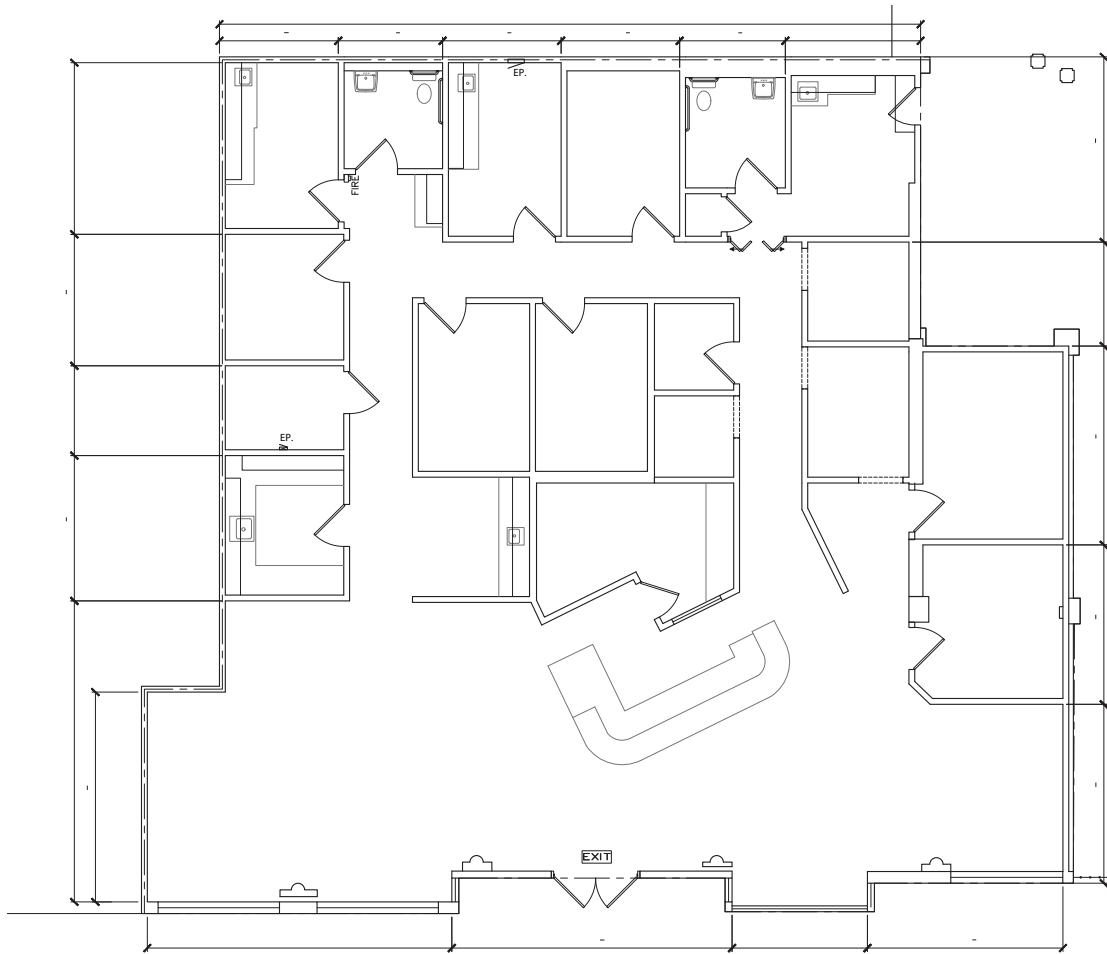
Lee & Associates Los Angeles - Long Beach Inc.  
DRE License 01069854  
5000 E Spring St, Suite 600, Long Beach, CA 90815

**LOS ALAMITOS PLAZA**

10900 LOS ALAMITOS BLVD, LOS ALAMITOS, CA 90720

**RETAIL / OFFICE  
SPACE**

**FLOOR PLAN - UNIT 102**



**This plan and its measurements are approximate and not up to scale. It is the responsibility of the buyer/lessor to verify the property's measurements independently.**

**Josh Reilly** <sup>MBA</sup>  
Principal | DRE LIC 01474368  
jreilly@leelalb.com  
949.525.2720

**Kurt Hertzog**  
Associate | DRE LIC 02011145  
khertzog@leelalb.com  
562.354.2524

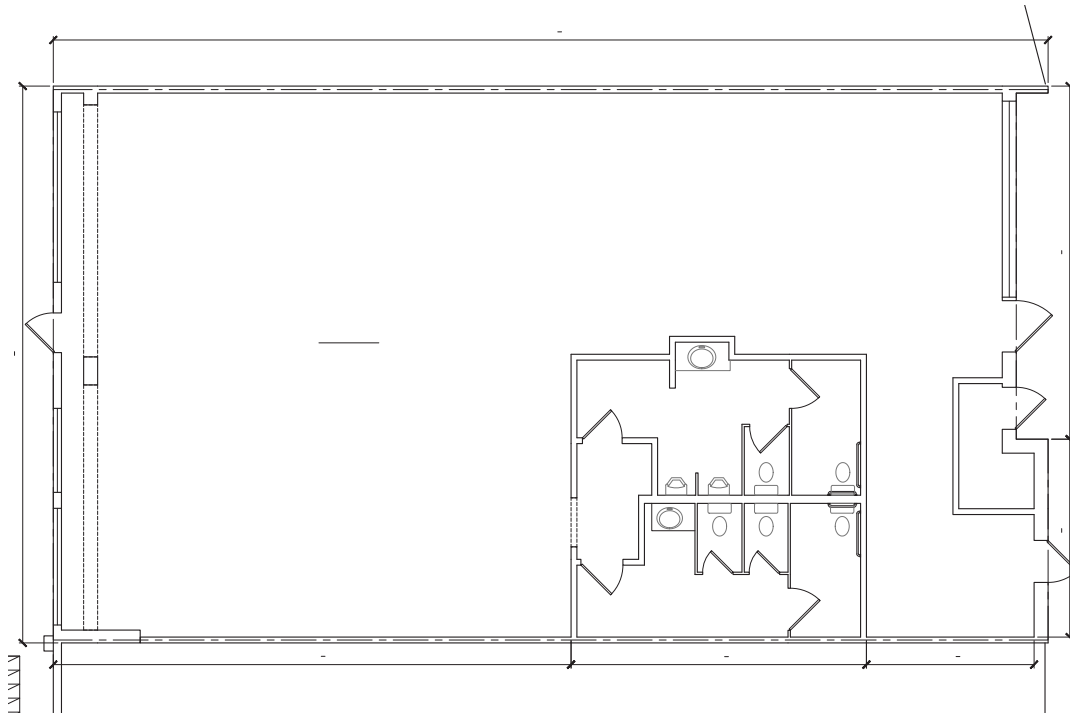
Lee & Associates Los Angeles - Long Beach Inc.  
DRE License 01069854  
5000 E Spring St, Suite 600, Long Beach, CA 90815

**LOS ALAMITOS PLAZA**

10900 LOS ALAMITOS BLVD, LOS ALAMITOS, CA 90720

**RETAIL / OFFICE  
SPACE**

**FLOOR PLAN - UNIT 120**



**This plan and its measurements are approximate and not up to scale. It is the responsibility of the buyer/lessor to verify the property's measurements independently.**

**Josh Reilly** <sup>MBA</sup>  
Principal | DRE LIC 01474368  
jreilly@leelalb.com  
949.525.2720

**Kurt Hertzog**  
Associate | DRE LIC 02011145  
khertzog@leelalb.com  
562.354.2524

Lee & Associates Los Angeles - Long Beach Inc.  
DRE License 01069854  
5000 E Spring St, Suite 600, Long Beach, CA 90815

**LOS ALAMITOS PLAZA**

10900 LOS ALAMITOS BLVD, LOS ALAMITOS, CA 90720

**RETAIL / OFFICE SPACE**



**Josh Reilly** <sup>MBA</sup>  
Principal | DRE LIC 01474368  
jreilly@leelalb.com  
949.525.2720

**Kurt Hertzog**  
Associate | DRE LIC 02011145  
khertzog@leelalb.com  
562.354.2524

Lee & Associates Los Angeles - Long Beach Inc.  
DRE License 01069854  
5000 E Spring St, Suite 600, Long Beach, CA 90815

**LOS ALAMITOS PLAZA**

10900 LOS ALAMITOS BLVD, LOS ALAMITOS, CA 90720

**RETAIL / OFFICE SPACE**



**Josh Reilly** MBA  
Principal | DRE LIC 01474368  
jreilly@leelalb.com  
949.525.2720

**Kurt Hertzog**  
Associate | DRE LIC 02011145  
khertzog@leelalb.com  
562.354.2524

Lee & Associates Los Angeles - Long Beach Inc.  
DRE License 01069854  
5000 E Spring St, Suite 600, Long Beach, CA 90815