

Specifications

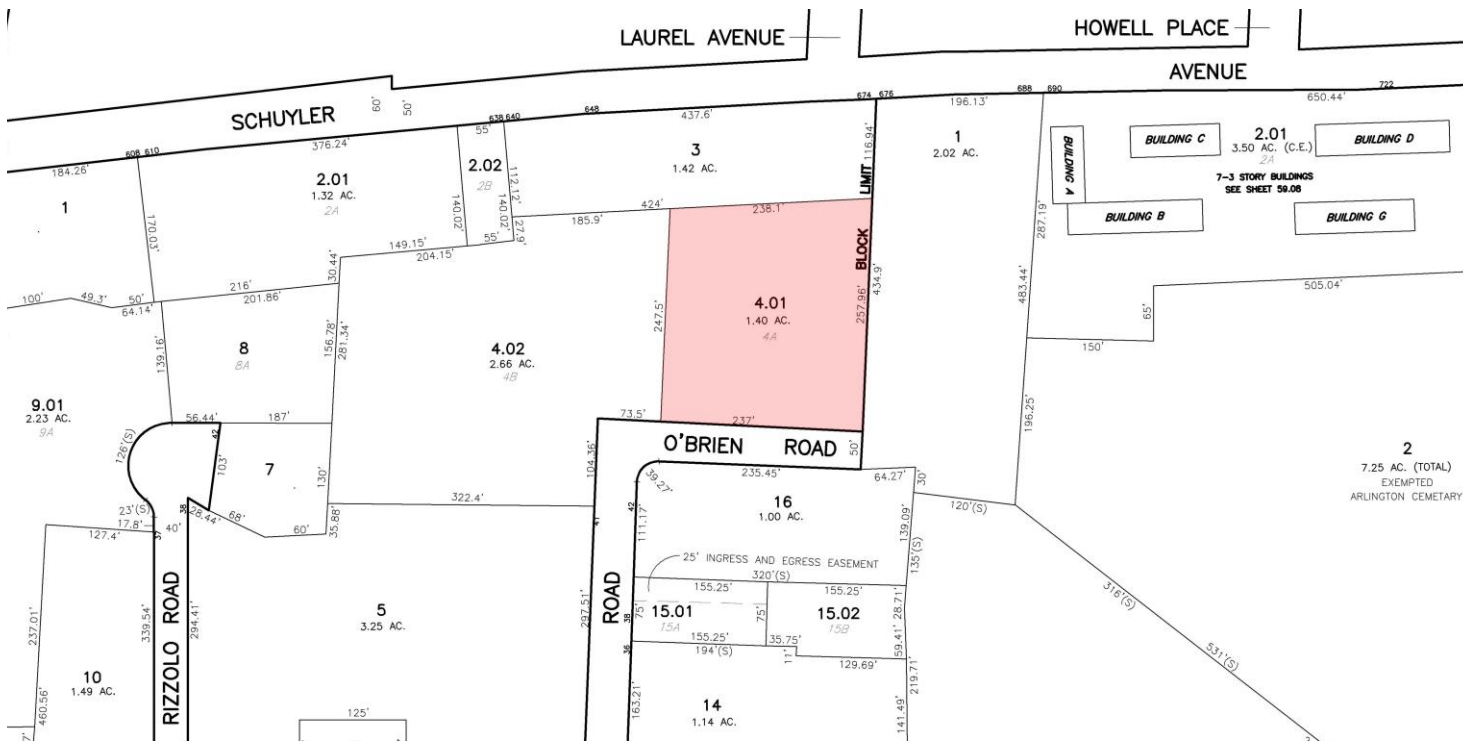
- ±16,392 SF BUILDING SIZE
- ±2,000 SF OFFICE
- ±1.4 AC (Block 150, Lot 4.01) LOT SIZE
- 600 Amps POWER
- 3 (3) 15' x 18' Oversized Grade-Level Doors LOADING
- 20' Clear CEILING HEIGHT
- \$41,981.76 TAXES (2025)
- M (Manufacturing) ZONING
- 2.1 Miles to I-280
- 3.3 Miles to I-95 Exit 15
- 11.9 Miles to Elizabeth Port Area ACCESSIBILITY

For additional property information or to arrange an inspection, please contact the exclusive brokers:

Jason M. Crimmins, CCIM, SIOR
Chief Executive Officer
 973.379.6644 x 122
 jmcrimmins@blauberg.com

Alessandro (Alex) Conte, CCIM, SIOR
President
 973.379.6644 x 131
 acont@blauberg.com

Peter J. Murano, Jr., SIOR
Managing Executive Director
 973.379.6644 x 114
 pjmurano@blauberg.com

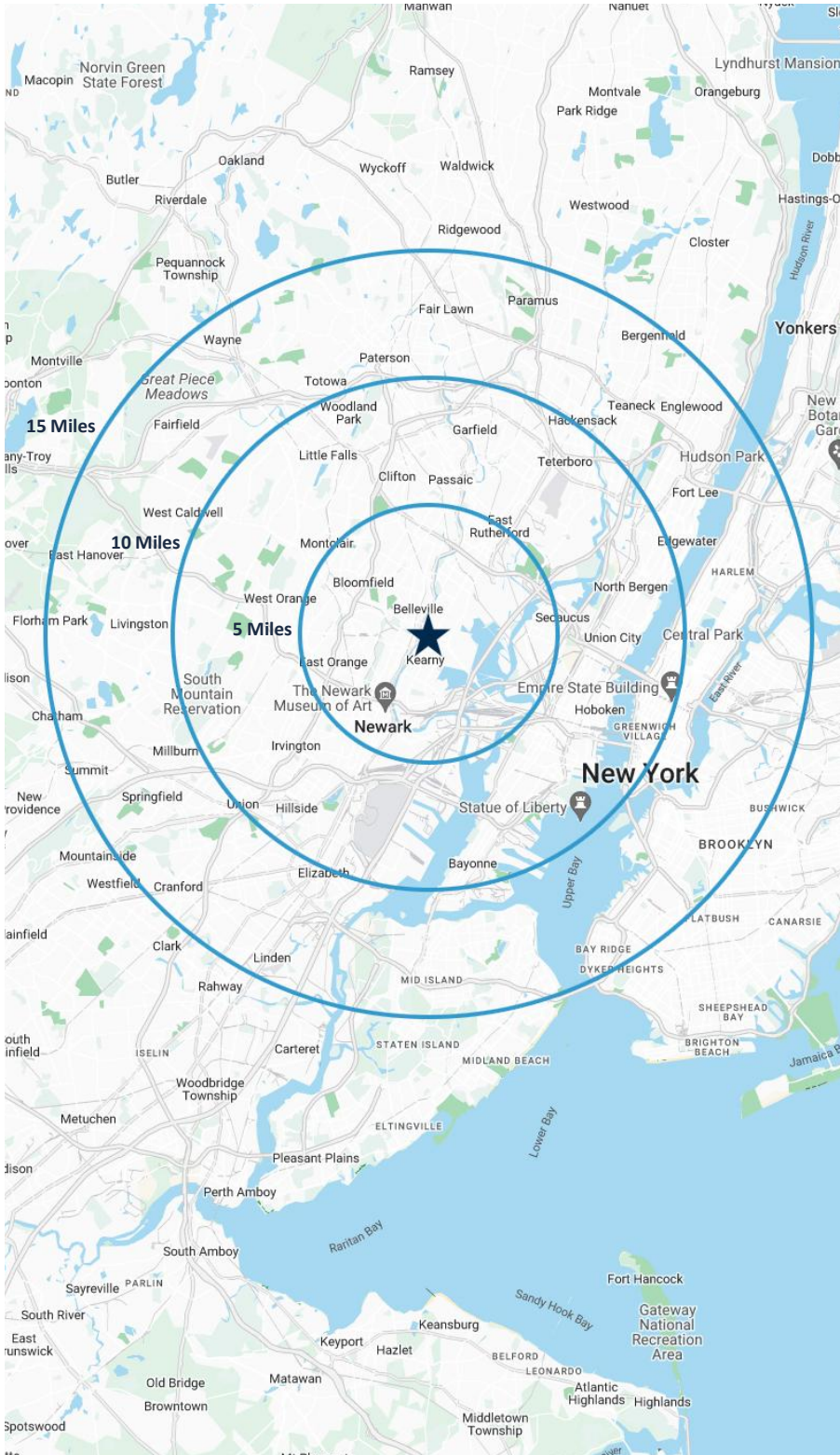


For additional property information or to arrange an inspection, please contact the exclusive brokers:

Jason M. Crimmins, CCIM, SIOR
 Chief Executive Officer
 973.379.6644 x 122
 jmcrimmins@blauberg.com

Alessandro (Alex) Conte, CCIM, SIOR
 President
 973.379.6644 x 131
 acont@blauberg.com

Peter J. Murano, Jr., SIOR
 Managing Executive Director
 973.379.6644 x 114
 pjmurano@blauberg.com



5 MILES

- Total Population: 798,006
- Households: 303,971
- Median Household Income: \$84,980
- Average Household Size: 2.6
- Transportation to Work: 400,955
- Labor Force: 645,426

10 MILES

- Total Population: 4.06M
- Households: 1.73M
- Median Household Income: \$122,721
- Average Household Size: 2.3
- Transportation to Work: 2.23M
- Labor Force: 3.39M

15 MILES

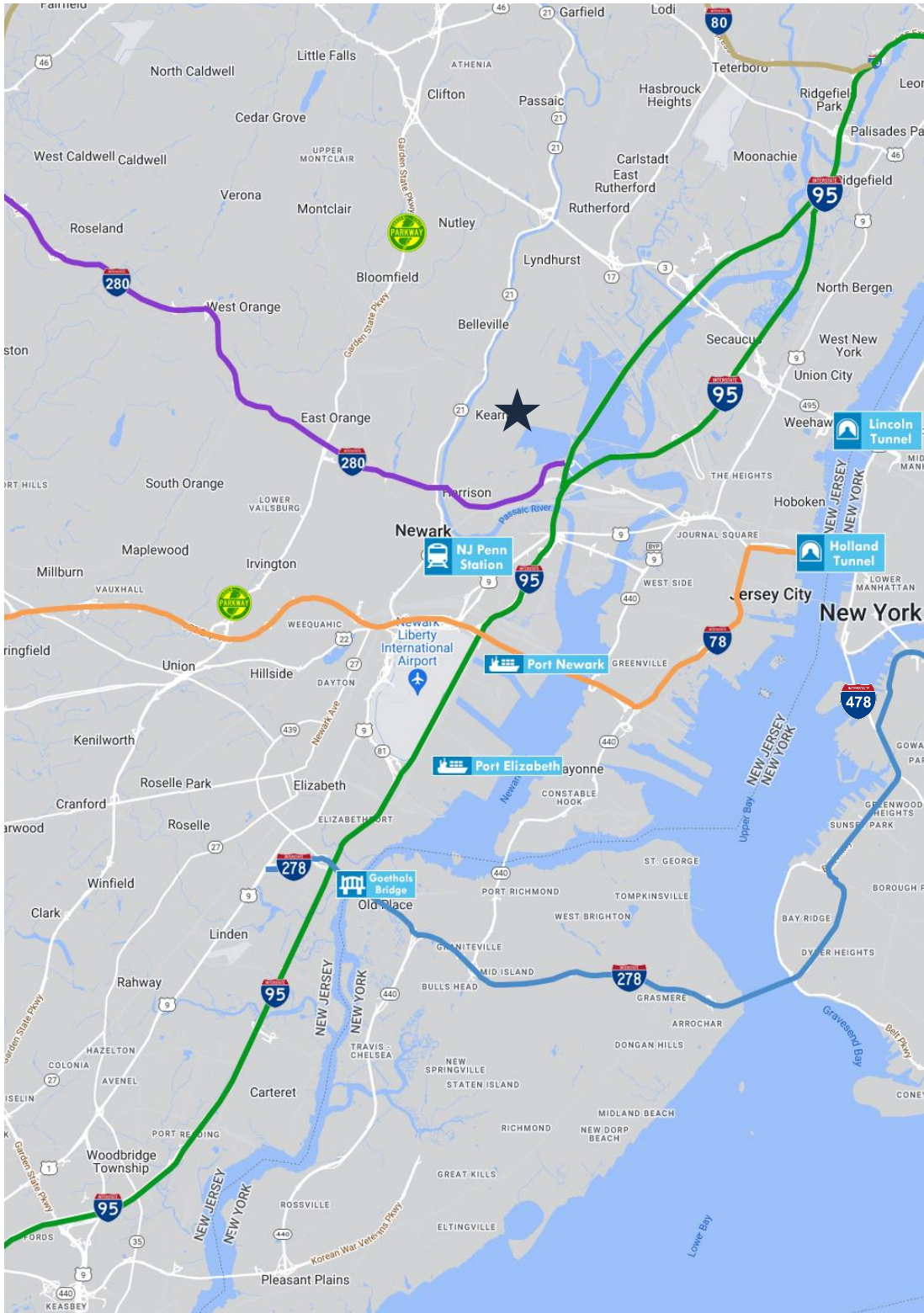
- Total Population: 9.52M
- Households: 3.76M
- Median Household Income: \$105,211
- Average Household Size: 2.5
- Transportation to Work: 4.97M
- Labor Force: 7.82M

For additional property information or to arrange an inspection, please contact the exclusive brokers:

Jason M. Crimmins, CCIM, SIOR
 Chief Executive Officer
 973.379.6644 x 122
 jmcrimmins@blauberg.com

Alessandro (Alex) Conte, CCIM, SIOR
 President
 973.379.6644 x 131
 acont@blauberg.com

Peter J. Murano, Jr., SIOR
 Managing Executive Director
 973.379.6644 x 114
 pjmurano@blauberg.com



ACCESSIBILITY

-  2.1 MI
I-280
-  3.3 MI
I-95 Exit 15
-  3.9 MI
Newark Penn Station
-  5.0 MI
US Hwy 1 & 9
-  5.7 MI
GSP Exit 145
-  6.9 MI
I-78
-  7.6 MI
Holland Tunnel
-  9.5 MI
Lincoln Tunnel
-  10.4 MI
Newark Airport
-  11.9 MI
Ports Newark & Elizabeth

For additional property information or to arrange an inspection, please contact the exclusive brokers:

Jason M. Crimmins, CCIM, SIOR
 Chief Executive Officer
 973.379.6644 x 122
 jmcrimmins@blauberg.com

Alessandro (Alex) Conte, CCIM, SIOR
 President
 973.379.6644 x 131
 acont@blauberg.com

Peter J. Murano, Jr., SIOR
 Managing Executive Director
 973.379.6644 x 114
 pjmurano@blauberg.com

The information contained herein has been obtained from sources considered to be reliable, but no guarantee of its accuracy is made by this company. In addition, no representation is made respecting zoning, condition of title, dimensions, or any matters of a legal or environmental nature. Such matters should be referred to legal counsel for determination. Terms and conditions are subject to change without prior notice. Subject to errors and omissions.