



# THE GALLERY ROW BUILDING, WASHINGTON DC

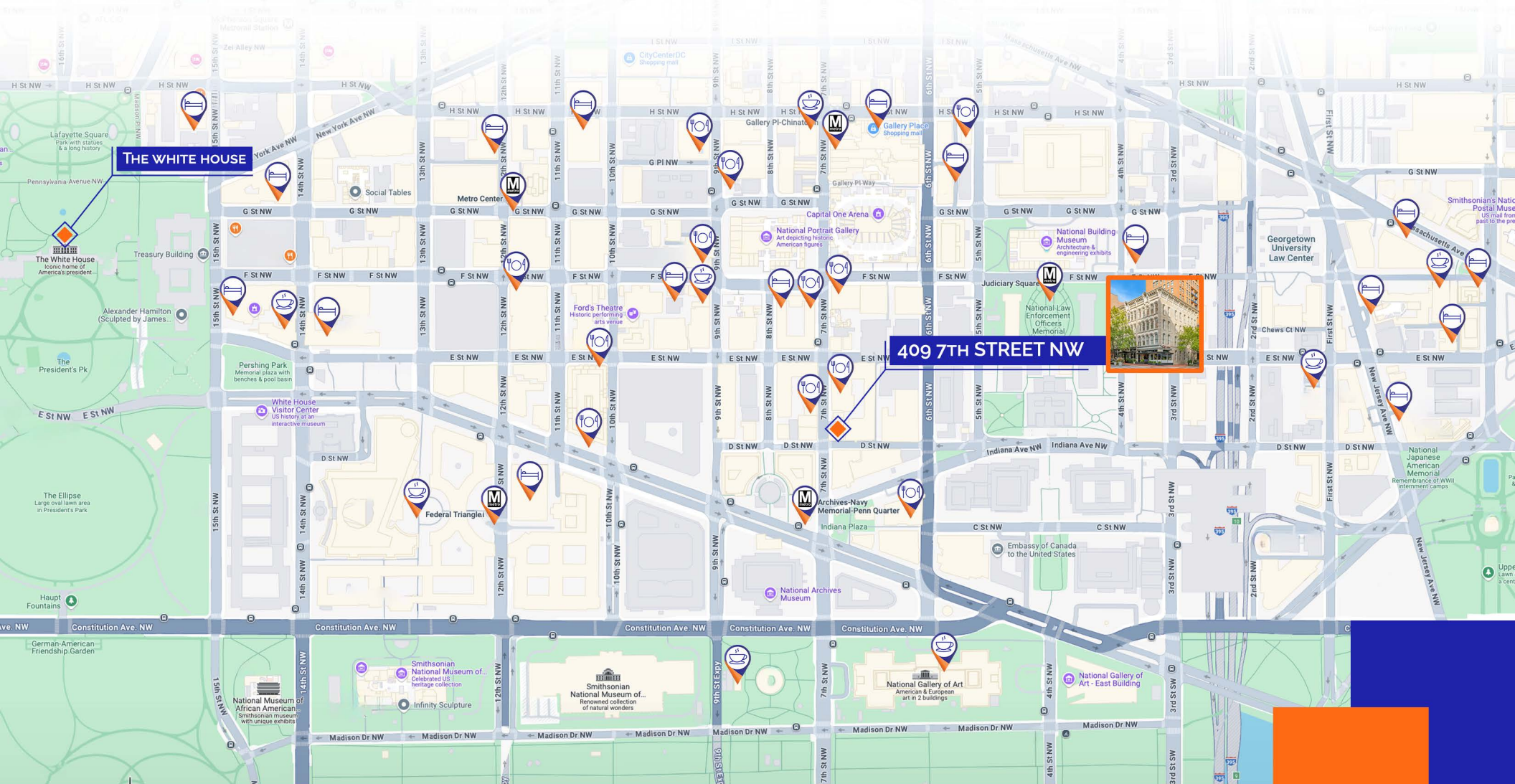
OFFICE SPACE FOR LEASE IN THE HEART OF DOWNTOWN DC'S PENN QUARTER

# ABOUT THE BUILDING

SITUATED STEPS FROM THE NATIONAL PORTRAIT GALLERY, CAPITAL ONE ARENA, AND GALLERY PLACE METRO, THIS **PREMIER OFFICE SPACE** OFFERS UNPARALLELED CONVENIENCE AND ACCESSIBILITY. TENANTS ENJOY **PROXIMITY** TO AN ARRAY OF DINING, SHOPPING, AND CULTURAL ATTRACTIONS. THE BUILDING FEATURES **FLEXIBLE** OFFICE LAYOUTS, A **PRESTIGIOUS ADDRESS**, AND **EXCELLENT CONNECTIVITY**. IDEAL FOR BUSINESSES SEEKING A **DYNAMIC LOCATION** IN ONE OF DC'S MOST VIBRANT NEIGHBORHOODS. **FLEXIBLE LEASING** OPTIONS ARE AVAILABLE TO SUIT VARIOUS BUSINESS NEEDS.



# PRIME LOCATION



**EXCELLENT LOCATION**  
WITH ACCESS TO  
DINING AND CULTURAL  
ATTRACTIONS.

**ONE BLOCK AWAY**  
FROM THE GALLERY  
PLACE-CHINATOWN  
METRO STATION.

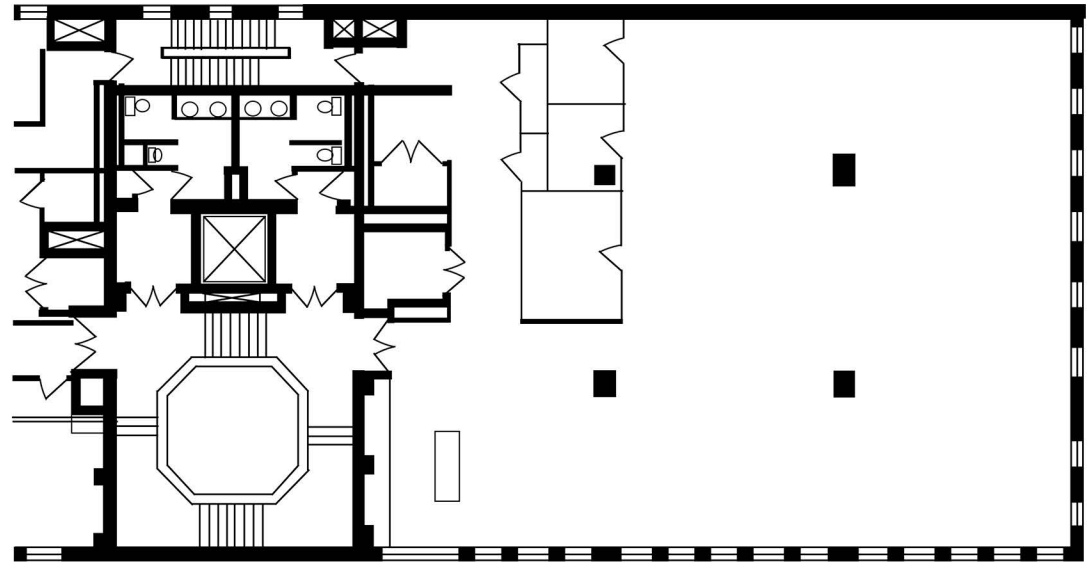
**IN THE HEART OF**  
DOWNTOWN DC'S  
PENN QUARTER.

**CONVENIENT**  
ACCESS TO NEARBY  
PARKING GARAGES.

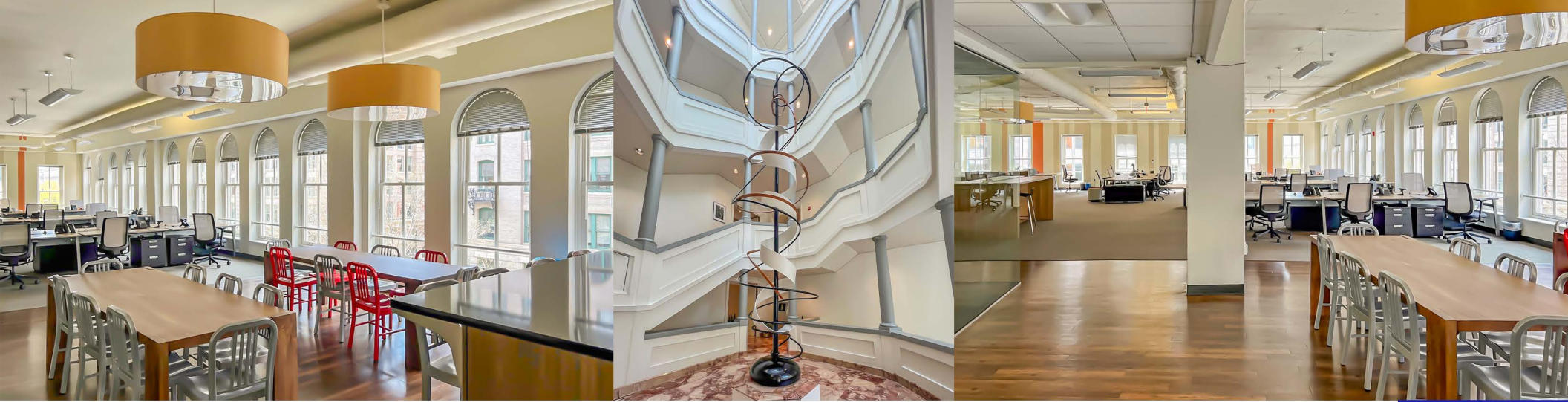
**IDEAL WALKABLE**  
**WORK**  
**ENVIRONMENT.**



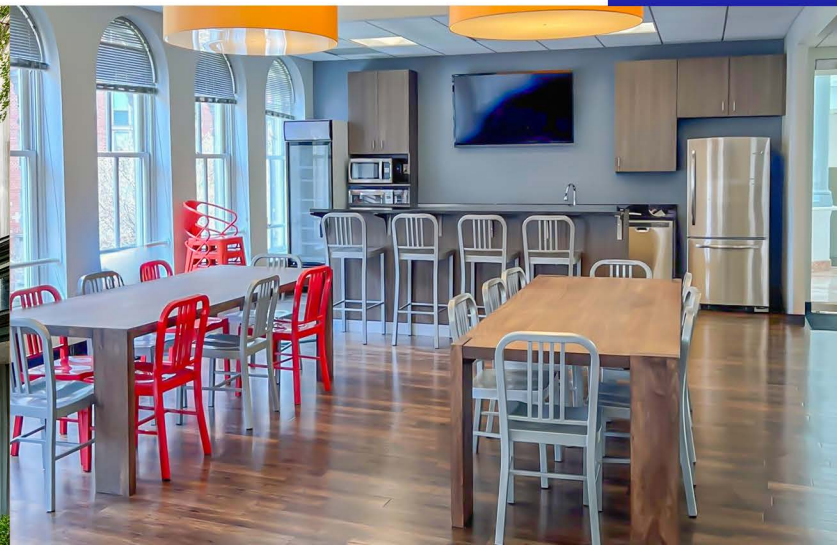
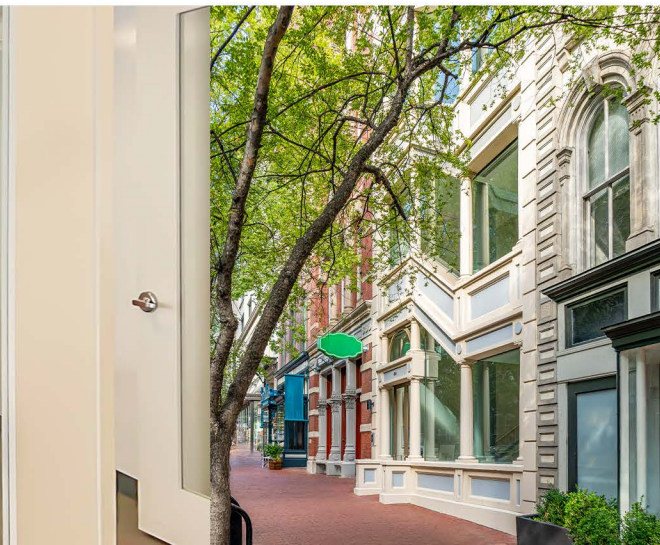
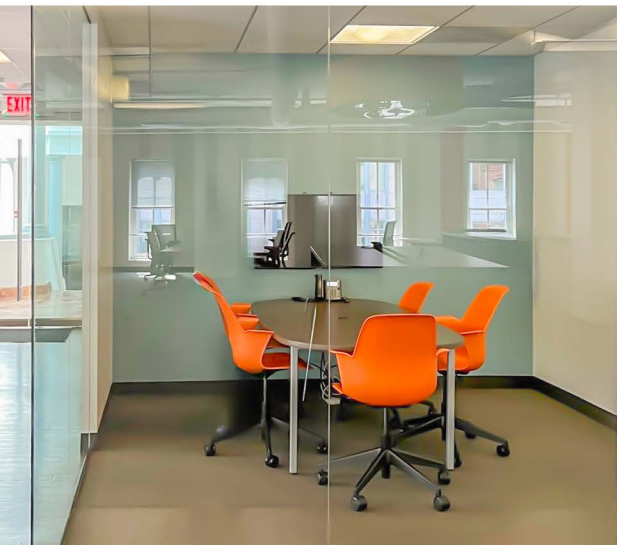
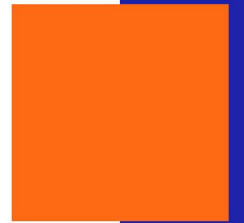
# 4<sup>TH</sup> FLOOR SUITE | 450



TOTAL | 4,720 SF



MAKE THIS SPACE  
YOUR SPACE



# GET IN TOUCH



**JIM STOKES**  
202.785.5801  
JIM@STOLADI.COM



**MICHAEL WINGARD**  
202.319.0198  
MICHAEL.WINGARD@STOLADI.COM



**STOLADI**

GIVING PROPERTIES THE  
ATTENTION THEY DESERVE

[STOLADI.COM](http://STOLADI.COM)