

Workplace Co.

3-5 LITTLE SOMERSET STREET

ALDGATE, LONDON, E1 8AH

THEWORKPLACECOMPANY.CO.UK | 020 7993 8075



3-5 LITTLE SOMERSET STREET

Secure a smart, professional workspace in a discreet yet highly connected location. Unit A at 5 Little Somerset Street offers a versatile commercial space ideal for office, consulting, studio, or boutique business use.

The unit features a practical, efficient layout with excellent natural light, creating a comfortable and productive working environment. With a low-maintenance fit-out and move-in ready condition, this space allows tenants to establish operations quickly and with minimal overhead.


New lease from the Landlord for a term to be agreed.

Floor	SQFT	Rent	Rates	Service	£ Monthly	£ Annually
1st	485	£42.50	£12.02	£4.30	£2,377	£28,528

Key Features

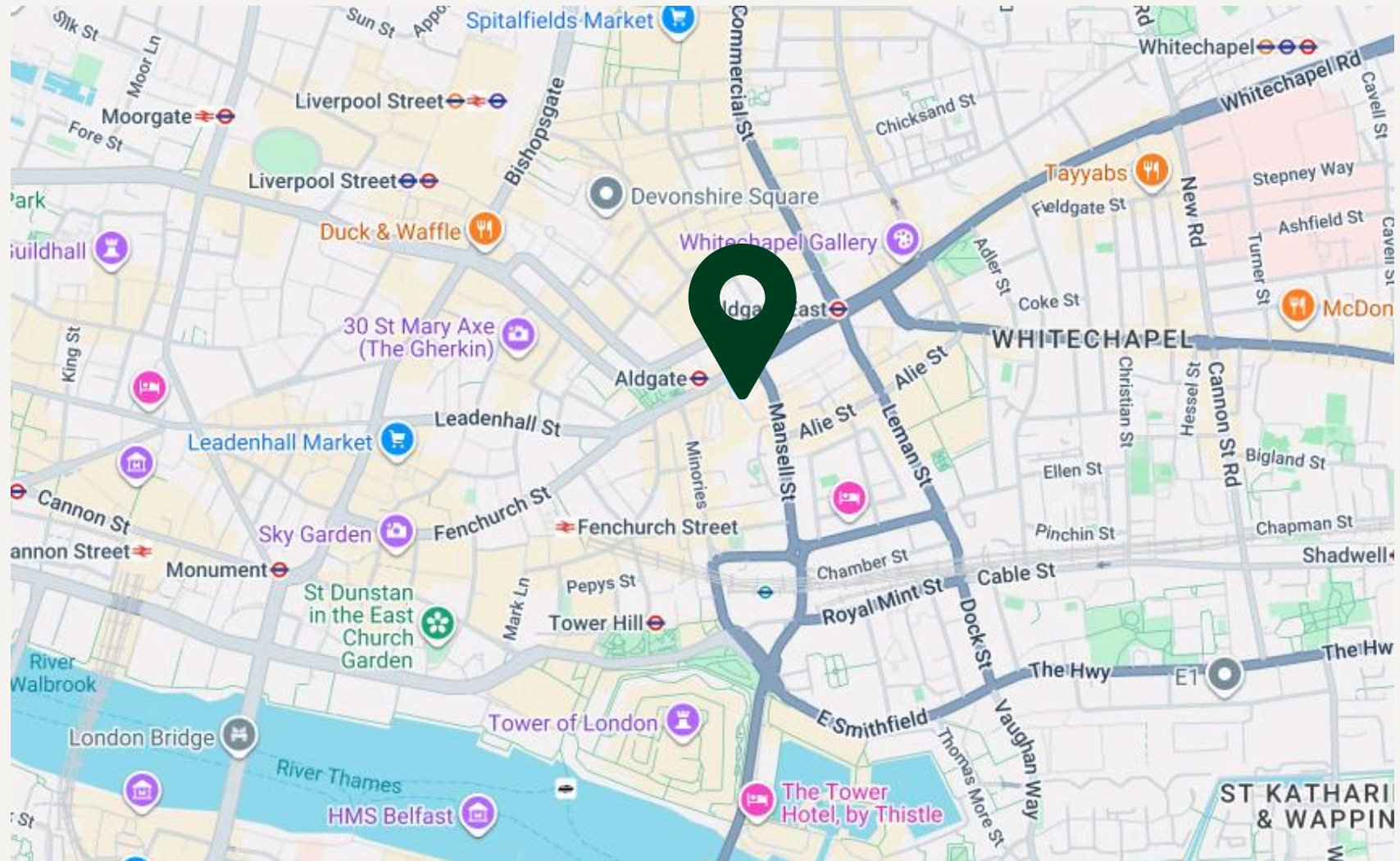
- Excellent transport links
- 24 hour access
- Demised WC
- Shower
- Demised kitchenette
- Excellent natural light
- Quiet side street
- Passenger lift
- CCTV
- Fibre

Nearby Stations

-  Aldgate (<1 mins walk)
-  Tower Hill (8 mins walk)
-  Liverpool Street (10 mins walk)

3-5 LITTLE SOMERSET STREET

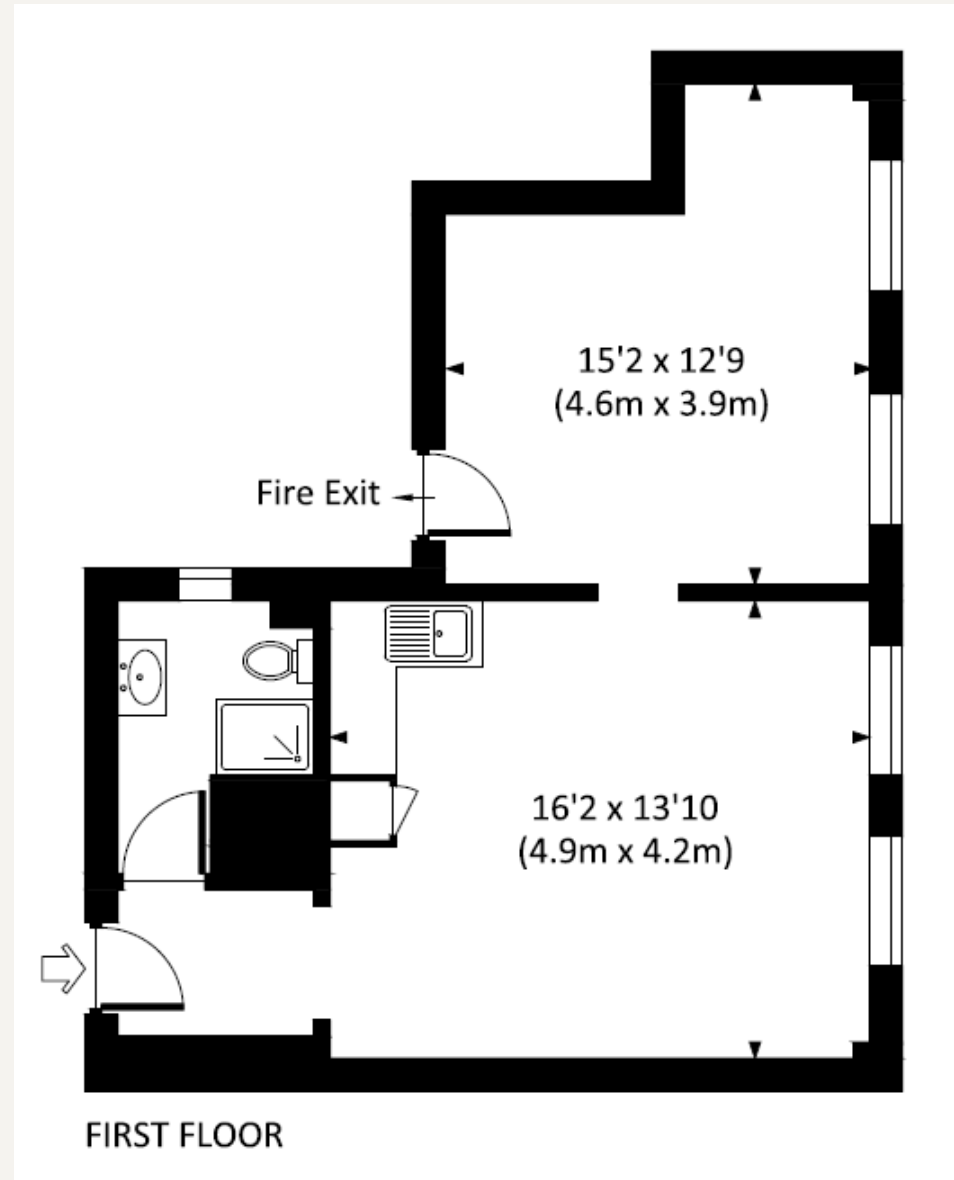
Situated on a quiet side street, moments from Aldgate station, cafés, and local amenities, the property combines convenience with a quiet setting—perfect for businesses seeking focus without sacrificing accessibility.



GALLERY



FLOOR PLAN



Workplace Co.

VIEWINGS

Oliver Bowder MRICS - Surveyor

DD: 02079938075 / **M:** 07712209524

E: ob@theworkplacecompany.co.uk

THEWORKPLACECOMPANY.CO.UK | 020 7993 8075

Misrepresentation Act 1967: These particulars are believed to be correct but their accuracy is not guaranteed and they do not form part of any contract. Unless otherwise stated, all prices and rents are quoted exclusive of VAT