

Excellent location in the heart of Palm Beach Gardens Medical Space



4750 East Park Drive

First Floor – 3,310 Sq.Ft.

Full Floor (Second Floor) – 16,667 Sq.Ft.

Approved for additional building - 26,700 sq. ft.

For more information, please contact:

John Clark Bills, CCIM, SIOR

Licensed Real Estate Broker

3910 RCA Boulevard, Suite 1015

Palm Beach Gardens, FL 33410

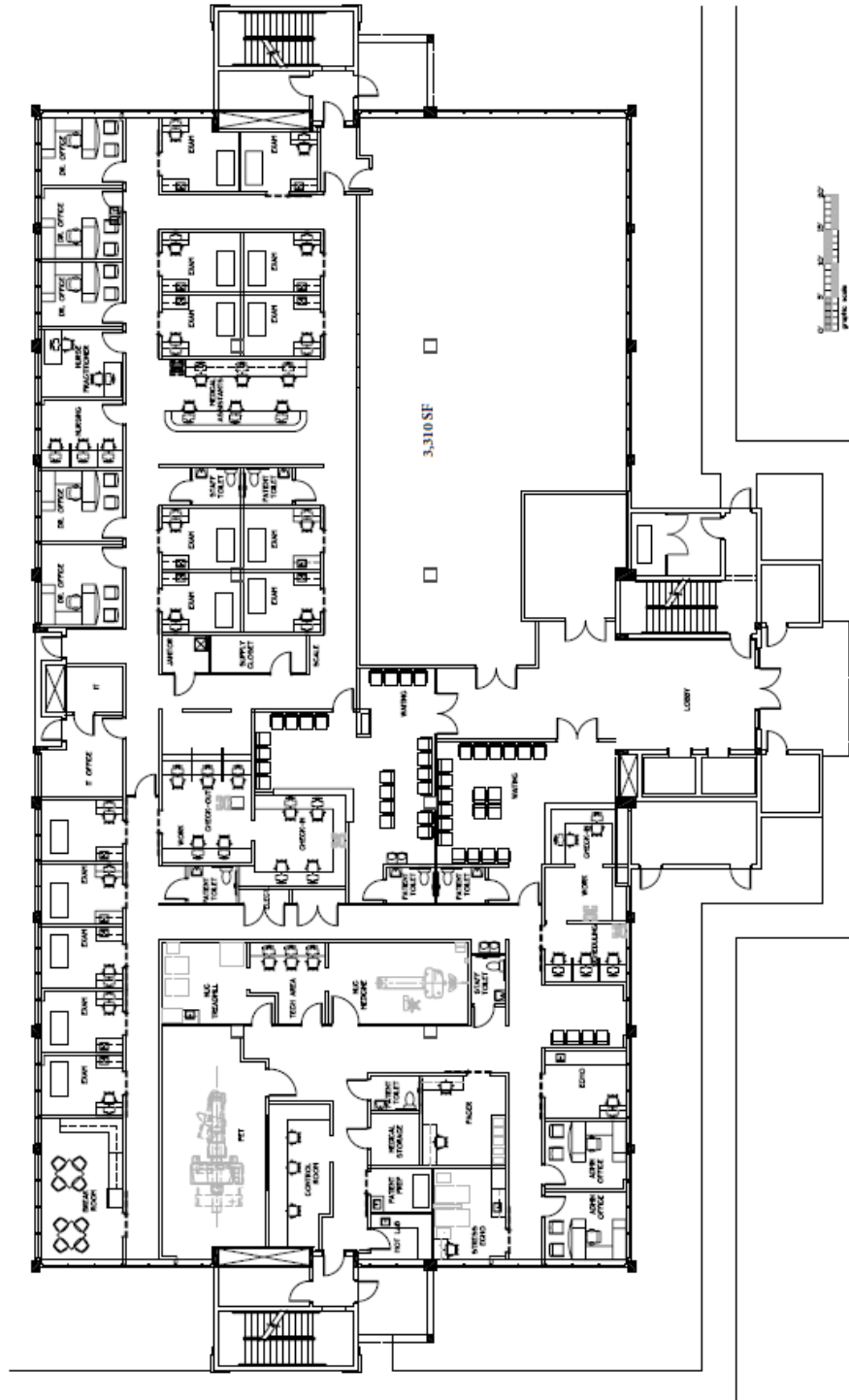
(561) 627-4000 Ext. 4 Fax: (561) 625-9230



www.jcbills.com

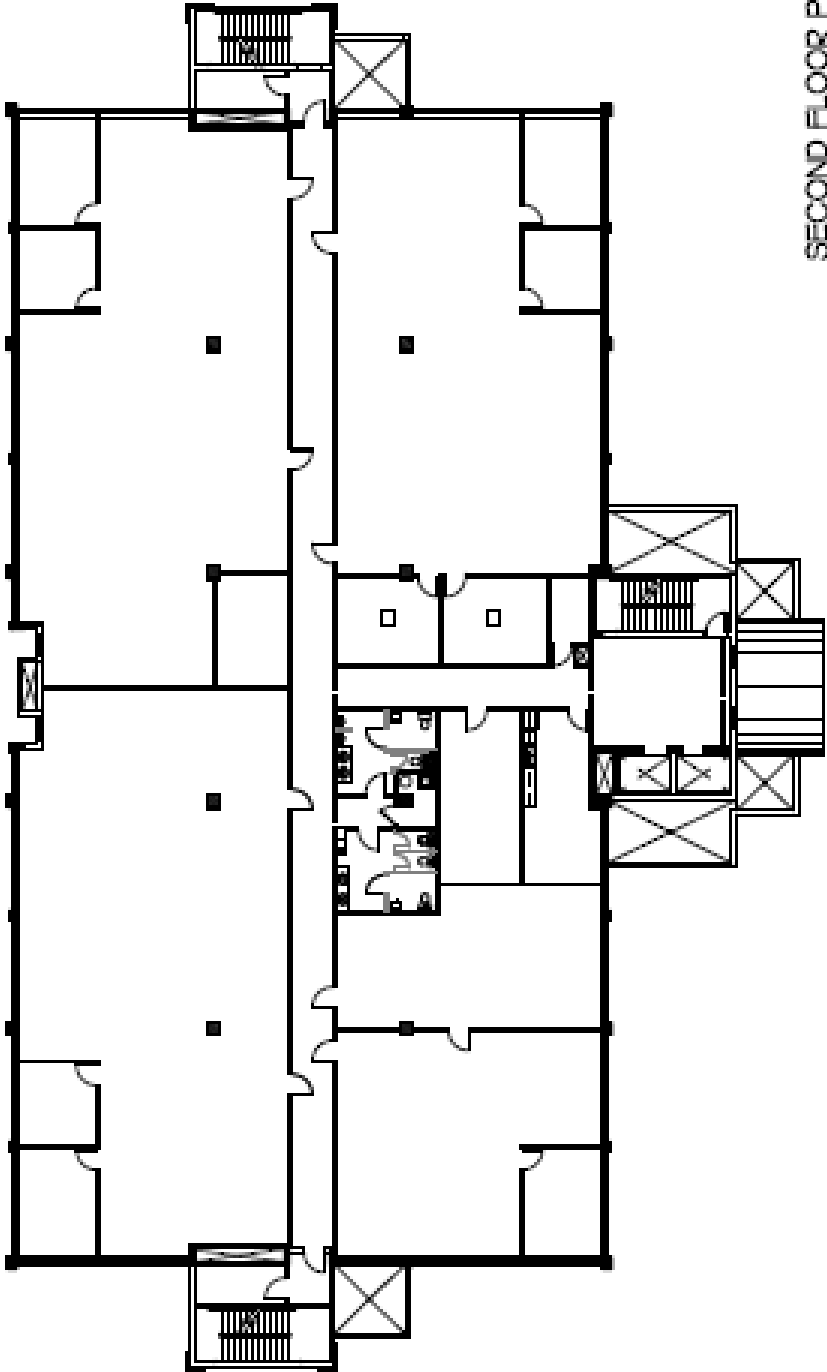
4750 East Park Drive

1st Floor – 3,310 SF



4750 East Park Drive

2nd Floor – 16, 667 SF



SECOND FLOOR PLAN
SCALE 1/8" = 1'-0"

Available for Lease

4750 and 4751 East Park Drive

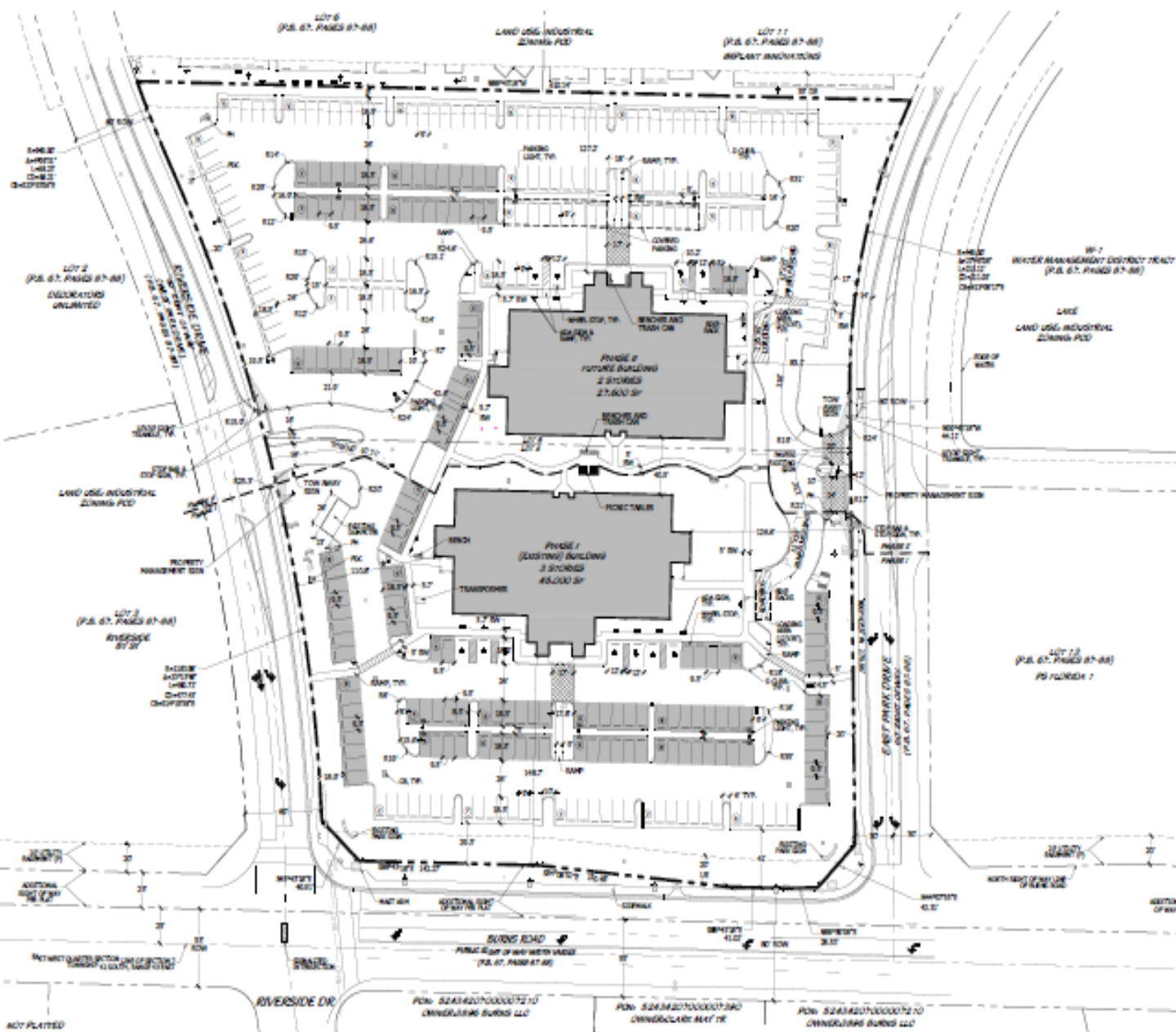


 Existing 45,000 sf

 26,700 sf approved additional building

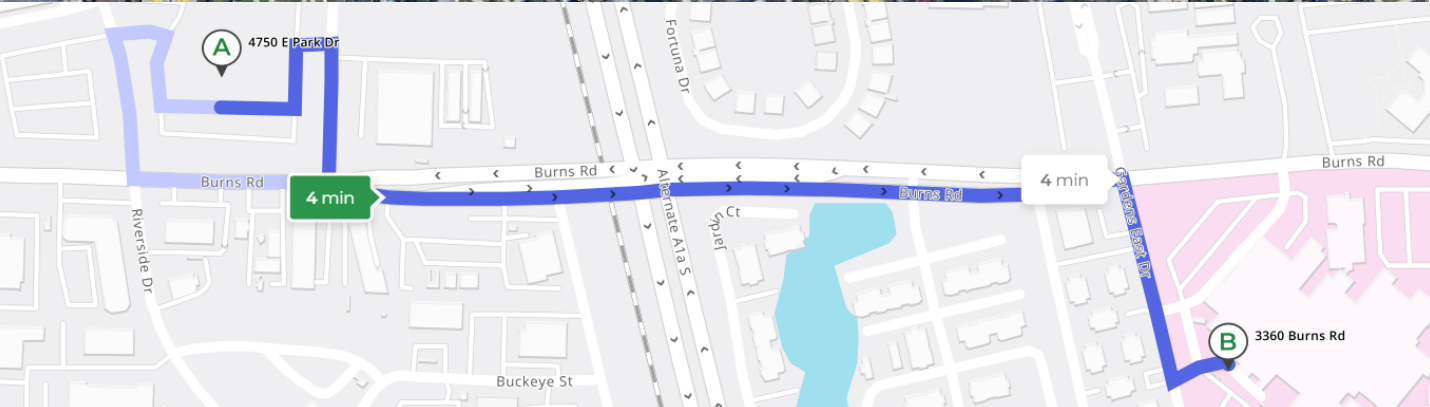
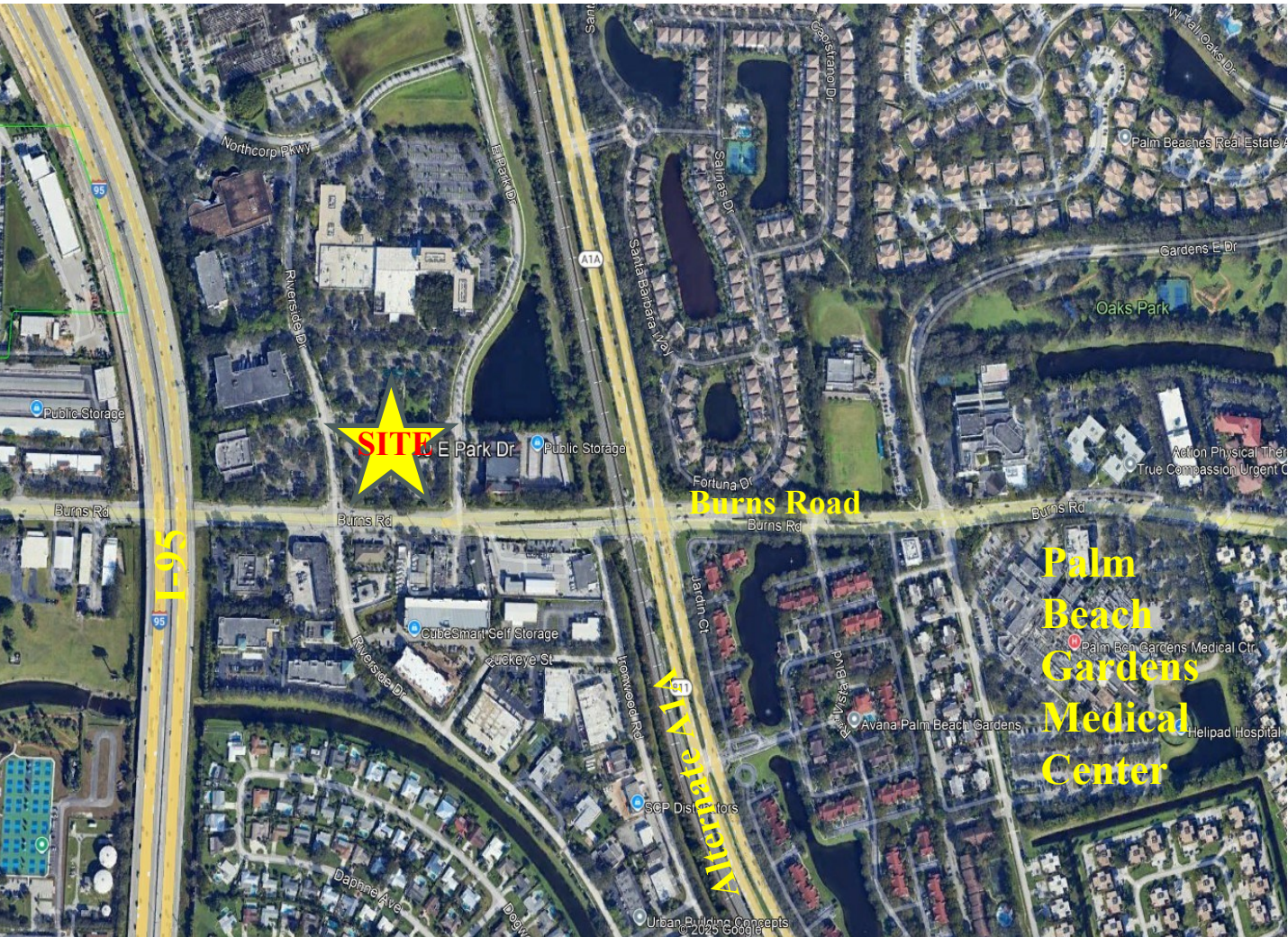
Build to Suit - Medical

Lot 5 – 27,600 SF



4750 East Park Drive

Located within a mile from Palm Beach Gardens Medical Center



Any information, statement, facts or figures presented herein, while not guaranteed or warranted are secured from sources we consider reliable. However, we are not responsible for errors, omissions prior to sale, or lease, or withdrawal from market or change in price without notice.