

57

**NORTH 9TH STREET
WILLIAMSBURG, BROOKLYN**

Between Wythe & Kent Avenues



MERIDIAN
RETAIL LEASING

57

NORTH 9TH STREET WILLIAMSBURG, BROOKLYN

Between Wythe & Kent Avenues

RETAIL/RESTAURANT FOR LEASE

APPROXIMATE SIZE

Ground Floor: 5,000 SF

ASKING RENT

~~\$35,000/Month~~ Reduced
\$32,500/Month

POSSESSION

Immediate

TERM

5-15 Years

FRONTAGE

100 FT

COMMENTS

- Prime North Williamsburg location with substantial foot traffic and excellent visibility
- Flexible layout suitable for a wide range of commercial uses
- Open floor plan
- High ceilings and expansive frontage
- Surrounded by national and local retailers, restaurants, hotels, and high-density residential buildings
- L train at Bedford Avenue + nearby buses

NEIGHBORS

- Laser Wolf • The Backyard Bar • Brooklyn Bowl
- The Whiskey Brooklyn • Mable's • Suitsupply
- Ganni • Skin Laundry • Sugarfish • Glossier

TRANSPORTATION



NOAM AZIZ

Senior Director
212.468.5984
naziz@meridiancapital.com

CARSON SHAHRABANI

Senior Associate
212.468.5927
cshahrabani@meridiancapital.com

MAX FREUDENBERGER

Senior Associate
212.468.5951
mfreudenberger@meridiancapital.com



MERIDIAN
RETAIL LEASING

All information supplied is from sources deemed reliable and is furnished subject to errors, omissions, modifications, removal of the listing from sale or lease, and to any listing conditions, including the rates and manner of payment of commissions for particular offerings imposed by Meridian Capital Group. This information may include estimates and projections prepared by Meridian Capital Group with respect to future events, and these future events may or may not actually occur. Such estimates and projections reflect various assumptions concerning anticipated results. While Meridian Capital Group believes these assumptions are reasonable, there can be no assurance that any of these estimates and projections will be correct. Therefore, actual results may vary materially from these estimates and projections. Any square footage dimensions set forth are approximate.

57 NORTH 9TH STREET

WILLIAMSBURG, BROOKLYN | Between Wythe & Kent Avenues

RETAIL/RESTAURANT FOR LEASE



INTERIOR

NOAM AZIZ
Senior Director
212.468.5984
naziz@meridiancapital.com

CARSON SHAHRABANI
Senior Associate
212.468.5927
cshahrabani@meridiancapital.com

MAX FREUDENBERGER
Senior Associate
212.468.5951
mfreudenberger@meridiancapital.com



MERIDIAN
RETAIL LEASING

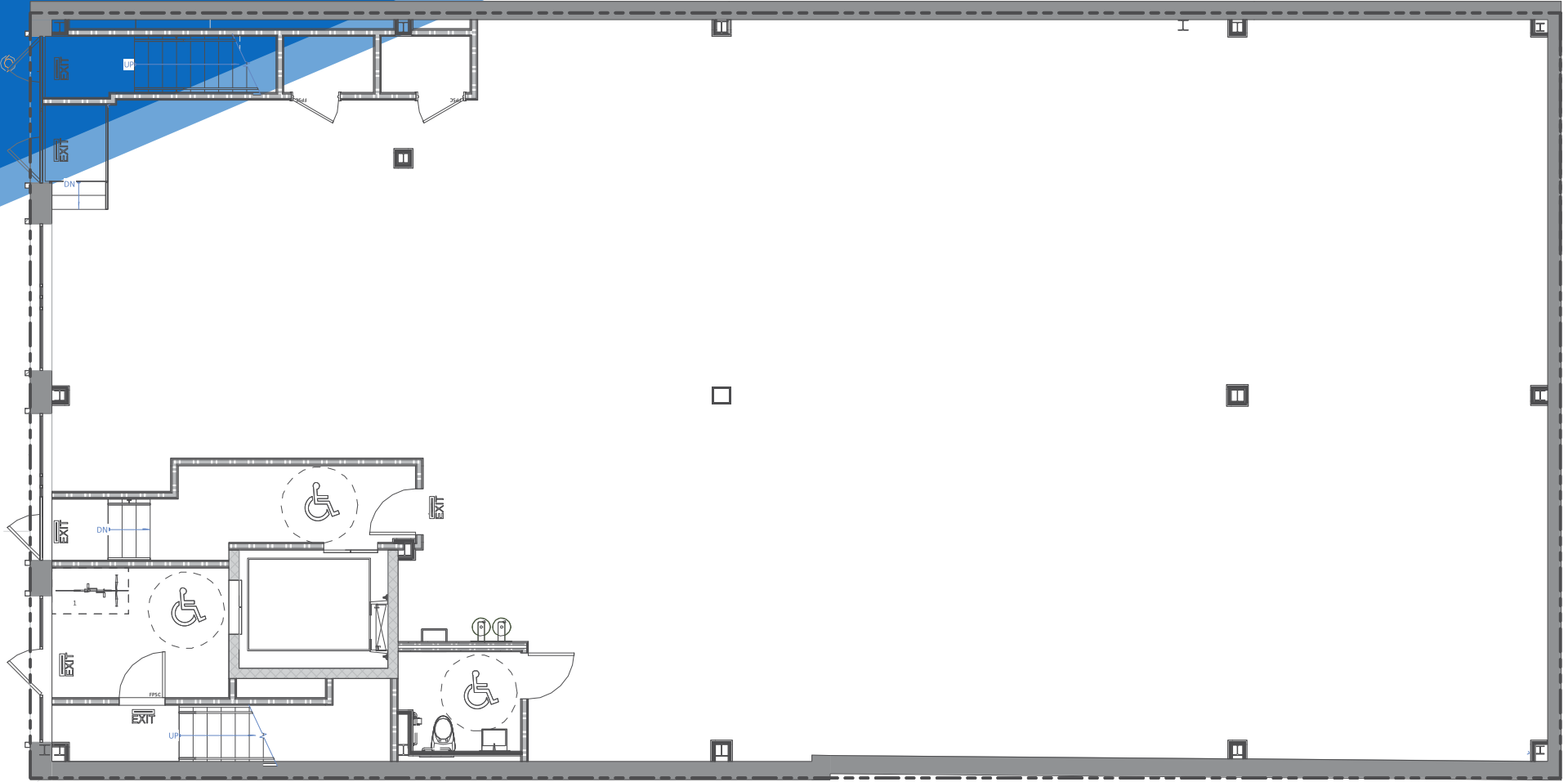
All information supplied is from sources deemed reliable and is furnished subject to errors, omissions, modifications, removal of the listing from sale or lease, and to any listing conditions, including the rates and manner of payment of commissions for particular offerings imposed by Meridian Capital Group. This information may include estimates and projections prepared by Meridian Capital Group with respect to future events, and these future events may or may not actually occur. Such estimates and projections reflect various assumptions concerning anticipated results. While Meridian Capital Group believes these assumptions are reasonable, there can be no assurance that any of these estimates and projections will be correct. Therefore, actual results may vary materially from these estimates and projections. Any square footage dimensions set forth are approximate.

57 NORTH 9TH STREET

WILLIAMSBURG, BROOKLYN | Between Wythe & Kent Avenues

RETAIL/RESTAURANT FOR LEASE

FLOOR PLAN



NOAM AZIZ

Senior Director
212.468.5984
naziz@meridiancapital.com

CARSON SHAHRABANI

Senior Associate
212.468.5927
cshahrabani@meridiancapital.com

MAX FREUDENBERGER

Senior Associate
212.468.5951
mfreudenberger@meridiancapital.com



MERIDIAN
RETAIL LEASING

All information supplied is from sources deemed reliable and is furnished subject to errors, omissions, modifications, removal of the listing from sale or lease, and to any listing conditions, including the rates and manner of payment of commissions for particular offerings imposed by Meridian Capital Group. This information may include estimates and projections prepared by Meridian Capital Group with respect to future events, and these future events may or may not actually occur. Such estimates and projections reflect various assumptions concerning anticipated results. While Meridian Capital Group believes these assumptions are reasonable, there can be no assurance that any of these estimates and projections will be correct. Therefore, actual results may vary materially from these estimates and projections. Any square footage dimensions set forth are approximate.

57 NORTH 9TH STREET

WILLIAMSBURG, BROOKLYN | Between Wythe & Kent Avenues

RETAIL/RESTAURANT FOR LEASE

NEIGHBORS

NOAM AZIZ
Senior Director
212.468.5984
naziz@meridiancapital.com

CARSON SHAHRABANI
Senior Associate
212.468.5927
cshahrabani@meridiancapital.com

MAX FREUDENBERGER
Senior Associate
212.468.5951
mfreudenberg@meridiancapital.com



MERIDIAN
RETAIL LEASING

All information supplied is from sources deemed reliable and is furnished subject to errors, omissions, modifications, removal of the listing from sale or lease, and to any listing conditions, including the rates and manner of payment of commissions for particular offerings imposed by Meridian Capital Group. This information may include estimates and projections prepared by Meridian Capital Group with respect to future events, and these future events may or may not actually occur. Such estimates and projections reflect various assumptions concerning anticipated results. While Meridian Capital Group believes these assumptions are reasonable, there can be no assurance that any of these estimates and projections will be correct. Therefore, actual results may vary materially from these estimates and projections. Any square footage dimensions set forth are approximate.