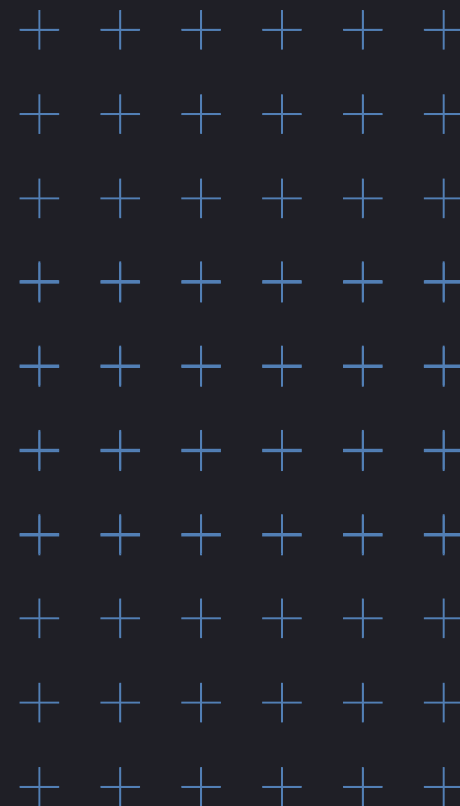


BANNER

PROPERTY GROUP



18770 NE 6TH AVENUE
MIAMI, FL 33179



MIAMI Freezer Building

±59,666 SF For Lease

CBRE

Larry Genet
Vice Chairman

+1305 807 0004
larry.genet@cbre.com

Tom O'Loughlin
Vice Chairman

+1954 817 3919
tom.oloughlin@cbre.com

Kevin Kelly
Senior Vice President
National Food Facilities Group
+1972 375 6306
kevin.kelly@cbre.com

Property Details

Highlights

- + ±59,666 SF available
- + Central location in South Florida within 20 minutes of Port Everglades, Port of Miami, FLL airport and MIA airport
- + 8 insulated dock-high doors with levelers
- + Twin-T roof
- + 5,400 Amp, 3-phase 277/480 Volt power

Freezer

- + 100% freezer warehouse with sub-0° capability
- + 25' clear height
- + Cooled loading dock (sub-40°F)
- + Racking in-place

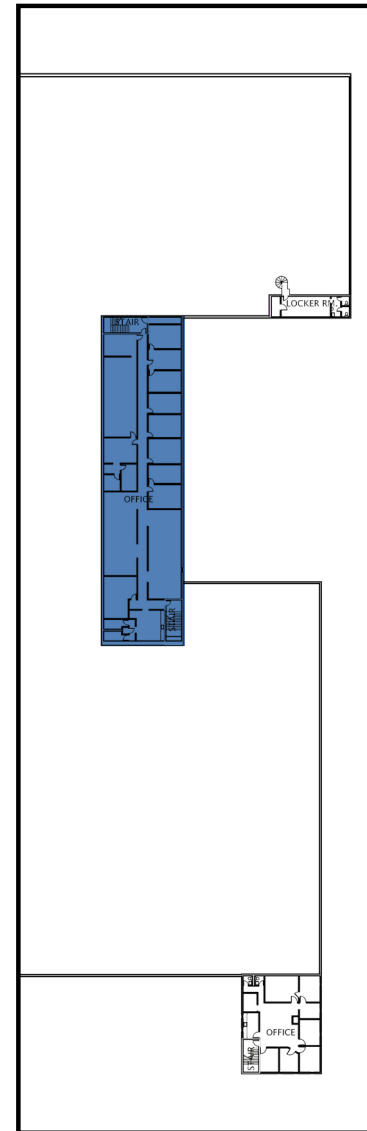
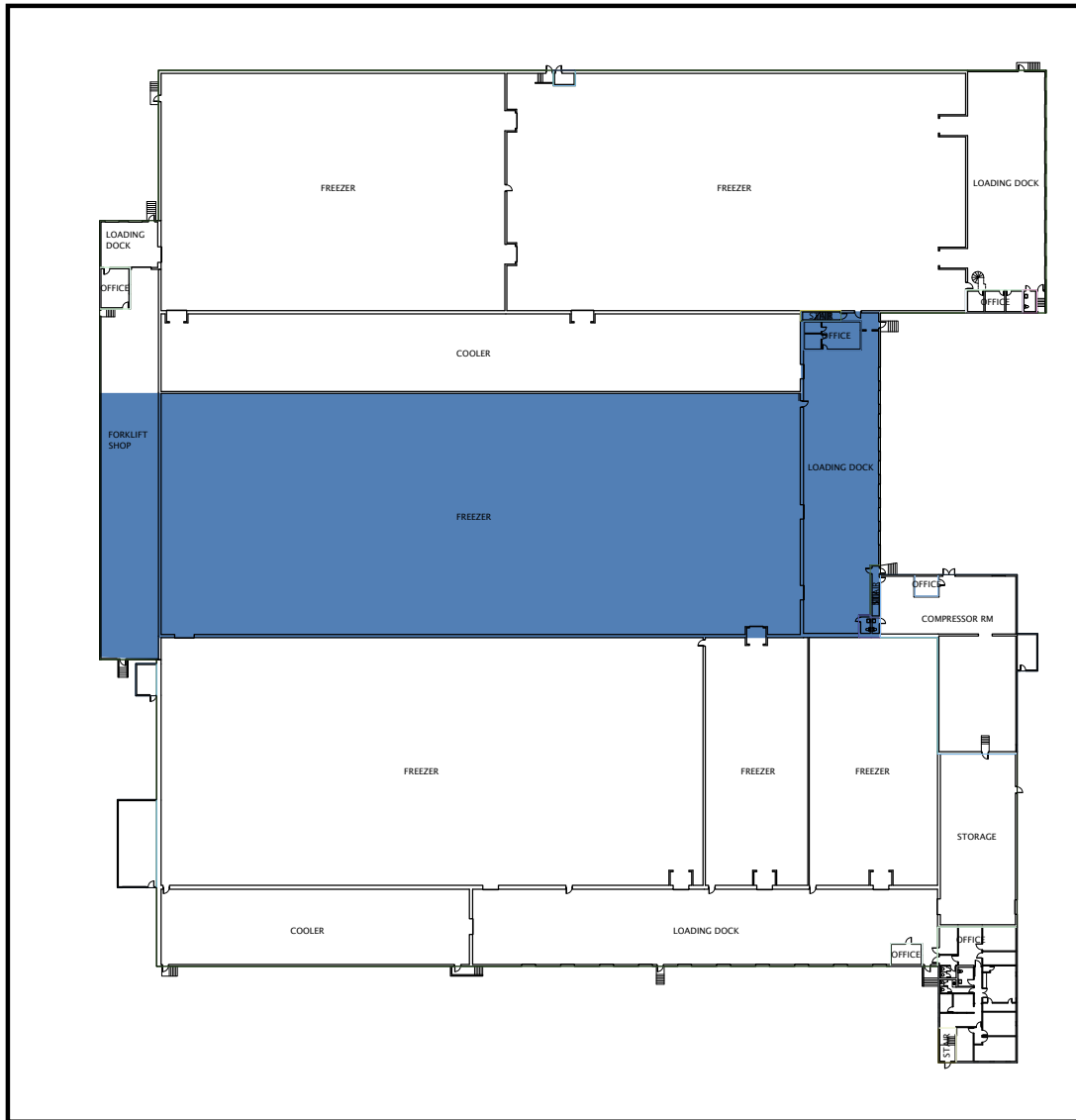
Exterior

- + Fully fenced
- + Truck court depth: 180'
- + 25 car parks available
- + 35 trailer spots



Floor Plan

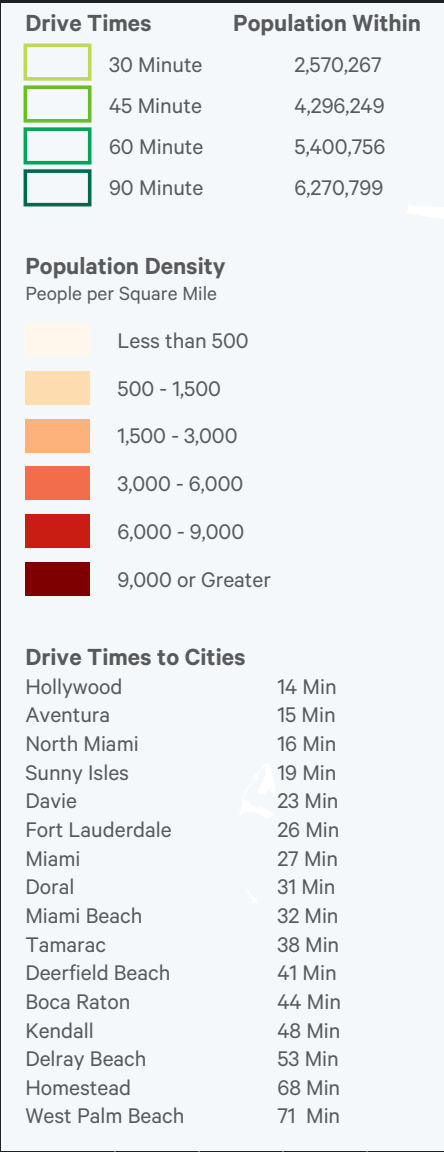
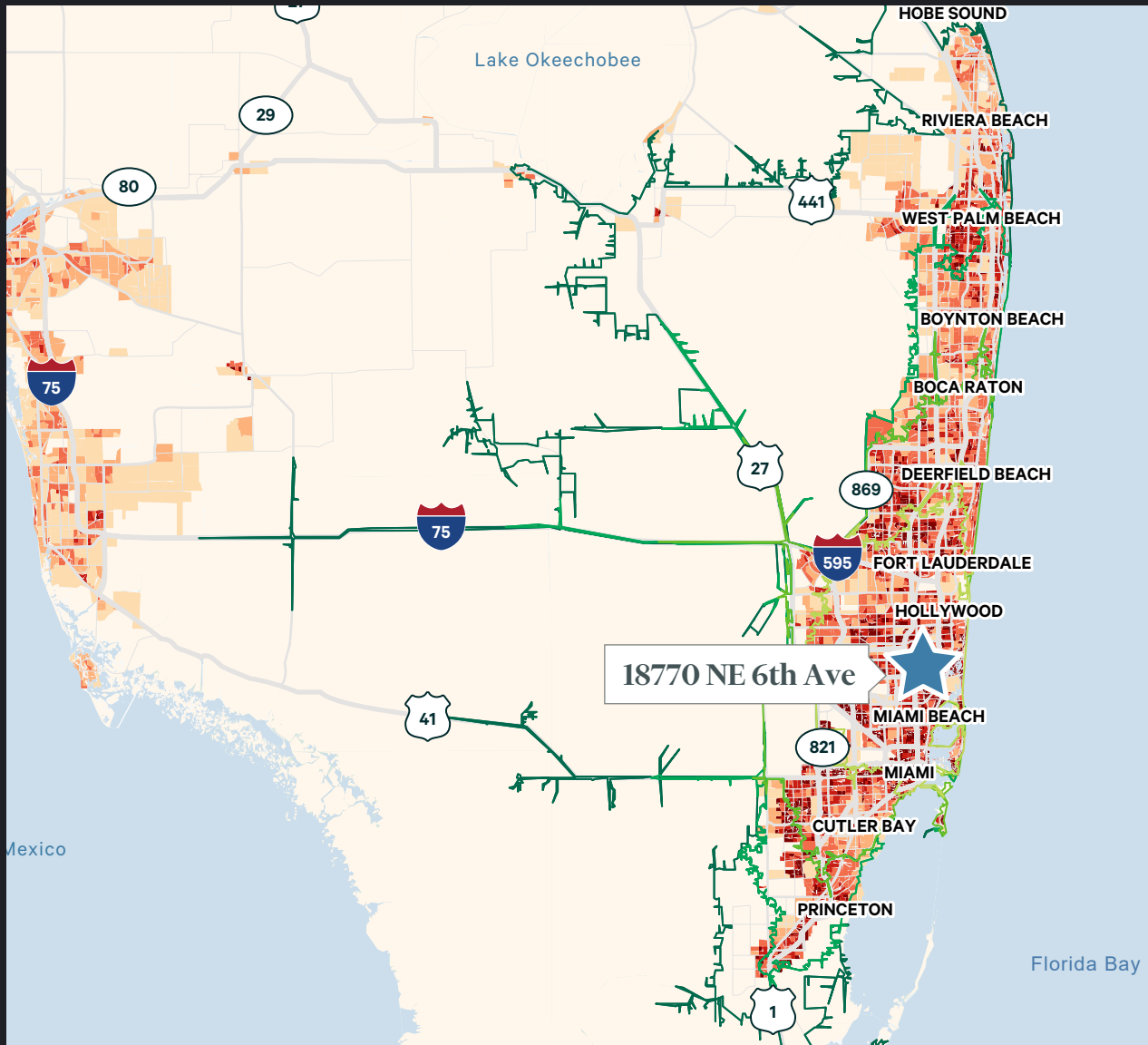
±59,666 SF AVAILABLE

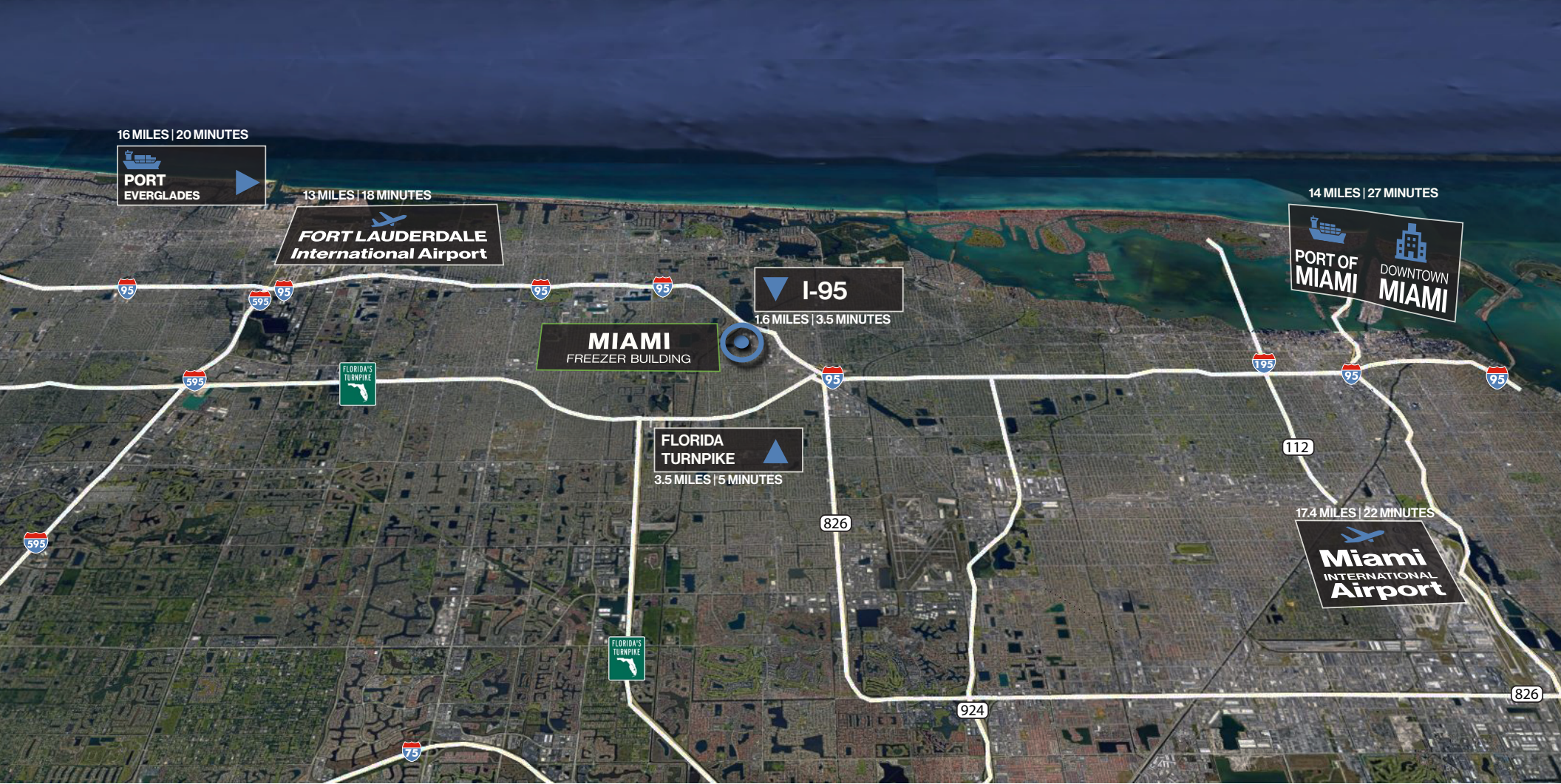


FIRST FLOOR

SECOND FLOOR

Drive Time





Port Everglades

16 Miles
20 Minutes



**Fort Lauderdale/
Hollywood Intl.
Airport**

13 Miles
18 Minutes



I-95

1.6 Miles
3.5 Minutes



**Downtown
Fort Lauderdale**

16.3 Miles
18 Minutes



Port of Miami

15.6 Miles
28 Minutes



Miami Intl. Airport

17.4 Miles
22 Minutes



**Florida
Turnpike**

3.5 Miles
5 Minutes



**Downtown
Miami**

14 Miles
27 Minutes

CBRE

CONTACT:

Larry Genet

Vice Chairman

+1 305 807 0004

larry.genet@cbre.com

Tom O'Loughlin

Vice Chairman

+1 954 817 3919

tom.oloughlin@cbre.com

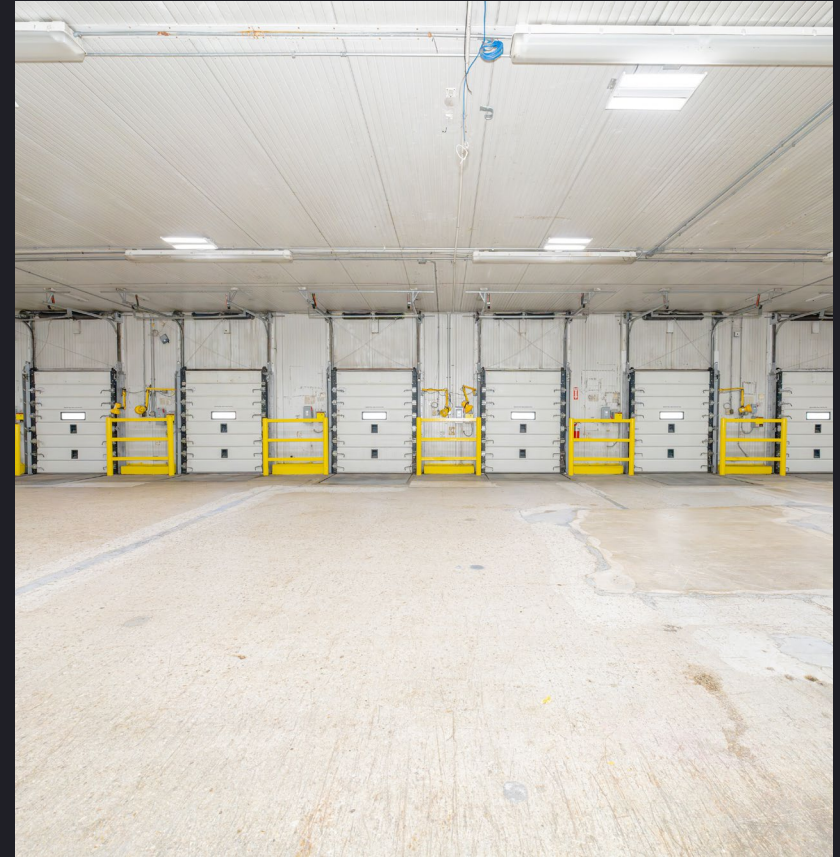
Kevin Kelly

Senior Vice President

National Food Facilities Group

+1 972 375 6306

kevin.kelly@cbre.com



MIAMI
Freezer Building

±59,666 SF For Lease

18770 NE 6TH AVENUE
MIAMI, FL 33179



BANNER

PROPERTY GROUP