



FOR SUBLEASE

1707 EYE STREET

Bakersfield, CA

Available Suites

- **Suite 108:** 1,558 RSF
- **Suite 201:** 476 RSF

Asking Rent: \$4,325/month (includes utilities)

FEATURES

- Total Available: ±2,034 RSF
- Historic Californian Building
- Walking distance to many local eatery's—The Padre, Mama Mia, Locale, Bonnie's Best
- Walking distance to the Kern County Court House and other Government Departments
- Private parking lot
- Sublease Term Expires: July 31, 2026



**CUSHMAN &
WAKEFIELD**

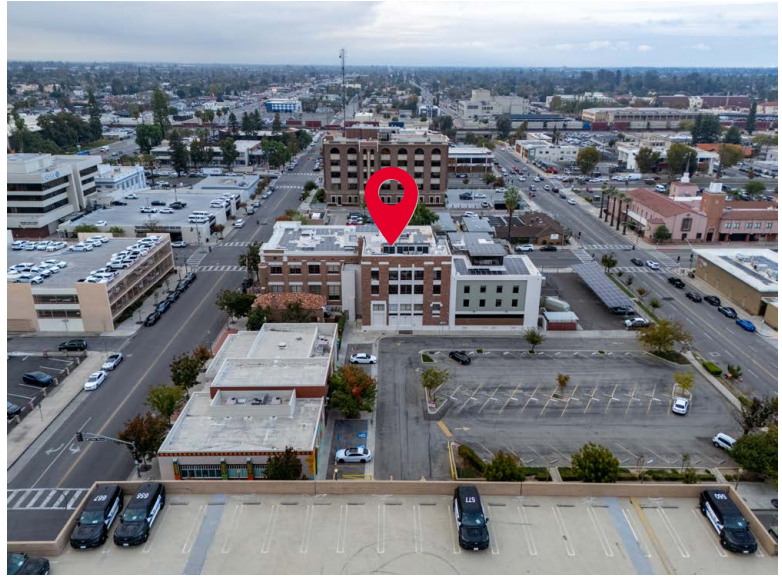
Alex Balfour, SIOR

Executive Director

+1 661 304 2521

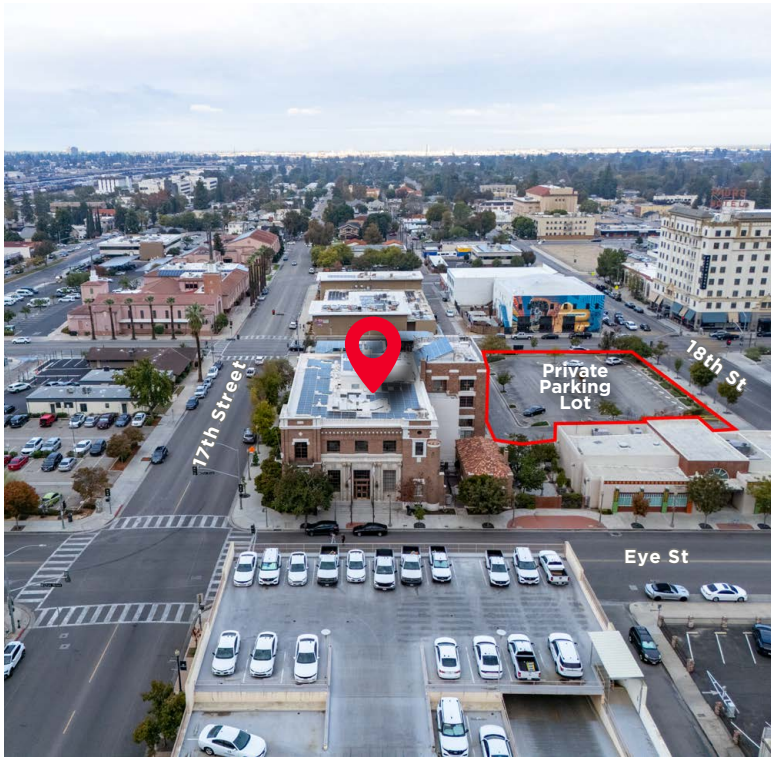
alex.balfour@cushwake.com

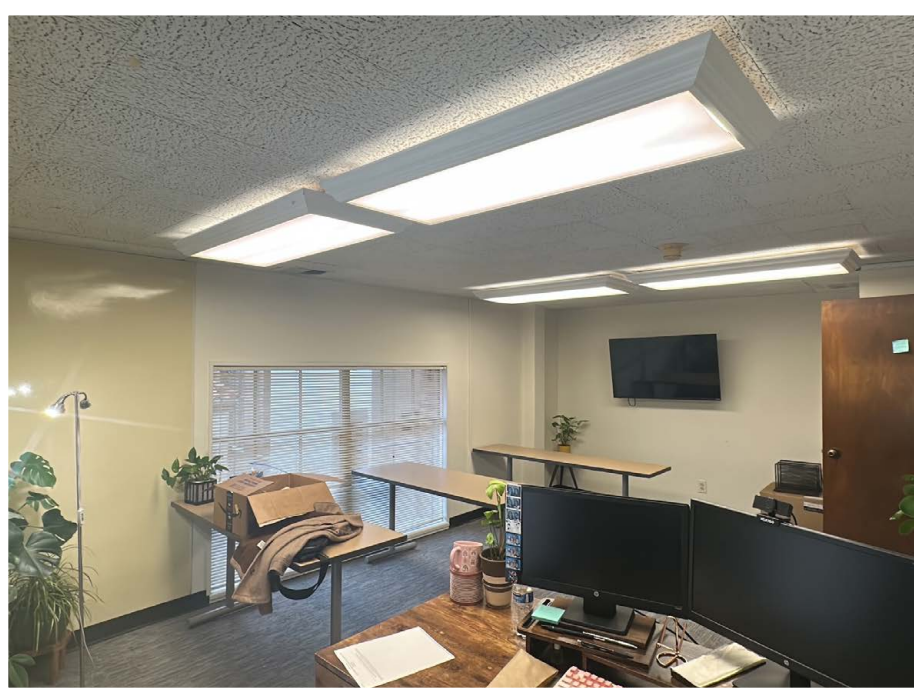
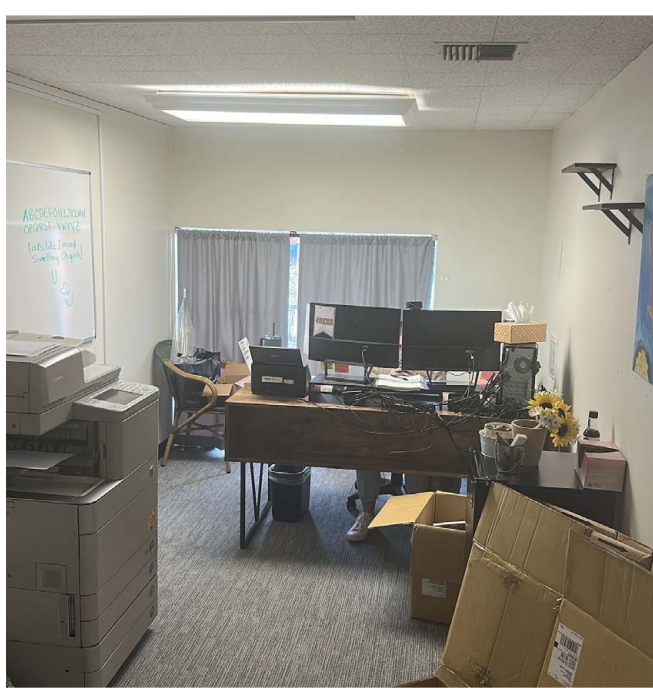
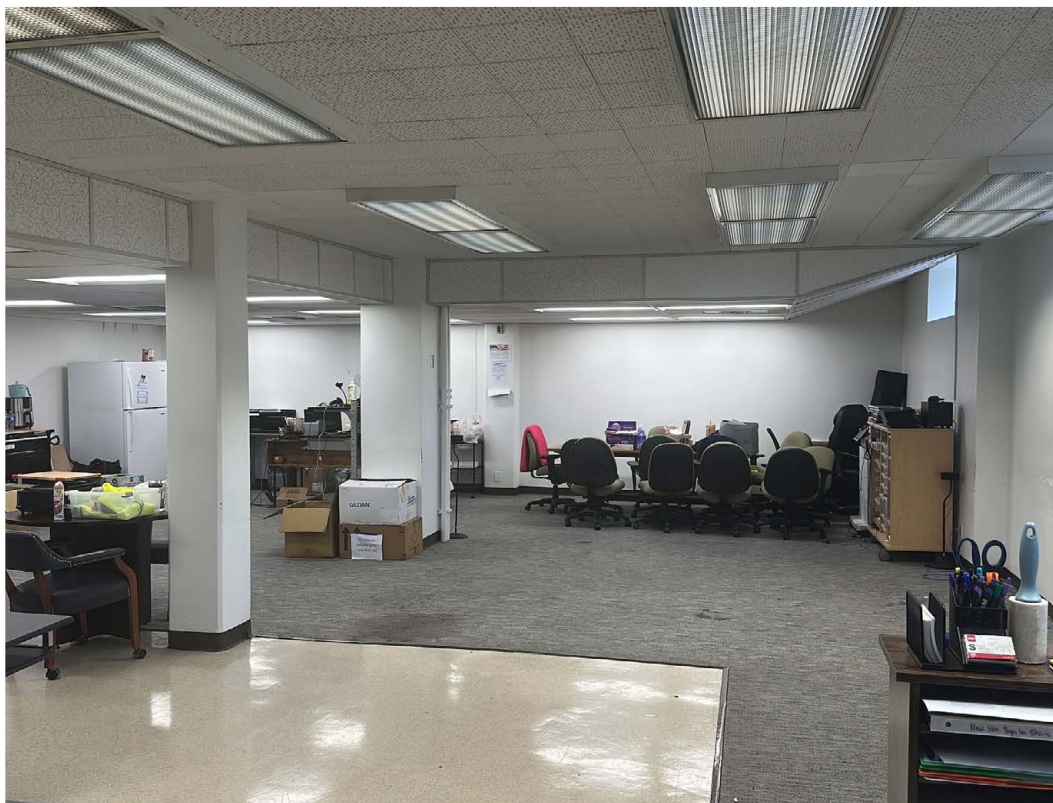
LIC. 01709847



PADRE HOTEL

THE HISTORIC
BAKERSFIELD
FOX THEATER
ESTABLISHED 1930







Alex Balfour, SIOR
Executive Director
+1 661 304 2521
alex.balfour@cushwake.com
Lic. #01709847

5060 California Avenue
Suite 1000
Bakersfield, CA 93309
+1 661 327 2263
Broker Lic. #01880493
cushmanwakefield.com



©2025 Cushman & Wakefield. All rights reserved. The information contained in this communication is strictly confidential. This information has been obtained from sources believed to be reliable but has not been verified. NO WARRANTY OR REPRESENTATION, EXPRESS OR IMPLIED, IS MADE AS TO THE CONDITION OF THE PROPERTY (OR PROPERTIES) REFERENCED HEREIN OR AS TO THE ACCURACY OR COMPLETENESS OF THE INFORMATION CONTAINED HEREIN, AND SAME IS SUBMITTED SUBJECT TO ERRORS, OMISSIONS, CHANGE OF PRICE, RENTAL OR OTHER CONDITIONS, WITHDRAWAL WITHOUT NOTICE, AND TO ANY SPECIAL LISTING CONDITIONS IMPOSED BY THE PROPERTY OWNER(S). ANY PROJECTIONS, OPINIONS OR ESTIMATES ARE SUBJECT TO UNCERTAINTY AND DO NOT SIGNIFY CURRENT OR FUTURE PROPERTY PERFORMANCE.