

FOR SUBLEASE 9260 Isaac Street, Suite G, Santee, Ca 92071



2,731 SqFt

For more information contact:

Robbie Cornell  
robbie@tollercornell.com  
CA Lic # 01702034

Mick Toller  
mick@tollercornell.com  
CA Lic # 01355557

619-456-2380



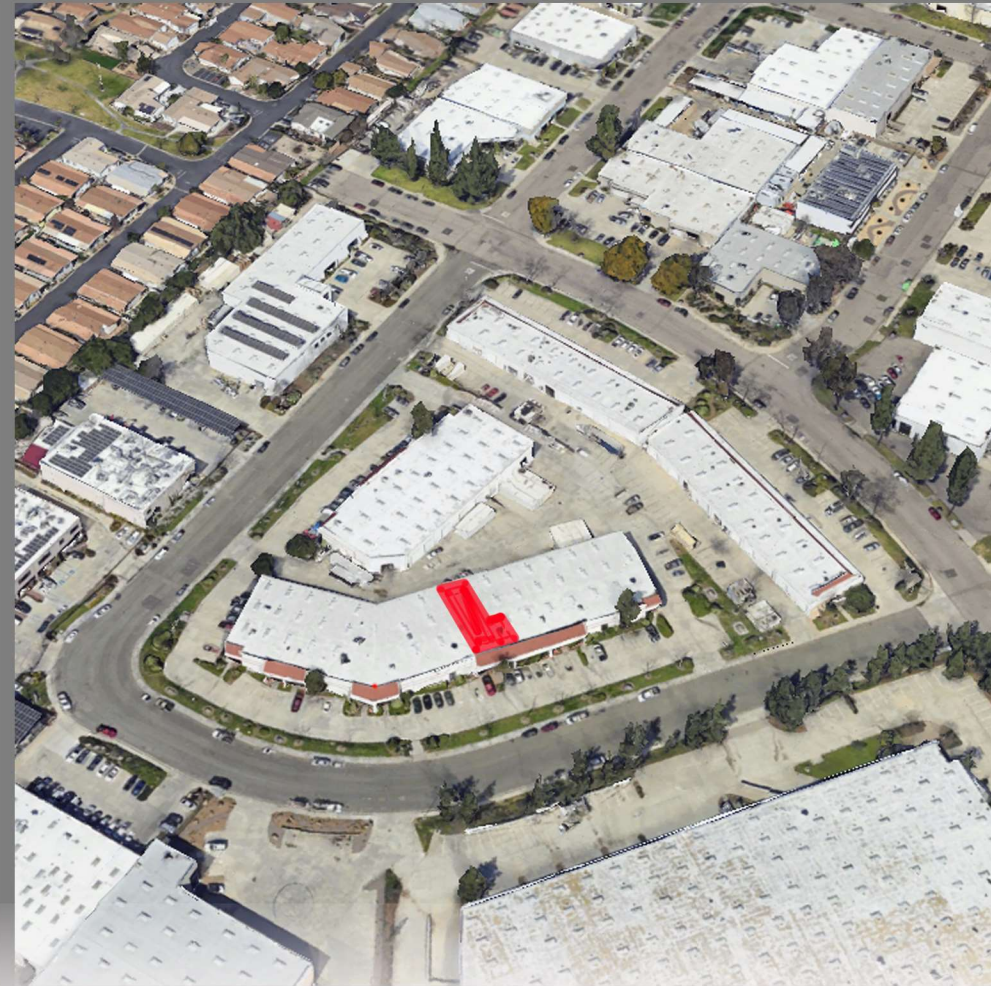
**TOLLER CORNELL**  
COMMERCIAL REAL ESTATE

The information contained herein has been obtained from sources we deem reliable. While we have no reason to doubt its accuracy, we do no guarantee it

# FOR SUBLEASE 9260 Isaac Street, Suite G, Santee, Ca 92071

## Property Features:

- Multi-Tenant Concrete Tilt-Up Building
- Approx. 2,731 SqFt
- Office Build-out: See Floor Plans
- One office area restrooms
- Warehouse Lighting
- 200 amp 3 Phase Power
- One (1) 12Ft x 14Ft Grade Level Loading Doors
- City of Santee IG (General Industrial) Zoning
- Just off Highway 67 at Woodside Ave., in the desirable Wheatlands Industrial Park
- Sub-Lease Rate: \$1.75 Industrial Gross



For more information contact:

**Robbie Cornell**  
robbie@tollercornell.com  
CA Lic # 01702034

**Mick Toller**  
mick@tollercornell.com  
CA Lic # 01355557

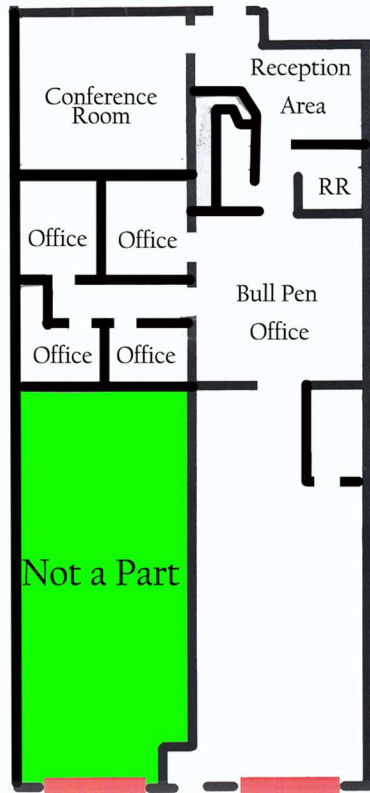
**619-456-2380**



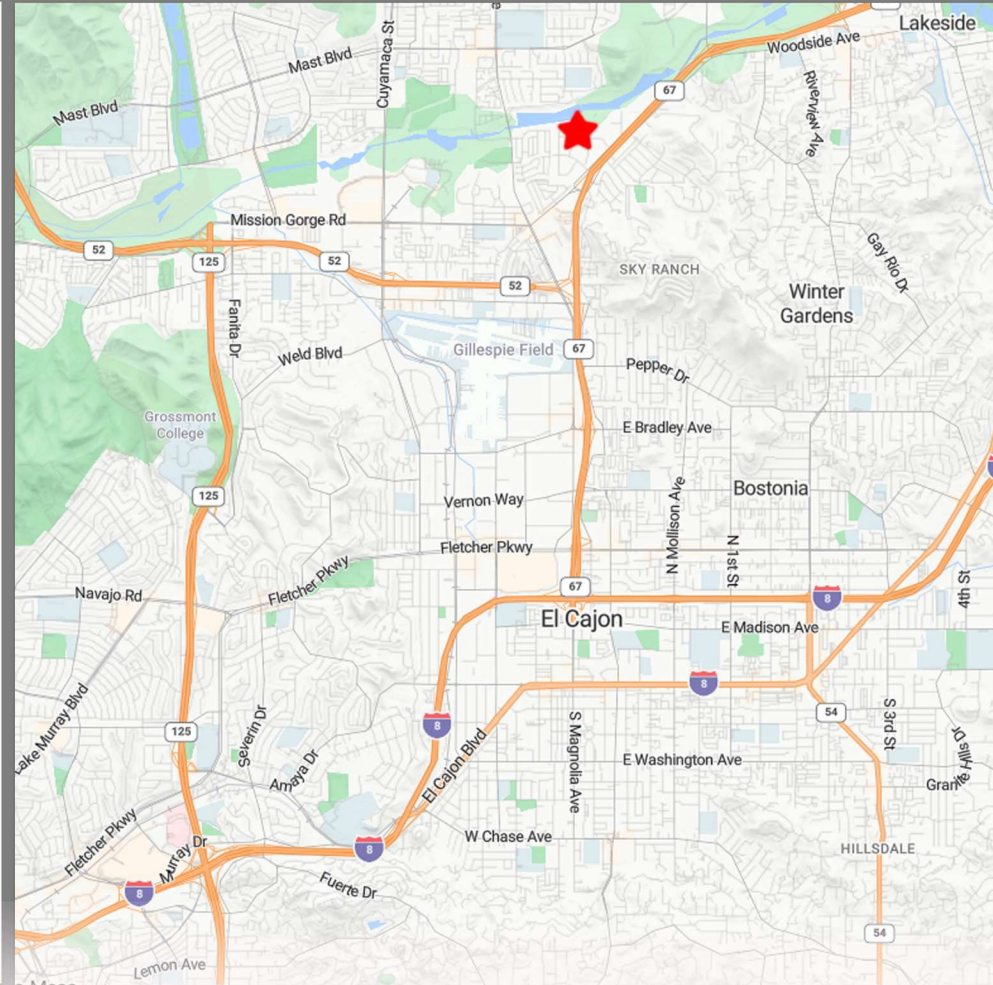
**TOLLER CORNELL**  
COMMERCIAL REAL ESTATE

# FOR SUBLEASE 9260 Isaac Street, Suite G, Santee, Ca 92071

Floor Plan



\*Not To Scale



For more information contact:

**Robbie Cornell**  
robbie@tollercornell.com  
CA Lic # 01702034

**Mick Toller**  
mick@tollercornell.com  
CA Lic # 01355557

619-456-2380



**TOLLER CORNELL**  
COMMERCIAL REAL ESTATE