

LONDON

# Welcome to eOffice Holborn

A flexible office solution with more  
freedom for you and your business.

+44 2078 514700 | [hello@eoffice.net](mailto:hello@eoffice.net)

eoffice®  
the alternative workspace

Why choose eOffice?

At eOffice, we bring over 20 years of experience in providing innovative and flexible office solutions.

Office solutions for the changing world of work

We offer flexible managed office solutions that give you the flexibility to change as your business does.



# 5 good reasons to choose eOffice for your next workspace.

Our packages help you work in a way that suits you, your employees and the nature of your business. As a Certified B Corporation we also recognise our social and environmental responsibilities, balance profit with purpose and are committed to building a fairer, more inclusive and sustainable future for the people we work with.

**Certified**



**Corporation**

## 1 - We Have a Bespoke 1-1 Client Approach

We believe that no two businesses are the same, which is why our dedicated team works closely with you to understand your specific requirements, tailoring solutions that perfectly fit your company's needs and goals.

## 2 - We're Environmentally Conscious

As a B Corp certified company, eOffice is committed to sustainability and ethical practices. We prioritise eco-friendly initiatives, ensuring that our operations contribute to a healthier planet while helping you reduce your own environmental footprint.

## 3 - We Provide an Exceptional Service to our Clients

We pride ourselves on delivering exceptional customer service. From the moment you engage with us, you'll experience professionalism, responsiveness, and a deep commitment to your success.

## 4 - There are no Hidden Fees or Extras

Transparency is key to building trust, which is why eOffice operates with no hidden fees. What you see is what you get—clear, honest pricing with no surprises.

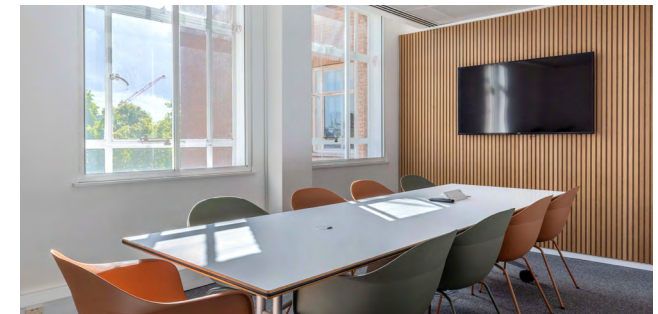
## 5 - We Have Plug & Play Solutions for all Your Tech

Get started with ease! Our hassle-free solutions allow you to seamlessly integrate our services into your business, with minimal setup and maximum efficiency. Whether you're scaling up or transitioning to a new setup, we make it simple to hit the ground running.



# Flexible office solutions in Holborn

A range of fully managed office spaces for small and large teams on vibrant High Holborn



Located where the West End joins The City of London, these brand new managed office spaces offer flexibility, an energetic atmosphere and excellent transport links. Sit on multiple floors, right on vibrant High Holborn, these managed office space are flooded with natural light. Featuring fully furnished and refurbished interior, they are all self contained with stylish meeting and conference rooms, break out areas, kitchen, advanced IT infrastructure and could cater for small to large teams of more than a 100. The building benefits from 24/7 security access on the Ground Floor and dual aspects views, facing the

magnificent and peaceful St John Lawn Gardens at the rear and the buzzing high street at the front. The perfect mix of coffees, restaurants, bars and shops at your doorstep and proximity of Holborn and Chancery Lane tube stations, makes this location a real winner.

When choosing a new office, we know that the combination of flexible conditions, state of the art technology and beautiful design is difficult to beat. Our new Holborn managed office spaces tick every box.

# eOffice Holborn

Lincoln House - 296 – 302 High Holborn,  
London WC1V 7JH



The new Holborn space offers multiple self contained office space options, from small to large, from 6 to 100 people.

## Amenities



**B Corp Certified Space**



**Super Fast Dedicated Fibre Connection**



**Dedicated Kitchen**



**Dedicated Meeting Rooms and Boardrooms**



**Dedicated Breakout Areas**



**Showers**



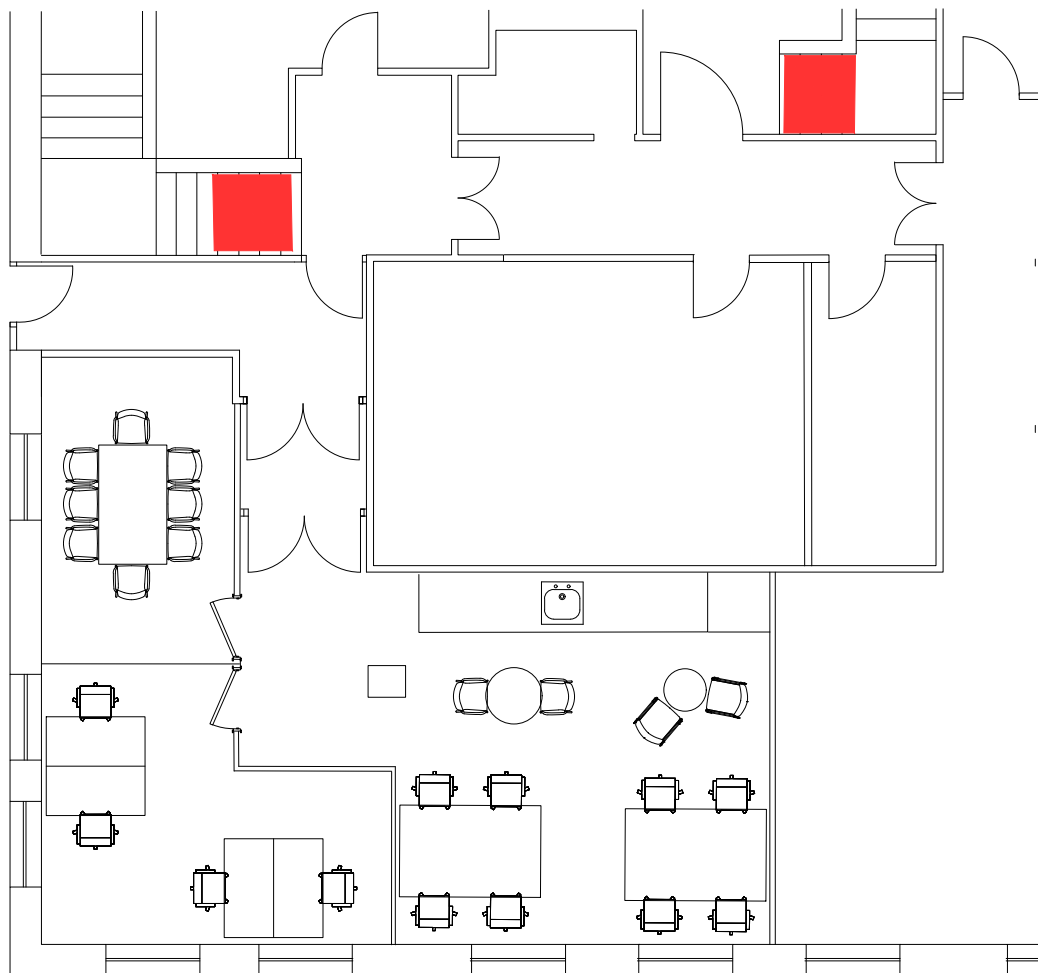
**Bike racks**



**Space can be Fully Bespoke**

# Floorplan

1st Floor

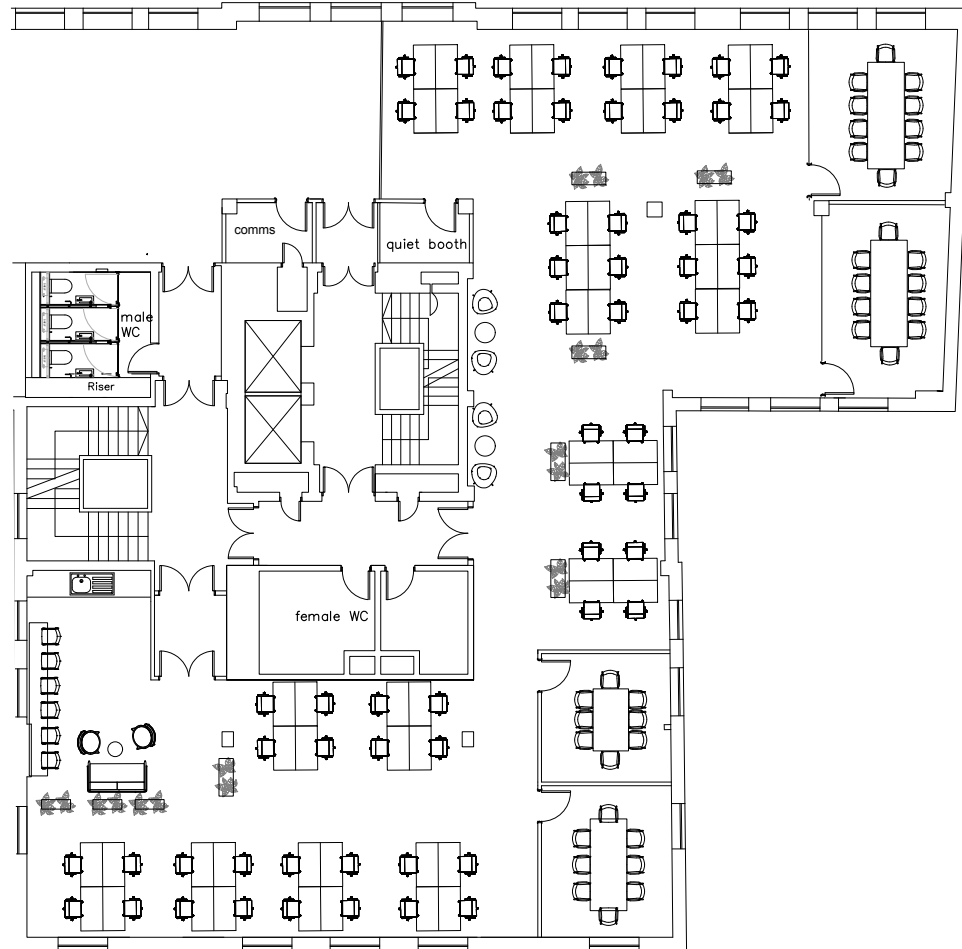


[View / download 2D floor plan >](#)

# Floorplan

## 2nd Floor

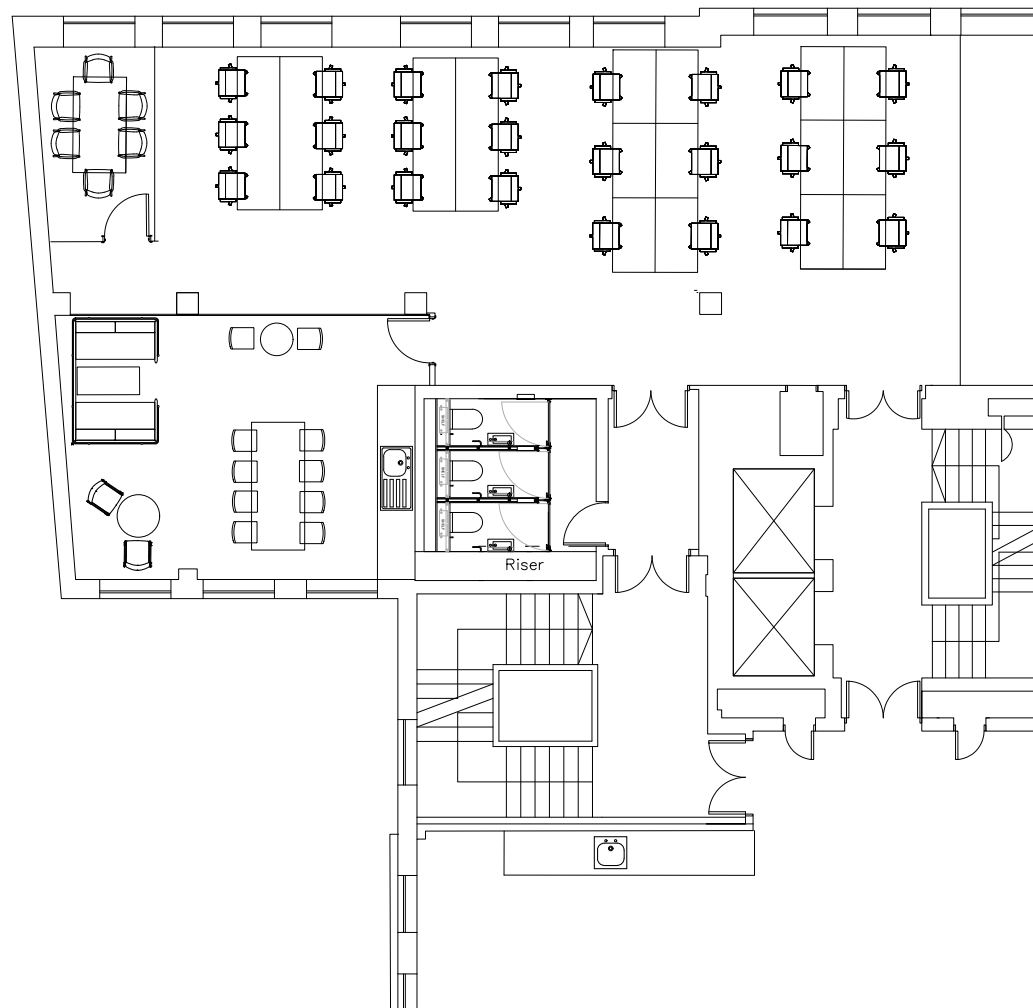
Approx 3,500 sq ft



[View / download 2D floor plan >](#)

# Floorplan

5th Floor



[View / download 2D floor plan >](#)



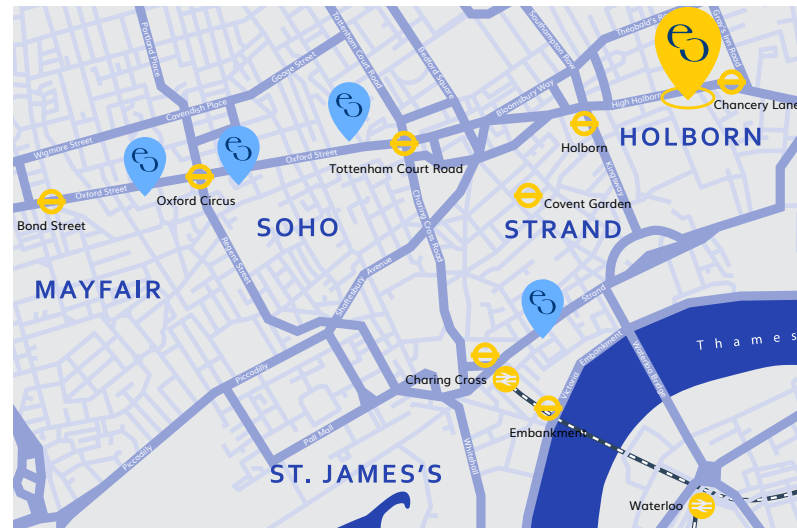
# Location & Contact

## Location

Lincoln House, 296 – 302  
High Holborn, London WC1V 7JH

## Contact

+44 2078 514700  
london@eoffice.net



**Holborn**  
5 min walk



**Chancery Lane**  
2 min walk



**eoffice**<sup>®</sup>  
the alternative workspace