

4,086 SQUARE FOOT OFFICE CONDOMINIUM FOR LEASE

Colony Square of Denbigh
12725 McManus Boulevard, Unit 1A
Newport News, VA 23602



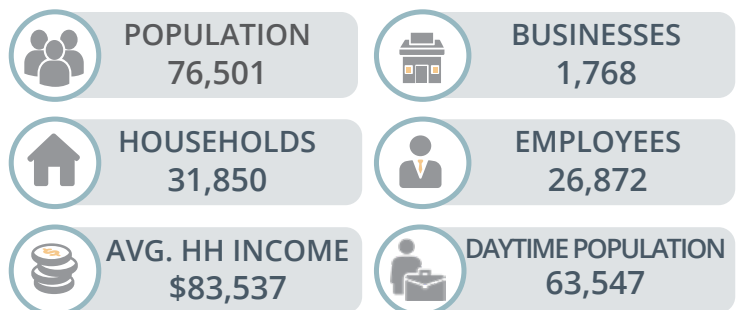
LEASE PRICE: \$15.50 PSF

ABOUT PROPERTY

- Conveniently located on McManus Blvd. across from Mary Immaculate Hospital in close proximity to the Jefferson Ave. / Denbigh Blvd. intersection
- Functional modern layout built out for a dentistry/or orthodontics practice
- 4-minute drive from the NN/Williamsburg International Airport
- Excellent signage
- Ample and convenient parking
- Rental rate of \$15.50 per square foot net of janitorial and utilities

- Zoned 01: Permitted uses include medical & dental, veterinary, school, professional office, computer sales & service, outpatient care clinic, optician, physical therapy, day care

DEMOGRAPHICS WITHIN 3 MILES



For more information:

CLARK BALDWIN, CCIM

757.640.9290

ClarkBaldwin@HarveyLindsay.com

MICHAEL ALLEN, CCIM

CALL OR TEXT 757.952.6660

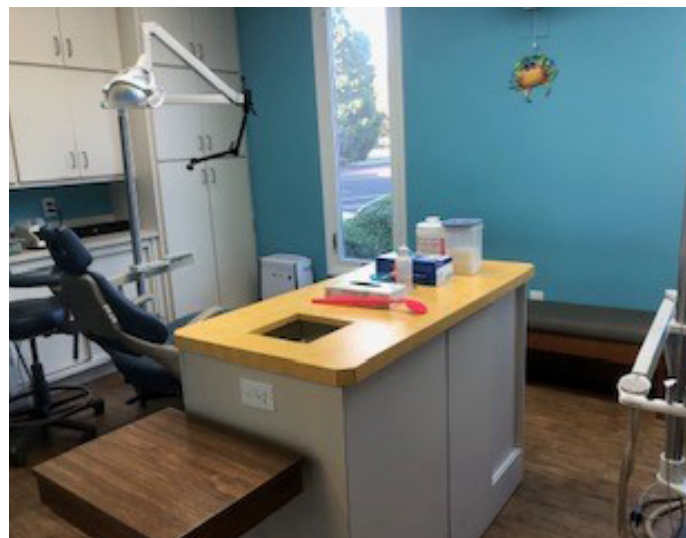
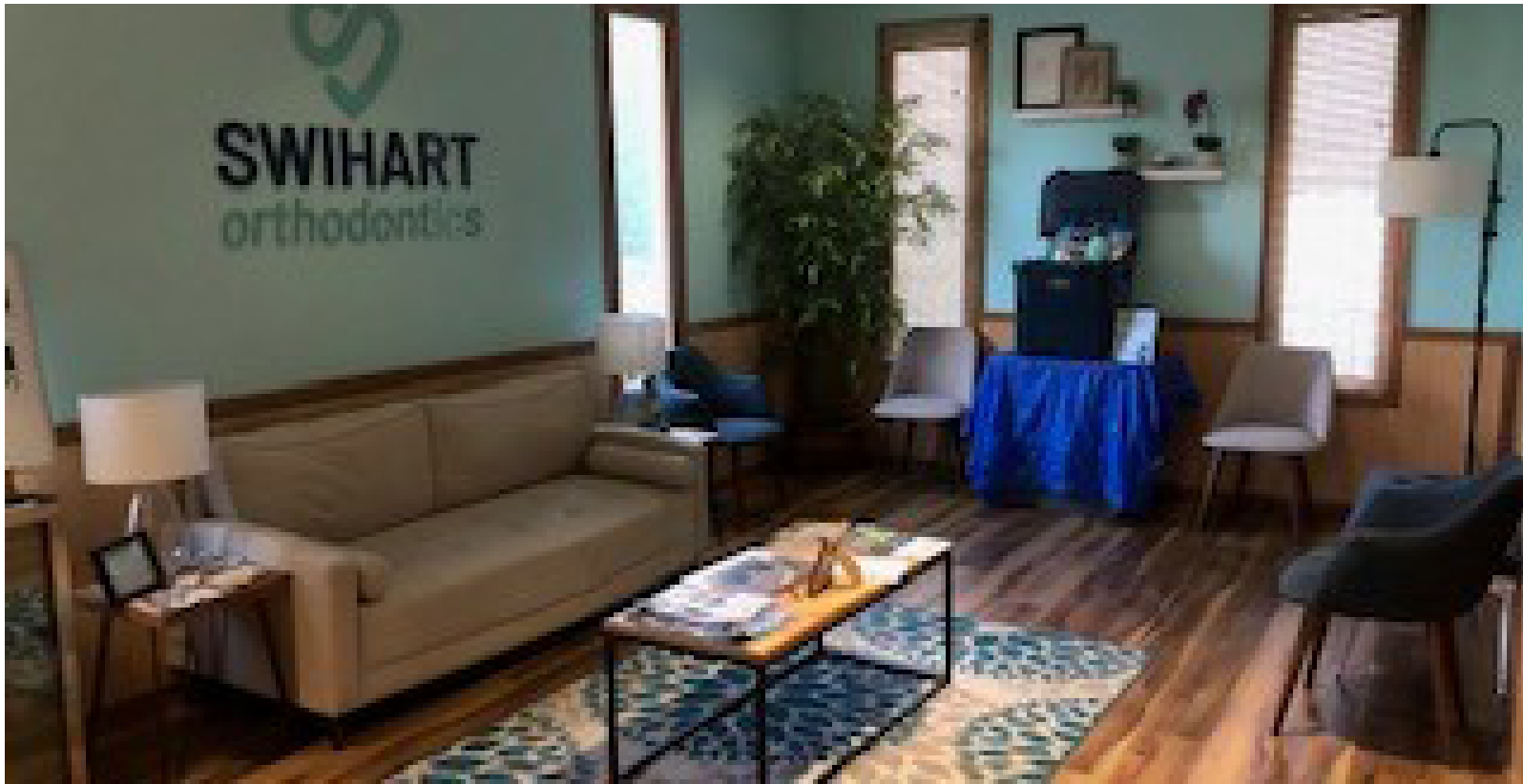
MichaelAllen@HarveyLindsay.com

HARVEY LINDSAY

COMMERCIAL REAL ESTATE

www.harveylindsay.com

INTERIOR IMAGES | 12725 McManus Boulevard, Unit 1A



The information contained herein has been obtained from sources believed to be reliable but is not warranted. We cannot be responsible for errors, omissions, withdrawal, or prior lease or sale.

HARVEY LINDSAY
COMMERCIAL REAL ESTATE

PROPERTY DETAILS | Key Facts Within 5 miles

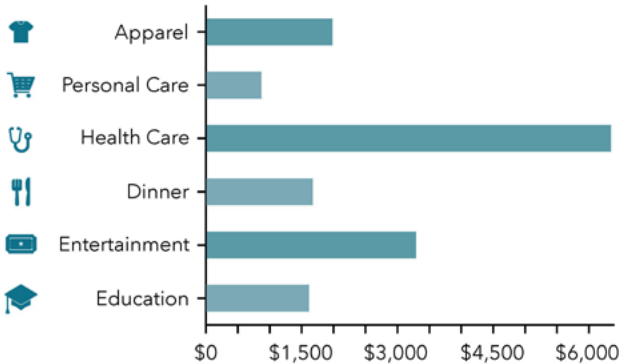
12725 McManus Boulevard, Newport News, Virginia, 23602
Ring of 5 miles



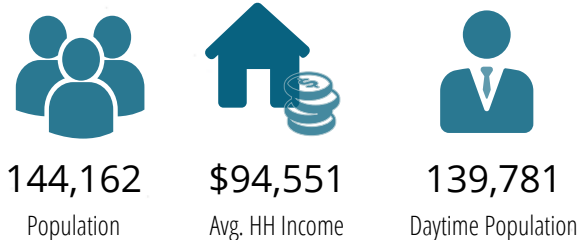
SITE DETAILS

Building Area SF:	4,086 SF
Site Area:	0.51 AC
Parking:	5.19/1,000 SF
Year Built:	1989
Opportunity Zone:	Yes

ANNUAL SPENDING PER HOUSEHOLD



KEY DEMOGRAPHIC FACTS



Source: Esri-U.S. BLS, Esri, Esri-Data Axle. Esri forecasts for 2023, 2028.
© 2023 Esri



SITE IDENTIFICATION & LOCAL USERS | Colony Square of Denbigh



For more information:

CLARK BALDWIN, CCIM

757.640.9290

ClarkBaldwin@HarveyLindsay.com

MICHAEL ALLEN, CCIM

CALL OR TEXT 757.952.6660

MichaelAllen@HarveyLindsay.com

825 Diligence Drive • Suite 114

Newport News, Virginia 23606

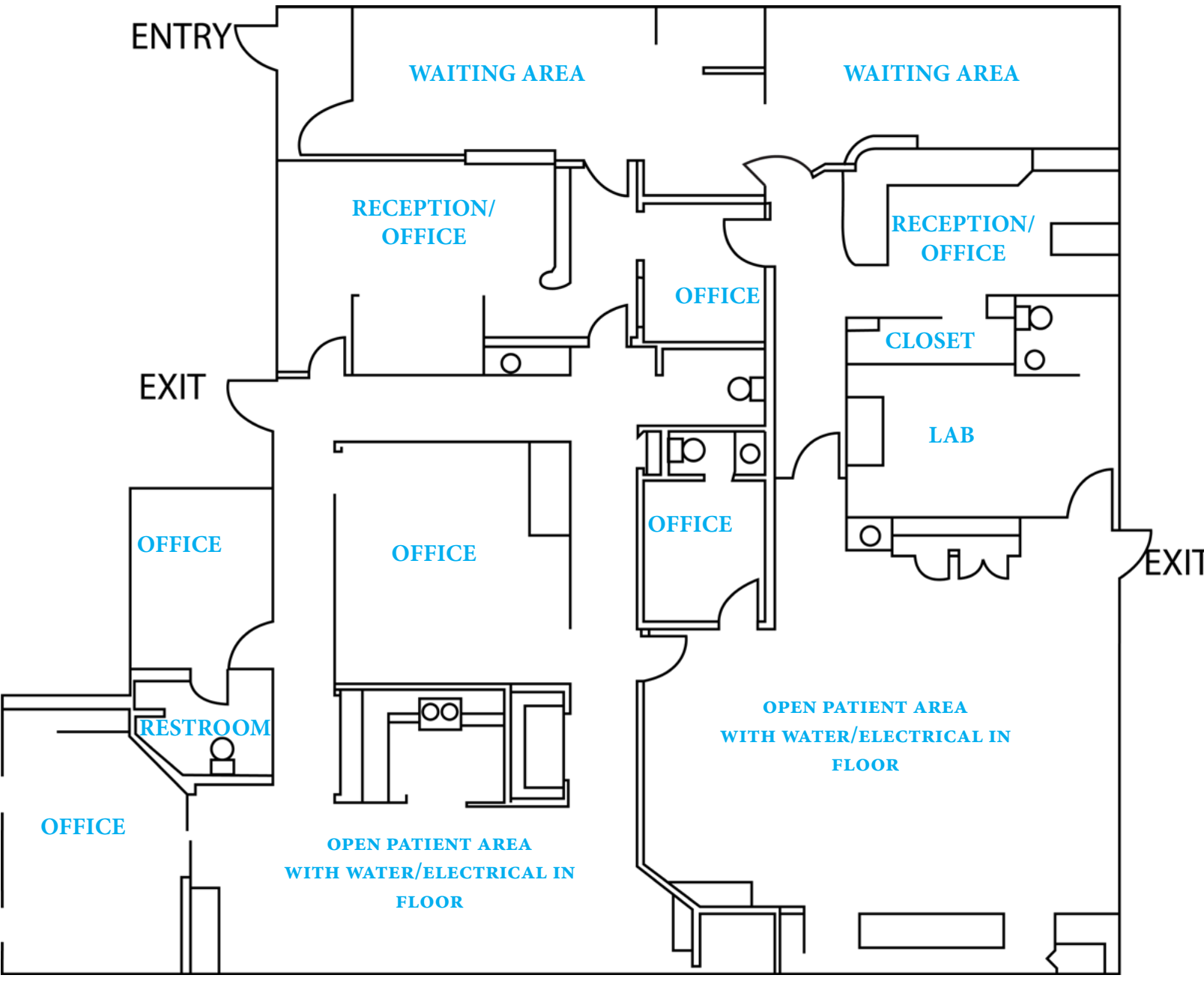
757-873-2020

www.HarveyLindsay.com

HARVEY LINDSAY

COMMERCIAL REAL ESTATE

EXISTING FLOOR PLAN - 4,086 SF | 12725 McManus Boulevard, Unit 1A



The information contained herein has been obtained from sources believed to be reliable but is not warranted. We cannot be responsible for errors, omissions, withdrawal, or prior lease or sale.