

# PARAMOUNT LAUNDRY



3960 Ince Blvd

Rendering

## MADE FOR MAKERS

Located in Culver City's renowned Hayden Tract community, Paramount Laundry offers a workspace for creative minds, enriched by its history as a 1940s Paramount Studios building. This space features high ceilings, concrete floors and expansive open areas that light the way for storytelling and out-of-the-box thinking.

Tenants have access to a private outdoor patio and on-site parking and sit just steps from premier dining and retail options. Surrounded by industry leaders like Amazon Studios and Apple, Paramount Laundry places tenants in a vibrant, inspiring environment that fuels bold ideas.



Rendering

AVAILABLE NOW: 25,336 RSF



Rendering



Rendering



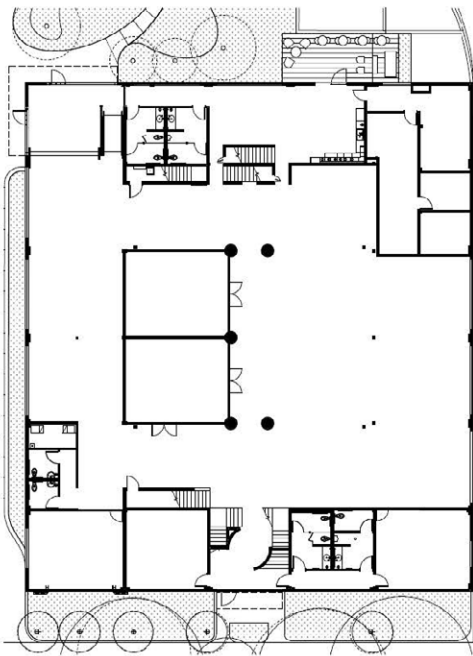
Rendering

# ROOM TO CREATE

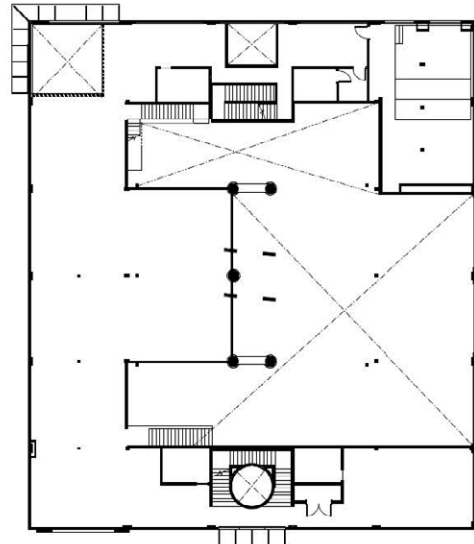
With spacious floor plans, original wood trusses and a mix of open and private spaces, Paramount Laundry's historic charm inspires creative professionals to bring bold new ideas to life.

**AVAILABLE NOW: 25,336 SF**

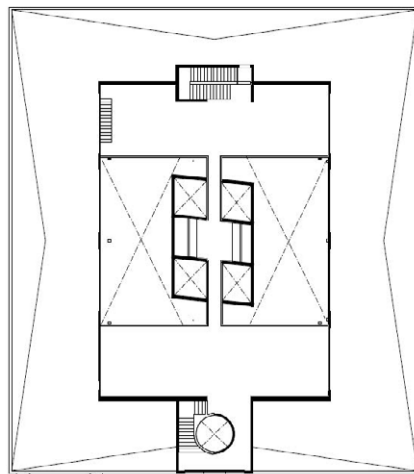
## GROUND FLOOR



## SECOND FLOOR



## THIRD FLOOR (MEZZ)



# THE FOREFRONT OF LA'S CREATIVE SCENE



Paramount Laundry empowers you to thrive in the creative epicenter of Westside LA, surrounded by industry leaders like Amazon, UCLA, and Apple. This dynamic location offers a hub of inspiration, providing endless opportunities to connect and collaborate with top minds in tech, media, and entertainment.



BALLONA CREEK BIKE PATH

METRO EXPO LINE

PARKING RATIO: 2:1,000 RSF

\$200 PER SPACE

# CONVENIENCE THAT WORKS FOR YOU



Rendering

Paramount Laundry is surrounded by a rich mix of everyday conveniences and lifestyle amenities. From dining and retail to entertainment, fitness, and essential services, everything your team or tenants need is just minutes away.



# YOUR LINK TO THE CITY



With easy access to I-405 and I-10, Paramount Laundry puts you minutes from West Los Angeles, Santa Monica, and Century City, streamlining your daily commute. The nearby Ballona Creek Bike Path, a favorite among walkers, runners, and bikers, offers a scenic route straight to Santa Monica Bay, connecting you to the best of the Westside.



For More Information, Please Contact:

## GABRIEL BROWN

+1 310 435 4344  
gabe.brown@jll.com  
CA Lic. 01441920

## JOSH BERNSTEIN

+1 310 795 5947  
josh.bernstein@cushwake.com  
CA Lic. 01828093

## ALEXA DELAHOKE

+1 626 340 5391  
alexa.delahooke@cushwake.com  
CA Lic. 02091695

©2026 Cushman & Wakefield. All rights reserved. The information contained in this communication is strictly confidential. This information has been obtained from sources believed to be reliable but has not been verified. NO WARRANTY OR REPRESENTATION, EXPRESS OR IMPLIED, IS MADE AS TO THE CONDITION OF THE PROPERTY (OR PROPERTIES) REFERENCED HEREIN OR AS TO THE ACCURACY OR COMPLETENESS OF THE INFORMATION CONTAINED HEREIN, AND SAME IS SUBMITTED SUBJECT TO ERRORS, OMISSIONS, CHANGE OF PRICE, RENTAL OR OTHER CONDITIONS, WITHDRAWAL WITHOUT NOTICE, AND TO ANY SPECIAL LISTING CONDITIONS IMPOSED BY THE PROPERTY OWNER(S). ANY PROJECTIONS, OPINIONS OR ESTIMATES ARE SUBJECT TO UNCERTAINTY AND DO NOT SIGNIFY CURRENT OR FUTURE PROPERTY PERFORMANCE. COE-PM-West-04.20.2026

