

**CBRE**

**12,151 SF**

**High-End  
Plug & Play  
Sublease**

12,151 SF FOR SUBLEASE

**500 Boylston Street**

**BOSTON, MA**



# The Opportunity

500 BOYLSTON STREET

## High-End

Plug & Play Sublease  
Furniture could be made available

## Centrally Located

Class A Building

## 12,151 SF

Available Now on  
the 11th Floor

## Professionally Managed Building

With 24/7 Security

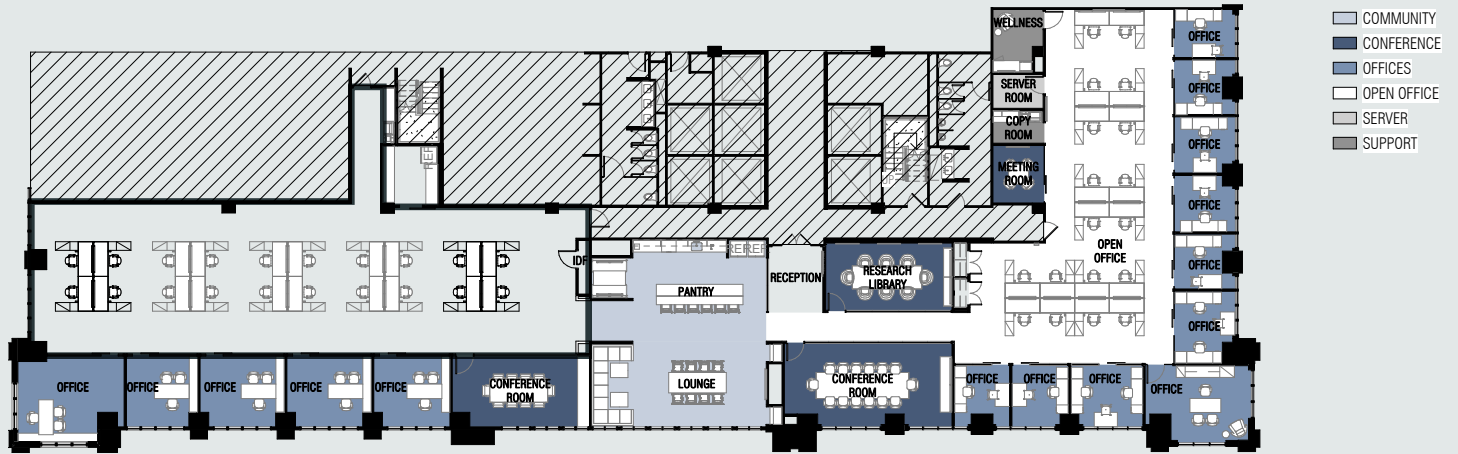
## Term

Through 3/31/2031

# 12,151 SF on the 11th Floor

FLOOR 11

12,151 SF





# Contacts

**Jeff Landers**  
 Senior Vice President  
 +1 857 205 1114  
 jeff.landern@cbre.com

**Ron Friedman**  
 Vice Chairman  
 +1 617 439 6723  
 ron.friedman3@cbre.com

**Charlie Jennings**  
 Vice President  
 +1 617 912 6865  
 charlie.jennings@cbre.com



© 2025 CBRE, Inc. All rights reserved. This information has been obtained from sources believed reliable but has not been verified for accuracy or completeness. CBRE, Inc. makes no guarantee, representation or warranty and accepts no responsibility or liability as to the accuracy, completeness, or reliability of the information contained herein. You should conduct a careful, independent investigation of the property and verify all information. Any reliance on this information is solely at your own risk. CBRE and the CBRE logo are service marks of CBRE, Inc. All other marks displayed on this document are the property of their respective owners, and the use of such marks does not imply any affiliation with or endorsement of CBRE. Photos herein are the property of their respective owners. Use of these images without the express written consent of the owner is prohibited.