

# 2151 O'Toole Avenue, San Jose

Suite 30

±4,654 SF

LBA Logistics 



**CBRE**

Will Schmidt  
Lic. 01988485  
+1 408 453 7408  
william.schmidt@cbre.com

Geoff Gonzalez  
Lic. 02038965  
+1 408 453 7413  
geoff.gonzalez@cbre.com

Mike Charters  
Lic. 01733612  
+1 408 453 7498  
mike.charters@cbre.com

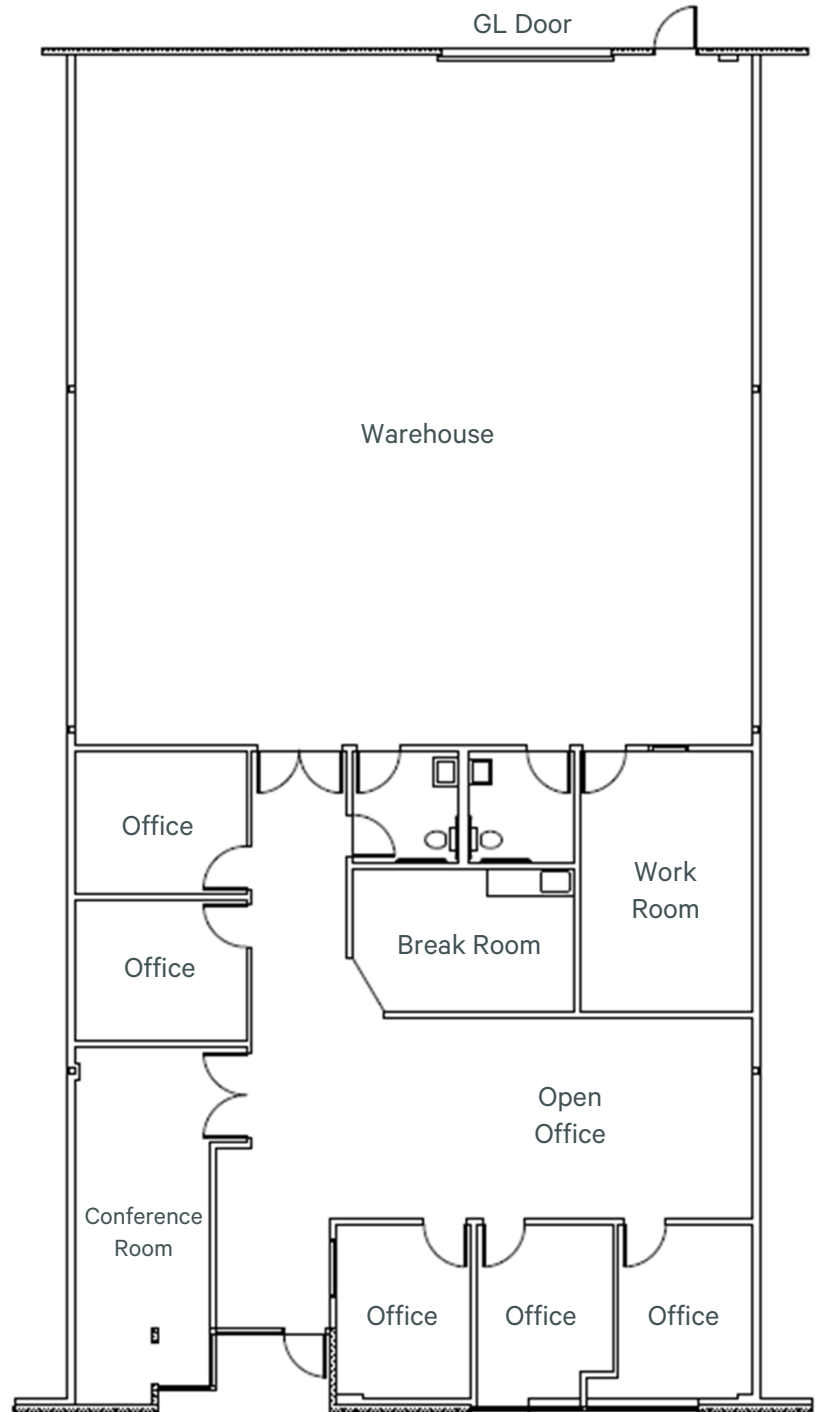
# 2151 O'Toole Avenue, San Jose

Suite 30

±4,654 SF

LBA Logistics 

- 50% Warehouse / 50% Office Suite
- Large Warehouse Area with Grade Level Door
- Five (5) Private Offices
- Conference Room
- Open Office Area
- Work Room / Lab
- Break Room
- Restrooms
- Available 8/1/2025



Will Schmidt  
Lic. 01988485  
+1 408 453 7408  
william.schmidt@cbre.com

Geoff Gonzalez  
Lic. 02038965  
+1 408 453 7413  
geoff.gonzalez@cbre.com

Mike Charters  
Lic. 01733612  
+1 408 453 7498  
mike.charters@cbre.com