



**MEDICAL ASSET  
MANAGEMENT**  
MEDICAL PROPERTY SPECIALISTS



Sherman Oaks Medical Arts Center | 4910 Van Nuys Blvd. | Sherman Oaks, CA  
Medical Office Suites For Lease

Available Suites	Rentable SF	Rental Rates
<sup>1</sup> Suite 104	785 RSF	\$3.75 FSG
Suite 212	767 RSF	\$3.75 FSG

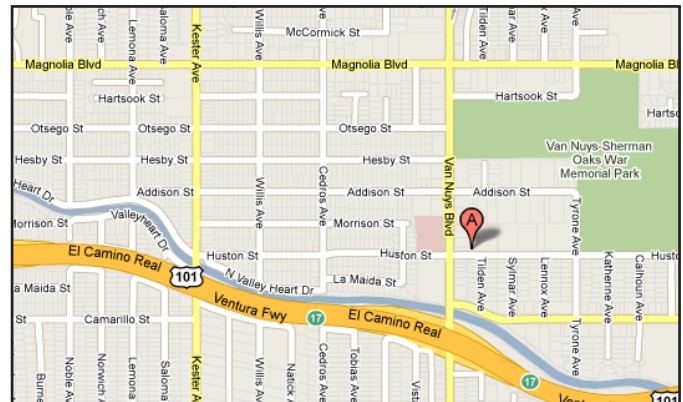
**Features**

- <sup>1</sup>Ground Floor Location
- Convenient to the 101 and 405 Freeways
- Located On-Campus of Sherman Oaks Hospital
- New Upgraded Digitally Controlled HVAC System
- New Upgraded Elevator Systems & Control
- Surgery Center & Imaging Center On-Site

**Parking**

- 5/1,000 covered
- \$95 per month/reserved
- \$75 per month/unreserved

**Term** 5 - 10 Years



**Contact**

**Brock Burnett**  
(818) 990-5200  
brockb@medicalasset.com  
DRE#: 01814211

**Mitch Yankowitz**  
(310) 517-4861  
mitchy@medicalasset.com  
DRE#: 01360137

[www.medicalasset.com](http://www.medicalasset.com)  
(310) 530-6060

**South Bay**  
201 Continental Blvd., Ste. 210  
El Segundo, CA 90245

**Downtown Los Angeles**  
1400 S. Grand Ave., Ste. 808  
Los Angeles, CA 90015

**San Fernando Valley**  
5411 Eriwanda Ave., Ste. 208  
Tarzana, CA 91356

**Long Beach**  
1040 Elm Ave., Ste. 308  
Long Beach, CA 90813

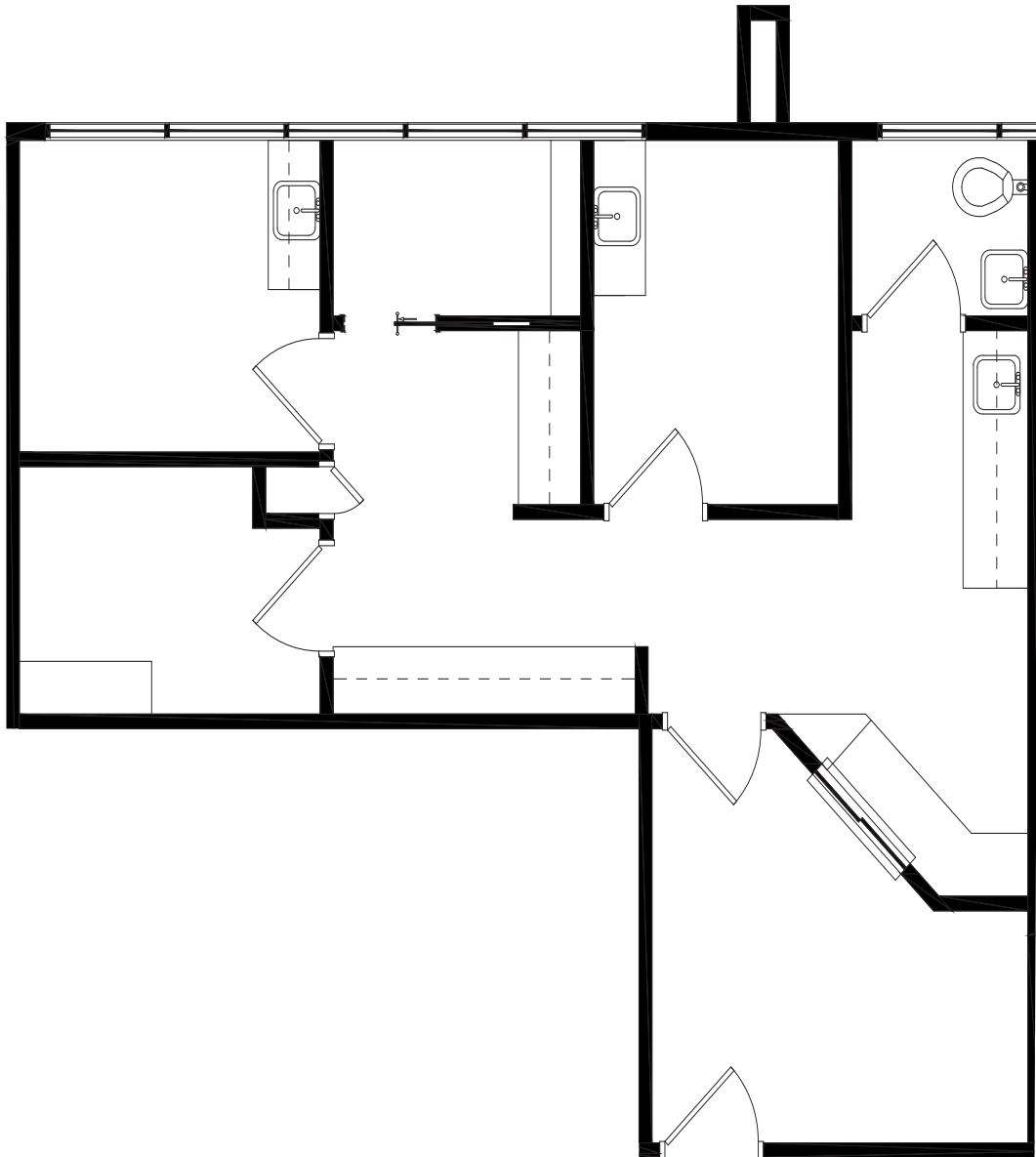


**MEDICAL ASSET  
MANAGEMENT**  
MEDICAL PROPERTY SPECIALISTS

Sherman Oaks Medical Arts Center | 4910 Van Nuys Blvd. | Floor Plans

**Suite 104**

**785 sq. ft.**



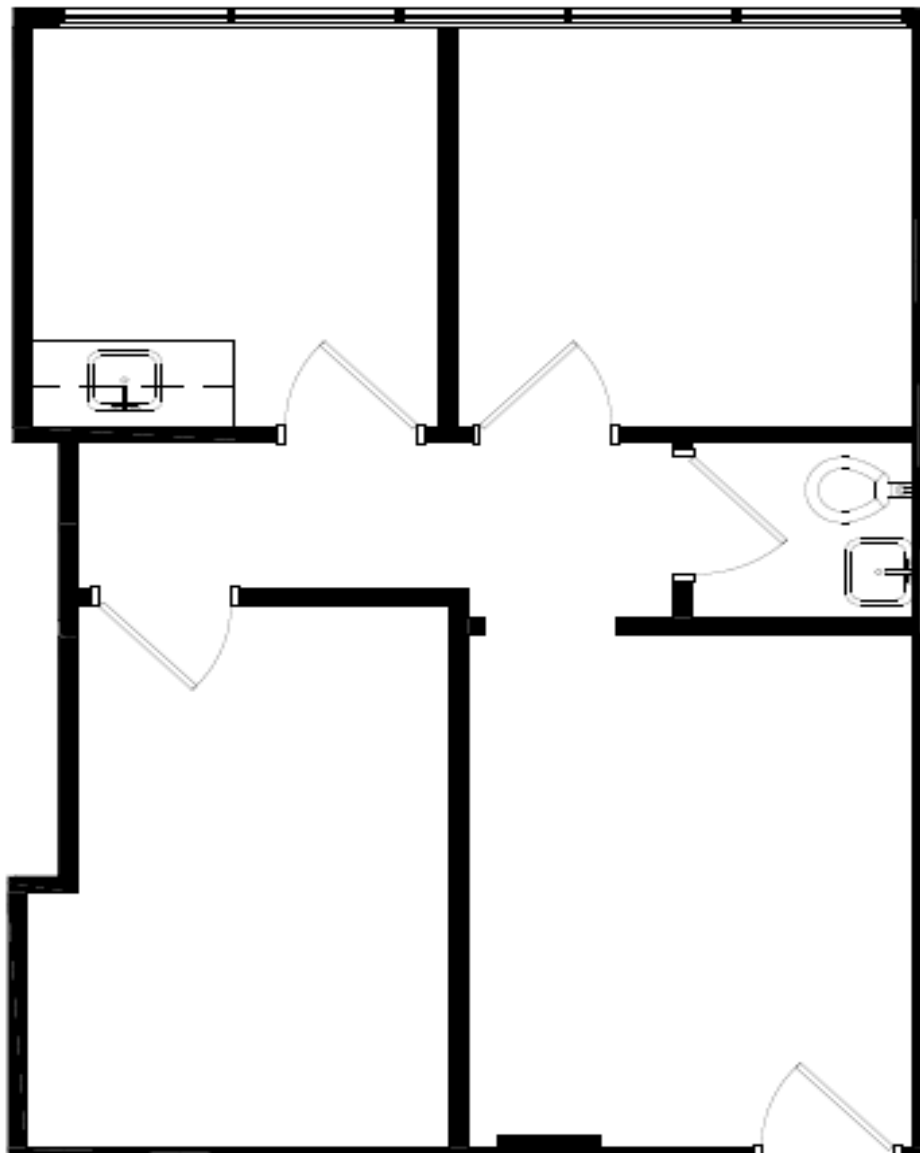
The information contained herein is deemed reliable, but cannot be guaranteed by Medical Asset Management and is subject to change.



**MEDICAL ASSET  
MANAGEMENT**  
MEDICAL PROPERTY SPECIALISTS

Sherman Oaks Medical Arts Center | 4910 Van Nuys Blvd. | Floor Plans

**Suite 212      767 sq. ft.**



The information contained herein is deemed reliable, but cannot be guaranteed by Medical Asset Management and is subject to change.