

---

FOR LEASE



# THE STOCKDALE TOWERS

---

5080 CALIFORNIA AVENUE  
BAKERSFIELD, CA 93309



# Property Highlights

- Common areas offer rich oak paneling & trim; granite & marble flooring; chandeliers & plush carpeting.
- Full fitness center available to all tenants with flat screen tv's; weight machines; treadmills; stationary bikes; free weights; marble men's & woman's locker/shower areas with oak lockers.
- Basement level truck dock for shipping & receiving
- Improvements Dependent on Term and Rate
- Monument Signage Available and possible building signage
- Ground floor Covenant Coffee Shop
- Credit Union, Bank, and Beauty Salon on Ground Floor

## ASKING RENT

- \$1.85/RSF Modified Gross Excludes Utilities & Janitorial



GROUND FLOOR  
COVENANT  
COFFEE SHOP



ON-SITE FITNESS  
CENTER FOR  
TENANTS (FREE  
MEMBERSHIP  
AVAILABLE TO  
TENANTS AND  
EMPLOYEES)



GROUND FLOOR  
BANK & CREDIT  
UNION



4-LEVEL  
PARKING  
GARAGE  
LOCATED  
ADJACENT  
TO THE  
BUILDING FOR  
TENANTS USE



NICHE BEAUTY  
LOUNGE

CITY VIEW  
SALON

JOSIE WHEELER  
WAX STUDIO

DYE VIVID A CDB  
CONCIERGE  
SALON CONCEPT

THE STRAND



## 5080 CALIFORNIA AVENUE AVAILABLE SUITES

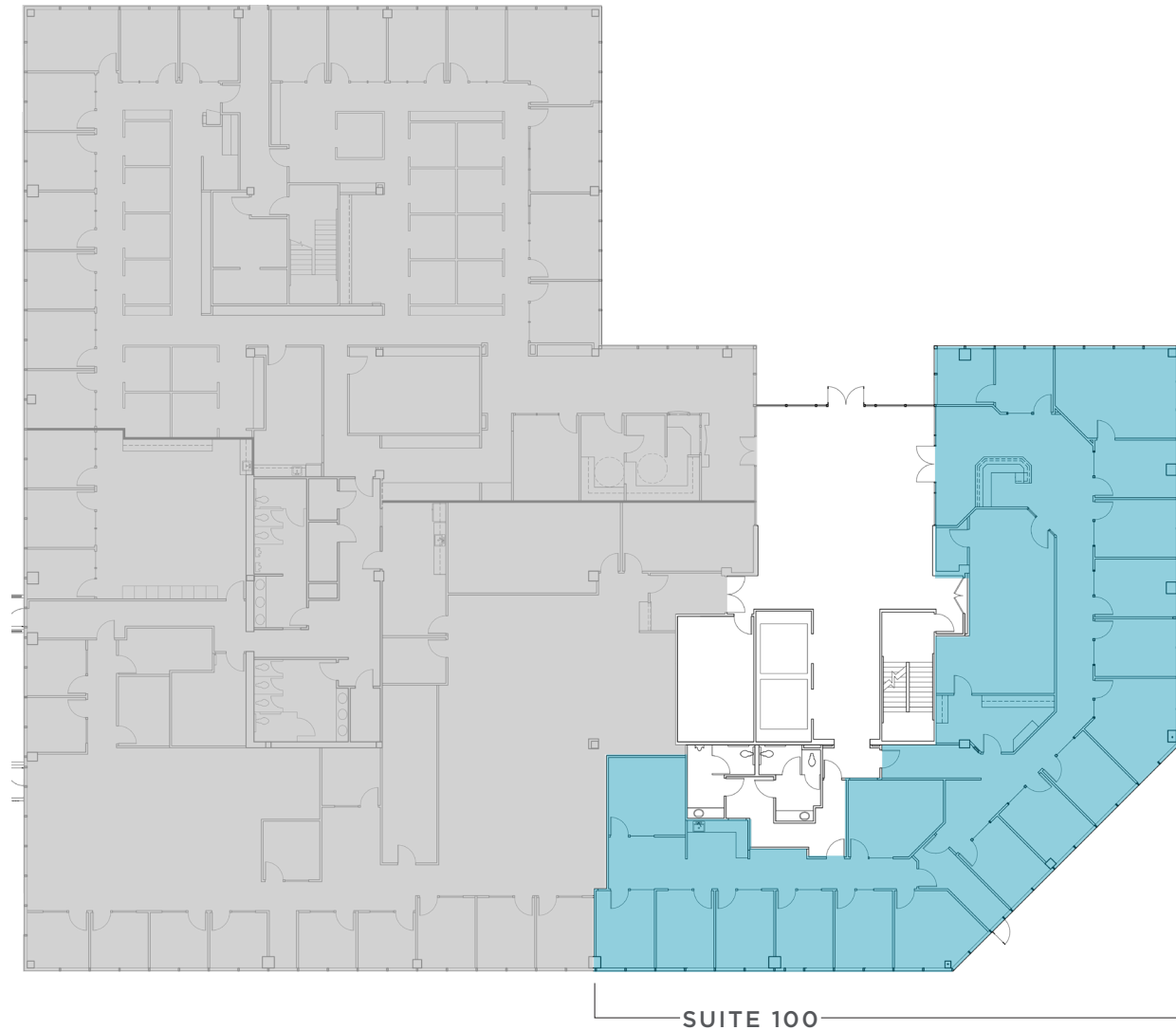
First Floor	Suite 100	±5,774 RSF
Second Floor	Suite 220	±7,116 RSF
Third Floor	Suite 340	±1,904 RSF
	Suite 360	±1,196 RSF
Fourth Floor	Suite 430	±3,830 RSF - divisible to ±1,042 RSF, ±1,491 RSF, and ±1,297 RSF
	Suite 460	±1,082 RSF



21,845 RSF

# 1st Floor

---



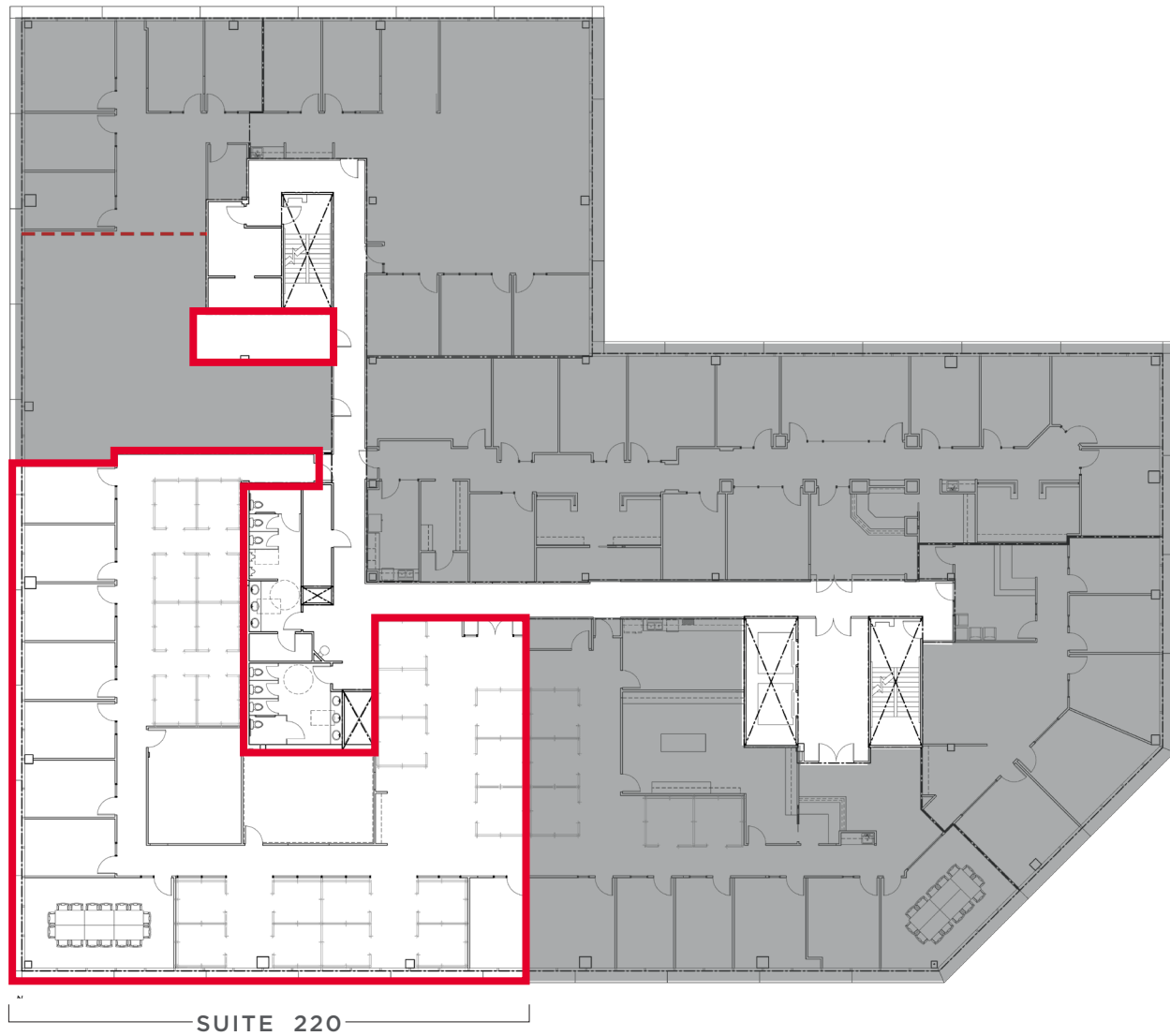
## 1ST FLOOR AVAILABLE SUITES:

- Suite 100 : ±5,774 RSF

21,845 RSF

# 2nd Floor

---

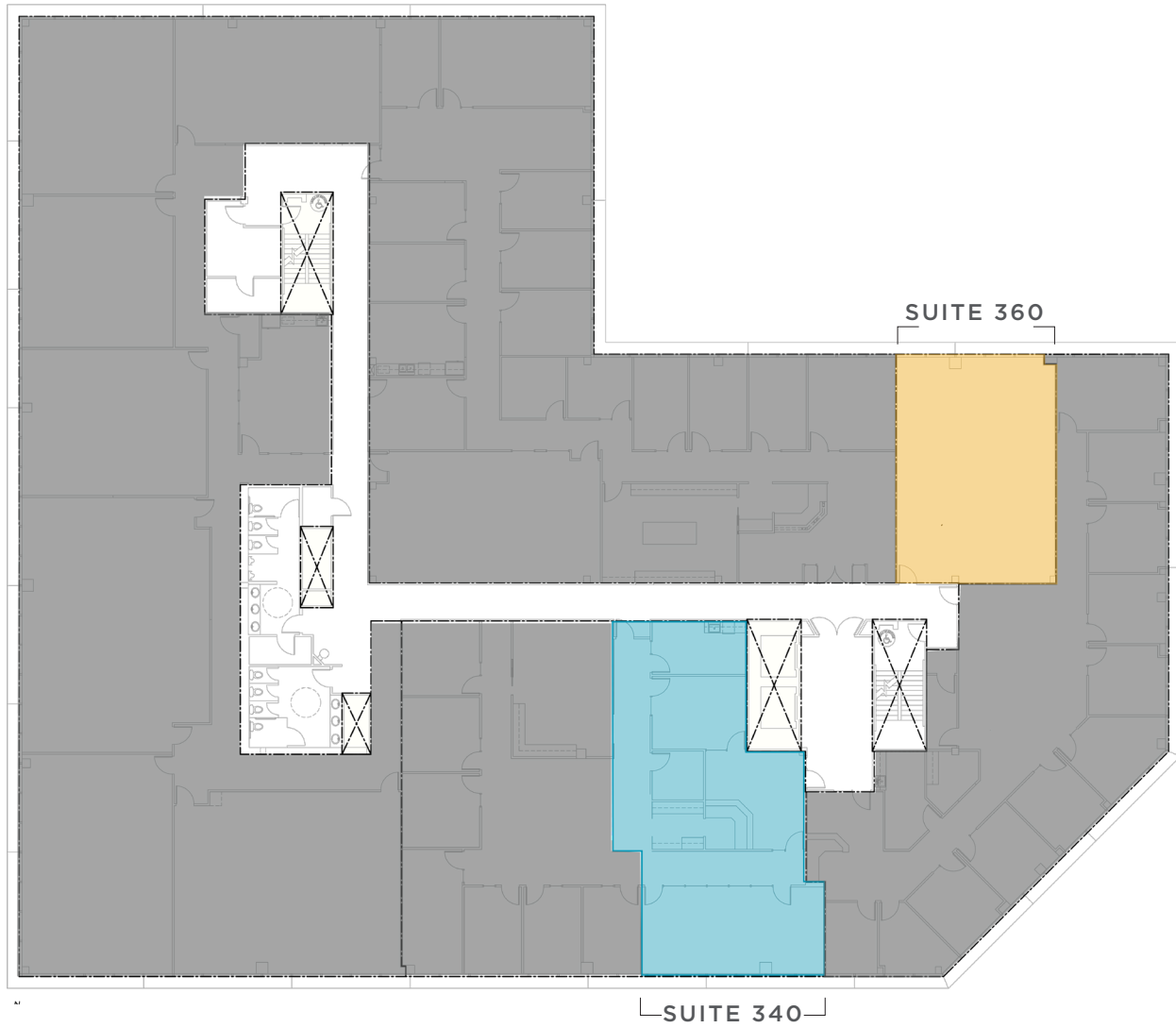


## 2ND FLOOR AVAILABLE SUITES:

- Suite 220: ±7,116 RSF

21,845 RSF

# 3rd Floor



## 3RD FLOOR AVAILABLE SUITES:

- Suite 340 : ±1,904 RSF
- Suite 360 : ±1,196 RSF



21,763 RSF

# 4th Floor



## 4TH FLOOR AVAILABLE SUITES:

- **Suite 430:** ±3,830 RSF  
Divisible to: ±1,042 RSF, ±1,491 RSF,  
and ±1,297 RSF
- **Suite 460:** ±1,082 RSF



## CONTACT INFORMATION

### SCOTT SALTERS

Senior Director

+1 661 204 6725

scott.salters@cushwake.com

### ALEX BALFOUR

Executive Director

+1 661 304 2521

alex.balfour@cushwake.com

### KRISTIN FRICKEL

Associate

+1 661 912 6005

kristin.frickel@cushwake.com



©2025 Cushman & Wakefield. All rights reserved. The information contained in this communication is strictly confidential. This information has been obtained from sources believed to be reliable but has not been verified. NO WARRANTY OR REPRESENTATION, EXPRESS OR IMPLIED, IS MADE AS TO THE CONDITION OF THE PROPERTY (OR PROPERTIES) REFERENCED HEREIN OR AS TO THE ACCURACY OR COMPLETENESS OF THE INFORMATION CONTAINED HEREIN, AND SAME IS SUBMITTED SUBJECT TO ERRORS, OMISSIONS, CHANGE OF PRICE, RENTAL OR OTHER CONDITIONS, WITHDRAWAL WITHOUT NOTICE, AND TO ANY SPECIAL LISTING CONDITIONS IMPOSED BY THE PROPERTY OWNER(S). ANY PROJECTIONS, OPINIONS OR ESTIMATES ARE SUBJECT TO UNCERTAINTY AND DO NOT SIGNIFY CURRENT OR FUTURE PROPERTY PERFORMANCE.