

**4350 East West Hwy | Bethesda, MD**



# Newly Renovated Space

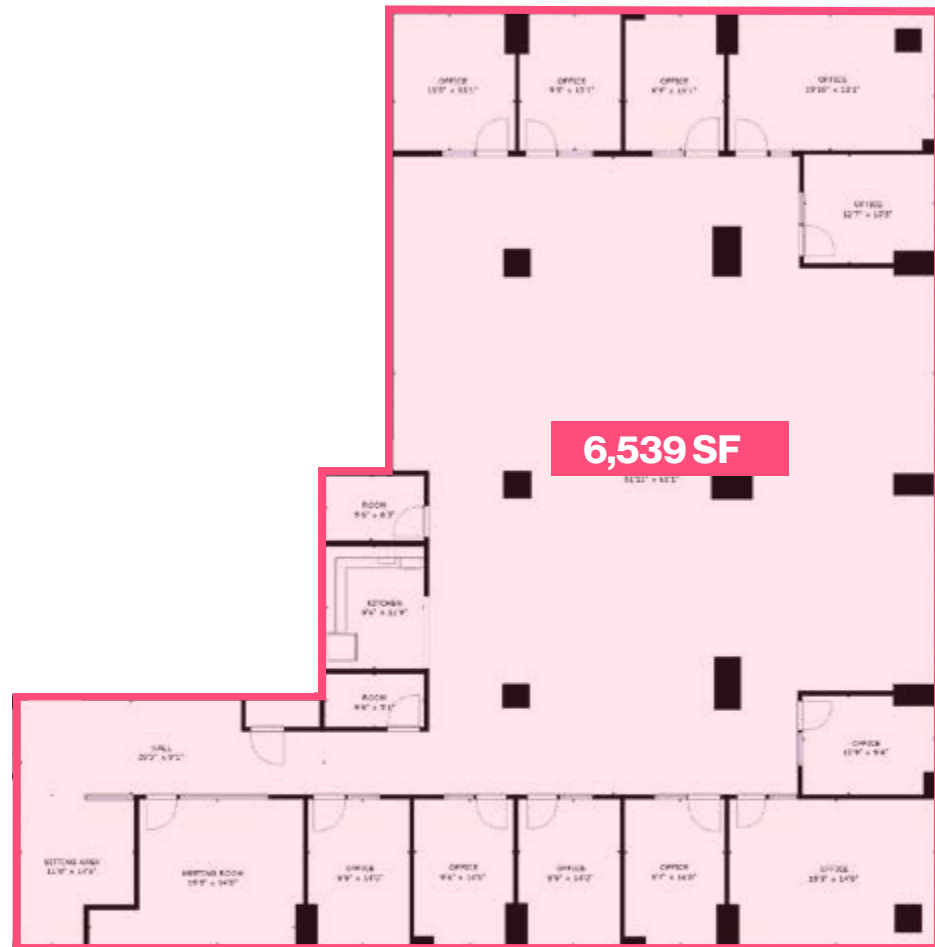
## Term Through November 2027

**TOP FLOOR**







**Suite 1150:** 6,539 RSF

**CBRE**

# Designed for Opportunity



Ready for You.  
Right Now.

-  2020 Build Out
-  11th Floor - 6,539 RSF
-  Polished Concrete Floor
-  2 blocks from Bethesda Metro Red Line and Future Purple Line
-  Spectacular Views
-  Furniture Options



# For more info please contact

**Niel Beggy**  
Senior Vice President  
+1301 215 4105  
neil.beggy@cbre.com

**Brian Mccarthy**  
Senior Vice President  
+1301 215 4121  
brian.mccarthy@cbre.com



4350 East West Hwy | Bethesda, MD