



**CROFTON BUSINESS PARK
1655 & 1657 CROFTON BLVD.
CROFTON, MD**

3,230 - 10,247 SF of Office/Medical Space Available



Mason Popham

mason.popham@thomas-park.com

www.thomas-park.com

240-539-3796



Garrett Epple

garrett.epple@thomas-park.com

www.thomas-park.com

240-539-3788



CROFTON BUSINESS PARK | 1655 & 1657 CROFTON BLVD. CROFTON, MD

3,230 - 10,247 SF of Office/Medical Space Available

Available Spaces

| Space | Size | Rental Rate | Space Use | Condition | Available |
|-----------------|-----------|----------------------|----------------|-----------------|-------------|
| 1655: Suite 102 | 3,230 SF | \$25 PSF + Utilities | Office/Medical | Fully Built Out | Immediately |
| 1657: Suite 103 | 3,560 SF | \$25 PSF + Utilities | Office/Medical | Shell Condition | Immediately |
| 1657: Suite 202 | 5,147 SF | \$25 PSF + Utilities | Office/Medical | Shell Condition | Immediately |
| 1657: Suite 300 | 10,247 SF | \$25 PSF + Utilities | Office/Medical | Shell Condition | Immediately |

CROFTON BUSINESS PARK 1655 & 1657 CROFTON BLVD. CROFTON, MD

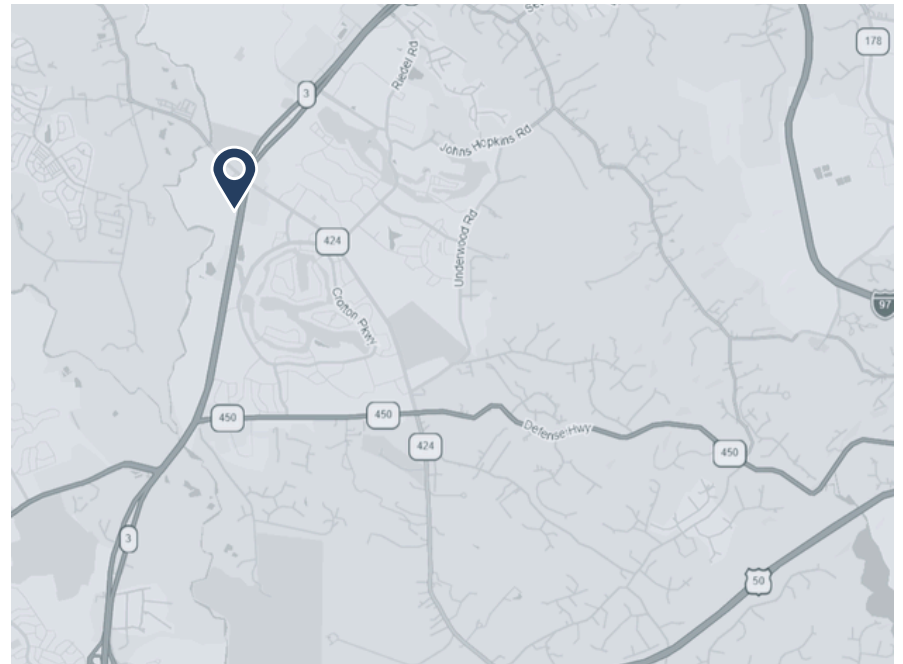
Property Facts

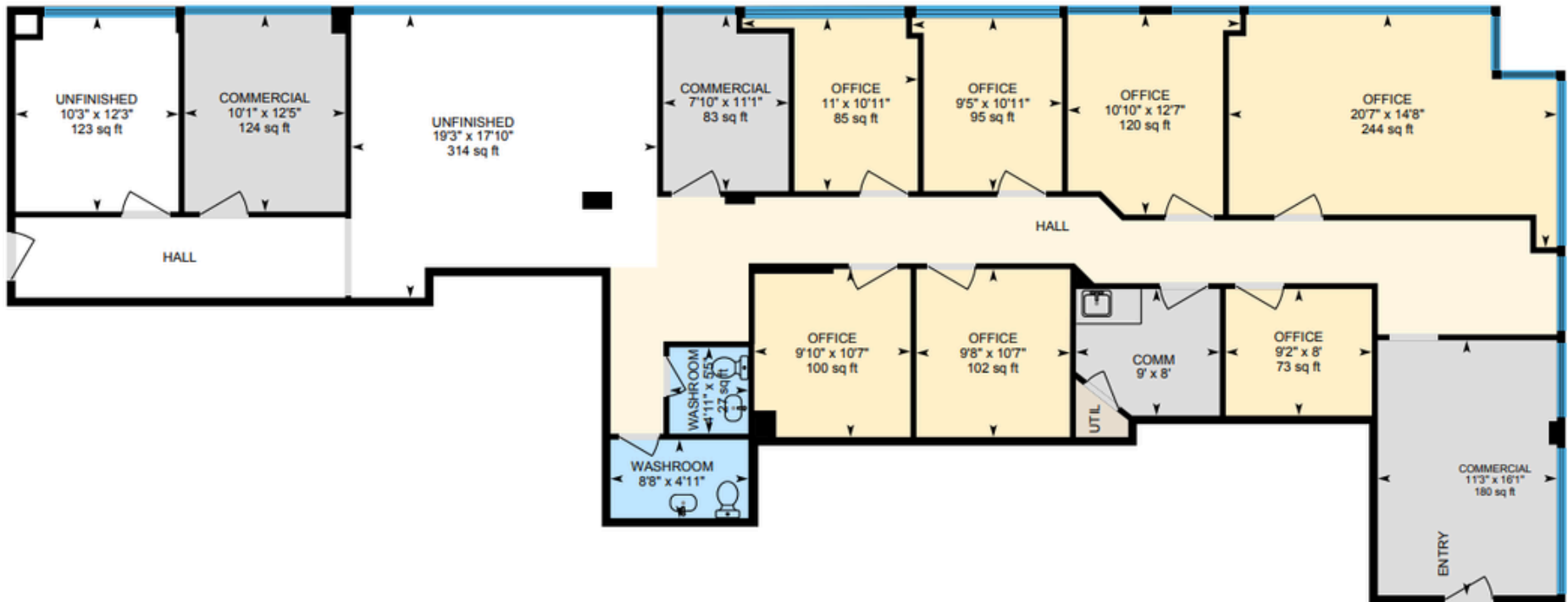
| | |
|------------------------|----------------------------|
| Building Type | Office/Medical |
| Building Height | 3 Stories |
| Building Size | 30,000 each / 60,000 total |
| Parking | 4.3 /1,000 SF |

Property Overview

Crofton Business Park is a well-located two-building office campus totaling approximately 60,000 square feet in the heart of Crofton's established commercial corridor. Situated directly on Crain Hwy, the property offers efficient floor plates, abundant surface parking, and flexible suite configurations suited for a range of office and service-oriented users.

The park benefits from excellent accessibility to Route 3, Route 50, and I-97, providing convenient connectivity to Annapolis, Baltimore, and Washington, D.C. Surrounded by strong residential density and nearby retail amenities, the location supports both employee convenience and client accessibility. Crofton Business Park presents an attractive opportunity for tenants seeking a professional setting within a highly accessible suburban office environment.



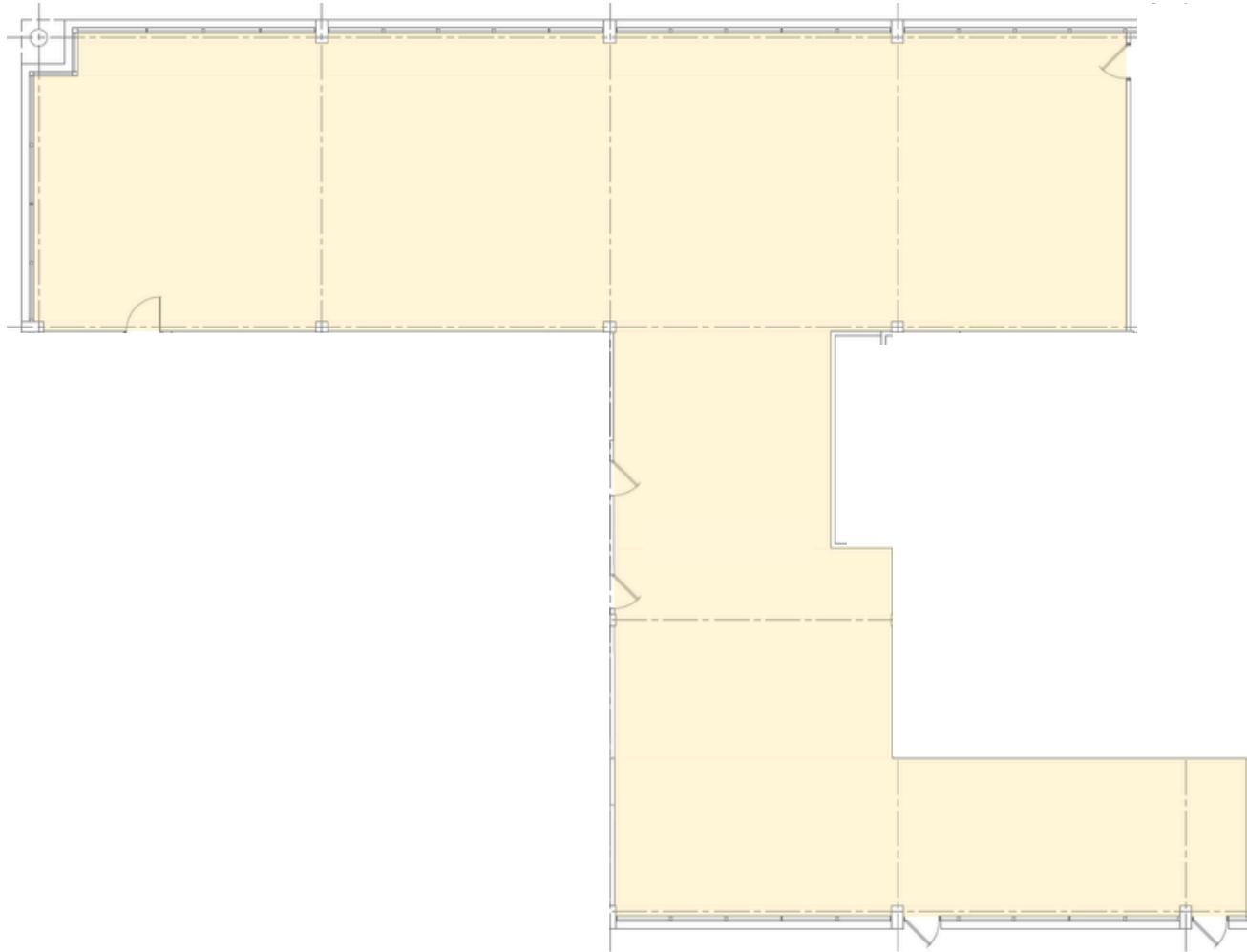


CROFTON BUSINESS PARK
1655 & 1657 CROFTON, MARYLAND

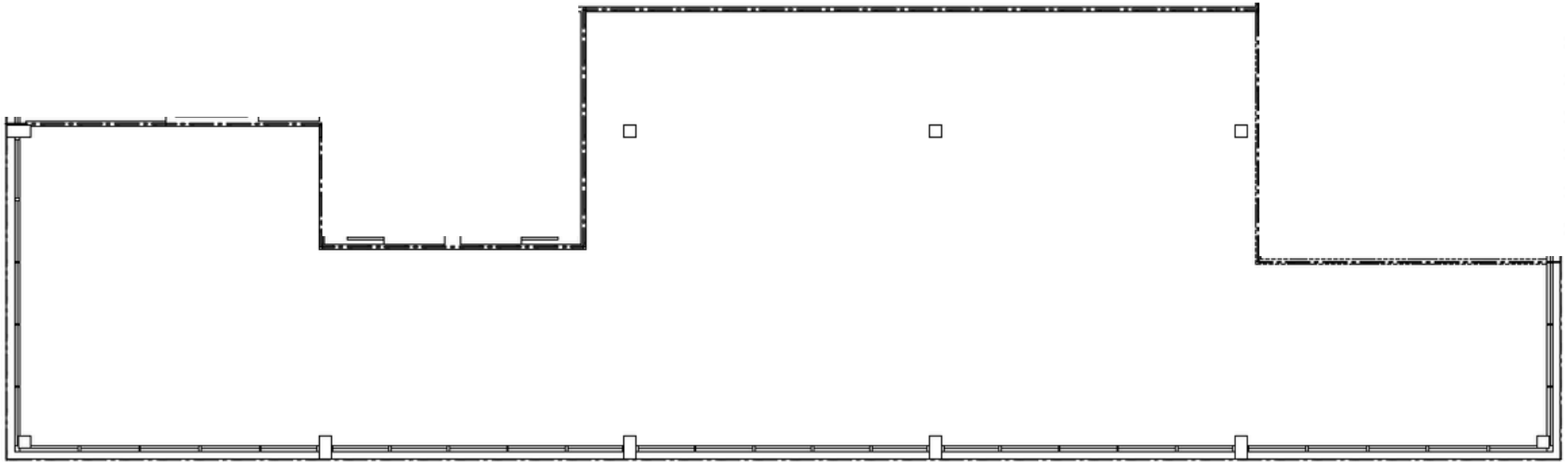
 360° Virtual Tours

[1655 Suite 102](#)

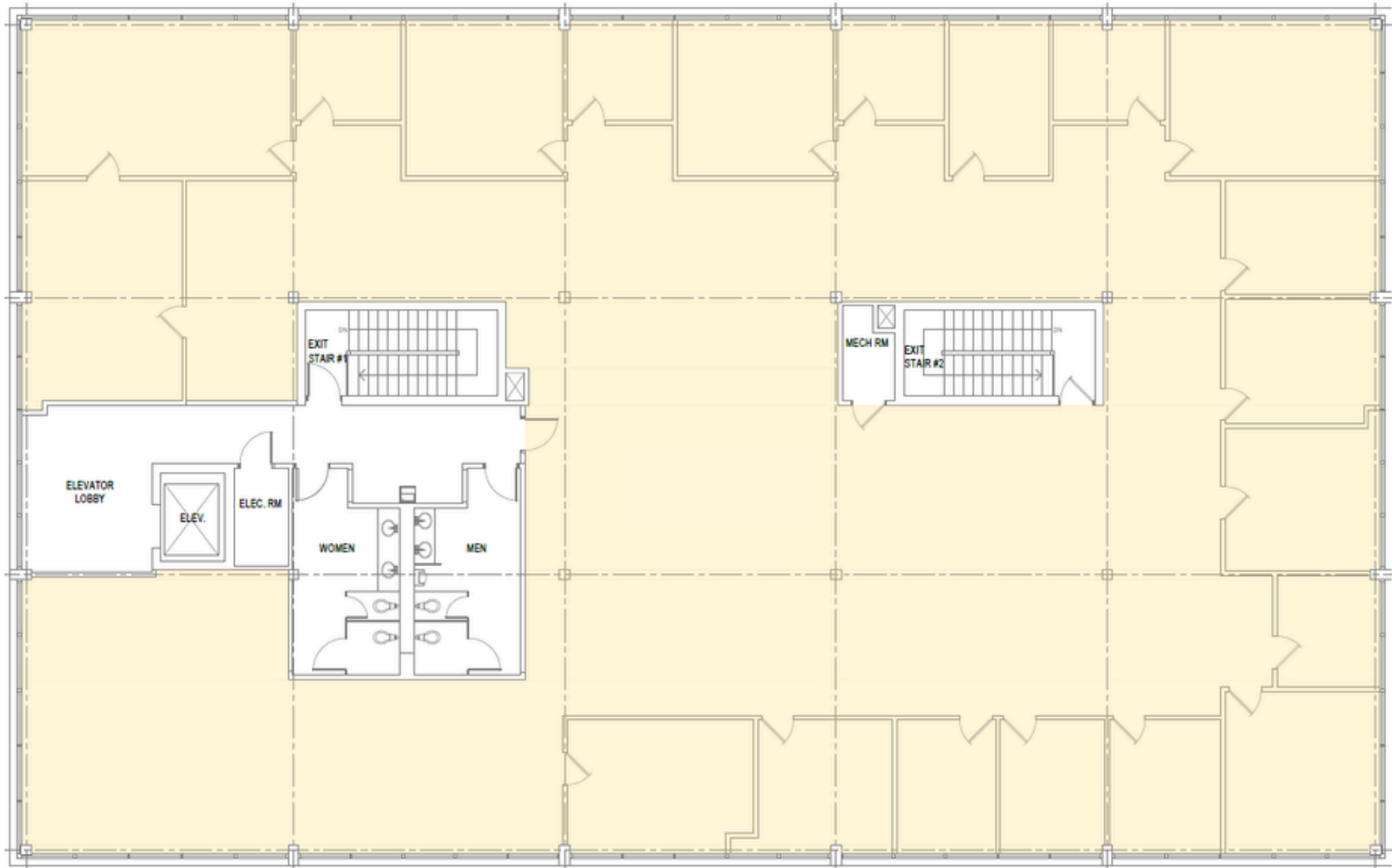




CROFTON BUSINESS PARK
1655 & 1657 CROFTON, MARYLAND



CROFTON BUSINESS PARK
1655 & 1657 CROFTON, MARYLAND



CROFTON BUSINESS PARK
1655 & 1657 CROFTON, MARYLAND



CROFTON BUSINESS PARK

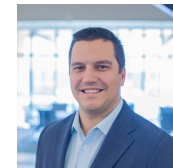
1655 & 1657 CROFTON BLVD.

3,230 - 10,247 SF of Office/Medical Space Available



Mason Popham

mason.popham@thomas-park.com
www.thomas-park.com
240-539-3796



Garrett Epple

garrett.epple@thomas-park.com
www.thomas-park.com
240-539-3788



YOUR COMMERCIAL REAL ESTATE PARTNER

Thomas Park is a full-service commercial real estate firm offering alternative investment strategies and third-party commercial real estate services.



MASON POPHAM

mason.popham@thomas-park.com
www.thomas-park.com
410-280-0220



GARRETT EPPLÉ

garrett.epple@thomas-park.com
www.thomas-park.com
240-539-3788



THOMAS PARK COMMERCIAL

Thomas Park Commercial specializes in leasing and investment brokerage across all commercial asset classes throughout Maryland.



THOMAS PARK INVESTMENTS

TPI is one of the fastest growing private equity real estate investment firms on the East Coast focused exclusively on healthcare real estate.



THOMAS PARK MANAGEMENT

TPM is a best in class property management firm with a 30+ year track record in the commercial real estate industry.



THOMAS PARK DESIGN

TPD is an innovative interior design firm specializing in healthcare, medical office, commercial office, and retail.



THOMAS PARK CONSTRUCTION

TPC focuses on commercial construction within the healthcare, retail, office and industrial sectors.