



# PINEWOOD COURT

TYTHERINGTON BUSINESS VILLAGE

# You will be in good company...

Consisting of nineteen individual buildings, the impressive business village offers a wide selection of retail, industrial and lab capable office space to meet your business requirements perfectly.

The unique nature of the business village means we can provide flexible office space from the beginning of your business journey and support you as your company grows into larger suites, whole floors and even into entire, self-contained buildings.

## HOME TO:

**Bodycote**

**Certus**  
CARD GROUP™

Alderley Analytical 

**SYGNATURE DISCOVERY** 

**Fourth**



# Office Specifications



24 Hour Access



Air-conditioned



8 Person Passenger Lift



On-site Shower



LED Lighting



On Site CCTV Provision

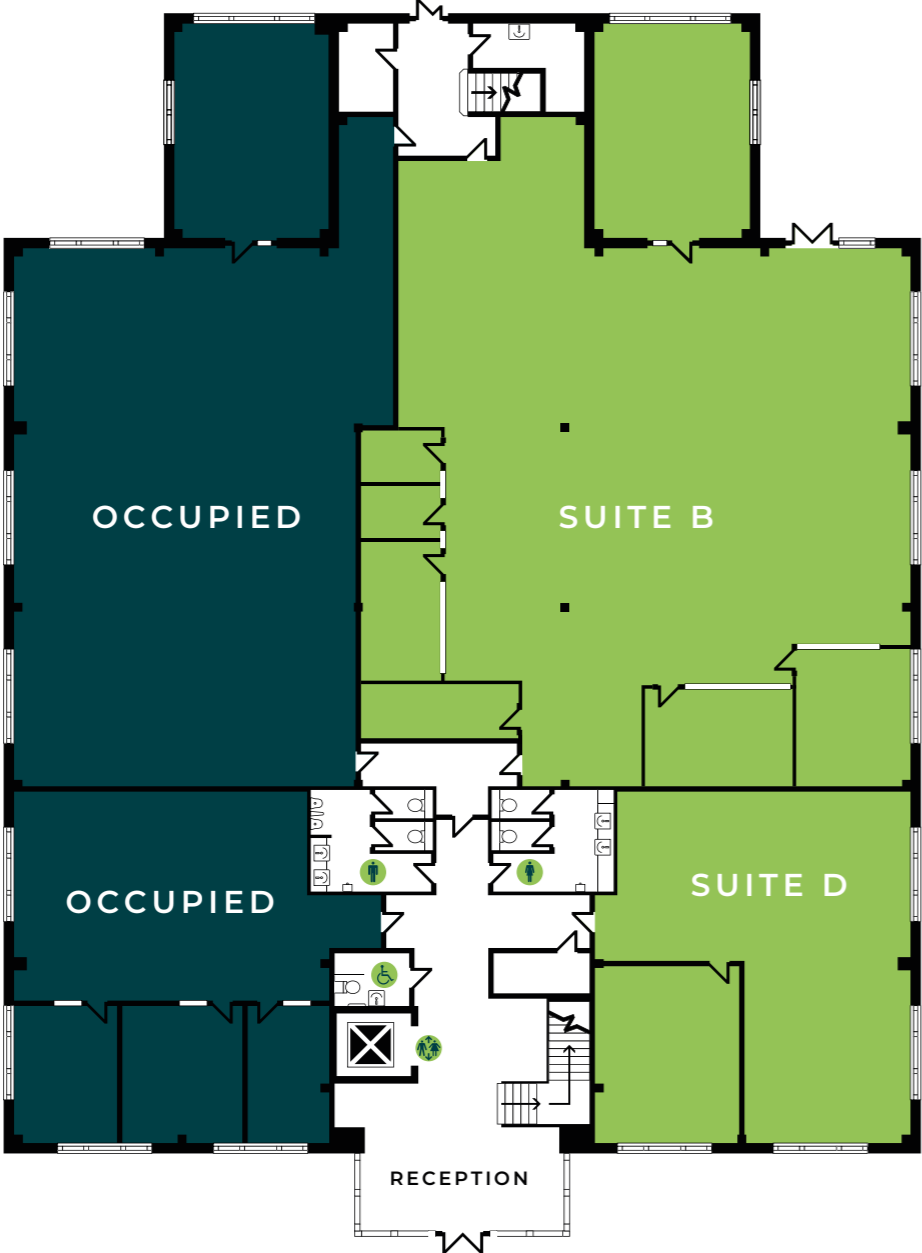


On-site Parking



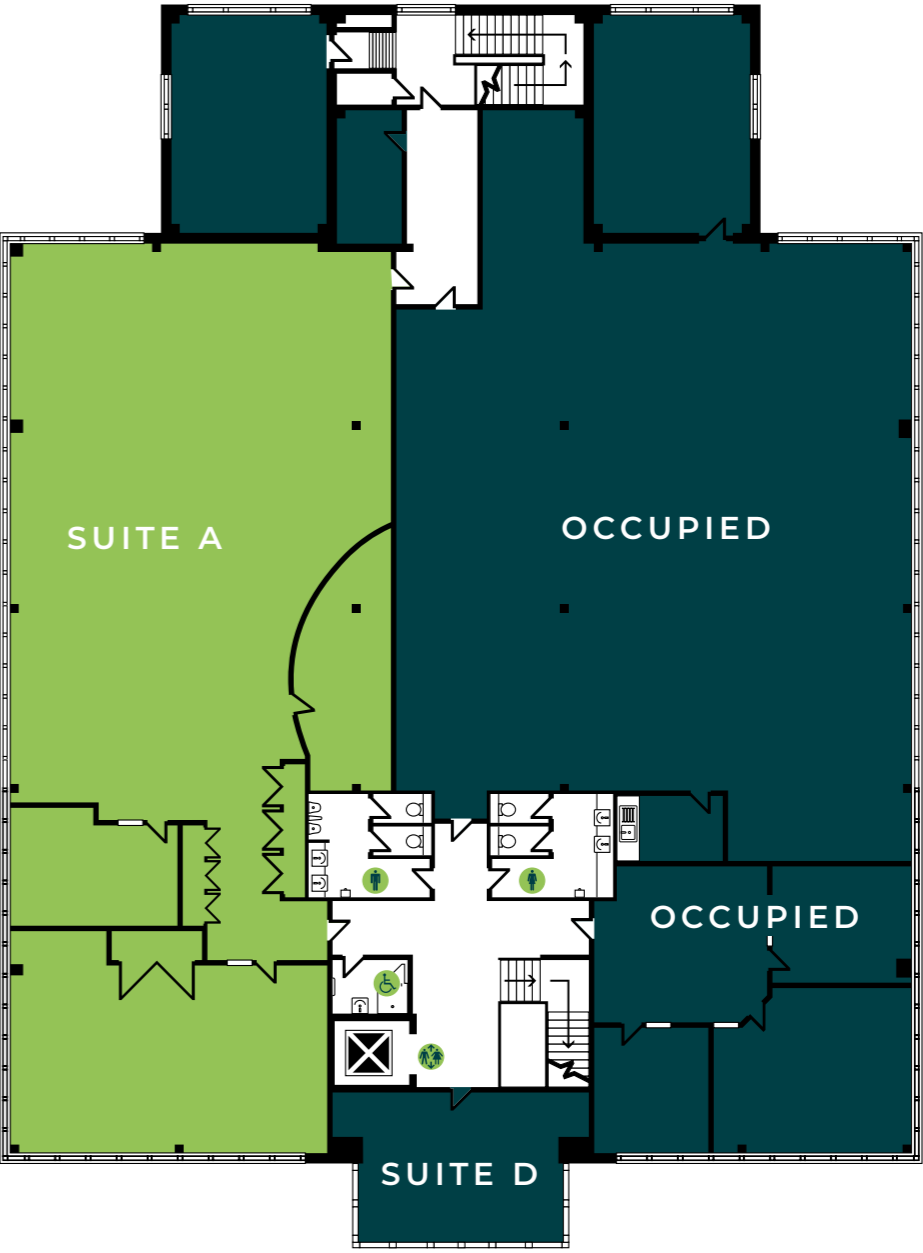
# FLOOR PLAN

Ground Floor



# FLOOR PLAN

First Floor



# Availability

GROUND	SUITE B	3,003 SQ.FT.	279 SQ.M.
GROUND	SUITE D	980 SQ.FT.	91 SQ.M.
FIRST	SUITE A	2,956 SQ.FT.	275 SQ.M.

Pinewood Court is a two-storey office at Tytherington Business Village, set in a secluded part of the scheme and benefiting from on-site parking on the doorstep of the property.

The well-presented property provides a range of suites which are available on all-inclusive packages and ideal for growing and start-up businesses looking for flexible workspace in Macclesfield and East Cheshire. The available suite benefits from an internal meeting room.

You'll be in good company at Tytherington Business Village as neighbouring properties to Pinewood Court are home to national brands Bioscript, Fourth and Alderley Analytical.



“ Life feels better when people have a strong connection with nature ”

The Middlewood Way is an 11-mile, traffic-free greenway, popular with walkers, cyclists, horse riders and nature lovers which runs from Macclesfield to Marple on the Peak Park fringe. It follows the line of the former Macclesfield, Bollington and Marple Railway with many options for easy circular walks.



Nature is encouraged here at Tytherington with bird boxes, bug hotels and wildflowers.



THE TYTHERINGTON  
BY THE CLUB COMPANY

Half a mile away is The Tytherington Club which features a 4-star hotel, spa, gym and 18-hole golf course.

# Business Village Benefits

[TYTHERINGTONBUSINESSVILLAGE.CO.UK](http://TYTHERINGTONBUSINESSVILLAGE.CO.UK)

WORK — CONNECT — DISCOVER

We're proud of the service we offer our customers and we love to go the extra mile. Here at Tytherington Business Village, our on-site events are a key part of building customer engagement. Throughout the year we run yoga and well-being classes, food trucks and networking events.



Secure Bike Storage



Regular Events



100% Renewable Electricity



Nursery



Landscaped Grounds & Walking Routes



Premier Inn hotel & Beefeater Pub



On-site Parking



Café & Outdoor Seating Area

TO MACCLESFIELD,  
STOKE-ON-TRENT & M6



TO STOCKPORT, M60,  
& MANCHESTER



THE SILK ROAD A523

BUS ROUTES 10 & 391

# PINEWOOD COURT



### TRAIN

Macclesfield's mainline train station benefits from frequent and direct Avanti Train services allowing you to arrive at London Euston station with ease in just under 2 hours or Manchester Piccadilly in less than 25 minutes.

### BUS

Services run on a frequent basis from Macclesfield town centre and train station to Tytherington Business Village for ultimate convenience.

### AIR

Manchester Airport provides over 200 direct flights to destinations across the world - ideal for global companies looking for a HQ in the North West.

### CYCLE

Employees and visitors alike can enjoy our onsite cycle hubs.

LOCATION	DISTANCE	TRAVEL TIME
Macclesfield	2 miles	3 minutes
A34	6.8 miles	12 minutes
Manchester Airport	10 miles	19 minutes
M56	10.7 miles	20 minutes
M60	11 miles	22 minutes
M6	16.5 miles	33 minutes
Manchester	17.7 miles	33 minutes



SPRINGWOOD WAY

TYTHERINGTON LANE

BALL LANE

DUMBALL LANE

REDWOOD COURT

SPRINGWOOD WAY

SPRINGWOOD WAY

SPRINGWOOD WAY

SPRINGWOOD WAY

SPRINGWOOD WAY

SPRINGWOOD WAY

SPRINGWOOD WAY

SPRINGWOOD WAY

SPRINGWOOD WAY

SPRINGWOOD WAY

SPRINGWOOD WAY

SPRINGWOOD WAY

SPRINGWOOD WAY

SPRINGWOOD WAY

SPRINGWOOD WAY

SPRINGWOOD WAY

SPRINGWOOD WAY

SPRINGWOOD WAY

SPRINGWOOD WAY

SPRINGWOOD WAY

SPRINGWOOD WAY

# PINEWOOD COURT

TYTHERINGTON BUSINESS VILLAGE

**Orbit** 01625 588200  
**Developments** orbit-developments.co.uk

Images are for illustrative purposes only and may not represent the exact office space available.

Developer reserves the right to change the scheme in the future. However, the Vendors / Lessors and Agents of intended as a general outline only, for the guidance of prospective purchasers or tenants, and do not constitute the whole or any part of an offer or contract. (2) They cannot guarantee the accuracy of any description, dimension or other details contained in these Particulars and prospective purchasers or tenants should not rely on them as statements of fact or representation, but must satisfy themselves as to the accuracy of such details. (3) No employee of the Agents has any authority to make or give any representation or warranty, or enter into any contract whatsoever in relation to the property (O326)