



## For Lease

Crownpointe V  
7320 Kingspointe Parkway  
Orlando, FL 32819

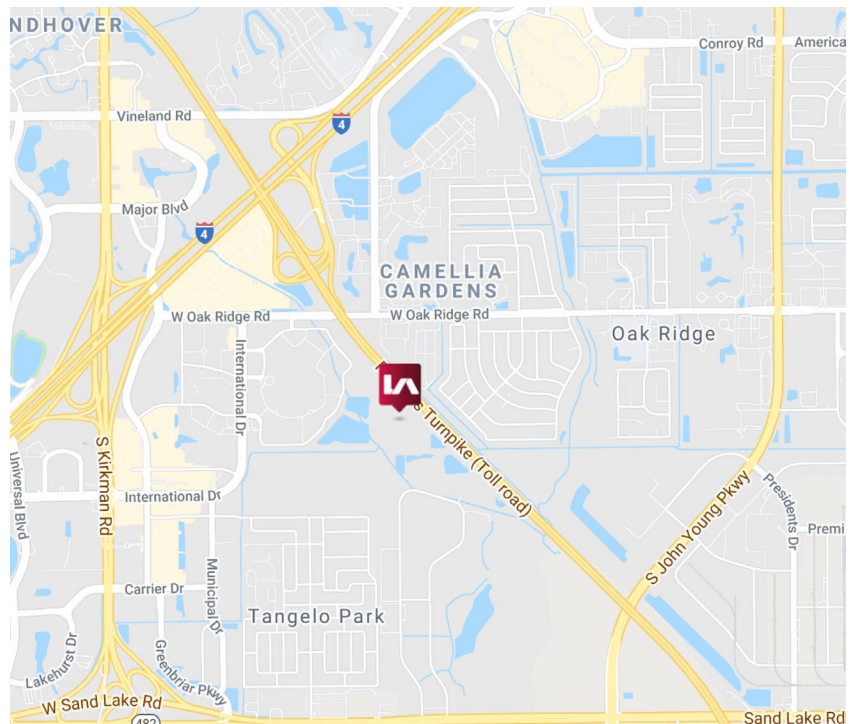
14,960 to 46,002 Square Feet Available



### BUILDING HIGHLIGHTS

- Total Size: 156,003 SF
- Available:
 

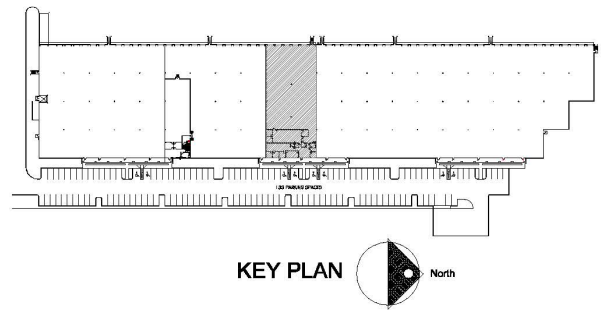
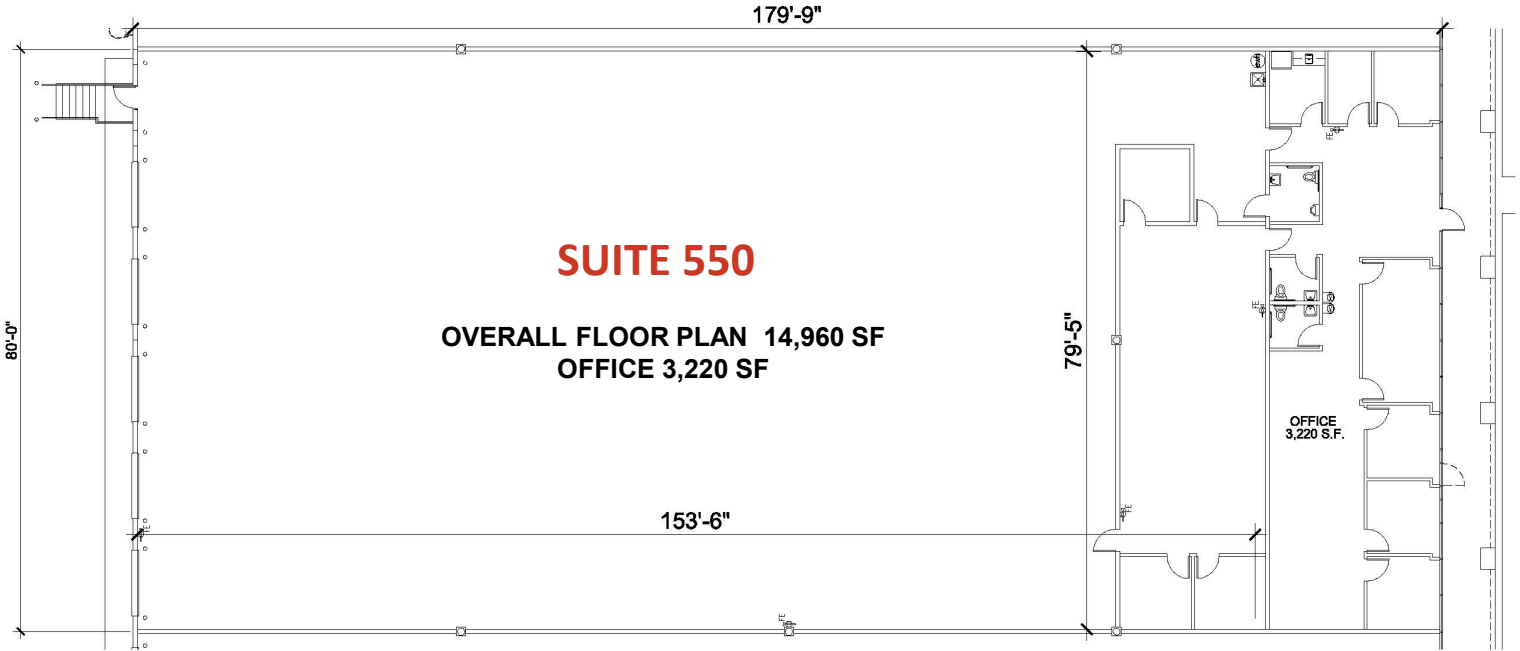
<b>Suite 550</b>	14,960 SF	3,220 SF
<b>Suite 590</b>	46,002 SF	2,062 SF
- Ceiling Height: 24' minimum clearance to bar joist
- Zoning: I-P
- Column Spacing: 40' W x 45' D
- Building Depth; 180'
- Truck Court: 185'
- Car Parking: 135
- Trailer Parking: Overflow Available
- Fire Protection: ESFR
- Power: Suite 550: 200 amps 277/480V  
Suite 590: 400 amps 277/480V





**CLARION PARTNERS**

Crownpointe V | 7320 Kingspointe Parkway



For more information on this opportunity, please contact



**William "Bo" Bradford, CCIM, SIOR**  
321.281.8502  
bbradford@lee-associates.com



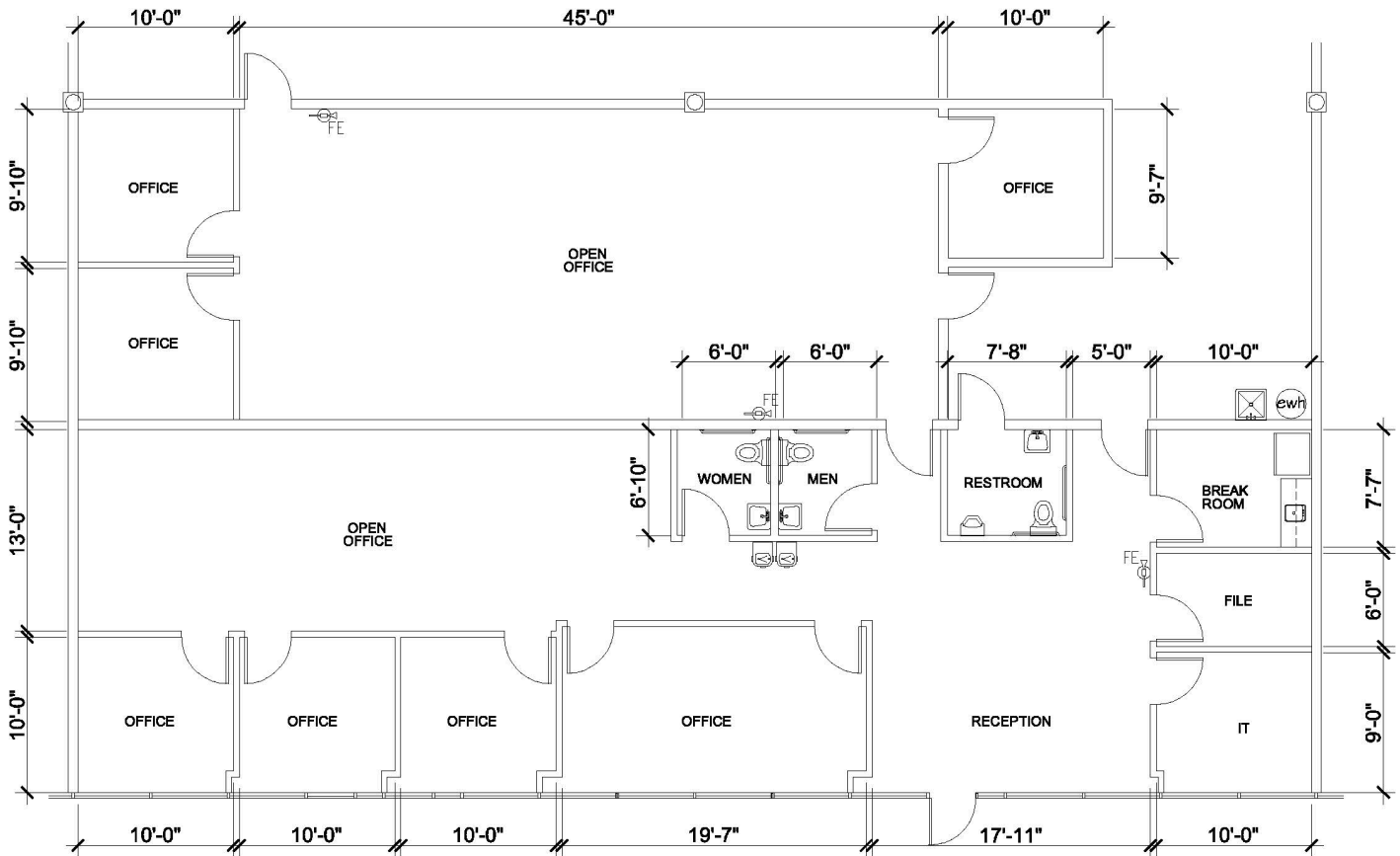
**CLARION PARTNERS**

[www.clarionpartners.com](http://www.clarionpartners.com)



# CLARION PARTNERS

Crownpointe V | 7320 Kingspointe Parkway



OFFICE 3,220 SF

For more information on this opportunity, please contact



William "Bo" Bradford, CCIM, SIOR  
321.281.8502  
bbradford@lee-associates.com



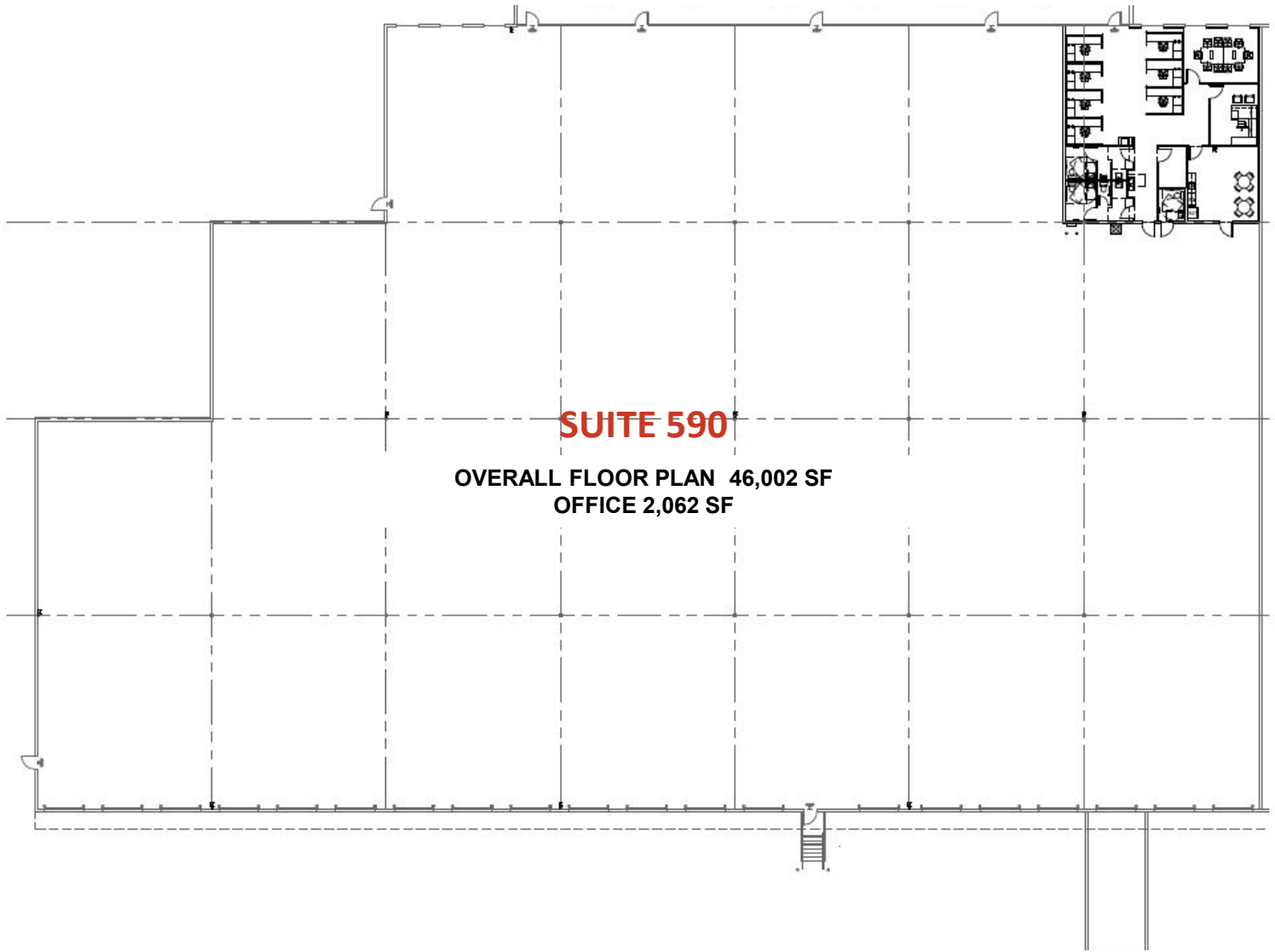
CLARION PARTNERS

www.clarionpartners.com



**CLARION PARTNERS**

Crownpointe V | 7320 Kingspointe Parkway



For more information on this opportunity, please contact



**William "Bo" Bradford, CCIM, SIOR**  
321.281.8502  
bbradford@lee-associates.com



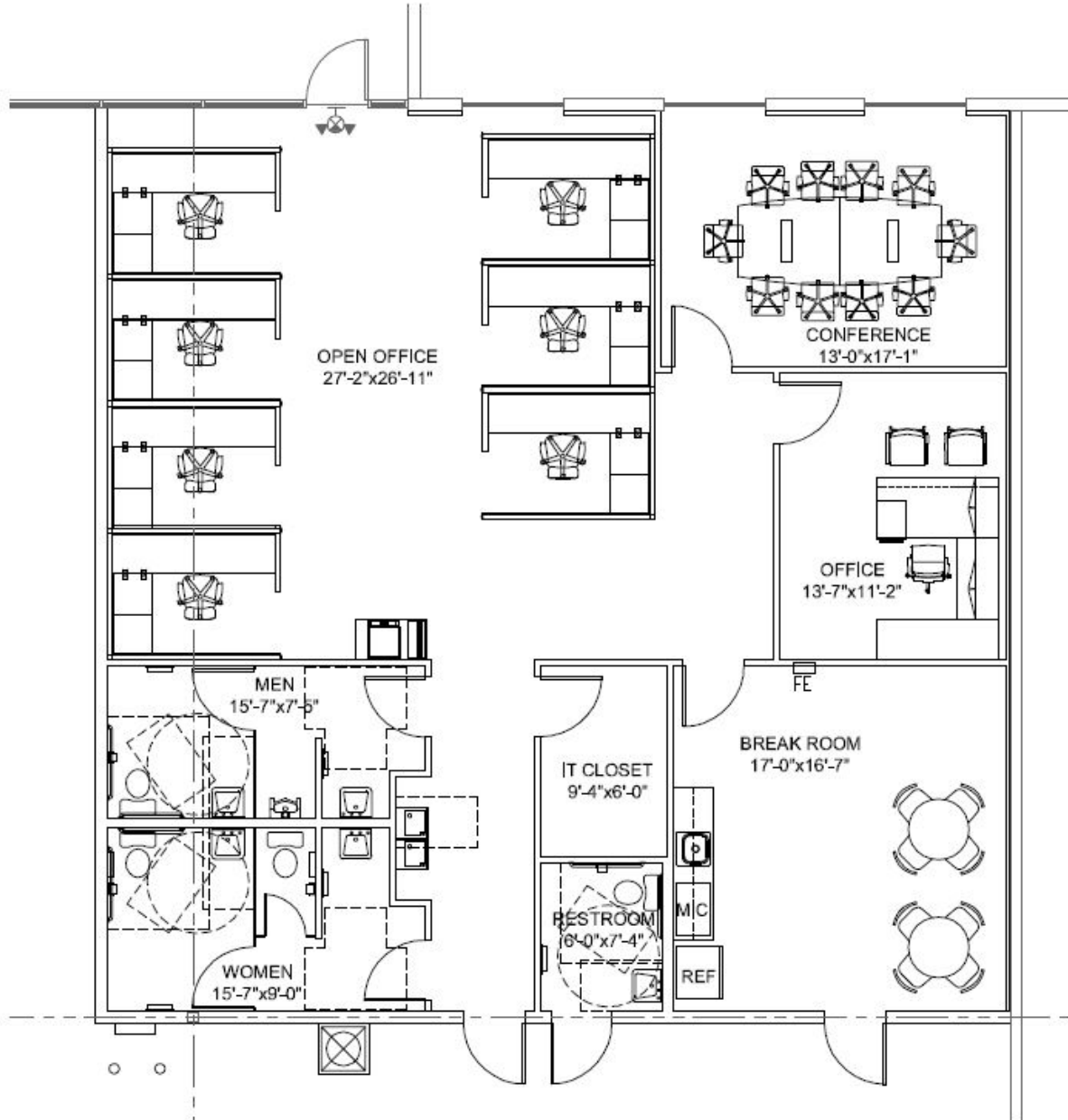
**CLARION PARTNERS**

[www.clarionpartners.com](http://www.clarionpartners.com)



# CLARION PARTNERS

Crownpointe V | 7320 Kingspointe Parkway



**OFFICE 2,062 SF**

For more information on this opportunity, please contact



William "Bo" Bradford, CCIM, SIOR  
321.281.8502  
bbradford@lee-associates.com



**CLARION PARTNERS**

[www.clarionpartners.com](http://www.clarionpartners.com)