

PLUG & PLAY AVAILABLE

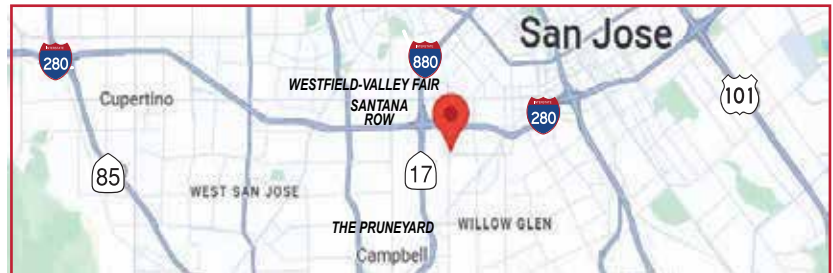


828 SOUTH BASCOM AVENUE | SAN JOSE, CA.

Features:

- Modern Office Building with Contemporary Interiors
- Professionally Managed Property
- Secured Building Access After Business Hours
- Surrounded by Numerous Lunch Choices
- Centrally Located to 280/880/17 Interchange

- So convenient.....+/- 5 Min Drive to Santana Row/Downtown San Jose/ Willow Glen/The Pruneyard/Downtown Campbell



Please Contact Exclusive Agent:

JULIE MERCIK jmercik@ritchiecommercial.com
DRE Lic. #00851651 1.408.234.1599

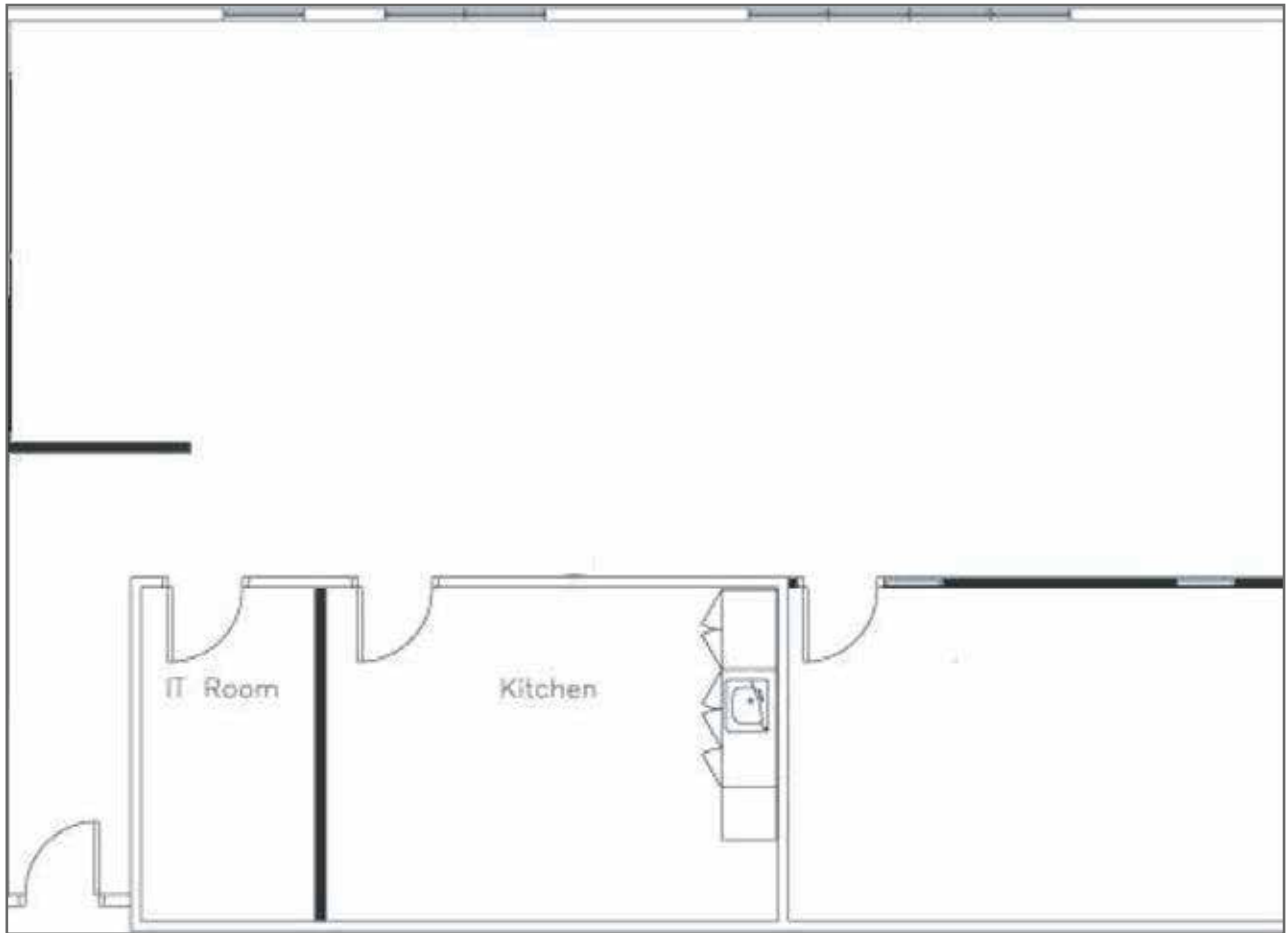
RITCHIE Commercial
RESPONSIBLE REAL ESTATE

34 W. SANTA CLARA STREET, SAN JOSE, CA 95113
DRE # 01209214 | www.ritchiecommercial.com
1 408.971.2700 f 1 408.971.1600

The information contained herein has been obtained from sources we deem reliable. We cannot, however assume responsibility for its accuracy.



828 SOUTH BASCOM AVENUE, SUITE 200, SAN JOSE



828 SOUTH BASCOM AVENUE, SUITE 180, SAN JOSE

