

# SUBLEASE

# 8929 UNIVERSITY CENTER LANE

SAN DIEGO, CALIFORNIA 92122



## MEDICAL/OFFICE AVAILABLE

INDIVIDUAL SUITES AVAILABLE FROM 150 SF  
SPECIAL PROMOTIONAL RATE OF \$3.50/SF/FSG

**TIM CAJKA**

Vice President ▪ Lic #00870357  
(619) 961-5258 ▪ tcajka@voitco.com

**JON BOLAND**

Senior Vice President ▪ Lic. #00999843  
(858) 458-3312 ▪ jboland@voitco.com

**CHRIS DURBIN**

Advisor ▪ Lic. #02227661  
(858) 458-3339 ▪ cdurbin@voitco.com

**Voit**

REAL ESTATE SERVICES

**HEALTH+**  
REAL ESTATE ADVISORS

# PROPERTY FEATURES



SUBLEASE RATE **\$3.50 /SF FSG**  
THE MOST ECONOMICAL OPTION IN THE UTC MARKET



**Suite 100**  
**±5,417 RSF**  
**AVAILABLE NOW**  
DIVISIBLE - CONTACT BROKER



4.5/1,000 SF PARKING RATIO  
FREE SURFACE LEVEL PARKING



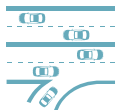
FOOD, FITNESS, HOTEL, ENTERTAINMENT  
& SHOPPING WITHIN WALKING DISTANCE



IDEAL FOR HEALTHCARE, MEDICAL, AND  
WELLNESS GROUPS WITH SHORT-TERM  
OFFICE/ADMINISTRATIVE NEEDS



CLOSE PROXIMITY TO UCSD, VA MEDICAL CENTER,  
SCRIPPS MEMORIAL HOSPITAL - LA JOLLA, AND  
UCSD JACOBS MEDICAL CENTER

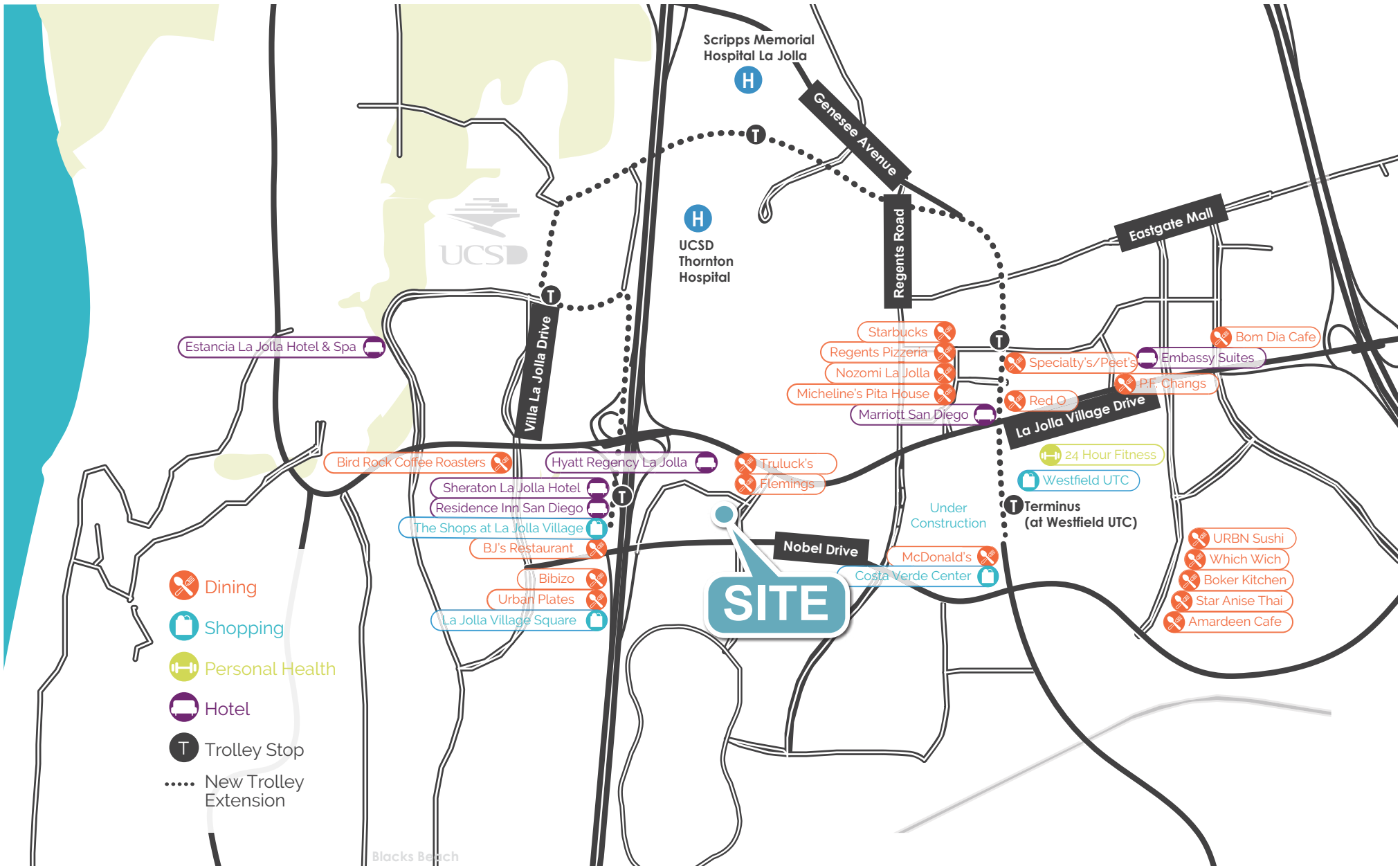


CLOSE PROXIMITY TO I-5 FREEWAY ACCESS



10 MINUTE WALK TO NOBEL TRANSIT CENTER





## TIM CAJKA

Vice President ▪ Lic #00870357  
 (619) 961-5258 ▪ tcajka@voitco.com

## JON BOLAND

Senior Vice President ▪ Lic. #00999843  
 (858) 458-3312 ▪ jboland@voitco.com

## CHRIS DURBIN

Advisor ▪ Lic. #02227661  
 (858) 458-3339 ▪ cdurbin@voitco.com

4180 La Jolla Village Drive, Suite 100, La Jolla, CA 92037 • 858.453.0505 • 858.408.3976 Fax • Lic #01991785 • www.VoitCo.com

# Voit

REAL ESTATE SERVICES

**HEALTH+**  
 REAL ESTATE ADVISORS

Licensed as a Real Estate Salespersons by the DRE. ©2026 Voit Real Estate Services, Inc. All Rights Reserved. The information contained herein has been obtained from sources we deem reliable. While we have no reason to doubt its accuracy, we do not guarantee it.