



FOR LEASE

KEARNY MESA INDUSTRIAL PARK

6970-7170, 7310-7374 CONVOY COURT / SAN DIEGO, CA 92111

CBRE

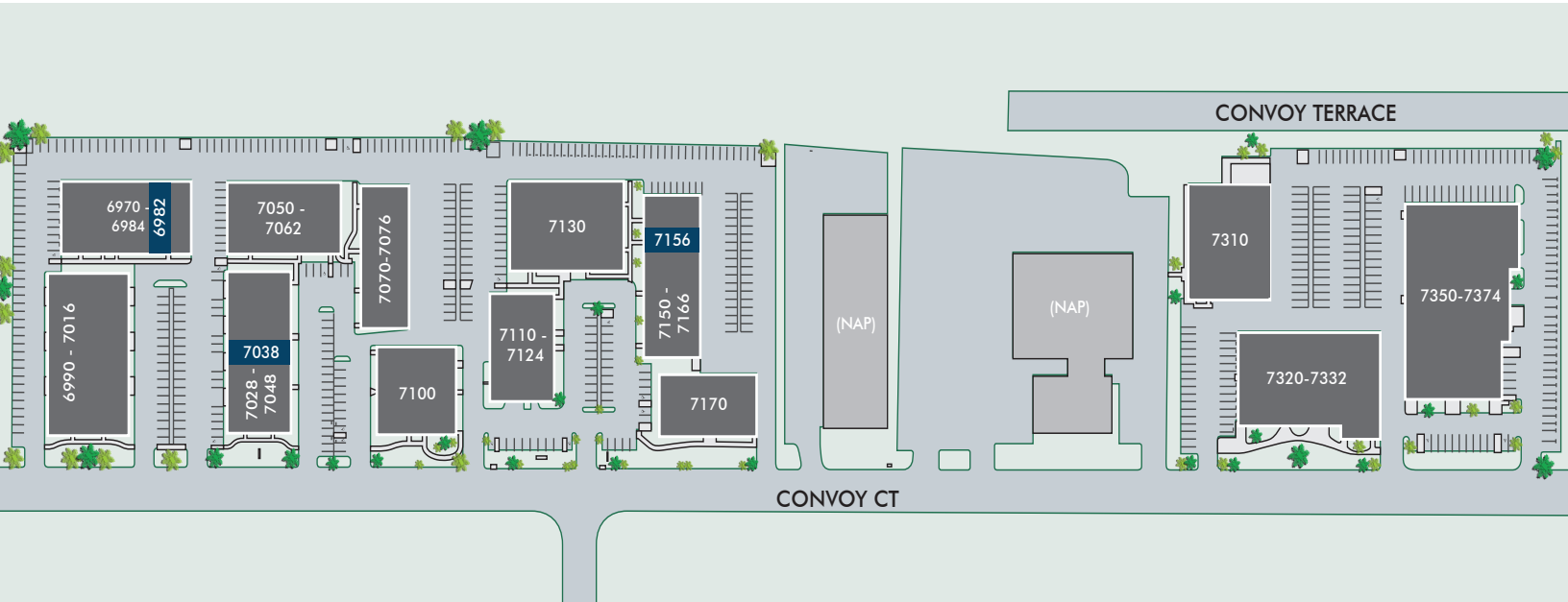


PROJECT FEATURES

- Outstanding Central San Diego Location
- Excellent Freeway Access to I-805, Hwy 163 & Hwy 52
- Dock & Grade Level Loading Doors
- Time Warner Fiber & Cable Connectivity Available
- Approximately 14' - 20' Clear Height
- Strong Institutional Ownership
- On Site Deli
- 2.7/1,000 Parking Ratio



AVAILABILITY



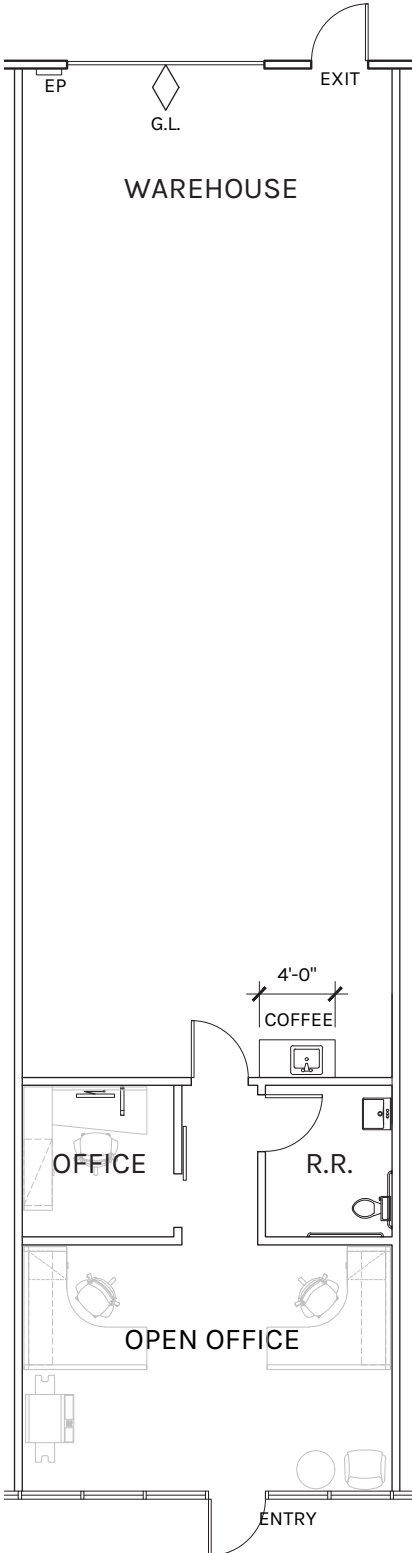
ADDRESS	SF	LEASE RATE	COMMENTS
6982 Convoy Court	1,564 SF	\$2.20/SF MG (est. CAMs = \$0.22/SF)	Floorplan includes approximately 28% office / 72% warehouse with (1) grade level loading door. Available Immediately.
7038 Convoy Court	2,417 SF	\$2.20/SF MG (est. CAMs = \$0.22/SF)	Floorplan includes approximately 17% office / 83% warehouse with (1) grade level loading door. Available Immediately.
7156 Convoy Court	1,458 SF	\$2.20/SF MG (est. CAMs = \$0.22/SF)	Floorplan includes approximately 22% office / 78% warehouse with (1) grade level loading door. Available Immediately.



FLOOR PLAN

6982 CONVOY COURT

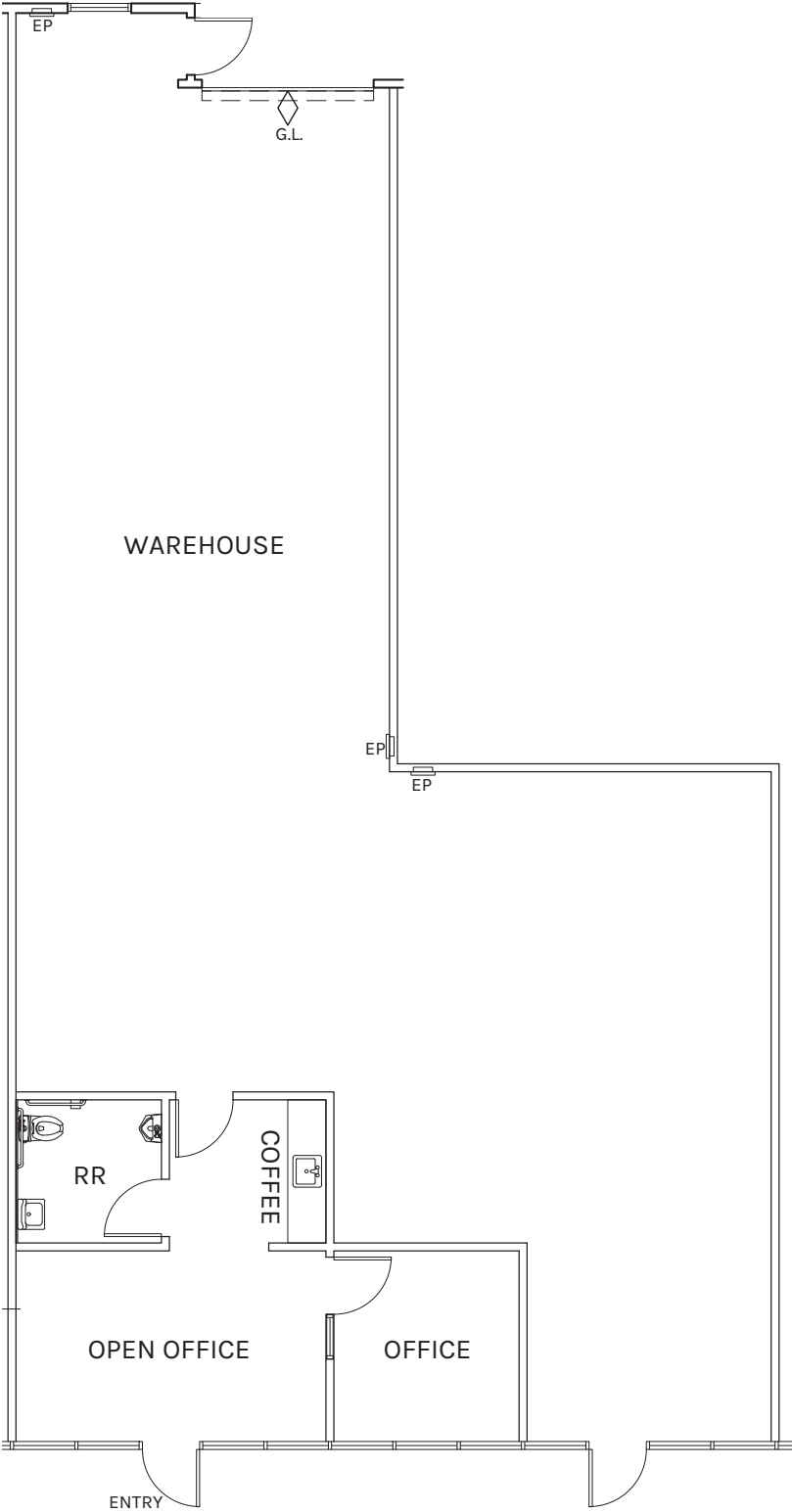
1,564 SF



FLOOR PLAN

7038 CONVOY COURT

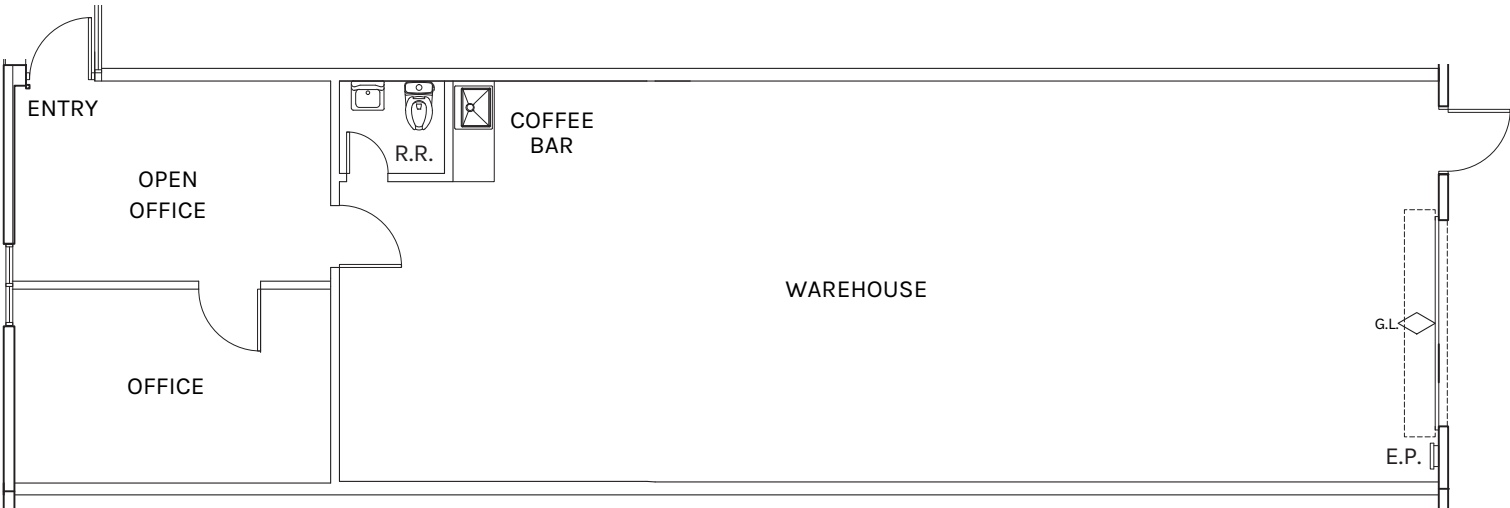
2,417 SF



FLOOR PLAN

7156 CONVOY COURT

1,458 SF



FOR LEASE

KEARNY MESA INDUSTRIAL PARK

6970-7170, 7310-7374 CONVOY COURT / SAN DIEGO, CA 92111

CONTACT US

KYLE WRIGHT

Senior Associate
+1 858 546 4621
kyle.wright2@cbre.com
Lic. 02083245

SEAN WILLIAMS, SIOR

Senior Vice President
+1 858 546 4625
sean.williams@cbre.com
Lic. 01475415

RYAN SPARKS, SIOR

Senior Vice President
+1 858 546 2606
ryan.sparks@cbre.com
Lic. 01784736

CBRE

