



Google

Lease Rate
\$5.50 psf nnn

TOTAL RENOVATION UNDER WAY
New roof, mechanical system and parking lot

251 Newfield Avenue
& 600 Oakwood Avenue
West Hartford, CT 06106

±30,000 sf industrial building
on ±2 acres for lease in West Hartford

Features

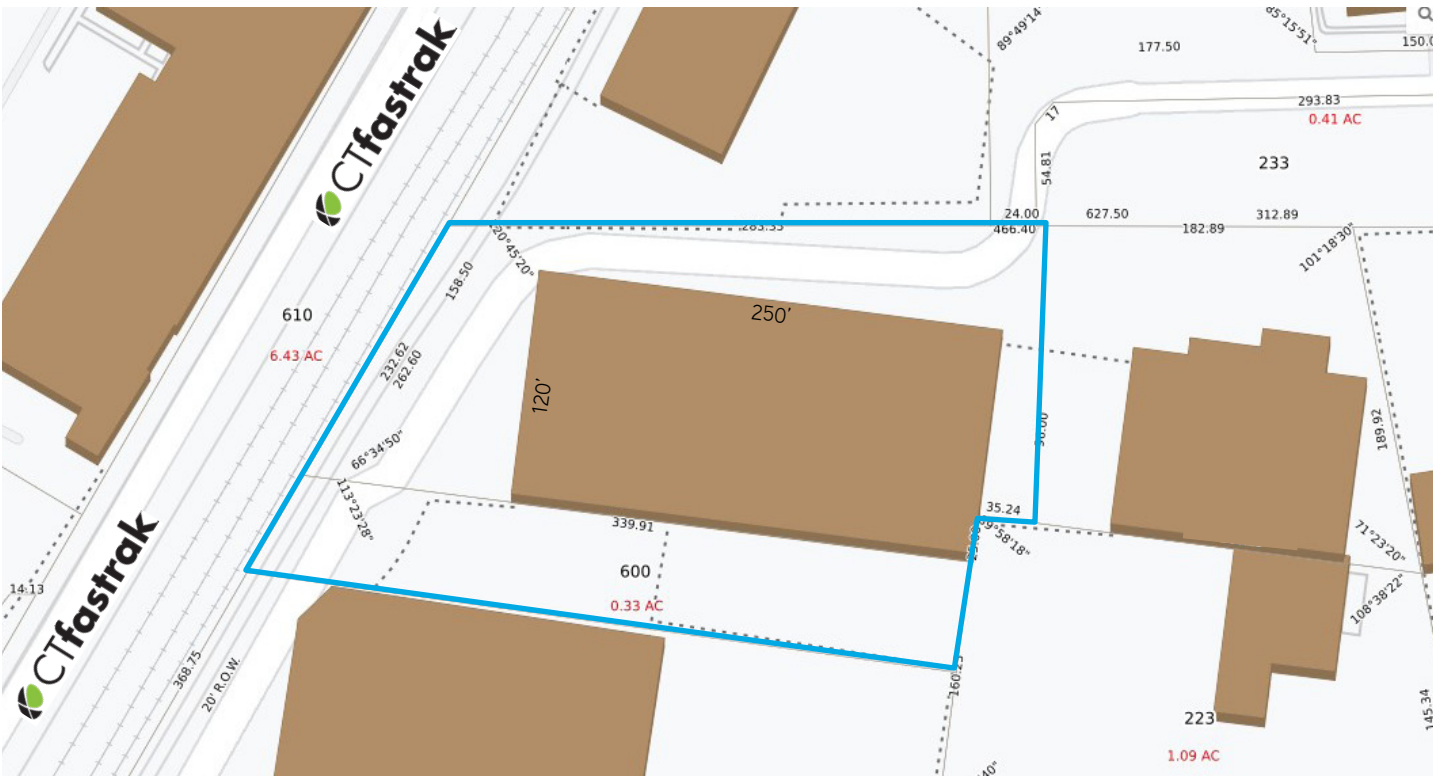
- ±30,000 sf industrial building
- ±2 acre site (±1.75 acres on 251 Newfield Ave & ±0.33 acres on 600 Oakwood Ave)
- ±2,000 sf office space (New)
- 2 loading docks & 2 drive-in doors
- 14' ceiling height
- 100% sprinklered; Wet system
- Ample parking
- New Electric: 240 volts / 400 ampsi-G Zoning

Nicholas Morizio, CRE, SIOR
860 616 4022
nicholas.morizio@ct.colliers.com

864 Wethersfield Avenue
Hartford, CT 06114
860 249 6521 Main

colliers.com/hartford

Copyright © 2025 Colliers International. Information herein has been obtained from sources deemed reliable, however its accuracy cannot be guaranteed. The user is required to conduct their own due diligence and verification.



Contact:

Nicholas Morizio, CRE, SIOR
 860 616 4022
 nicholas.morizio@ct.colliers.com

864 Wethersfield Avenue
 Hartford, CT 06114
 860 249 6521 Main

colliers.com/hartford