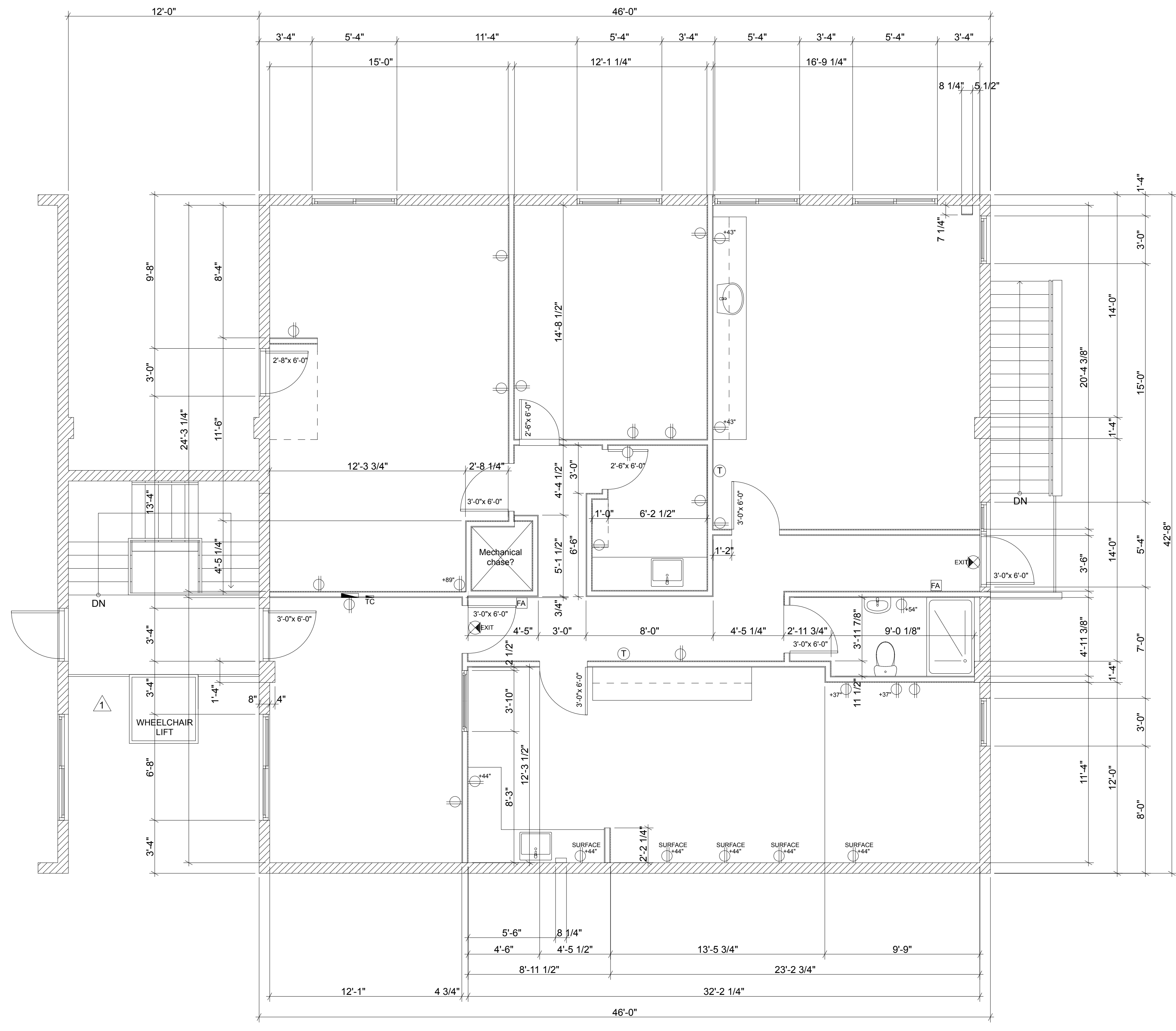


EXISTING REFLECTED CEILING PLAN SUITE D
 SCALE: 1/4" = 1'-0"



EXISTING FLOOR PLAN SUITE D
 LOCATED AT BUILDING SECOND FLOOR
 SCALE: 1/4" = 1'-0" N

IF THE ABOVE DIMENSION DOES NOT MEASURE ONE INCH (1") EXACTLY, THE DRAWING WILL HAVE BEEN ENLARGED OR REDUCED, AFFECTING ALL LABELED SCALES.

REVISIONS	DATE

Copyright © Notice
 These construction documents in all forms, and all related documents performed in the preparation of these construction docs, are project specific, not for use or re-use by any party, except by written contract with Barbara Ricketts Architect. No reproductions of any kind without prior written permission by Barbara Ricketts Architect.