

TERMINAL WAREHOUSE
WEST CHELSEA
NEW YORK



Cannon Hill
Capital Partners



THE TUNNEL

FLOORS 1-2
22K SF

THE PENTHOUSE

FLOORS 8-14
270K RSF

THE FOUNDRY

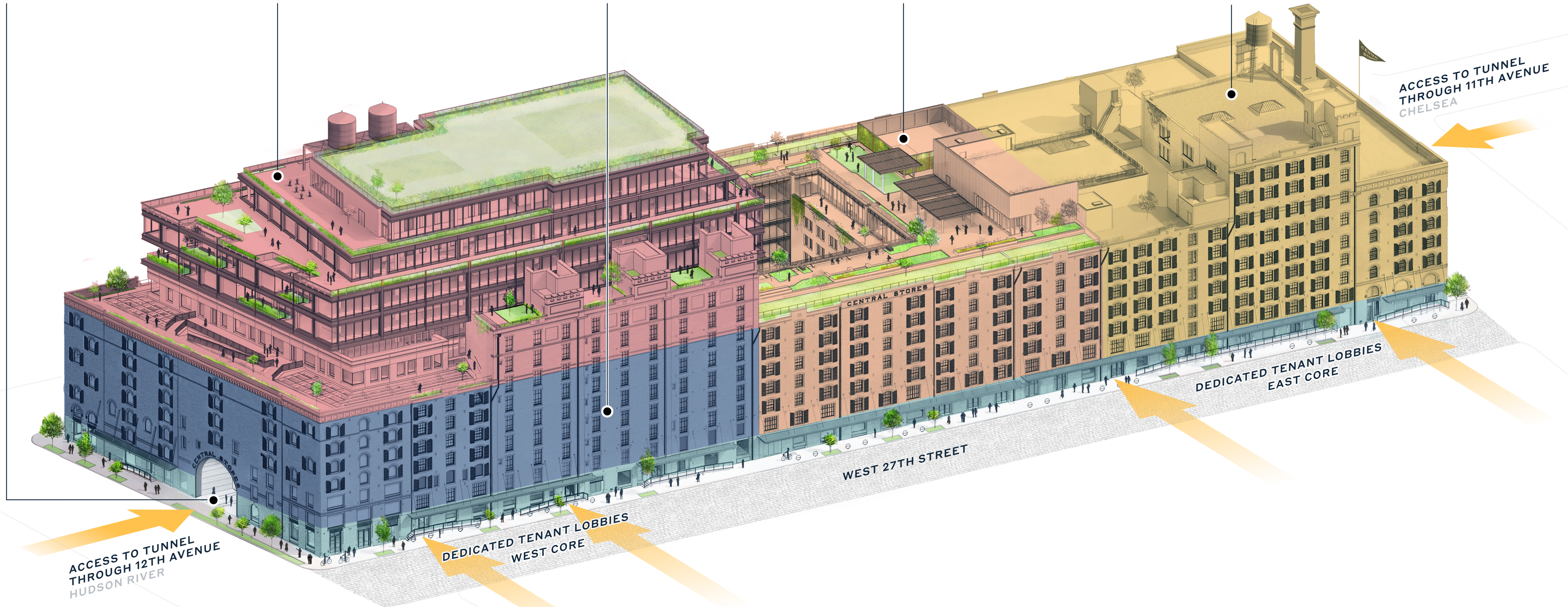
FLOORS 3-7
316K RSF

THE COURTYARD

FLOORS 3-7
195K RSF

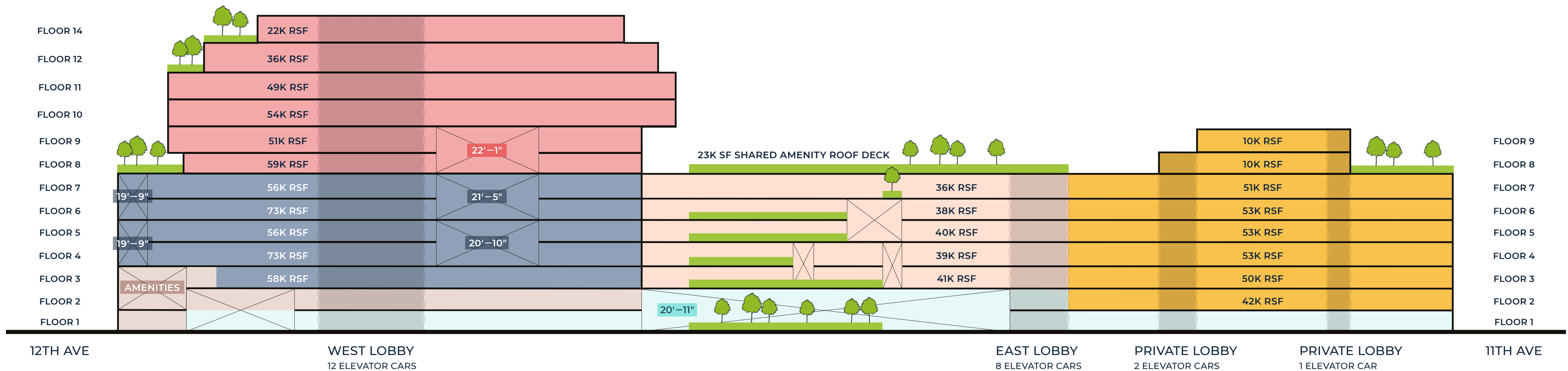
THE TIMBERS

FLOORS 2-9
322K RSF





TERMINAL WAREHOUSE CAMPUS



THE PENTHOUSE

- Floors 8–14
- 270K RSF Total
- 39K SF Private and Wrap-Around Terraces
- 23 Private Terraces

THE TUNNEL

- Floors 1–2
- 54K USF of Retail with Potential Additional Space on 2nd Floor
- 700 Feet Long

THE FOUNDRY

- Floors 3–7
- 316K RSF Total

SHARED AMENITIES

- 45K RSF
- 4K SF of The Park At Terminal
- 23K SF Shared Roof Terrace

THE COURTYARD

- Floors 3–7
- 195K RSF Total
- 7K SF Private Outdoor Terraces

LOADING DOCKS

- 5 Loading Docks on 28th Street

THE TIMBERS

- Floors 2–9
- 322K RSF Total
- 11,100 SF Private Outdoor Terraces

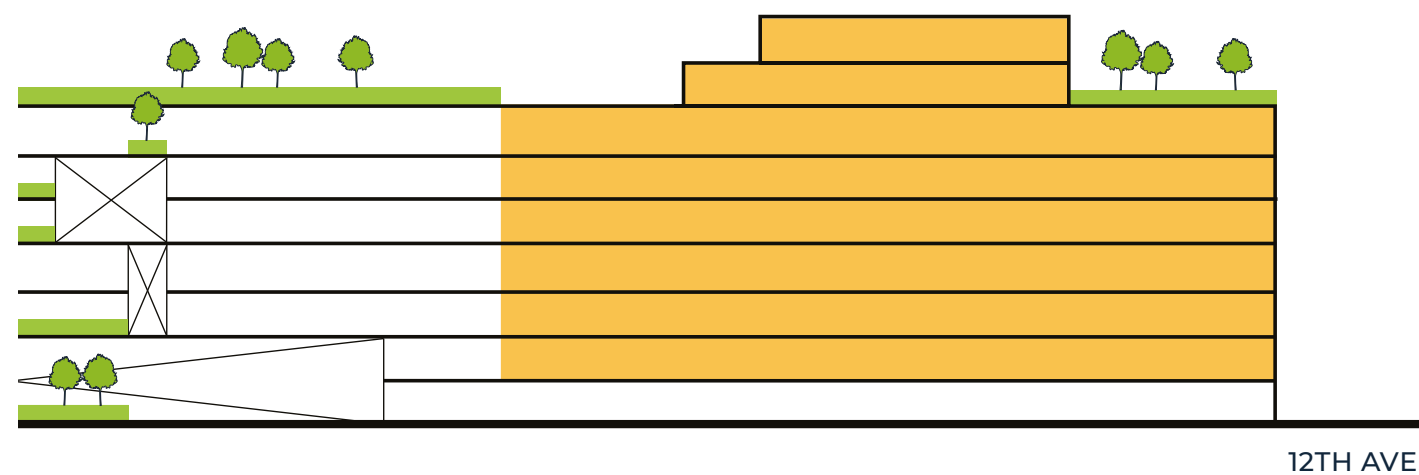
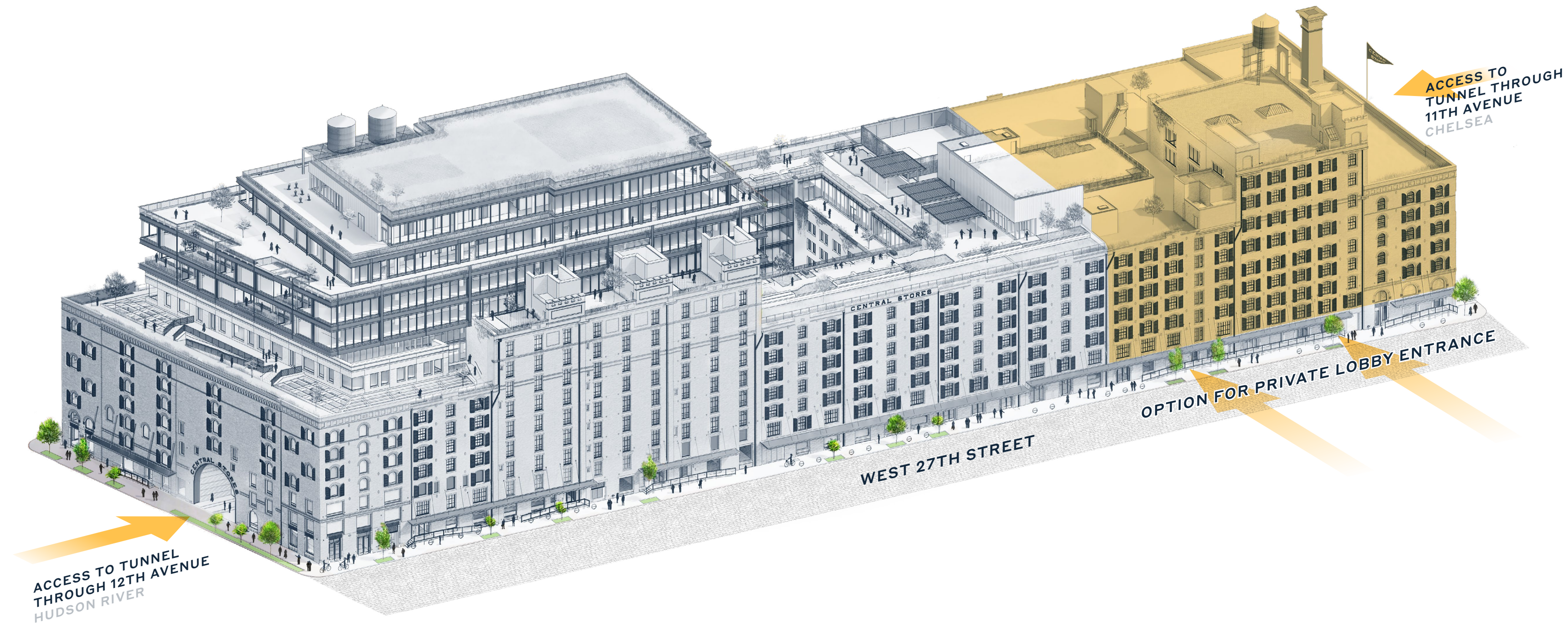
DOUBLE HEIGHT SPACES

COMMON AREAS



THE TIMBERS

- Floors 2–9
- Floor Size Range: 10K–53K RSF
- 322K RSF Total
- 1,100 SF Outdoor Roof Terrace
- 10K SF of Future Outdoor Space
- Tenant Delivery: Q3 2024
- TCO: Q4 2024
- Up to 14'-9" Slab-to-Slab Height





FLOOR 2

THE TIMBERS 42K RSF

TEST FIT

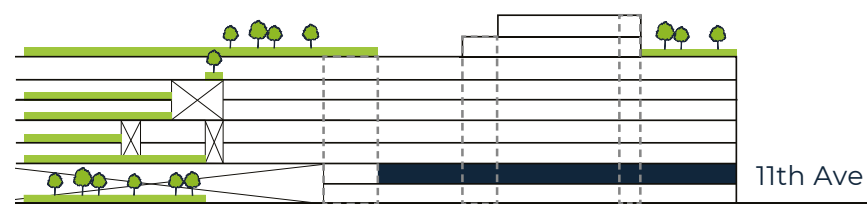
FEATURES

11'-5" Slab-to-Slab Height

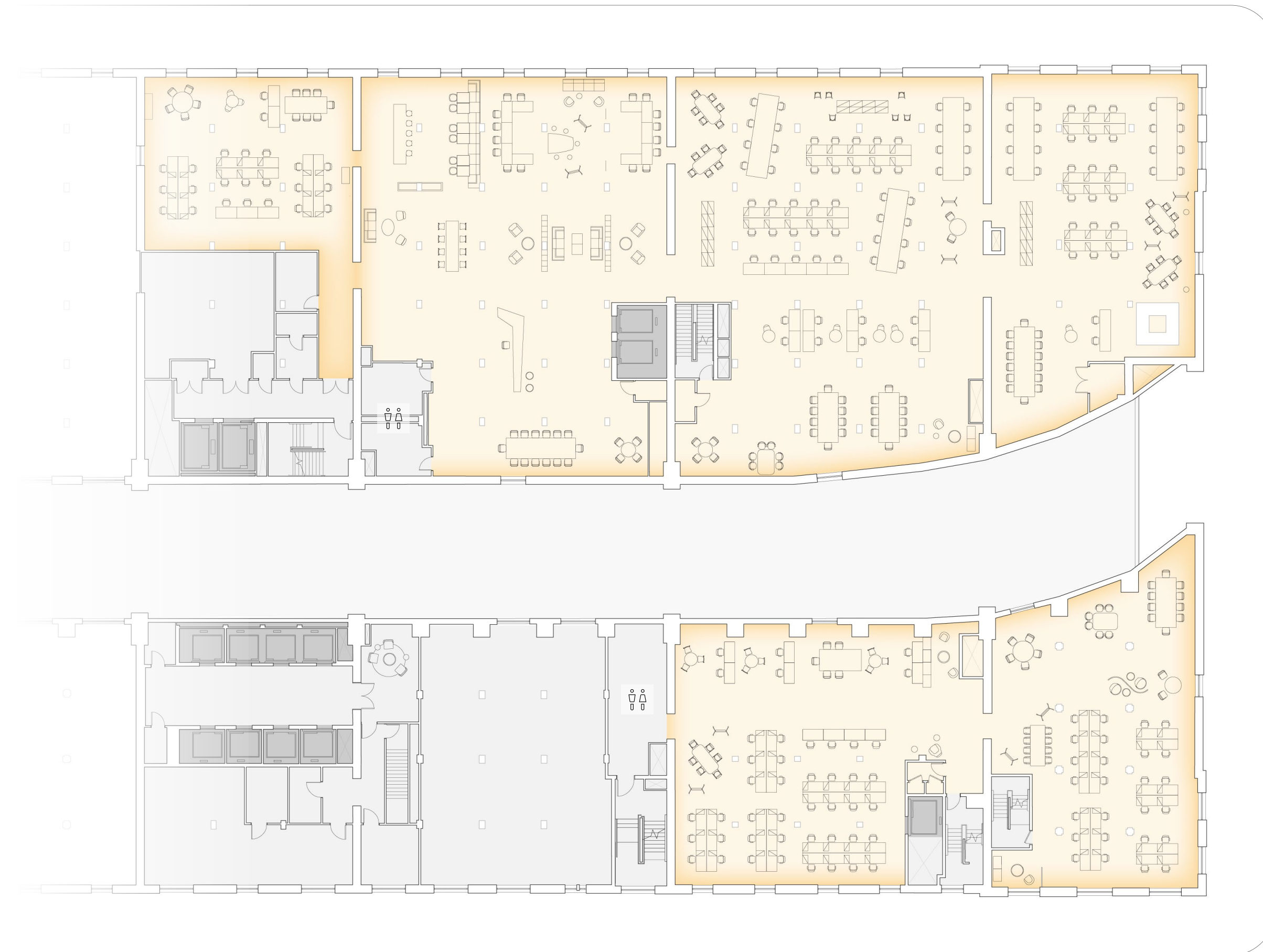
144 Workseats

- Workplace
- The Tunnel / Mech. & Service
- Elevators
- Potential Restroom

♂
♀



West 28th Street



11th Avenue

West 27th Street

FLOOR 3

THE TIMBERS 50K RSF

TEST FIT

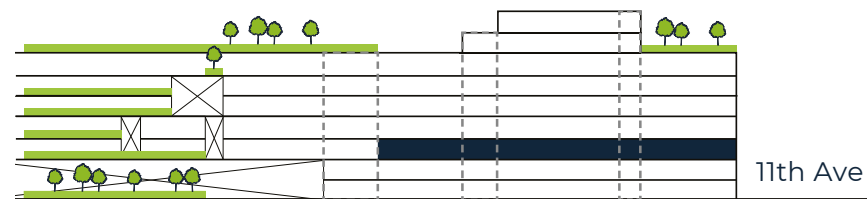
FEATURES

10'-11" Slab-to-Slab Height

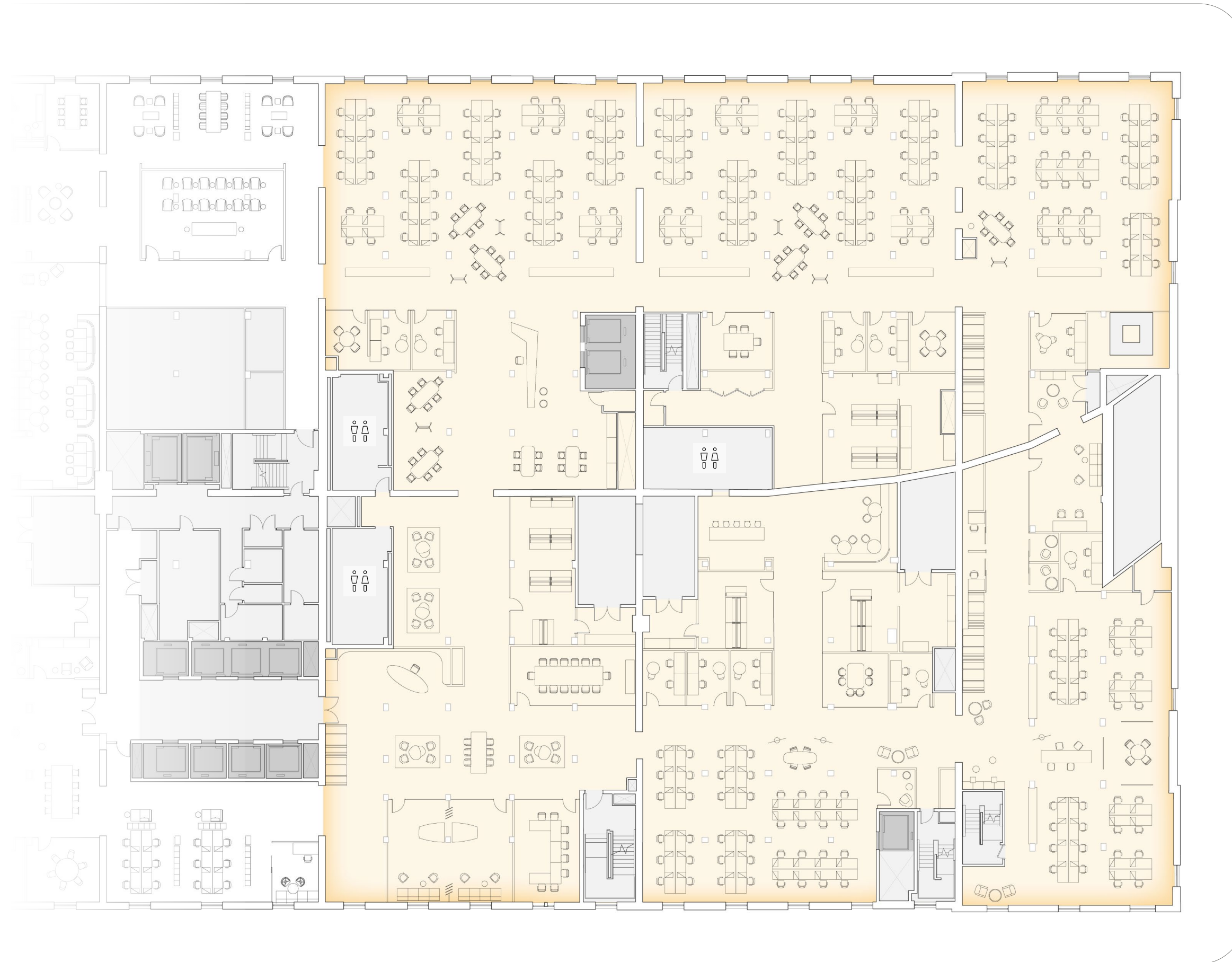
3,700 SF of Outdoor Space

244 Workseats

Workplace	
Mechanicals & Service	
Elevators	
Potential Restroom	



West 28th Street



11th Avenue

West 27th Street



FLOOR 4

THE TIMBERS 53K RSF

TEST FIT

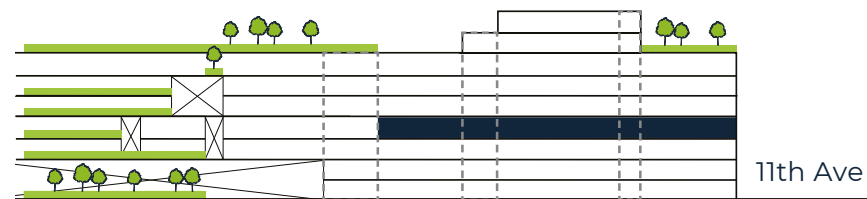
FEATURES

10'-8" Slab-to-Slab Height

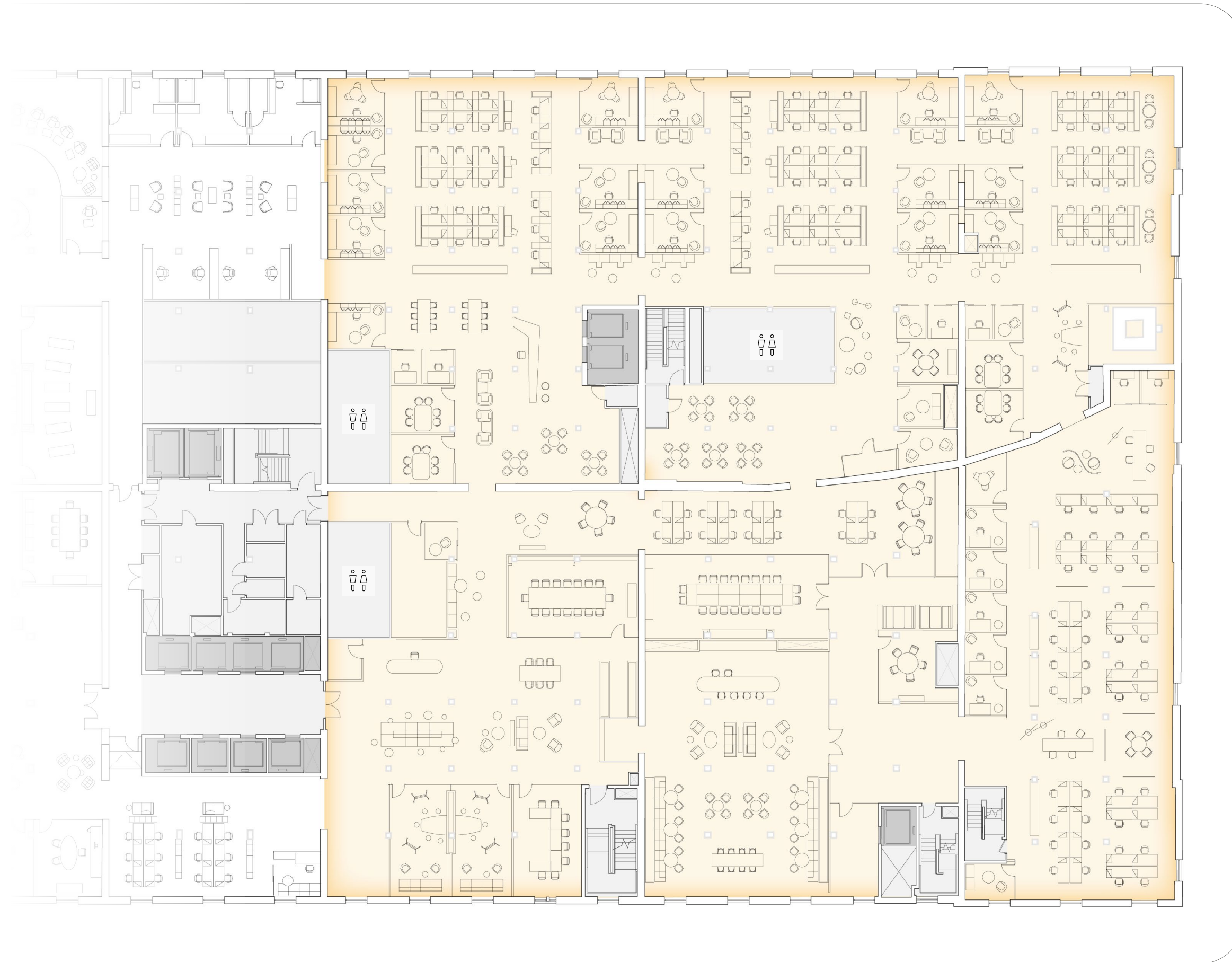
330 SF of Outdoor Space

148 Workseats

- Workplace
- Mechanicals & Service
- Elevators
- Potential Restroom ♂
♀



West 28th Street



11th Avenue

West 27th Street



FLOOR 5

THE TIMBERS 53K RSF

TEST FIT

FEATURES

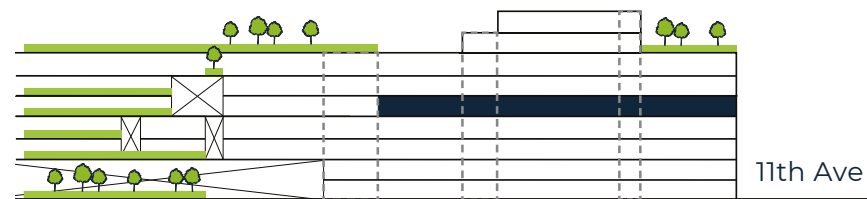
10'-10" Slab-to-Slab Height

330 SF of Outdoor Space

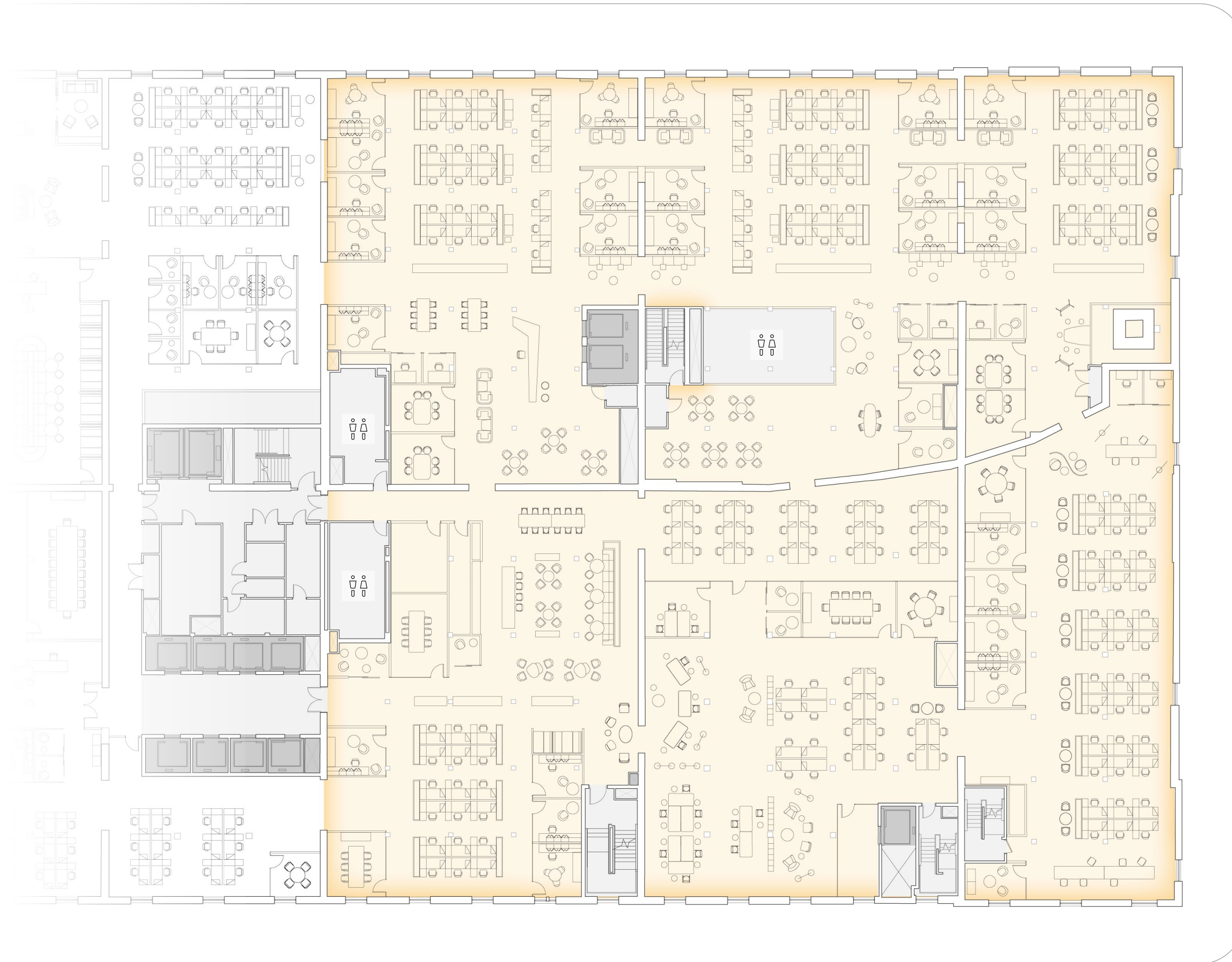
204 Workseats

- Workplace
- Mechanicals & Service
- Elevators
- Potential Restroom

♂
♀



West 28th Street



11th Avenue

West 27th Street

FLOOR 6

THE TIMBERS 53K RSF

TEST FIT

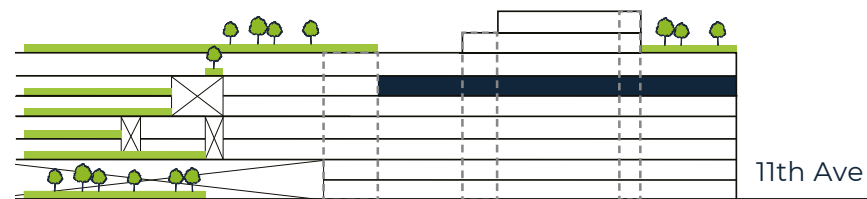
FEATURES

10'-10" Slab-to-Slab Height

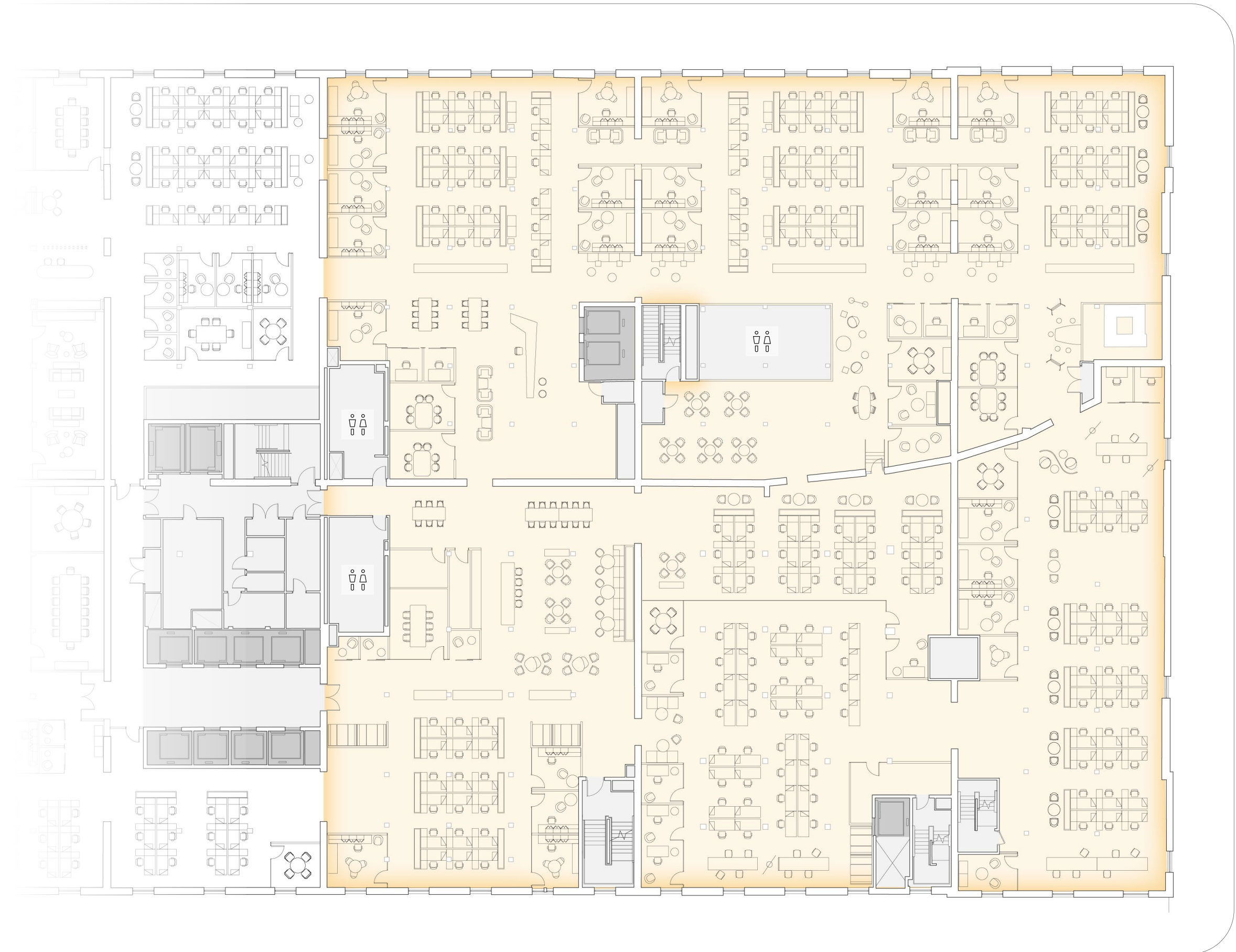
660 SF of Outdoor Space

211 Workseats

- Workplace
- Mechanicals & Service
- Elevators
- Potential Restroom



West 28th Street



11th Avenue

West 27th Street



FLOOR 7

THE TIMBERS 51K RSF

TEST FIT

FEATURES

10'-9" – 14'-9" Slab-to-Slab Height

1,540 SF of Outdoor Space

212 Workseats

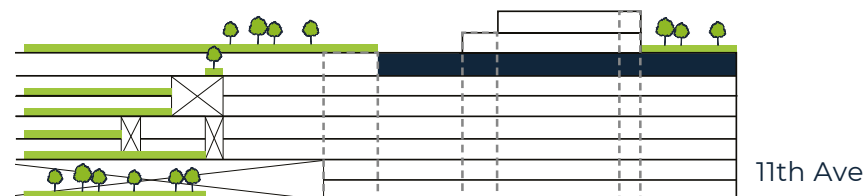
Workplace 

Mechanicals & Service 

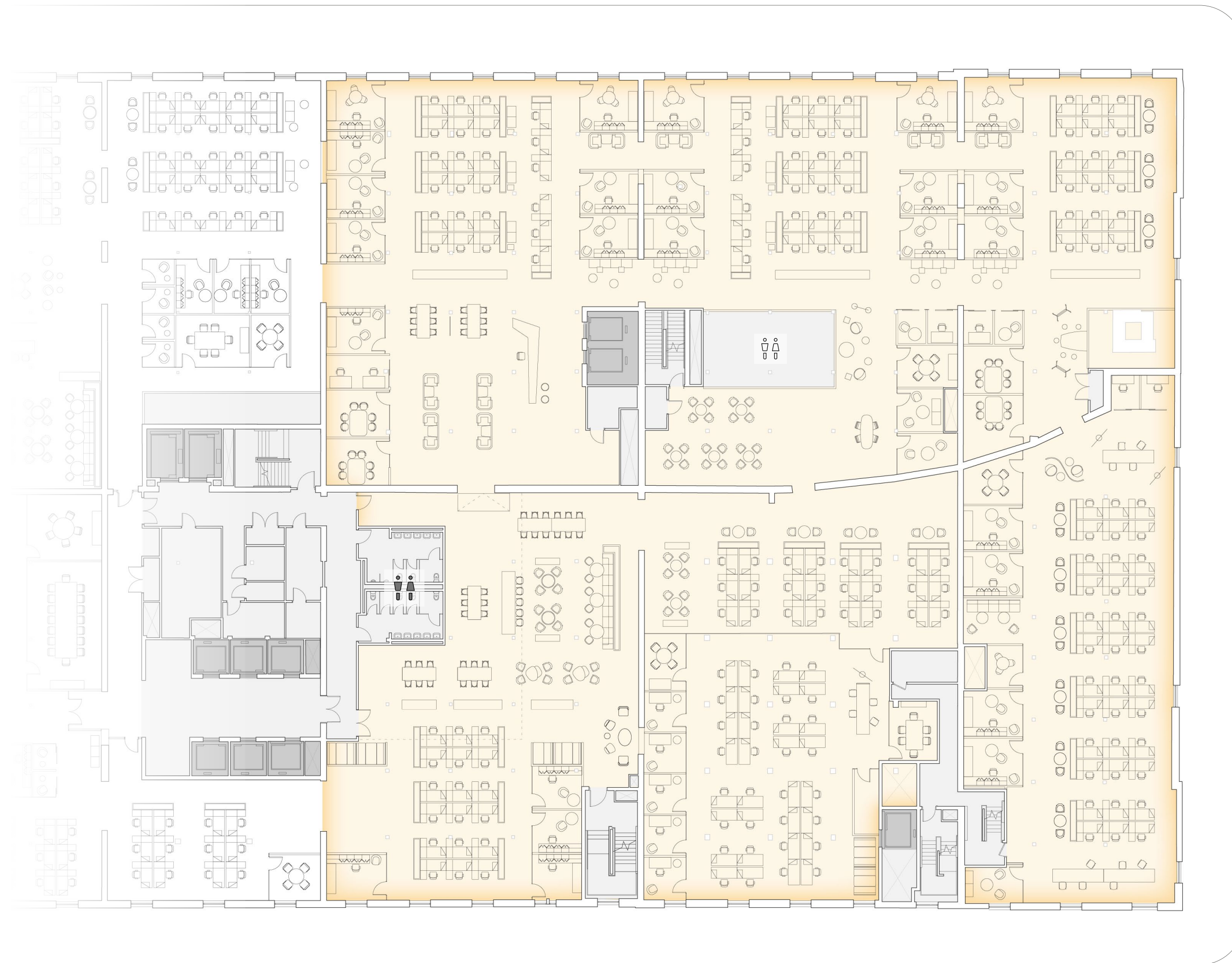
Elevators 

Restroom 

Potential Restroom 



West 28th Street



11th Avenue

West 27th Street

FLOOR 8

THE TIMBERS 10K RSF

TEST FIT

FEATURES

11'-4" Slab-to-Slab Height

28,390 SF of Outdoor Space

24 Workseats

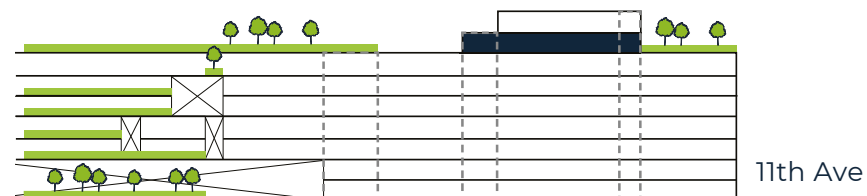
72 Collaboration Seats

Workplace

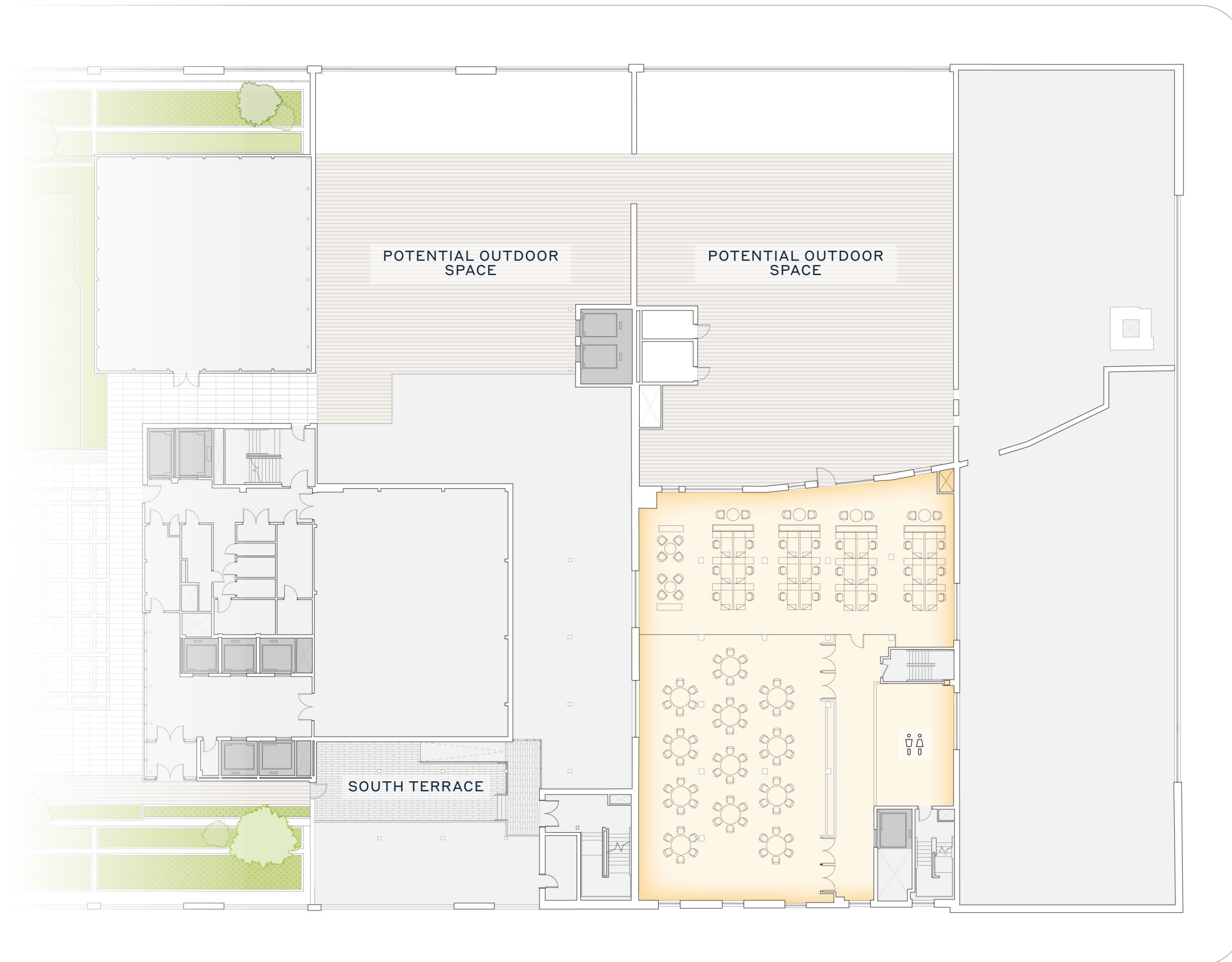
Mechanicals & Service

Elevators

Potential Restroom



West 28th Street



11th Avenue

West 27th Street



FLOOR 9

THE TIMBERS 10K RSF

TEST FIT

FEATURES

11'-4" Slab-to-Slab Height

1,620 SF of Outdoor Space

24 Workseats

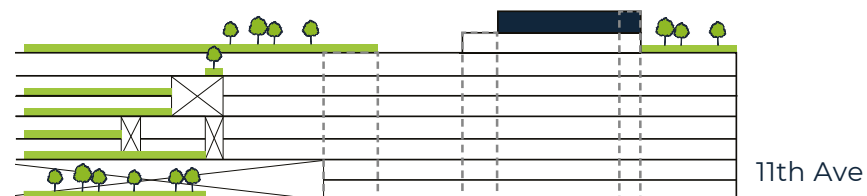
72 Collaboration Seats

Workplace 

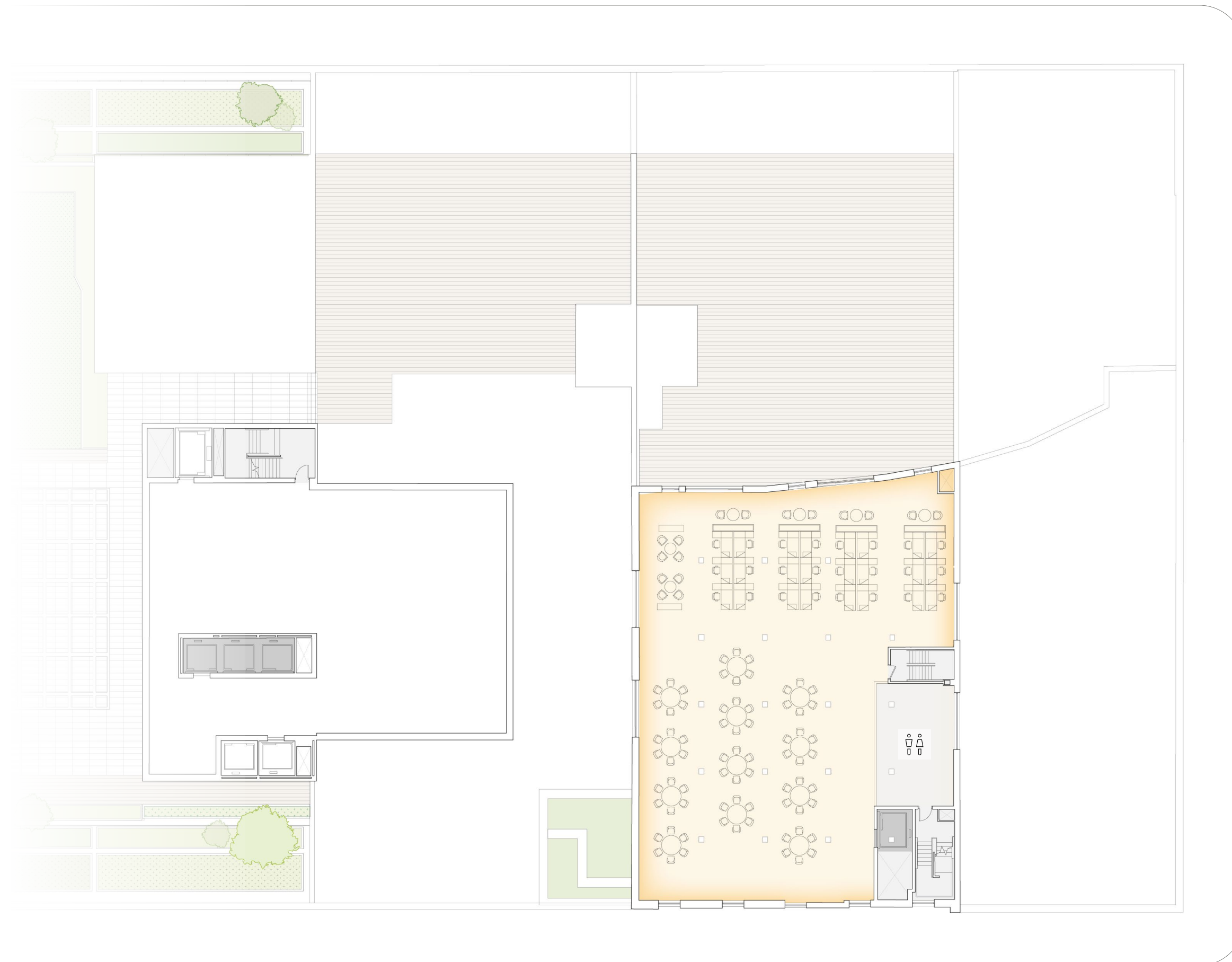
Mechanicals & Service 

Elevators 

Potential Restroom 



West 28th Street



11th Avenue

West 27th Street

COLLABORATIVE WORKSPACE WITH ORIGINAL TIMBER

THE TIMBERS



**CONTACT
INFORMATION**



JONATHAN TOOTELL
jonathan.tootell@ll-holding.com
212 920 3388

JAMES MARCELLINO
james.marcellino@ll-holding.com
646 341 9838



TED KOLTIS
ted.koltis@columbia.reit
212 433 4103



DEVELOPMENT TEAM

261 11th Avenue
New York, NY 10001
www.terminalwarehouse.nyc

CONTACT US



JOSH KURILOFF
josh.kuriloff@cushwake.com
212 841 7894

ANDREW BRAVER
andrew.braver@cushwake.com
212 841 5976

OFFICE LEASING TEAM

ALAN SCHMERZLER
alan.schmerzler@cushwake.com
212 841 5930

STEVEN SOUTENDIJK
steven.soutendijk@cushwake.com
212 713 6845

RETAIL LEASING TEAM

GUS FIELD
a.field@cushwake.com
212 841 5965

ANTHONY LOPRESTI
anthony.lopresti@cushwake.com
212 841 7739

NICHOLAS DYSENCHUK
nicholas.dysenchuk@cushwake.com
212 841 7739

CATHERINE MERCK
catherine.merck@cushwake.com
212 698 2621

PATRICK O'ROURKE
patrick.orourke@cushwake.com
212 660 7777

ERIC HAZEN
eric.hazen@cushwake.com
212 841 7809

HEATHER THOMAS
heather.thomas@cushwake.com
212 841 7520

SEAN MORAN
sean.moran@cushwake.com
212 841 7668