

# FOR LEASE

BALTIMORE COUNTY, MD

# 3100-3102 LORD BALTIMORE DR

EXECUTIVE PARK WEST | 3100-3300 LORD BALTIMORE DRIVE | WINDSOR MILL, MD 21244



## PROPERTY HIGHLIGHTS:

- ▶ NEW FITNESS CENTER AND CONFERENCE ROOM
- ▶ TWELVE BUILDINGS CONSISTING OF 450,000 SF IN A GATED 30-ACRE BUSINESS PARK
- ▶ ON-SITE DAYCARE AND RESTAURANT
- ▶ WITHIN 3 MILES OF SOCIAL SECURITY ADMINISTRATION HEADQUARTERS AND CENTERS FOR MEDICARE AND MEDICAID SERVICES
- ▶ WITHIN 2 MILES OF BELTWAY EXIT 17 AT SECURITY BOULEVARD AND 1 MILE OF BELTWAY EXIT 18 AT LIBERTY ROAD

**DAVID S. BROWN**  
ENTERPRISES, LTD.

**KEVIN KEANE | SVP, OFFICE LEASING**  
410.581.2519 | KEVIN@DAVIDSBROWN.COM

**BRENT MANGUM | VP, OFFICE LEASING**  
410.581.2518 | BRENT@DAVIDSBROWN.COM

**NOAH ADLER | LEASING ASSOCIATE**  
410.581.2510 | NADLER@DAVIDSBROWN.COM

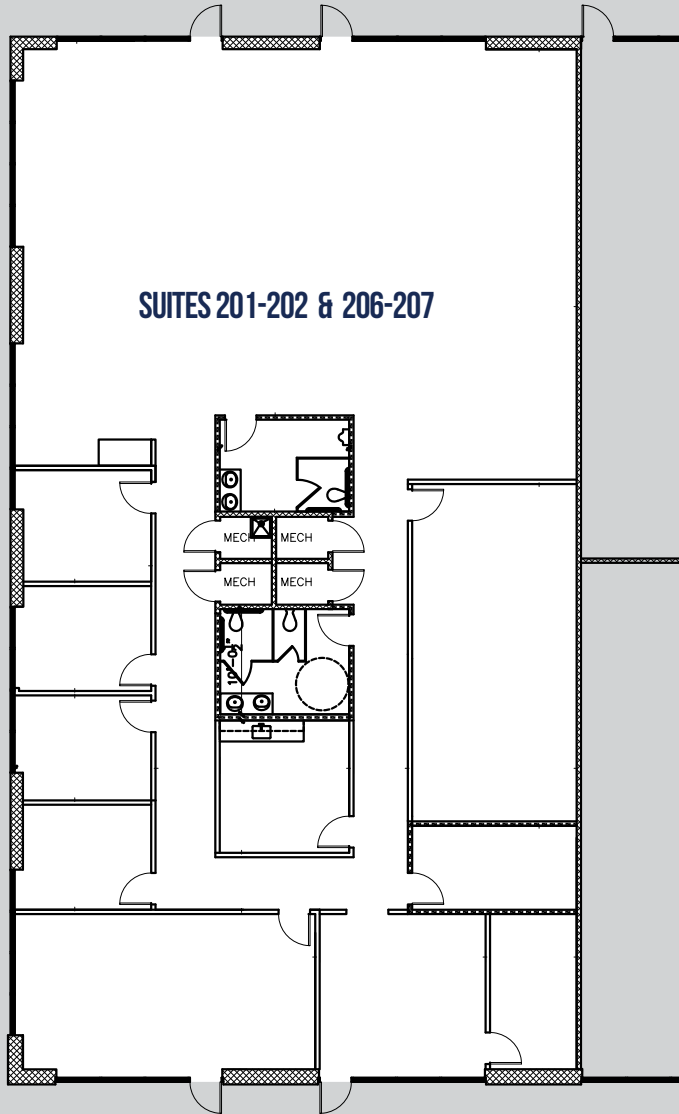
DAVID S. BROWN ENTERPRISES | 100 PAINTERS MILL ROAD, OWINGS MILLS, MD 21117 | 410.581.2520 | WWW.DAVIDSBROWN.COM |

# FOR LEASE

BALTIMORE COUNTY, MD

# 3100 LORD BALTIMORE DR

EXECUTIVE PARK WEST | 3100-3300 LORD BALTIMORE DRIVE | WINDSOR MILL, MD 21244



AVAILABLE

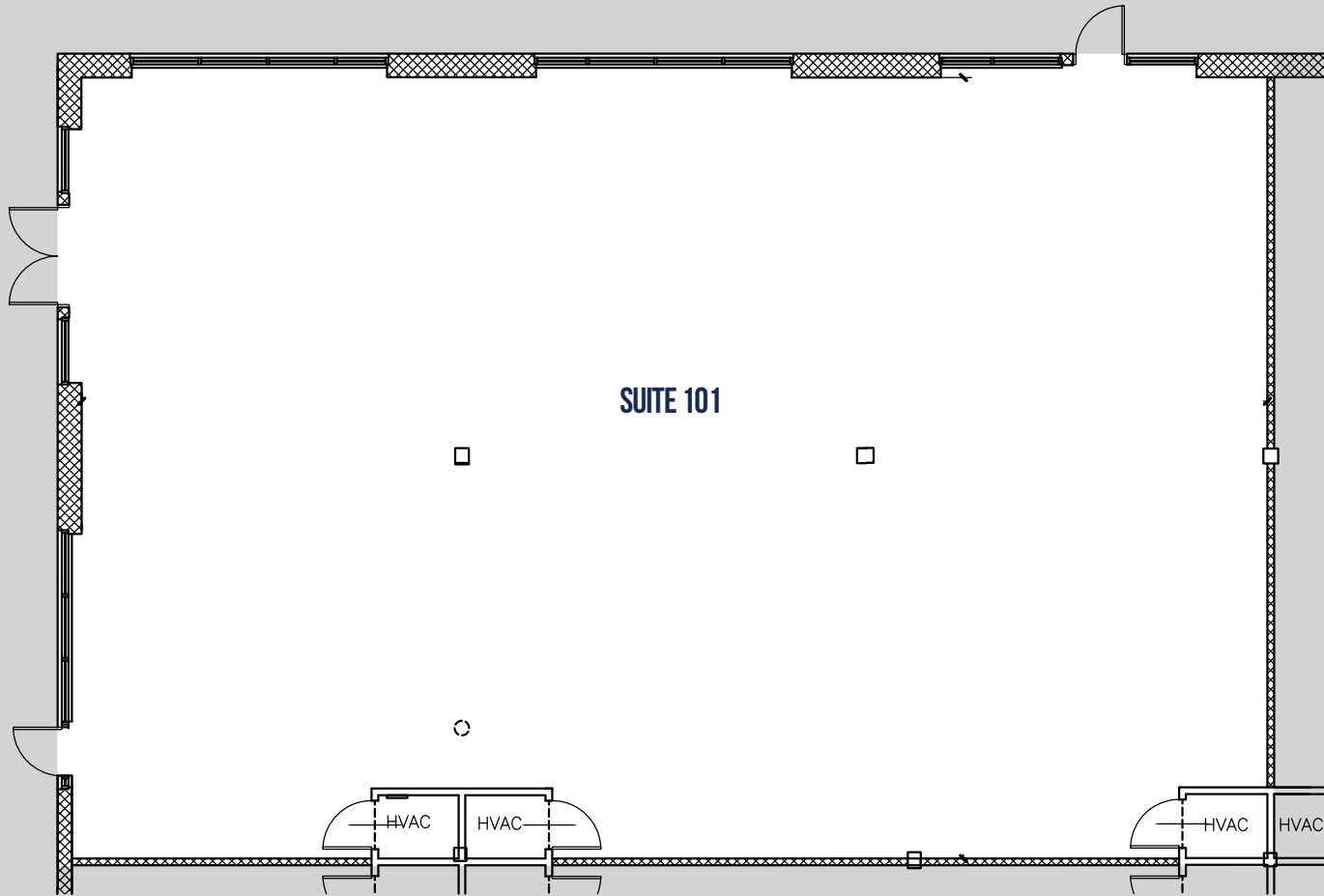
► SUITES 201-202 & 206-207: 5,390 SF

# FOR LEASE

BALTIMORE COUNTY, MD

# 3102 LORD BALTIMORE DR

EXECUTIVE PARK WEST | 3100-3300 LORD BALTIMORE DRIVE | WINDSOR MILL, MD 21244



AVAILABLE

▶ SUITE 101: 3,746 SF

**DAVID S. BROWN**  
ENTERPRISES, LTD.

**KEVIN KEANE | SVP, OFFICE LEASING**

410.581.2519 | KEVIN@DAVIDSBROWN.COM

**BRENT MANGUM | VP, OFFICE LEASING**

410.581.2518 | BRENT@DAVIDSBROWN.COM

**NOAH ADLER | LEASING ASSOCIATE**

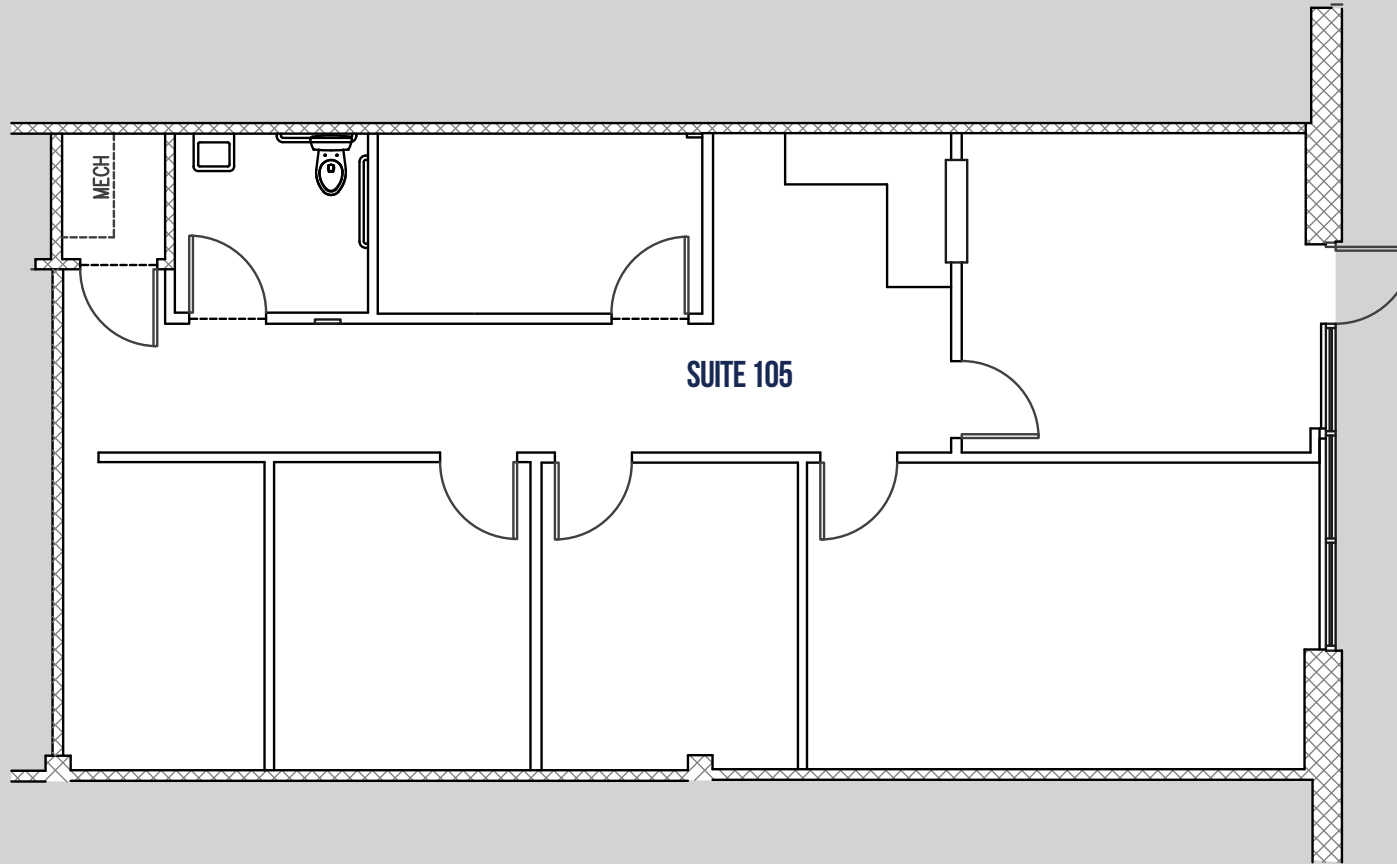
410.581.2510 | NADLER@DAVIDSBROWN.COM

# FOR LEASE

**B** BALTIMORE COUNTY, MD

# 3102 LORD BALTIMORE DR

EXECUTIVE PARK WEST | 3100-3300 LORD BALTIMORE DRIVE | WINDSOR MILL, MD 21244



AVAILABLE

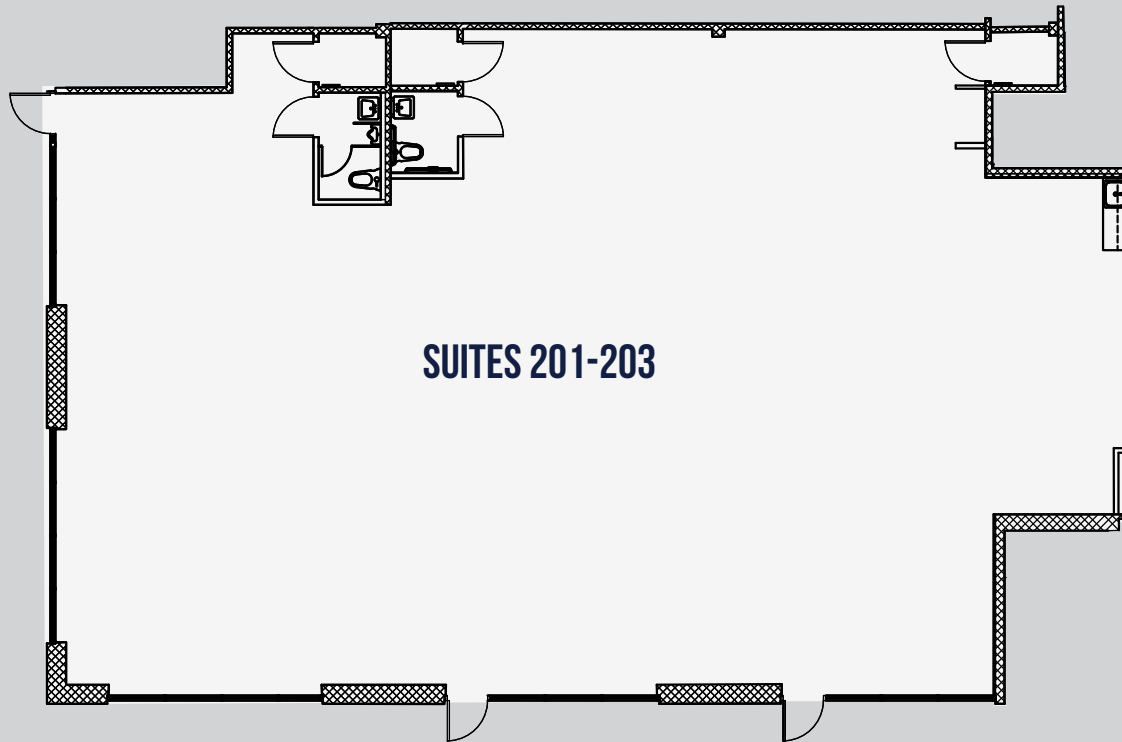
▶ SUITE 105: 1,265 SF

# FOR LEASE

**B** BALTIMORE COUNTY, MD

# 3102 LORD BALTIMORE DR

EXECUTIVE PARK WEST | 3100-3300 LORD BALTIMORE DRIVE | WINDSOR MILL, MD 21244



AVAILABLE

▶ SUITES 201-203: 3,816 SF

**DAVID S. BROWN**  
ENTERPRISES, LTD.

**KEVIN KEANE | SVP, OFFICE LEASING**

410.581.2519 | KEVIN@DAVIDSBROWN.COM

**BRENT MANGUM | VP, OFFICE LEASING**

410.581.2518 | BRENT@DAVIDSBROWN.COM

**NOAH ADLER | LEASING ASSOCIATE**

410.581.2510 | NADLER@DAVIDSBROWN.COM

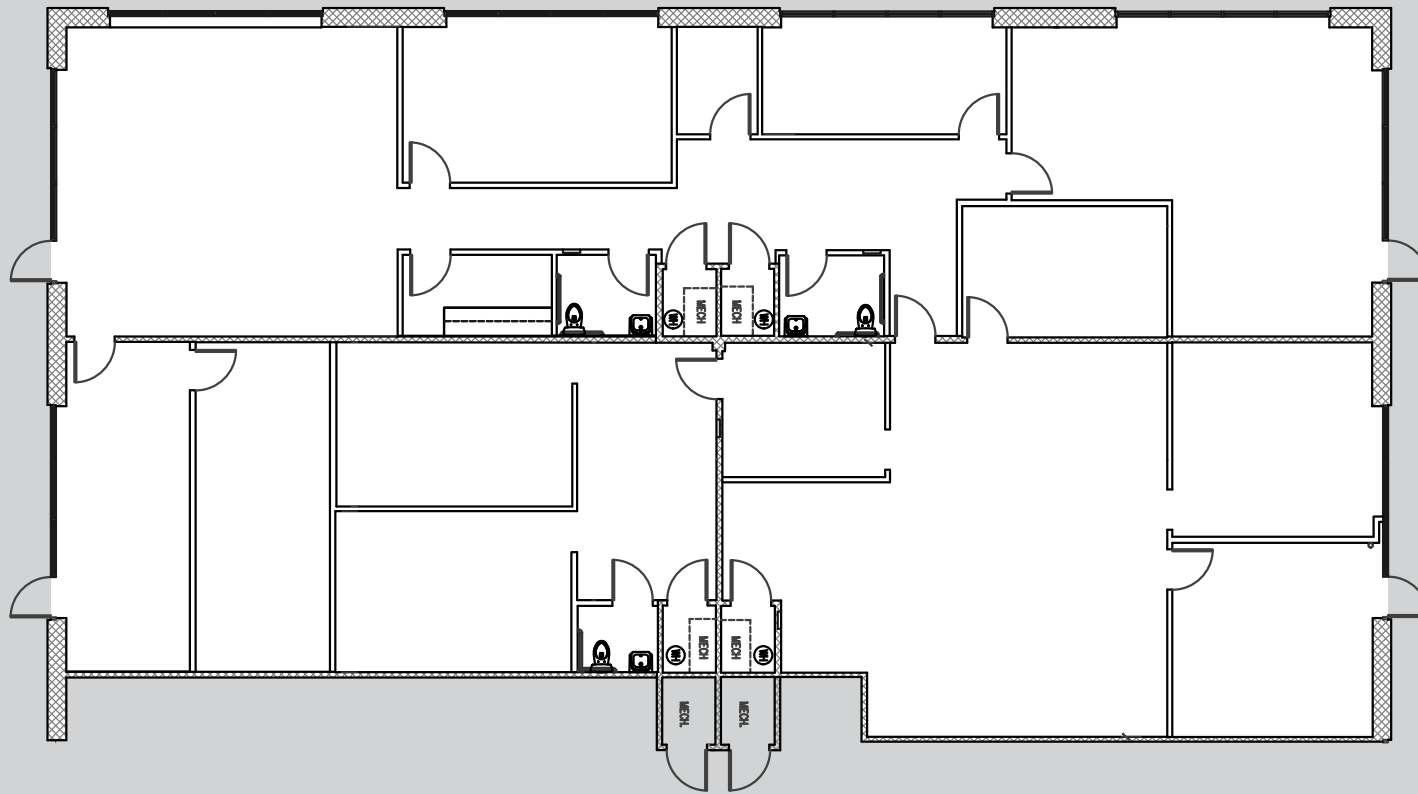
DAVID S. BROWN ENTERPRISES | 100 PAINTERS MILL ROAD, OWINGS MILLS, MD 21117 | 410.581.2520 | WWW.DAVIDSBROWN.COM |

# FOR LEASE

BALTIMORE COUNTY, MD

# 3102 LORD BALTIMORE DR

EXECUTIVE PARK WEST | 3100-3300 LORD BALTIMORE DRIVE | WINDSOR MILL, MD 21244



AVAILABLE

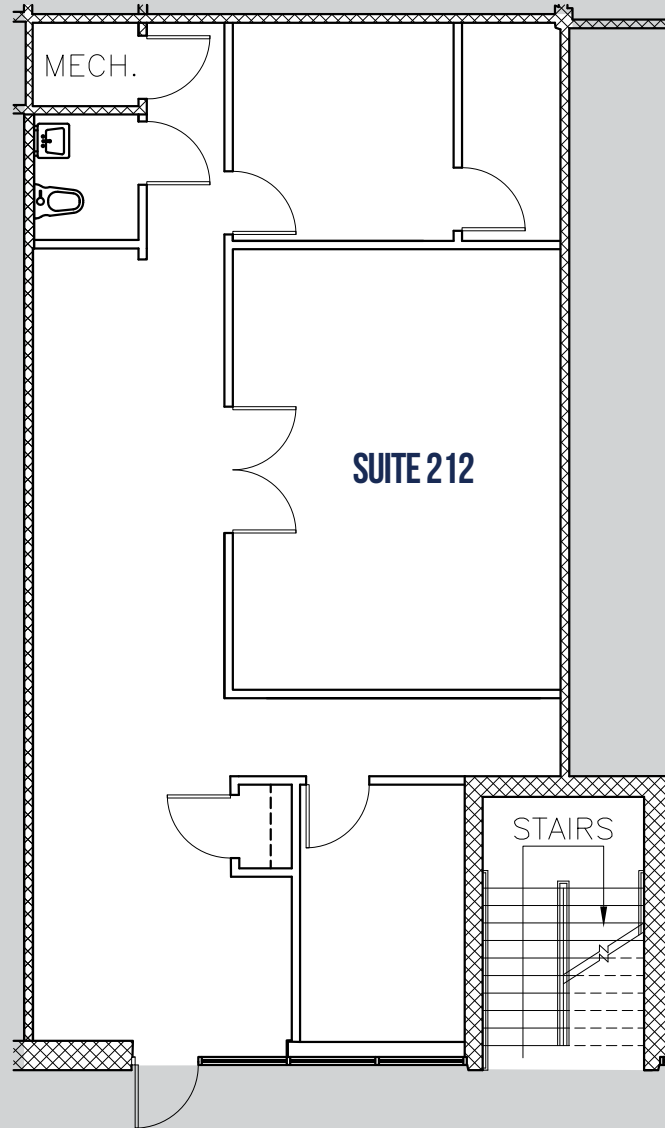
► SUITES 206, 207, 213 & 214: 5,121 SF

# FOR LEASE

**B** BALTIMORE COUNTY, MD

# 3102 LORD BALTIMORE DR

EXECUTIVE PARK WEST | 3100-3300 LORD BALTIMORE DRIVE | WINDSOR MILL, MD 21244



.....  
**AVAILABLE**

▶ SUITE 212: 1,221 SF

.....

# 3100-3102 LORD BALTIMORE DR

EXECUTIVE PARK WEST | 3100-3300 LORD BALTIMORE DRIVE | WINDSOR MILL, MD 21244

# MAP



## DISTANCE TO:

- CMS: 2 Miles
- SSA: 3 Miles
- BWI: 15 Miles
- I-695 & I-70 Interchange: 3 Miles