

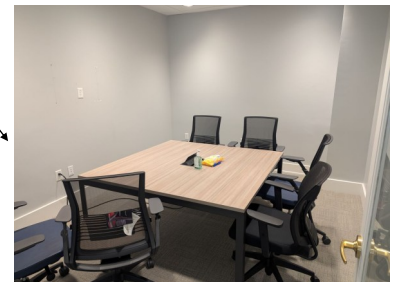
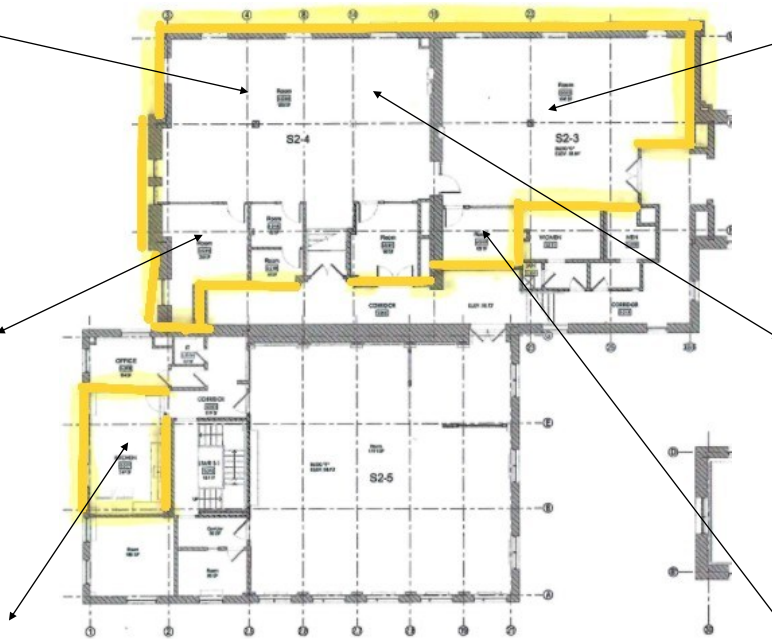
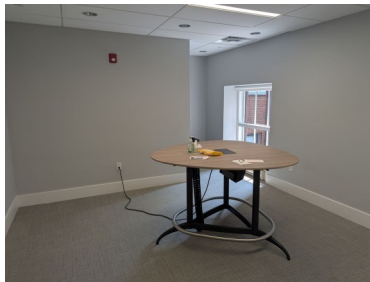
# 3,912 RSF office suite for lease | East Cambridge

Location between Kendall Square and Cambridge Crossing. Easy parking (metered, garage parking).



12+ minute drive to Logan. 0.2 mile to the Lechmere MBTA T station on the green line. Free EZ-Ride shuttle.

**43 Thorndike St (2-3 & 2-4)**



Combination of Suite 2-3 (1,547 RSF) and Suite 2-4 (2,365 RSF)  
4 offices / meeting rooms. 2 open areas. Shared kitchenette

Patrick Verbeke | KW Commercial | KW Boston NW | Cambridge, MA  
617-230-3638 | Patrick@ValtiRealEstate.com | ValtiCommercial.com

