

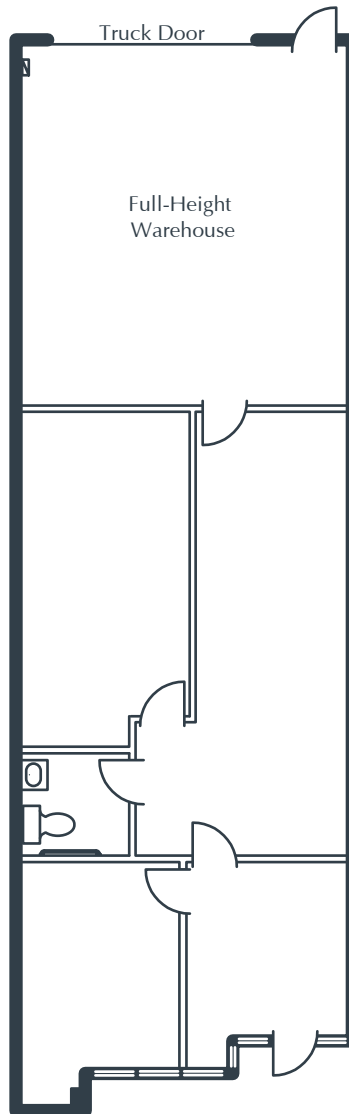
MISSION VIEJO COMMERCE PARK

23392 Madero, Suite D
Mission Viejo, CA

1,360 Square Feet

\$1.65 SF/MO

Triple Net



NOTES

- Reception
- Window Office
- Interior Office
- Restroom
- Large Open Work Area
- Ground-Level Truck Door
- Approximately 608 sq. ft. of Full-Height Warehouse
- Part of a Professionally Managed Business Park

Created by Olen Commercial Realty Corp., 2022.
Information is not to be published or copied without
written approval. Square footage and floor plans are
estimates and should be separately verified. All rates,
terms, floor plans, and building facts are subject to
change without notice.

ea 09.08.2025

ELLYSSA DERRY

Senior Leasing Director
949.719.7204
ederry@olen.com



Seven Corporate Plaza
Newport Beach, CA
949.644.6536
www.olen.com