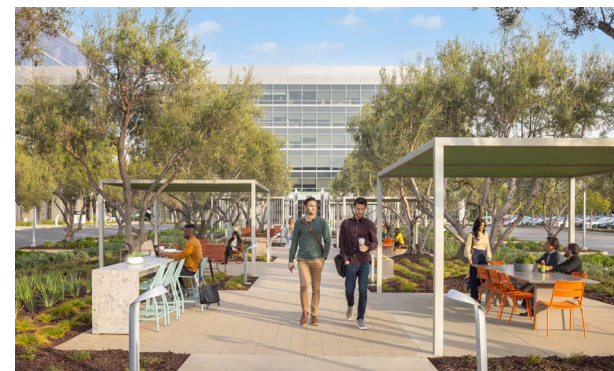


SANTA CLARA GATEWAY

2600 Great America Way, Suite 301
Santa Clara, CA
±27,842 SF



WORKPLACE HIGHLIGHTS

WORKSPACE

- Certified LEED® Gold by U.S. Green Building Council & ENERGY STAR® by U.S. Environmental Protection

WORKDAY CONVENIENCES

- Energize at the premier KINETIC fitness center featuring cardio and strength training, stretching areas, studio with group-led aerobics, locker rooms, and an outdoor sports court where you can host team building events
- Conference Center and Lounge offer 6,951 sq. ft. of meeting/training space, and a game room - fully equipped with high-tech video teleconferencing camera screens, and complimentary WiFi - a reception area and catering kitchen
- On-site dining at Market Café featuring a variety of breakfast and lunch options
- Chargepoint EV stations throughout

AREA

- Nearby dining at Santa Clara Square® Marketplace and @First Shopping Center including Chipotle Mexican Grill, Five Guys, Togos, Il Fornaio and many more
- Easy access to Highway 237, I-880, and 101 freeways
- Walking distance to ACE/Amtrak Great America Stations



WIFI ENABLED OUTDOOR WORKSPACE



SPORTS COURT



TECH-ENABLED CONFERENCE CENTER



PREMIER KINETIC PRIVATE FITNESS CENTER



DINING @ SANTA CLARA SQUARE®

WORKPLACE HIGHLIGHTS

MARKET CAFÉ

Market Café combines great food with the latest technology, in a bright, inviting space.

MORE DELICIOUS CHOICES

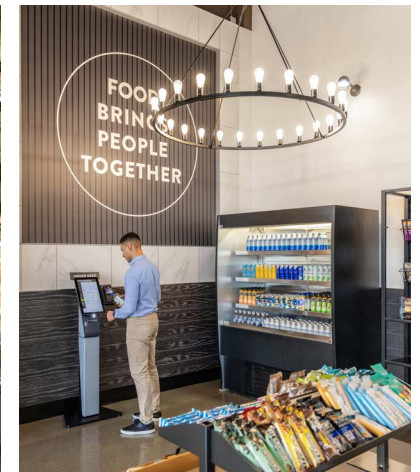
Market Café features a variety of breakfast and lunch options, including:

- Coffee bar serving made-to-order Verve coffee and lattes
- Grab-and-go meals, snacks, beverages and pantry provisions
- Rotating guest restaurants
- Products and treats from Apron Exchange, a program that supports small, women-owned & minority businesses

TECH-FORWARD

Powered by the latest technology, Market Café is designed for a seamless flow with limited contact, so you can conveniently find what you crave.

- Use the on-site digital kiosks to scan and pay for your food and beverages
- With the Foodworks app, you can browse the menu, customize your order, submit your payment and schedule a contactless pickup



BUILDING SPECIFICATIONS

5 AND 6-STORY BUILDINGS

- Highly-efficient glass and architectural aluminum panelized window wall system
- Parking: 3.33:1,000
- Air conditioning provided by two custom rooftop variable air volume units with 100% outside air economizers
- LEED-Gold Certification

LOBBY FEATURES

- Jet Mist granite floors
- Anegre wood wall panels
- Stainless steel elevator doors and frames with programmable destination dispatch system
- Electronic directory system

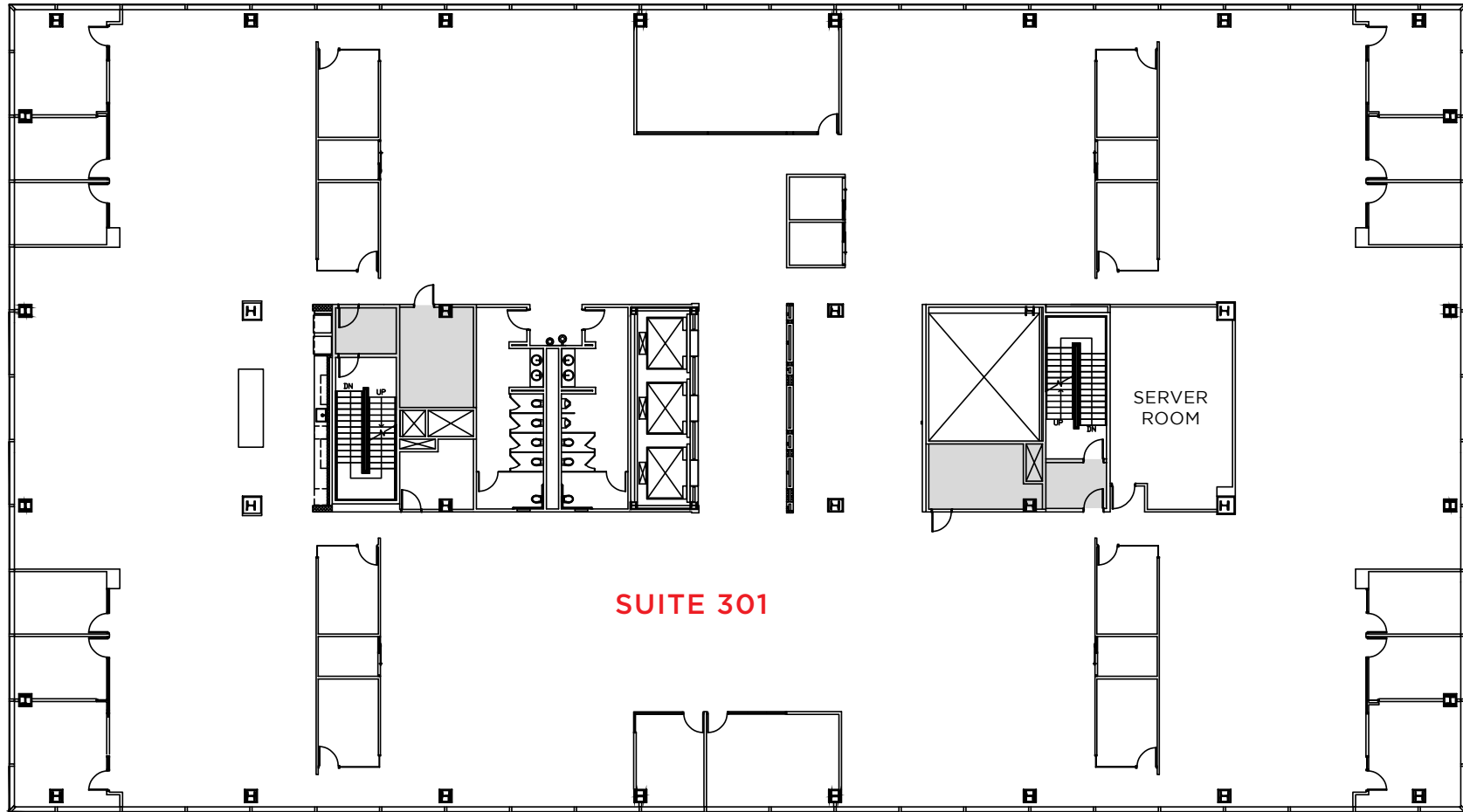
BUILDING DIMENSIONS

- 245' x 125'
- 15' finished ceiling height on 1st floor
- 10' finished ceiling height on floors 4-6
- 10' floor to ceiling glass with column free workspace



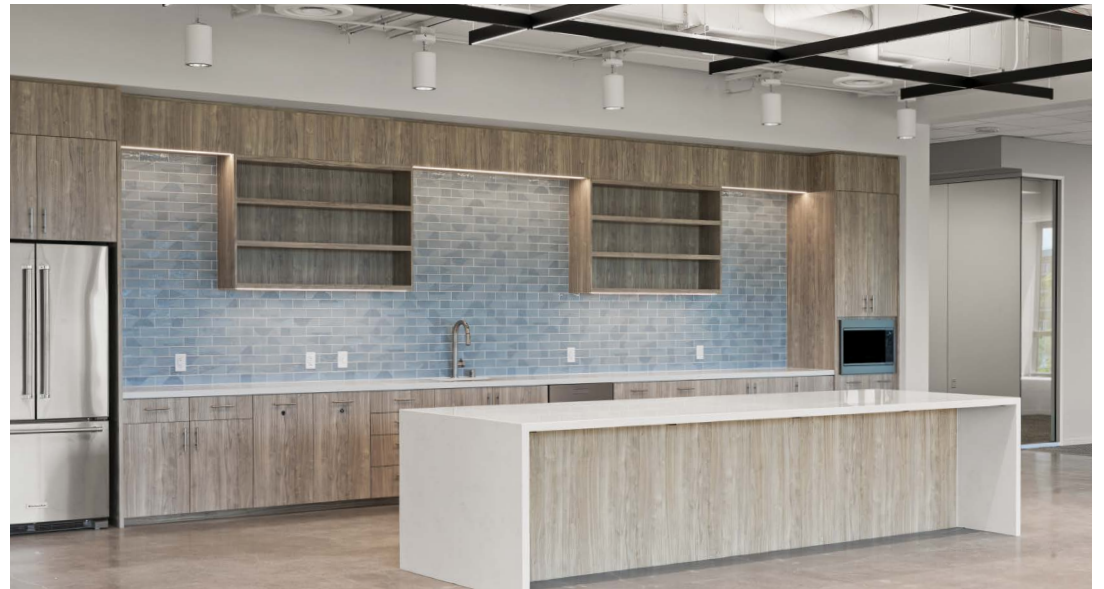
2600 GREAT AMERICA WAY

SUITE 301 • ±27,842 SF



- 17 Private Offices
- 2 Conference Rooms
- 4 Huddle Rooms
- 6 Phone Rooms
- Break Area
- Server Room with 10 Tons of Dedicated Air
- Storage Room
- Open Workspace

SUITE PHOTOS



PRIME SANTA CLARA LOCATION

10
MIN TO
CALTRAIN

4
MIN TO
ACE & VTA

13
MIN TO
BART

DINING • HOTELS • ENTERTAINMENT

@First Shopping Center

Chick-fil-A
Chipotle Mexican Grill
Fish's Wild
Five Guys
Panda Express
Panera Bread
Shan Tandoori Pizza
Rok Steakhouse & Grill

Santa Clara Square® Marketplace

Barebottle Brewing Co.
Bishops Cuts/Color
Carbon Health
Charisma Salon
Chase Bank
Chipotle
CorePower Yoga
Eureka!

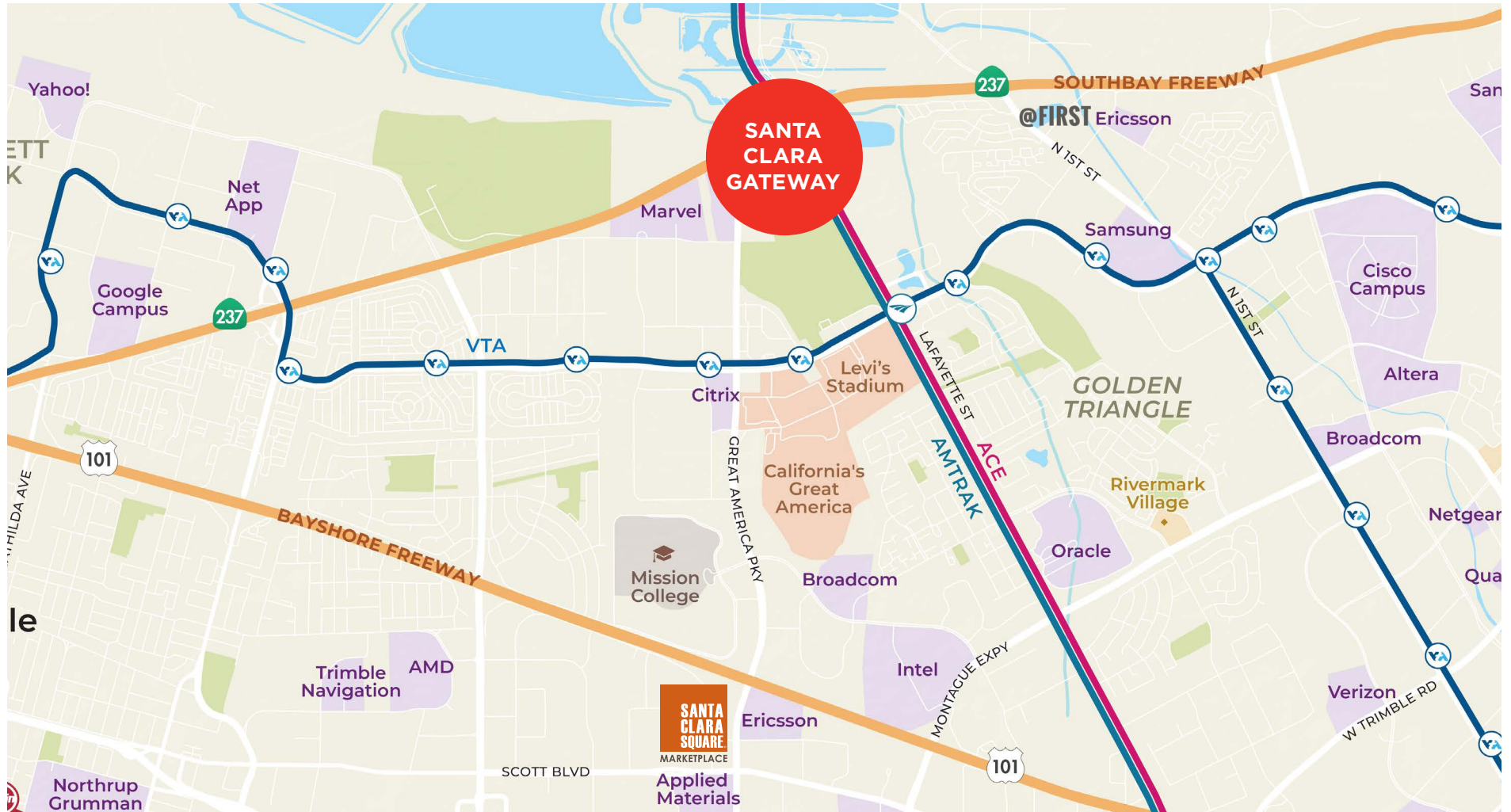
EyeXam Optometry
Fleming's
Il Fornaio
Impress Orthodontics
Opa!
Pacific Catch
Puesto
Sephora
Starbucks Coffee
Whole Foods Market

Hotels

Aloft Santa Clara
Hyatt Regency
Santa Clara
Santa Clara Marriott

Entertainment/Recreation

Santa Clara Convention Center
San Francisco 49ers Stadium
Santa Clara Square® Marketplace
@First Shopping Center





- Bike Locker
- Cafe/Restaurant
- Conference Center
- Customer Resource Center
- EV Charging
- Game Room
- KINETIC Fitness Center
- Lounge
- Outdoor Workspace (WiFi Enabled)
- Sports Court

OWNED AND MANAGED BY

FOR LEASING



Todd Hedrick
 CA Lic. 1152266
 408.330.0126
 thedrick@irvinecompany.com



Mark Schmidt
 CA Lic. 00872826
 408.460.5295
 mark.schmidt@cbre.com

Will Schmidt
 CA Lic. 01988485
 408.453.7408
 will.schmidt@cbre.com

Christian Marent
 CA Lic. 00932744
 408.453.7422
 christian.marent@cbre.com

©2024 CBRE, Inc. and Irvine Management Company. All rights reserved. This information has been obtained from sources believed reliable, but CBRE and Irvine Management Company make no representation or warranty as to the accuracy or completeness of such data and it should be independently verified by prospective tenants. You should conduct a careful, independent investigation of the property and verify all information. Any reliance on this information is solely at your own risk. All renderings, floor plans, pictures shown are for information and illustration purposes only and are subject to change. Images may not be to scale. May not show final material and finishes. Products, features, and amenities subject to availability. CBRE and the CBRE logo are service marks of CBRE, Inc. All other marks displayed on this document are the property of their respective owners, and the use of such logos does not imply any affiliation with or endorsement of CBRE. Photos herein are the property of their respective owners. Use of these images without the express written consent of the owner is prohibited. The Sunwave, Irvine Company and Santa Clara Square are registered trademarks of Irvine Management Company. All properties are offered for lease through Irvine Management Company, a licensed real estate broker DRE LIC. #02041810.