

OFFICE SPACE FOR LEASE

15335 Morrison Street | Sherman Oaks



For more information
please contact:

Todd Wuschnig

Principal
818.933.0301
twuschnig@lee-re.com
DRE#01367230

Stacy Vierheilg-Fraser

Principal
818.933.0313
svierheilg@lee-re.com
DRE#00986794



COMMERCIAL REAL ESTATE SERVICES

Lee & Associates® - LA North/Ventura, Inc. • Corporate ID #01191898
A Member of the Lee & Associates® Group of Companies
15250 Ventura Blvd., Suite 100 • Sherman Oaks, CA 91403
P:818.986.9800 F:818.933.0405 • www.lee-associates.com

AVAILABLE

Suite	Size
150	±1,556 SF
237	±824 SF

LEASE RATE

\$2.35/RSF FSG

PARKING

3/1000 Surface Spaces — **FREE PARKING**

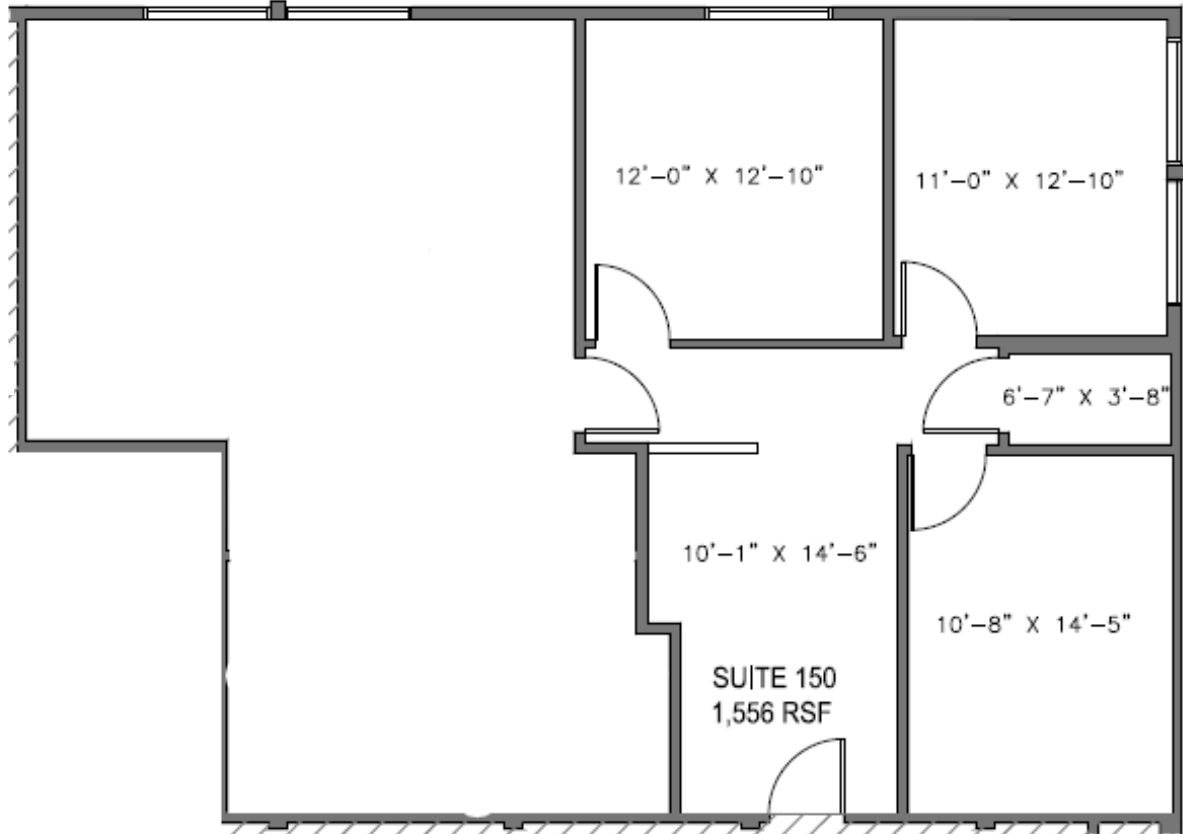
PROPERTY HIGHLIGHTS

- » Free visitor parking & additional street parking
- » HVAC Hours: 5am to 10pm; 7 Days a Week
- » New Common Area Renovations
- » On-Site Cafe
- » Newly remodeled common areas
- » Tree-lined property
- » Sit down lobby
- » Immediate access to the 101 & 405 Freeways
- » Walking distance to the Sherman Oaks Galleria

OFFICE SPACE FOR LEASE

15335 Morrison Street | Sherman Oaks

SUITE 150 FLOOR PLAN



NOT TO SCALE

For more information please contact:

Todd Wuschnig

Principal

818.933.0301

twuschnig@lee-re.com

DRE#01367230

Stacy Vierheilg-Fraser

Principal

818.933.0313

svierheilg@lee-re.com

DRE#00986794



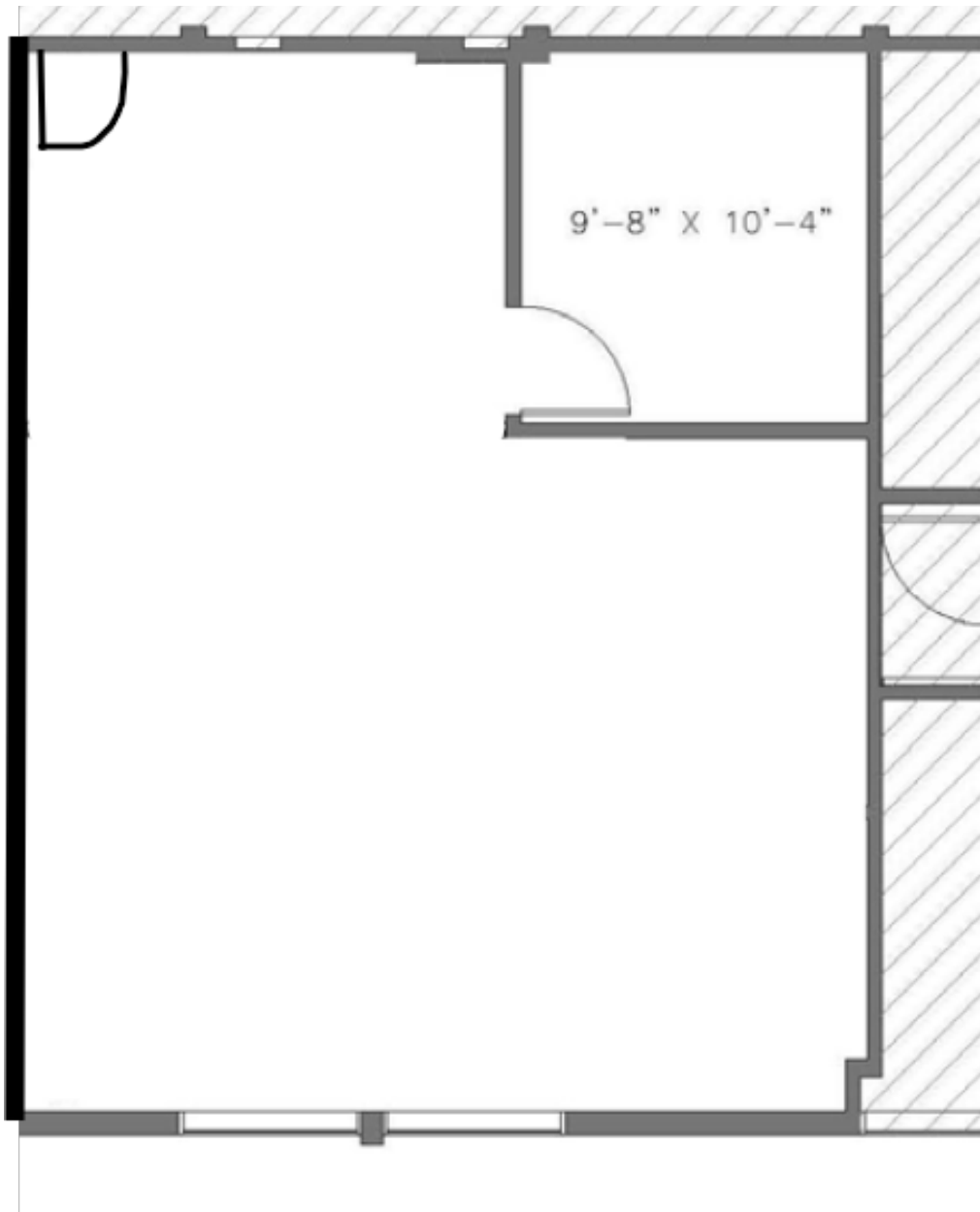
Lee & Associates® - LA North Ventura, Inc. • Corporate ID #01191898
A Member of the Lee & Associates® Group of Companies
15250 Ventura Blvd., Suite 100 • Sherman Oaks, CA 91403
P:818.986.9800 F:818.933.0405 • www.lee-associates.com

No warranty or representation is made to the accuracy of the foregoing information. Terms of sale or lease and availability are subject to change or withdrawal without notice.

OFFICE SPACE FOR LEASE

15335 Morrison Street | Sherman Oaks

SUITE 237 FLOOR PLAN



NOT TO SCALE

For more information please contact:

Todd Wuschmig

Principal

818.933.0301

twuschmig@lee-re.com

DRE#01367230

Stacy Vierheilig-Fraser

Principal

818.933.0313

svierheilig@lee-re.com

DRE#00986794



Lee & Associates® - LA North Ventura, Inc. • Corporate ID #01191898
A Member of the Lee & Associates® Group of Companies
15250 Ventura Blvd., Suite 100 • Sherman Oaks, CA 91403
P:818.986.9800 F:818.933.0405 • www.lee-associates.com

No warranty or representation is made to the accuracy of the foregoing information. Terms of sale or lease and availability are subject to change or withdrawal without notice.

OFFICE SPACE FOR LEASE

15335 Morrison Street | Sherman Oaks

SUITE PHOTOS



For more information please contact:

Todd Wuschnig

Principal

818.933.0301

twuschnig@lee-re.com

DRE#01367230

Stacy Vierheilg-Fraser

Principal

818.933.0313

svierheilg@lee-re.com

DRE#00986794



Lee & Associates® - LA North Ventura, Inc. • Corporate ID #01191898
A Member of the Lee & Associates® Group of Companies
15250 Ventura Blvd., Suite 100 • Sherman Oaks, CA 91403
P:818.986.9800 F:818.933.0405 • www.lee-associates.com

No warranty or representation is made to the accuracy of the foregoing information. Terms of sale or lease and availability are subject to change or withdrawal without notice.

OFFICE SPACE FOR LEASE

15335 Morrison Street | Sherman Oaks

PROPERTY PHOTOS



For more information please contact:

Todd Wuschnig

Principal

818.933.0301

twuschnig@lee-re.com

DRE#01367230

Stacy Vierheilg-Fraser

Principal

818.933.0313

svierheilg@lee-re.com

DRE#00986794



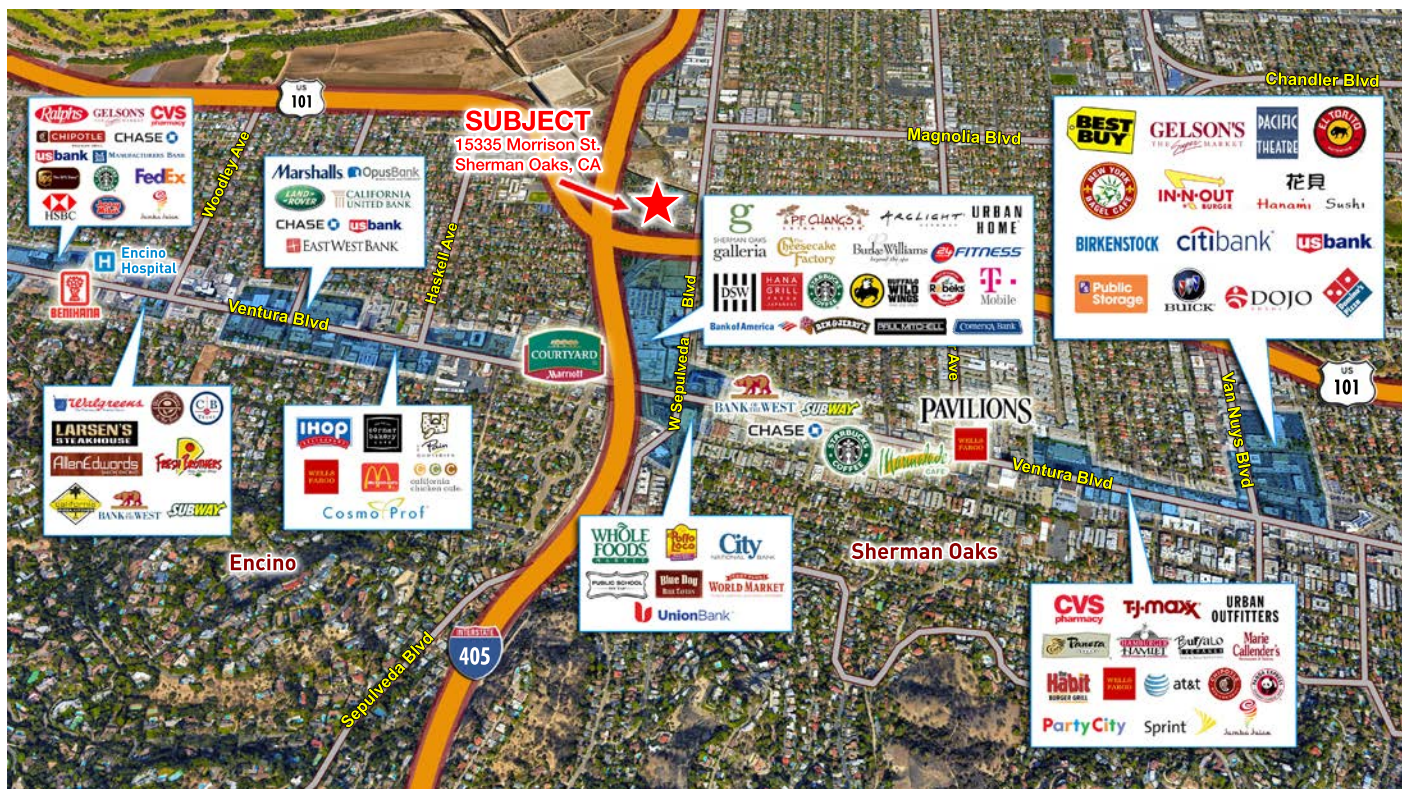
Lee & Associates® - LA North Ventura, Inc. • Corporate ID #01191898
A Member of the Lee & Associates® Group of Companies
15250 Ventura Blvd., Suite 100 • Sherman Oaks, CA 91403
P:818.986.9800 F:818.933.0405 • www.lee-associates.com

No warranty or representation is made to the accuracy of the foregoing information. Terms of sale or lease and availability are subject to change or withdrawal without notice.

OFFICE SPACE FOR LEASE

15335 Morrison Street | Sherman Oaks

AERIAL & AMENITIES MAP



For more information please contact:

Todd Wuschig

Principal

818.933.0301

twuschig@lee-re.com

DRE#01367230

Stacy Vierheilig-Fraser

Principal

818.933.0313

svierheilig@lee-re.com

DRE#00986794



COMMERCIAL REAL ESTATE SERVICES

Lee & Associates® - LA North Ventura, Inc. • Corporate ID #01191898
 A Member of the Lee & Associates® Group of Companies
 15250 Ventura Blvd., Suite 100 • Sherman Oaks, CA 91403
 P:818.986.9800 F:818.933.0405 • www.lee-associates.com

No warranty or representation is made to the accuracy of the foregoing information. Terms of sale or lease and availability are subject to change or withdrawal without notice.