



Colliers



South Bay Professional Building

Thacher Goodwin

Vice President
License No. 01758949
+1 310 321 1821
thacher.goodwin@colliers.com

Carter Rudnick

Senior Associate
License No. 01978170
+1 310 321 1835
carter.rudnick@colliers.com

2141 Rosecrans Ave, Suite 1120
El Segundo, CA 90245
P: +1 310 787 1000
F: +1 310 787 6869
colliers.com

3655 Torrance Blvd Torrance, CA 90503

For Lease > Office Spaces

Property Highlights

- >> Close Proximity to City Hall & Torrance Financial District
- >> Walking distance to Del Amo Mall, restaurants, and other amenities
- >> High identity along Torrance Blvd.
- >> Across the street from Marriott Hotel
- >> Easy Access to 405 Freeway

Asking Rate

>> \$2.35 per RSF - Full Service Gross

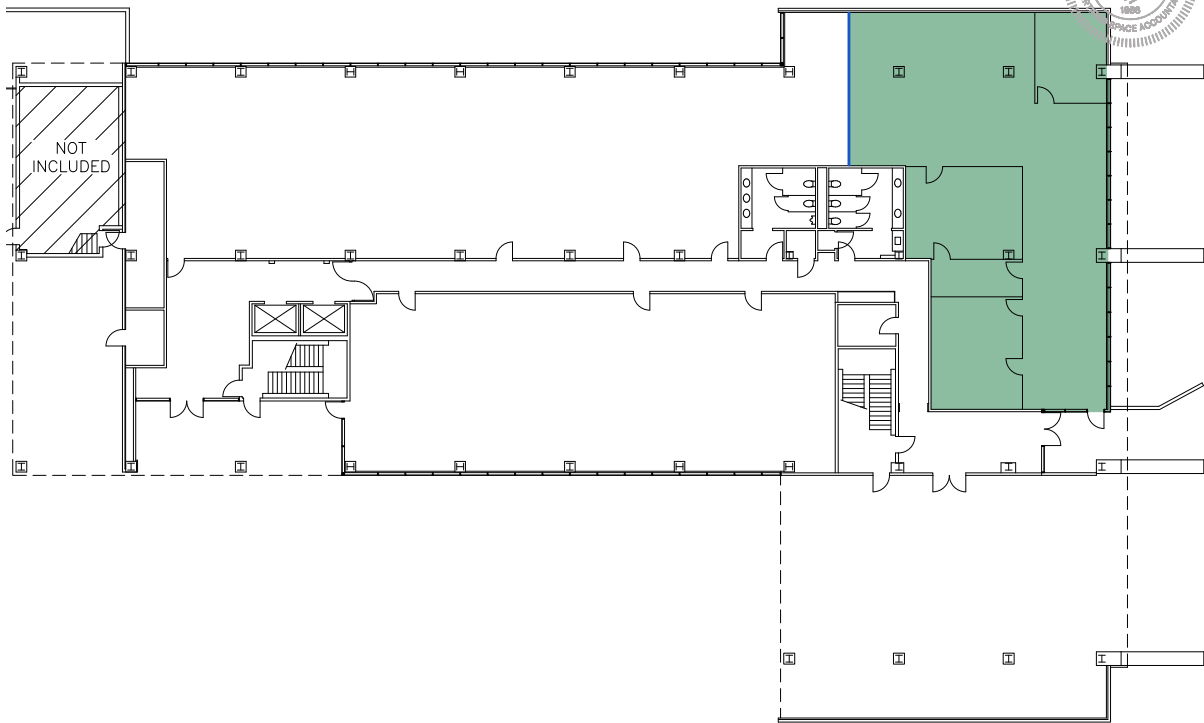
Copyright © 2025 Colliers International. Information herein has been obtained from sources deemed reliable, however its accuracy cannot be guaranteed. The user is required to conduct their own due diligence and verification.

For Lease

Suite 100	3,124 RSF*
Suite 410	998 RSF*
Suite 425	4,407 RSF* (avail 9/1)
Suite 435	1,690 RSF* (avail 10/1)
Suite 470	1,028 RSF*

3655 TORRANCE BLVD, TORRANCE, CA 90503

SUITE 100 - 3,124 RSF



Thacher Goodwin

Vice President
 License No. 01758949
 +1 310 321 1821
 thacher.goodwin@colliers.com

Carter Rudnick

Senior Associate
 License No. 01978170
 +1 310 321 1835
 carter.rudnick@colliers.com

Total USF	SSI RSF
2,856.86	3,123.68

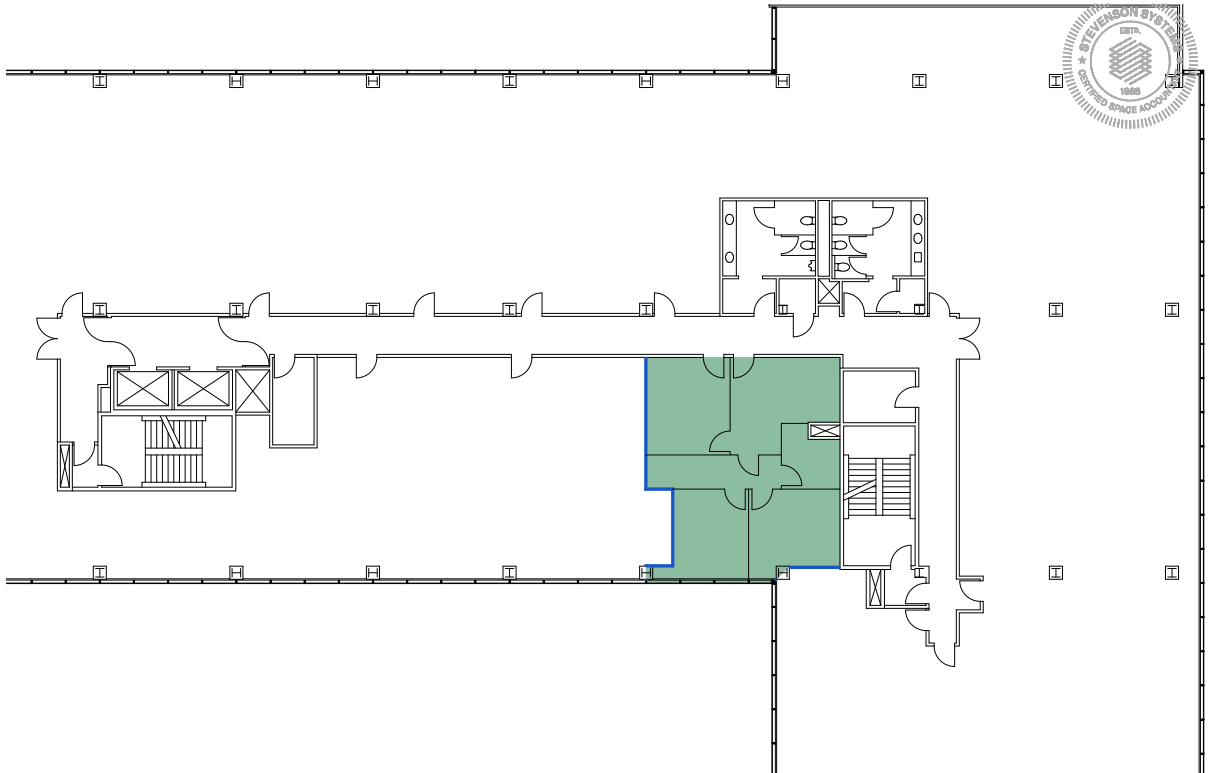


**Stevenson
Systems**

* All SF on attached are approximations and subject to Landlord's verifications.

For Lease

3655 TORRANCE BLVD, TORRANCE, CA 90503 SUITE 410 - 998 RSF



Thacher Goodwin
Vice President
License No. 01758949
+1 310 321 1821
thacher.goodwin@colliers.com

Carter Rudnick
Senior Associate
License No. 01978170
+1 310 321 1835
carter.rudnick@colliers.com

Total USF	SSI RSF
862.95	997.99

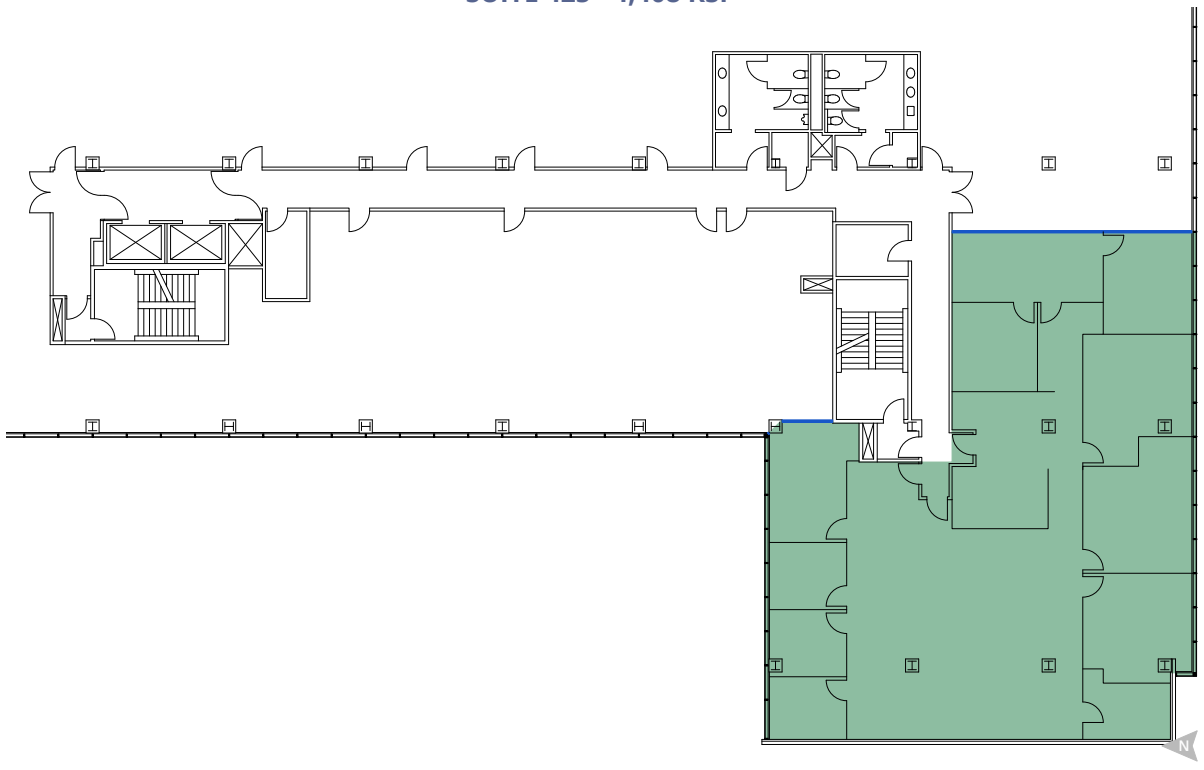


**Stevenson
Systems**

* All SF on attached are approximations and subject to Landlord's verifications.

For Lease

3655 TORRANCE BLVD, TORRANCE, CA 90503 SUITE 425 - 4,408 RSF



Thacher Goodwin

Vice President
License No. 01758949
+1 310 321 1821
thacher.goodwin@colliers.com

Carter Rudnick

Senior Associate
License No. 01978170
+1 310 321 1835
carter.rudnick@colliers.com

Total USF	SSI RSF
3,811.17	4,407.55

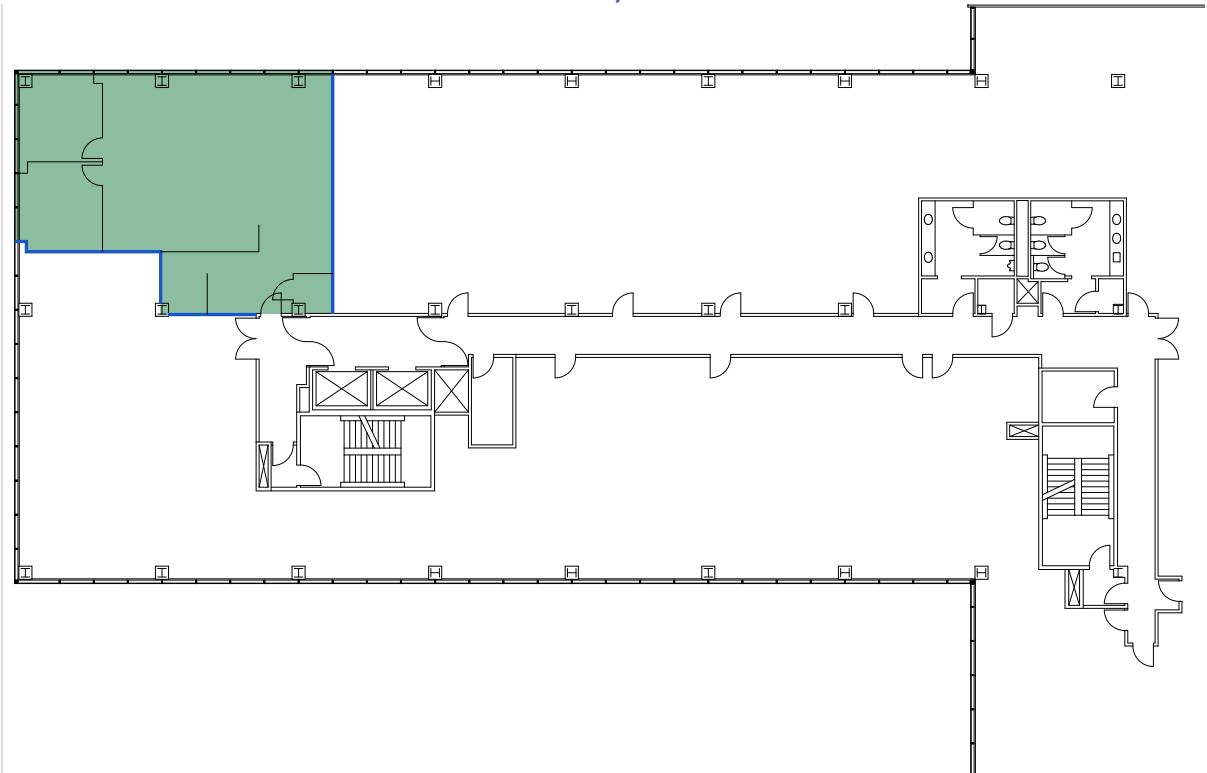


**Stevenson
Systems**

* All SF on attached are approximations and subject to Landlord's verifications.

For Lease

3655 TORRANCE BLVD, TORRANCE, CA 90503
SUITE 435 - 1,690 RSF



Thacher Goodwin
Vice President
License No. 01758949
+1 310 321 1821
thacher.goodwin@colliers.com

Carter Rudnick
Senior Associate
License No. 01978170
+1 310 321 1835
carter.rudnick@colliers.com

Total USF	SSI RSF
1,461.07	1,689.71

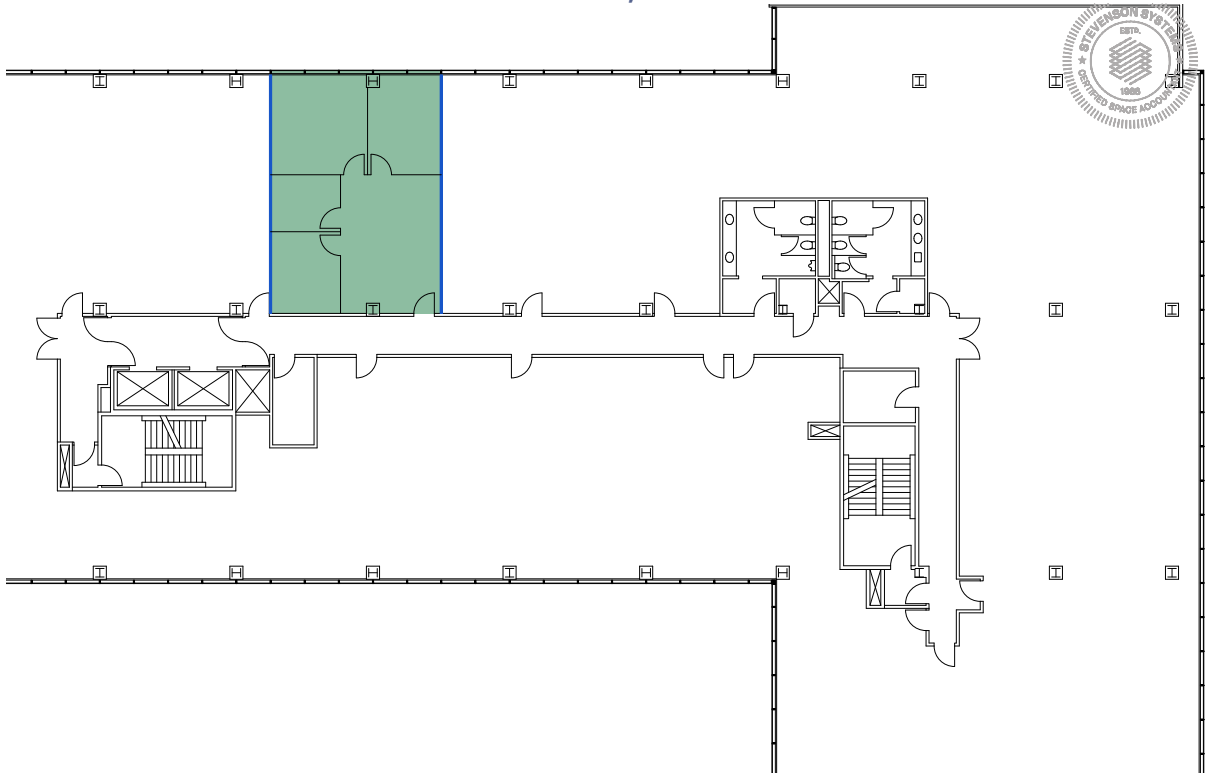


**Stevenson
Systems**

* All SF on attached are approximations and subject to Landlord's verifications.

For Lease

3655 TORRANCE BLVD, TORRANCE, CA 90503 SUITE 470 - 1,028 RSF



Thacher Goodwin

Vice President
License No. 01758949
+1 310 321 1821
thacher.goodwin@colliers.com

Carter Rudnick

Senior Associate
License No. 01978170
+1 310 321 1835
carter.rudnick@colliers.com

Total USF	SSI RSF
888.80	1,027.88



**Stevenson
Systems**

* All SF on attached are approximations and subject to Landlord's verifications.

Building Standard Finishes and Photos

