



GROUND FLOOR BOUTIQUE OFFICE
SPACE FOR LEASE - FULLY REMODELED
IN THE HEART OF BEVERLY GROVE

8150 BEVERLY BLVD
LOS ANGELES, CA 90048



SPACE

±1,500 RSF

RATE

\$5,950/MONTH, GROSS

PARKING

3 SPACES

DELIVERY

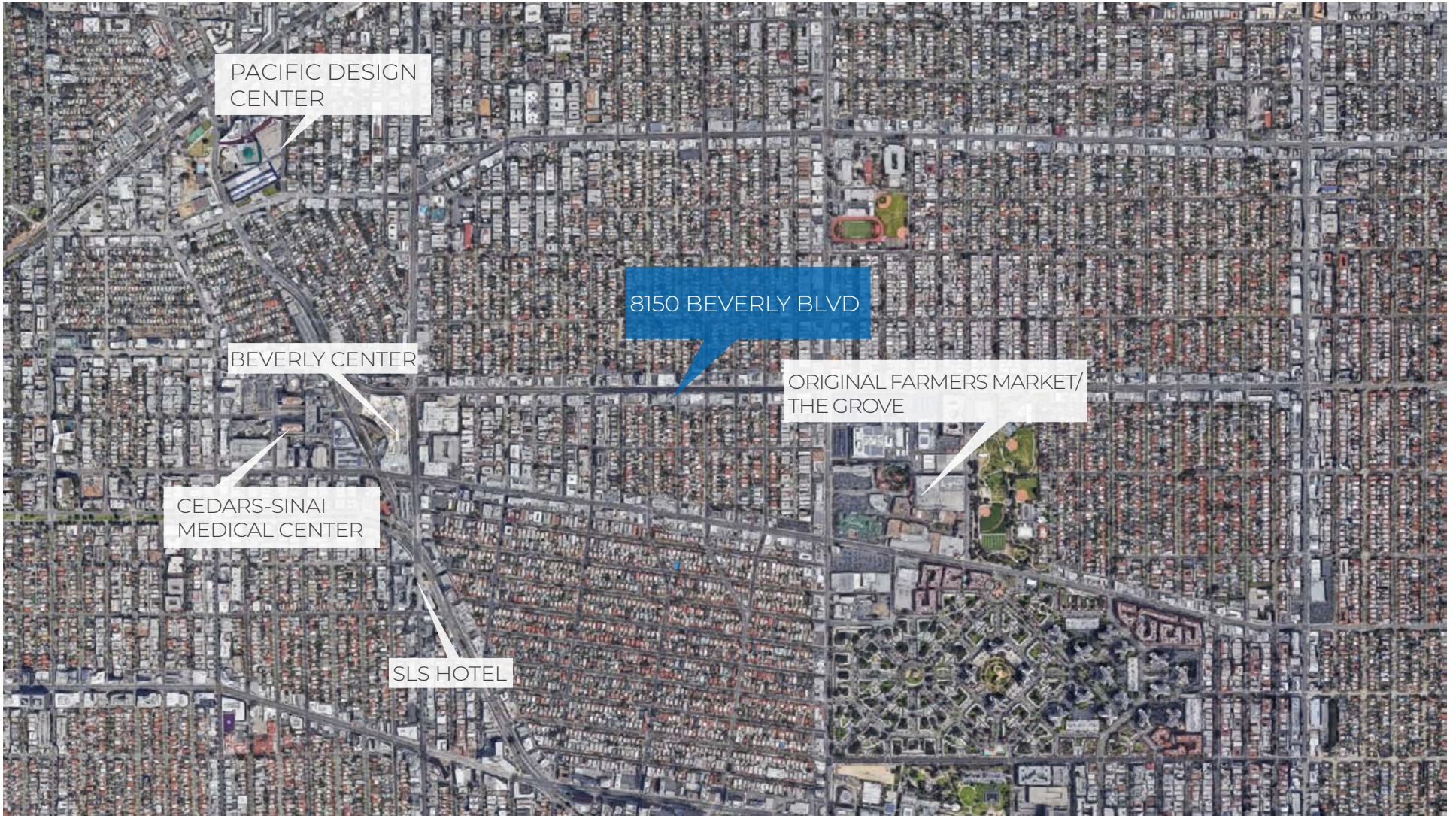
AVAILABLE NOW



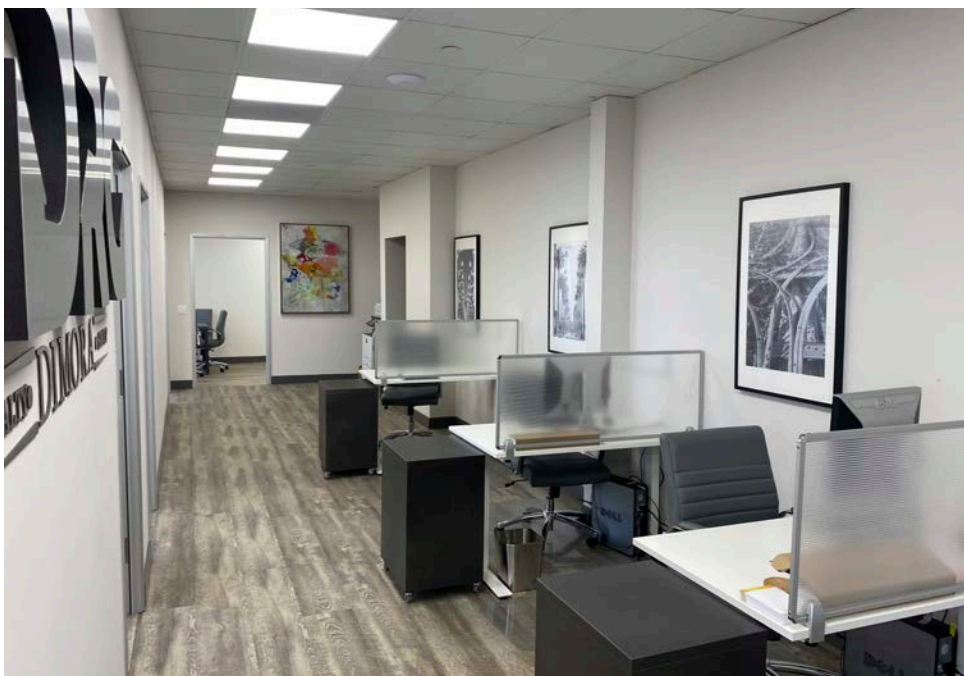
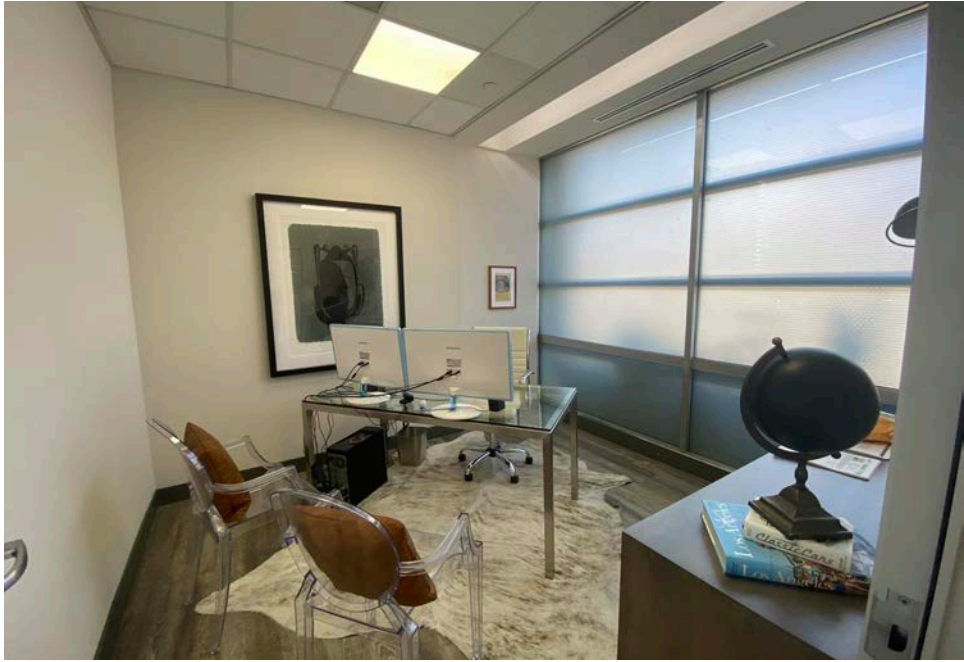
[CLICK HERE FOR
PROPERTY VIDEO](#)

- COMPLETELY REMODELED GROUND FLOOR OFFICE SPACE IN THE HEART OF BEVERLY GROVE
- 4 OFFICES PLUS A CONFERENCE ROOM, OPEN BULLPEN SPACE, COPY ROOM AND KITCHENETTE
- SECURE BUILDING - PERSONALIZED CODE ENTRANCE AND ONSITE SECURITY - VERY RARE FOR SMALL BUILDING
- 3 PARKING SPACES COME WITH THE SPACE PLUS GREAT STREET PARKING
- FURNITURE CAN BE MADE AVAILABLE

These materials are based on information and content provided by others, which we believe are accurate. No guarantee, warranty or representation is made by Commercial Asset Group, Inc. or its personnel. All interested parties must independently verify accuracy and completeness. As well, any projections, assumptions, opinion, or estimates are used for example only and do not represent the current or future performance of the identified property. Your tax, financial, legal and toxic substance advisors should conduct a careful investigation of the property and its suitability for your needs, including land use limitations. The property is subject to prior lease, sale, change in price, or withdrawal from the market without notice.



AERIAL



ADDITIONAL PHOTOS



COMMERCIAL
ASSET GROUP

8150

DAVID ASCHKENASY

EXECUTIVE VICE PRESIDENT

P 310.272.7381

E DAVIDA@CAGRE.COM

LIC. 01714442

COMMERCIAL ASSET GROUP

1801 CENTURY PARK EAST, STE 1550

LOS ANGELES, CA 90067

P 310.275.8222 F 310.275.8223

WWW.CAGRE.COM LIC. 01876070