

3 SUITES AVAILABLE !

Located in the established South Lakeland Office Park at the signalized intersection of S. Florida Avenue and Fitzgerald Road, offering strong visibility, easy access, and a professional business environment. The property benefits from steady traffic along one of Lakeland's main commercial corridors and quick connectivity to the Polk Parkway, I-4, and surrounding business markets.



180 FITZGERALD RD. SUITE 1-2-3

Lakeland, FL 33813



Suite 1:
1395 SF/1st floor + 1005 SF/2nd
floor
Suite 2:
1365 SF/ 1st floor + 840 SF/2nd
Floor
Suite 3:
855 SF 1st floor.

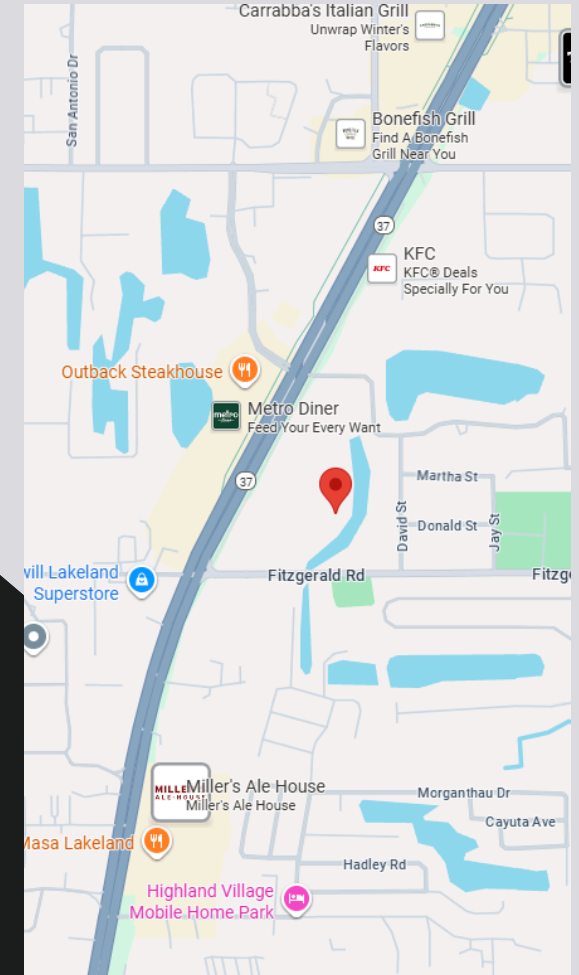
MARKET VALUE

Suites from 855 SF
to 2400 SF



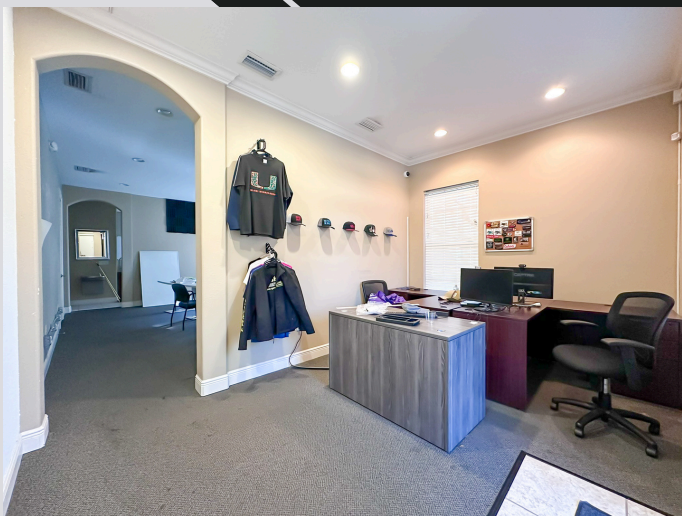
📍 180 FITZGERALD RD,
SUITES 1,2 & 3

- Currently 2 of the suites are connected and can be leased separately.
- Prime South Lakeland Office Park Signalized intersection at S. Florida Ave (SR-37) & Fitzgerald Rd
- High visibility along major commercial corridor
- Minutes to Polk Parkway (SR-570) with fast access to I-4
- Surrounded by professional, medical, and administrative offices
- Close to Lakeside Village retail, dining, and business services
- Convenient access for clients and employees across Lakeland & Polk County
- Located in a stable, high-demand commercial district



Contact Us

info@Lorio.com
+1 (863)-680-1628
www.lorio.com

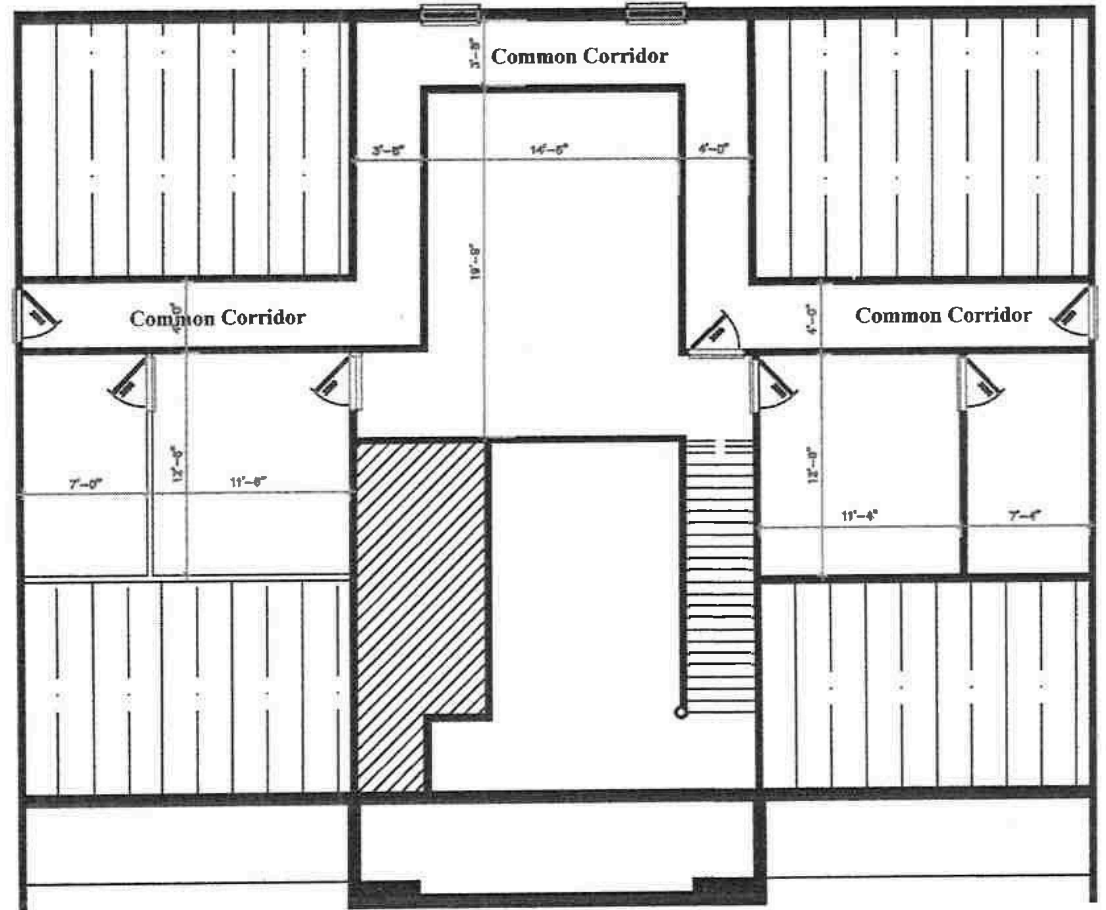
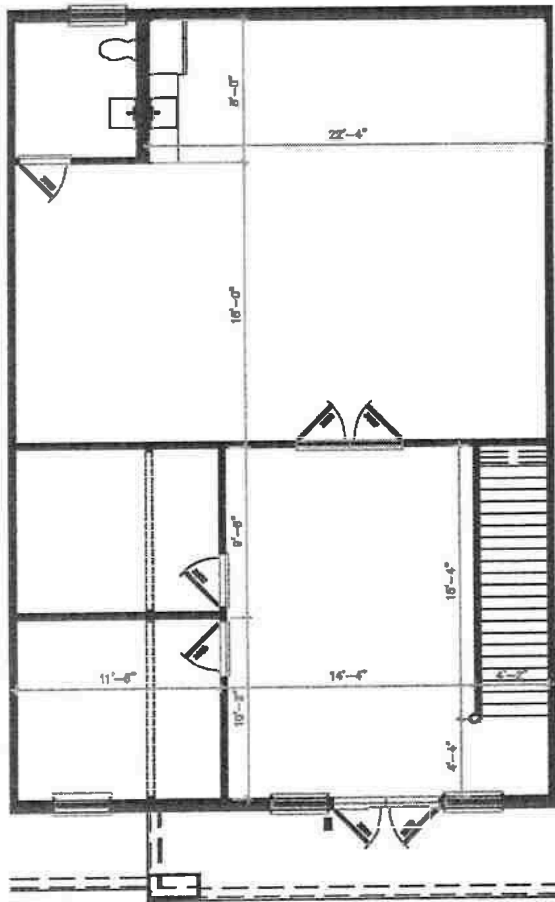


GROUND FLOOR

1365 SQ/FT

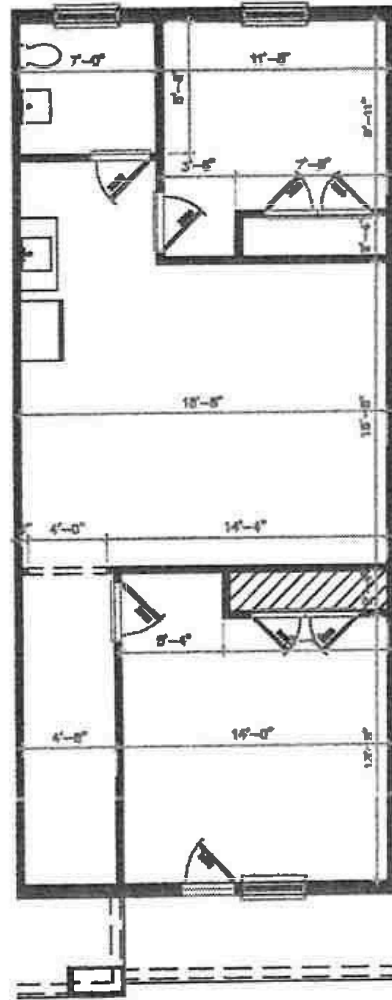
SECOND FLOOR

840 SQ/FT



180 FITZGERALD ROAD
SUITE 2

855 SQ/FT



180 FITZGERALD ROAD
SUITE 3