



# CROWNSVILLE TOWN STATION

1321 GENERALS HIGHWAY | CROWNSVILLE, MARYLAND 21032

FOR  
LEASE



**MACKENZIE**

COMMERCIAL REAL ESTATE SERVICES, LLC

# PROPERTY OVERVIEW

## HIGHLIGHTS:

- Professional office building with easy access to Baltimore and Annapolis
- Charming local neighborhood
- Monument signage for tenants
- Hands-on management
- Direct entry
- Private restroom
- Modern finishes

AVAILABLE:

SUITE 102: 1,604 RSF

BUILDING SIZE:

21,069 SF

PARKING RATIO:

5.5/1,000 SF

ZONING:

C2 (COMMERCIAL OFFICE DISTRICT)

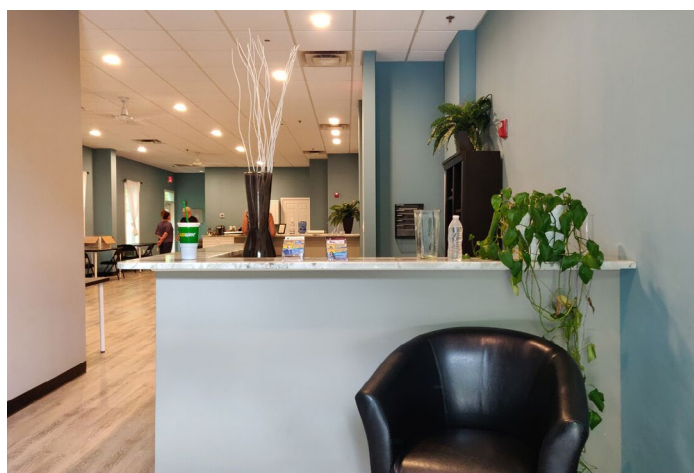
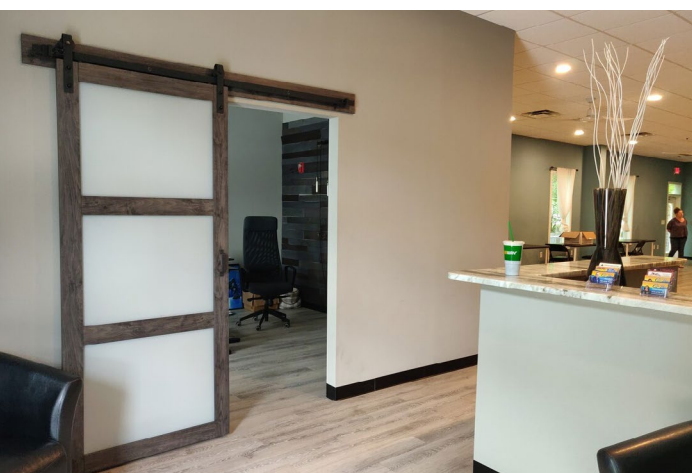
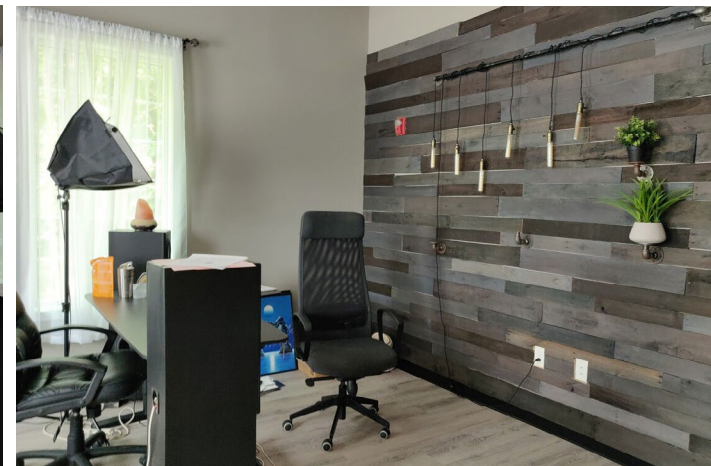
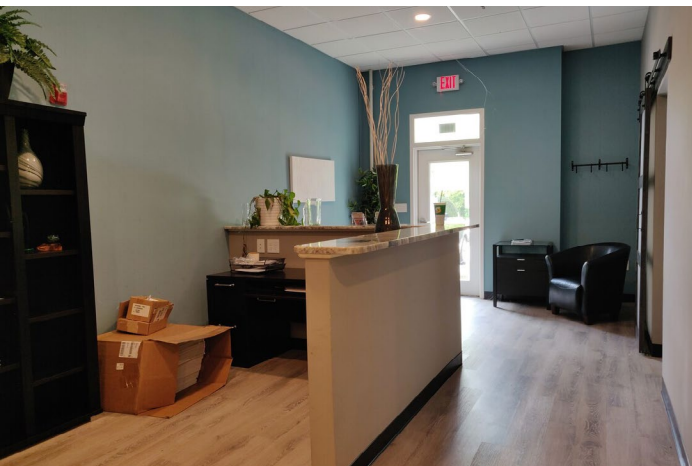
PRICE:

\$21.00/SF, NNN



GOOGLE STREET VIEW

# INTERIOR PHOTOS



# DEMOGRAPHICS

2024

RADIUS:

1 MILE

3 MILES

5 MILES

## RESIDENTIAL POPULATION



316

6,288

40,114

## DAYTIME POPULATION



609

2,848

67,985

## AVERAGE HOUSEHOLD INCOME



\$214,711

\$174,419

\$153,563

## NUMBER OF HOUSEHOLDS



173

4,852

32,720

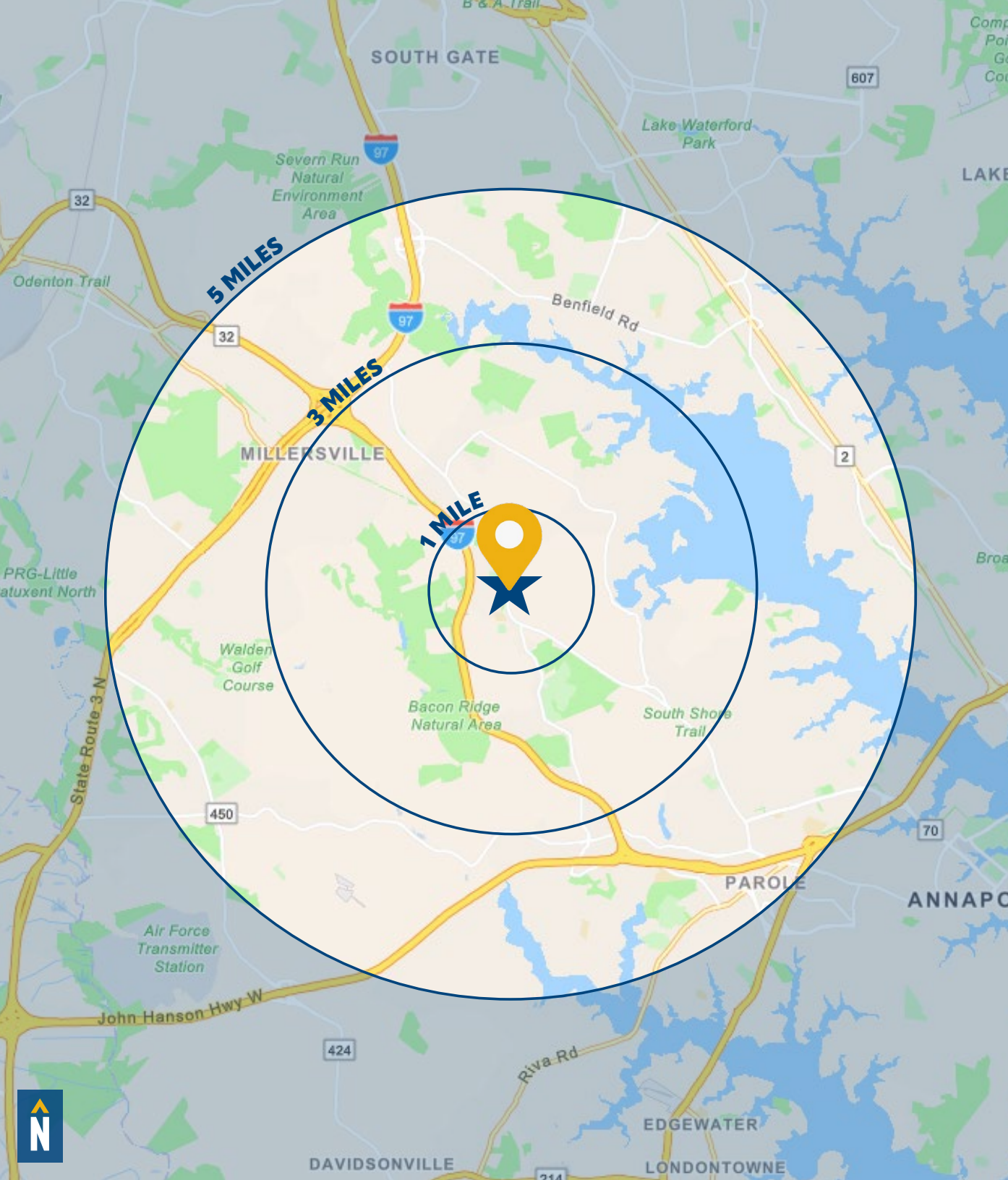
## MEDIAN AGE



48.9

47.6

44.0



# FOR MORE INFO **CONTACT:**

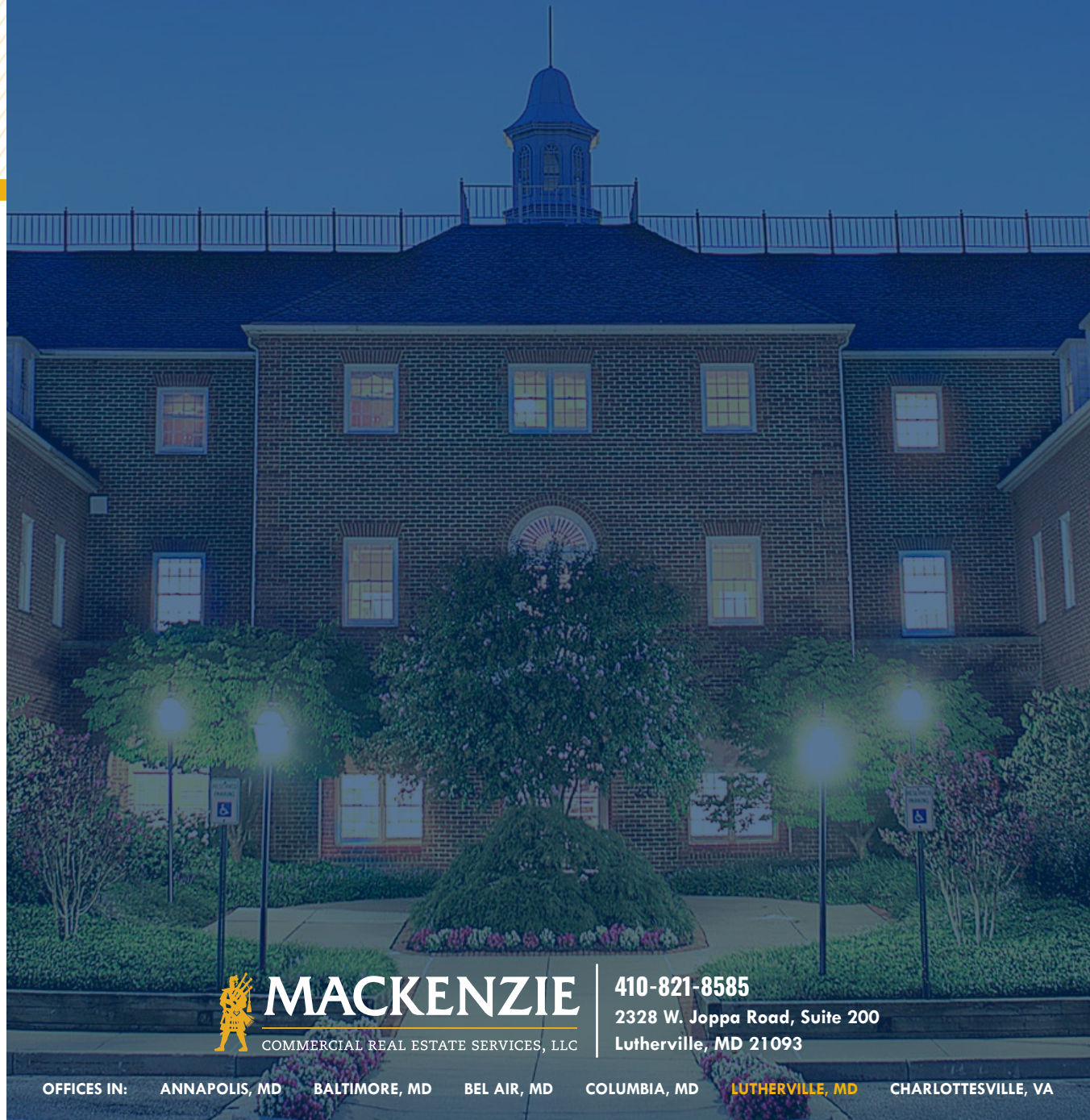


**BETHANY HOBBS**

SENIOR REAL ESTATE ADVISOR

**410.953.0359**

**BHOBBS@mackenziecommercial.com**



**MACKENZIE**

COMMERCIAL REAL ESTATE SERVICES, LLC

**410-821-8585**

**2328 W. Joppa Road, Suite 200  
Lutherville, MD 21093**

OFFICES IN: ANNAPOLIS, MD BALTIMORE, MD BEL AIR, MD COLUMBIA, MD **LUTHERVILLE, MD** CHARLOTTESVILLE, VA

**[www.MACKENZIECOMMERCIAL.com](http://www.MACKENZIECOMMERCIAL.com)**



VISIT **PROPERTY PAGE** FOR MORE INFORMATION.



*No warranty or representation, expressed or implied, is made as to the accuracy of the information contained herein, and same is submitted subject to errors, omissions, change of price, rental or other conditions, withdrawal without notice, and to any specific listing conditions imposed by our principals.*