

18111 VON KARMAN  
AVENUE

# LAKE SHORE



SUITE	RSF	RATE	BUILD-OUT DESCRIPTION	AVAILABILITY
460	2,572	\$3.25 FSG	3 offices, 1 conference room, kitchen, open area	Immediate
500	11,656	\$3.25 FSG	8 offices, 1 conference room, kitchen, copy room, storage room, open area	Immediate
570	6,881	\$3.25 FSG	5 offices, 1 conference room, kitchen, copy room, open area	Immediate
500/570	18,527	\$3.25 FSG	13 offices, 2 conference rooms, 2 kitchens, 2 copy rooms, storage room, reception, open area	Immediate
600	24,649	\$3.50 FSG	34 offices, 8 conference rooms, kitchen, copy room, 2 storage rooms, open area	Immediate
700	24,649	\$3.50 FSG	32 offices, 6 conference rooms, 2 kitchens, 1 service room, 2 copy rooms, 3 storage rooms, open area, furniture available	Immediate
850	6,461	\$3.50 FSG	8 offices, 2 conference rooms, kitchen, storage rooms, copy room, restrooms, open area with 27 cubicles, furniture available	Immediate
900	20,036	\$3.75 FSG	Shell condition	Immediate

**ROBERT LAMBERT**  
949.930.9212  
robert.lambert@cushwake.com  
Lic. No. 01758074

**RICK KAPLAN**  
949.955.7643  
rick.kaplan@cushwake.com  
Lic. No. 00863069

**MAT MAT GILES**  
562.310.2692  
matmat.giles@cushwake.com  
Lic. No. 02181091



# LAKESHORE

18111 VON KARMAN AVENUE

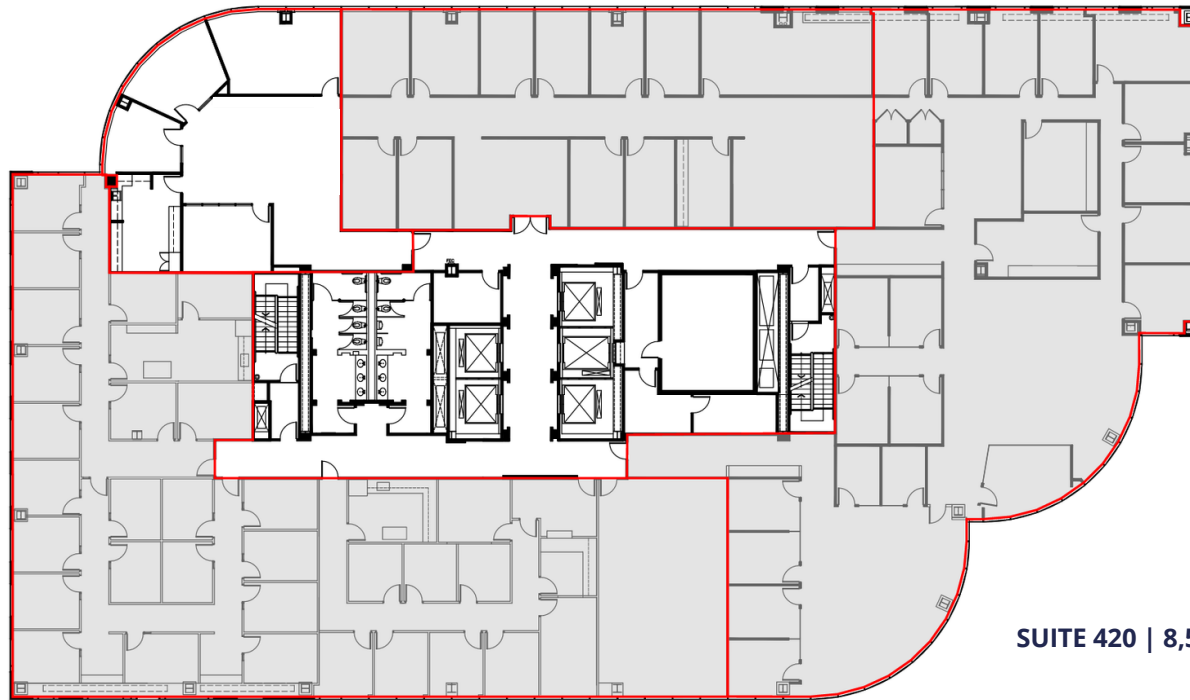
4<sup>th</sup> floor

**"AVAILABLE"**  
SUITE 460 | 2,572 RSF

AIRPORT



SUITE 450 | 4,647 RSF



  
405 FREEWAY

SUITE 420 | 8,574 RSF

SUITE 400 | 8,724 RSF

SCALE: N.T.S.



**RICK KAPLAN**

949.955.7643

rick.kaplan@cushwake.com

Lic. No. 00863069

**ROBERT LAMBERT**

949.930.9212

robert.lambert@cushwake.com

Lic. No. 01758074

**MAT MAT GILES**

562.310.2692

matmat.giles@cushwake.com

Lic. No. 02181091



# LAKESHORE

18111 VON KARMAN AVENUE

5<sup>th</sup> floor

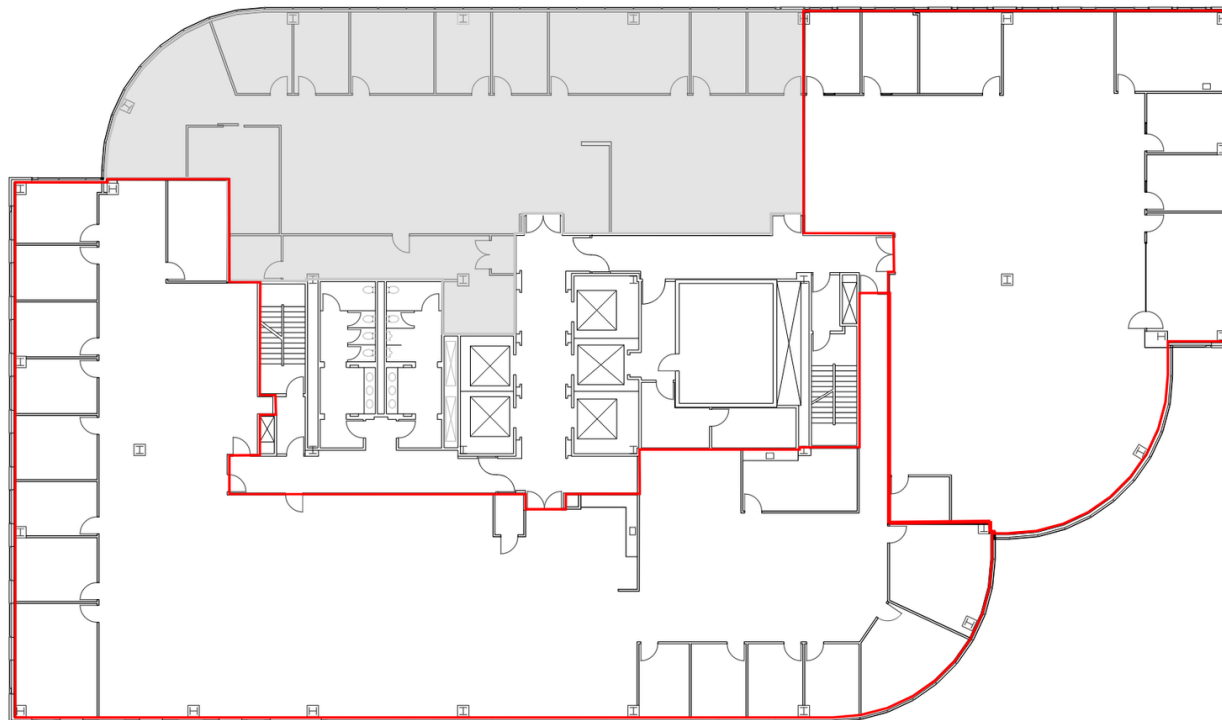
AIRPORT



SUITE 550 | 6,112 RSF

"AVAILABLE"

SUITE 570 | 6,881 RSF



405 FREEWAY

"AVAILABLE"  
SUITE 500 | 11,656 RSF

SCALE: N.T.S.



RICK KAPLAN

949.955.7643

rick.kaplan@cushwake.com

Lic. No. 00863069

ROBERT LAMBERT

949.930.9212

robert.lambert@cushwake.com

Lic. No. 01758074

MAT MAT GILES

562.310.2692

matmat.giles@cushwake.com

Lic. No. 02181091



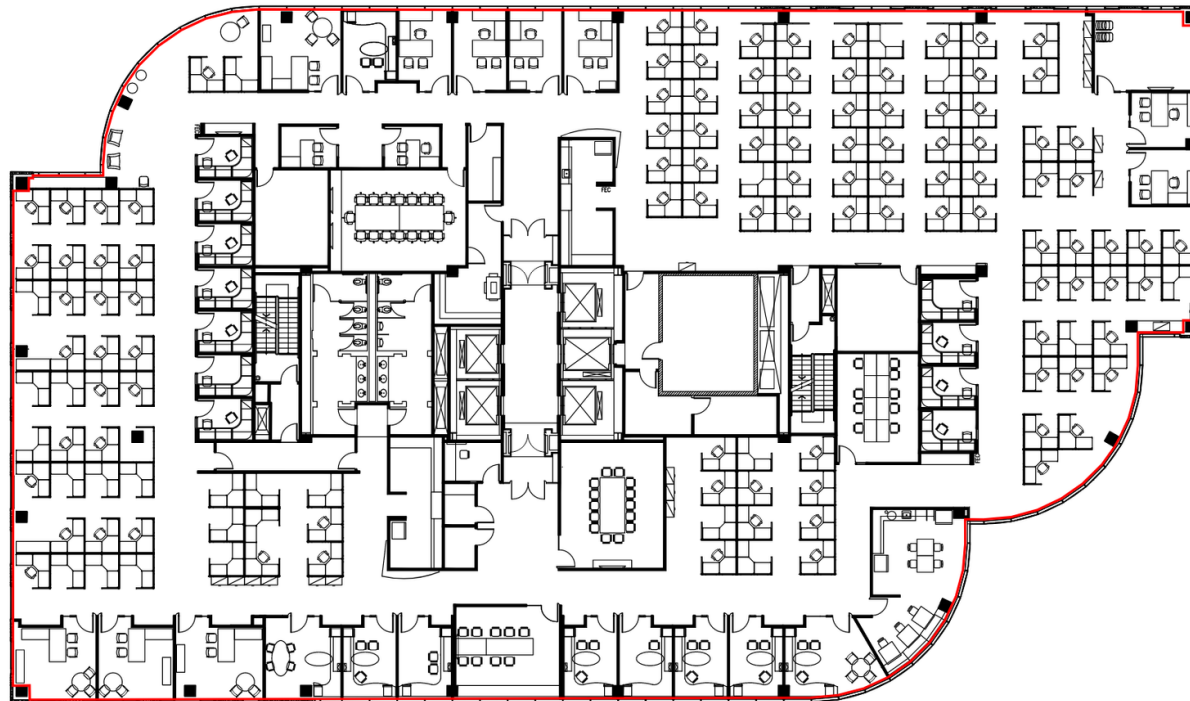


# LAKESHORE

18111 VON KARMAN AVENUE

7<sup>th</sup> floor

AIRPORT



405 FREEWAY

**"AVAILABLE"**  
SUITE 700 | 24,649 RSF

SCALE: N.T.S.



**RICK KAPLAN**

949.955.7643

[rick.kaplan@cushwake.com](mailto:rick.kaplan@cushwake.com)

Lic. No. 00863069

**ROBERT LAMBERT**

949.930.9212

[robert.lambert@cushwake.com](mailto:robert.lambert@cushwake.com)

Lic. No. 01758074

**MAT MAT GILES**

562.310.2692

[matmat.giles@cushwake.com](mailto:matmat.giles@cushwake.com)

Lic. No. 02181091



# LAKESHORE

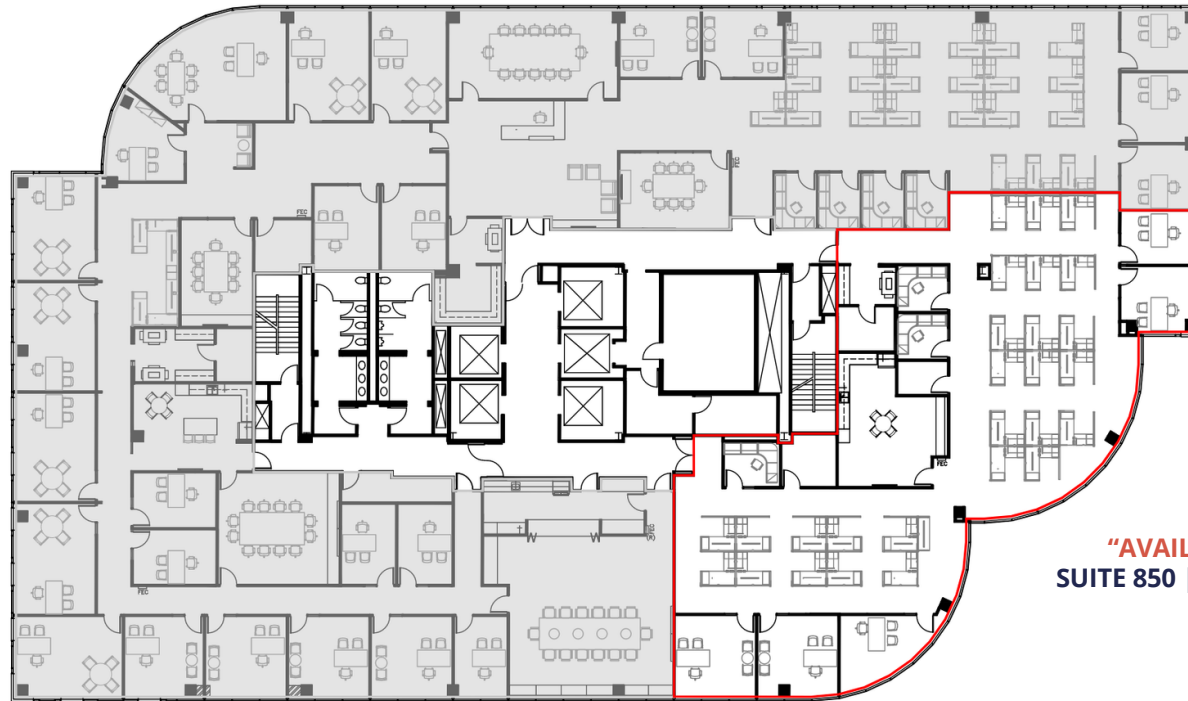
18111 VON KARMAN AVENUE

8<sup>th</sup> floor

AIRPORT



SUITE 800 | 18,188 RSF



405 FREEWAY

**"AVAILABLE"**  
SUITE 850 | 6,461 RSF

SCALE: N.T.S.



**RICK KAPLAN**

949.955.7643

rick.kaplan@cushwake.com

Lic. No. 00863069

**ROBERT LAMBERT**

949.930.9212

robert.lambert@cushwake.com

Lic. No. 01758074

**MAT MAT GILES**

562.310.2692

matmat.giles@cushwake.com

Lic. No. 02181091



# LAKESHORE

18111 VON KARMAN AVENUE

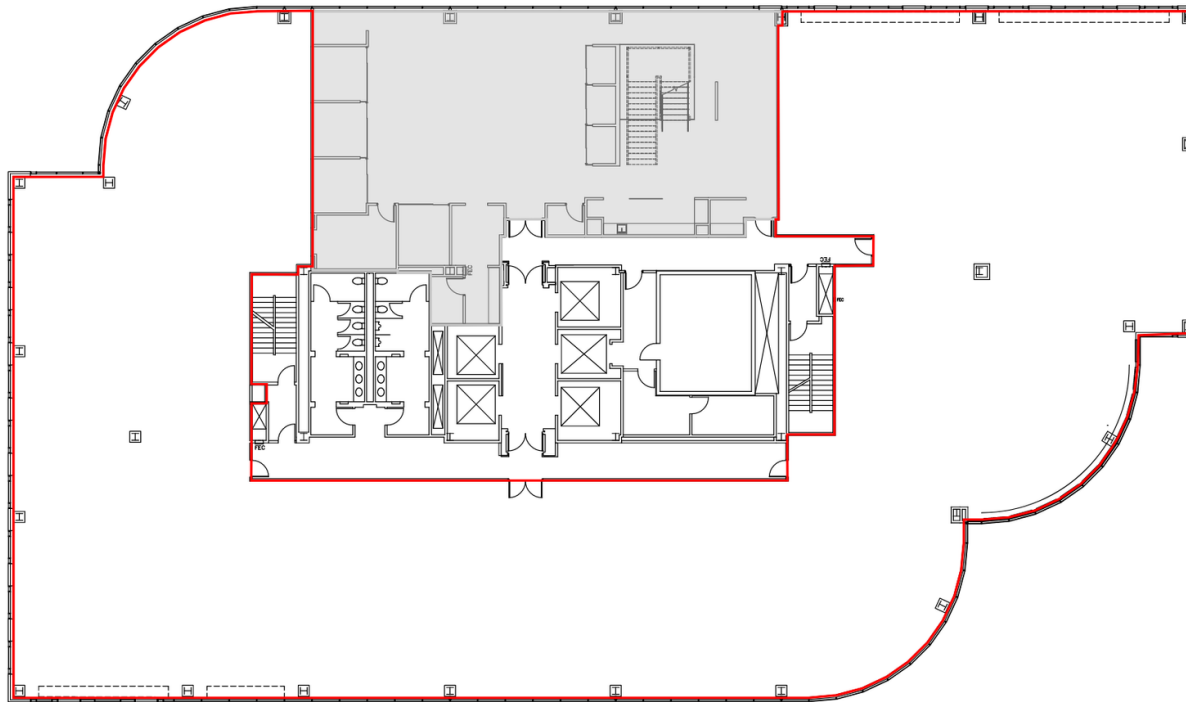
9<sup>th</sup> floor



AIRPORT



SUITE 950 | 4,612 RSF



405 FREEWAY



**"AVAILABLE"**  
SUITE 900 | 20,036 RSF

SCALE: N.T.S.



**RICK KAPLAN**

949.955.7643

rick.kaplan@cushwake.com

Lic. No. 00863069

**ROBERT LAMBERT**

949.930.9212

robert.lambert@cushwake.com

Lic. No. 01758074

**MAT MAT GILES**

562.310.2692

matmat.giles@cushwake.com

Lic. No. 02181091

