

MIZNER PARK OFFICE TOWER

225 NE Mizner Blvd Boca Raton, FL 33432



**CLASS A
OFFICE FOR
SUBLEASE**

3,870 SF

AVAILABILITY: Q1-26

**FLOOR TO CEILING
WINDOWS**

WITH EAST VIEWS



VIEW VIRTUAL TOUR



TOP FLOOR

SUBLEASE OPPORTUNITY

1

CONFERENCE ROOM,
LOUNGE, COPY ROOM
& PRIVATE BATHROOM

5

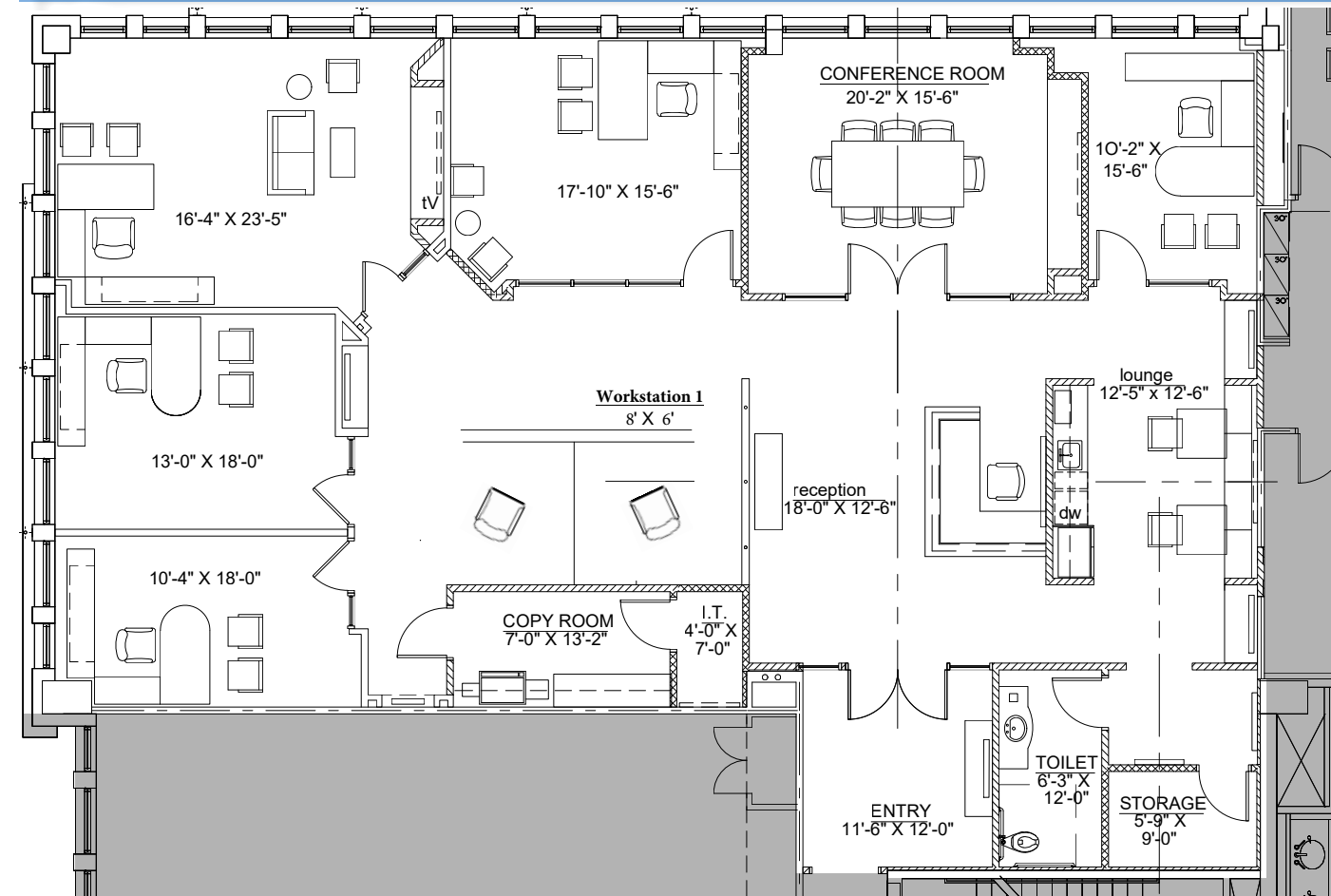
OFFICES



PROPERTY FEATURES

- Class A office space in the heart of prestigious Boca Raton
- Term through 8/31/2027
- Unobstructed east water views
- Concierge and security desk in lobby
- Free garage parking
- Six (6) reserved parking spaces
- Downtown convenience
- Walking distance to many shops, restaurants, and amenities
- In the heart of Mizner Park just north of Palmetto Park Road
- 0.5 Miles away from the Boca Raton Brightline Station

SUITE 700: 3,870 SF





brightline

0.5 MILES - 5 MINUTES



2.0 MILES - 10 MINUTES



3.1 MILES - 13 MINUTES



For more information, please contact:

JON BLUNK
 President
 561.288.9556
 jblunk@tcrefl.com

KYLE PASCIUTO-KENNY
 Director
 561.288.9256
 kpasciuto@tcrefl.com

TCRE
 www.tcrefl.com