

13309 BEACH AVE

Rare Warehouse/Flex Building
in Marina Del Rey

YOUR NAME HERE





BASICS



Size: 3,350 SF



Occupancy: Immediate



Asking Rate: \$2.95 MG



Parking: 4 Spaces



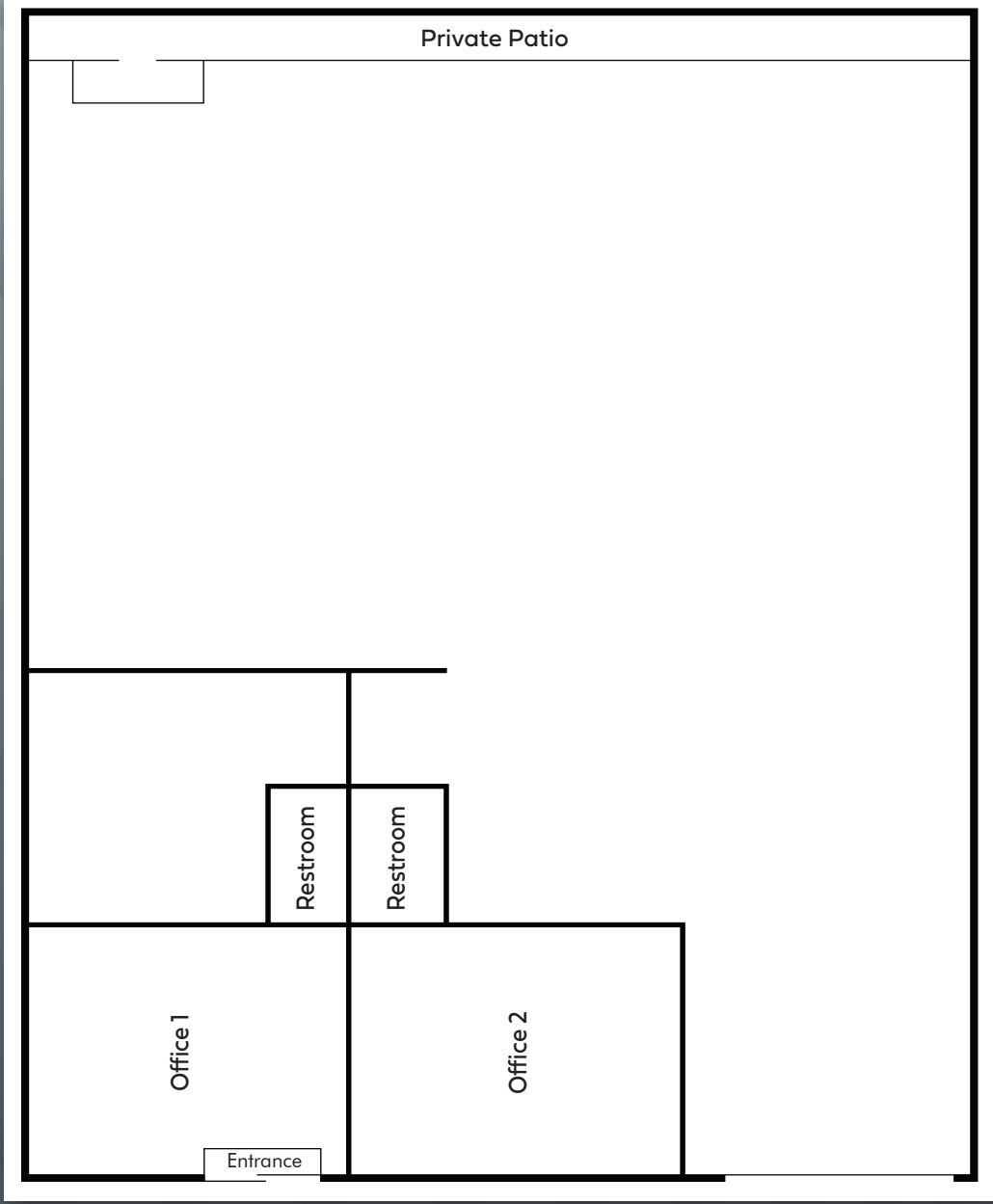
Term: Negotiable





- Industrial / Flex Space
- Concrete floors
- 14' high ceilings
- 1 GL rollup door 9' X 10.5'
- 4 parking spaces free-of-charge
- Features 3 offices and 2 restrooms
- Skylights throughout
- Located in an amenity rich area nearby In n Out, Chick-fil-A, Equinox, El Pollo Loco, Yard House, AMC, Costco, and more

HIGHLIGHTS



*not drawn to scale

FLOOR PLAN

Size: 3,350 SF



13309 BEACH AVE

Contacts:

Taylor Watson

Lic. 01958238

+1 310 550 2624

taylor.watson@cbre.com

Chris Taverner

Lic. 02084449

+1 310 550 2545

chris.taverner@cbre.com

CBRE

© 2026 CBRE, Inc. All rights reserved. This information has been obtained from sources believed reliable, but has not been verified for accuracy or completeness. You should conduct a careful, independent investigation of the property and verify all information. Any reliance on this information is solely at your own risk. CBRE and the CBRE logo are service marks of CBRE, Inc. All other marks displayed on this document are the property of their respective owners. Photos herein are the property of their respective owners and use of these images without the express written consent of the owner is prohibited.

