

**HARVARD SQUARE
2180 HARVARD STREET
SACRAMENTO, CA**

FOR LEASE

3,944 RSF - 9,492 RSF OFFICE SPACES

ETHAN CONRAD
PROPERTIES INC.

NOW REMODELED

FOR MORE INFORMATION CONTACT:

Grant Keeney
DRE: #00891996
grant@ethanconradprop.com

Sandy Rodriguez
DRE: #01249030
sarodriguez@ethanconradprop.com

LEASES SIGNED!

PORTER | SCOTT
ATTORNEYS

Regus

VIEW VIRTUAL TOUR

PROPERTY HIGHLIGHT VIDEO

916.779.1000

ETHAN CONRAD PROPERTIES, INC
1300 NATIONAL DRIVE, SUITE 100 | SACRAMENTO CA, 95834 | 916.779.1000
www.ethanconradprop.com

FEATURES:

- Premiere Class-A office building in Point West
- Large conference room available to all tenants
- Covered parking available
- Adjacent to Capital City freeway allows efficient regional access to I-80 and I-5 freeways
- Excellent visibility and signage on Capital City freeway

PROPERTY DETAILS:

Harvard Square is ±160,701 SF beautiful five-story steel-frame building office property in Point West. It is one of the few suburban Sacramento office properties with a multi-level parking structure. Arden Fair Mall and a host of retail amenities are nearby.



SUITES AVAILABLE:

SUITE:	RSF:	LEASE RATE:	RENT:	
Suite 200	6,904 RSF	\$1.95 PSF, FS	\$13,463.00	VIEW VIRTUAL TOUR
Suite 375	6,524 RSF	\$1.95 PSF, FS	\$12,722.00	
Suite 400	7,421 RSF	\$1.95 PSF, FS	\$14,471.00	
Suite 450	3,944 RSF	\$2.05 PSF, FS	\$ 8,085.00	VIEW VIRTUAL TOUR
Suite 460*	9,492 RSF	\$1.95 PSF, FS	\$18,509.00	VIEW VIRTUAL TOUR

Suites can be furnished for an additional \$0.10 PSF (Suites 400 & 450) and \$0.15 PSF (Suite 460).

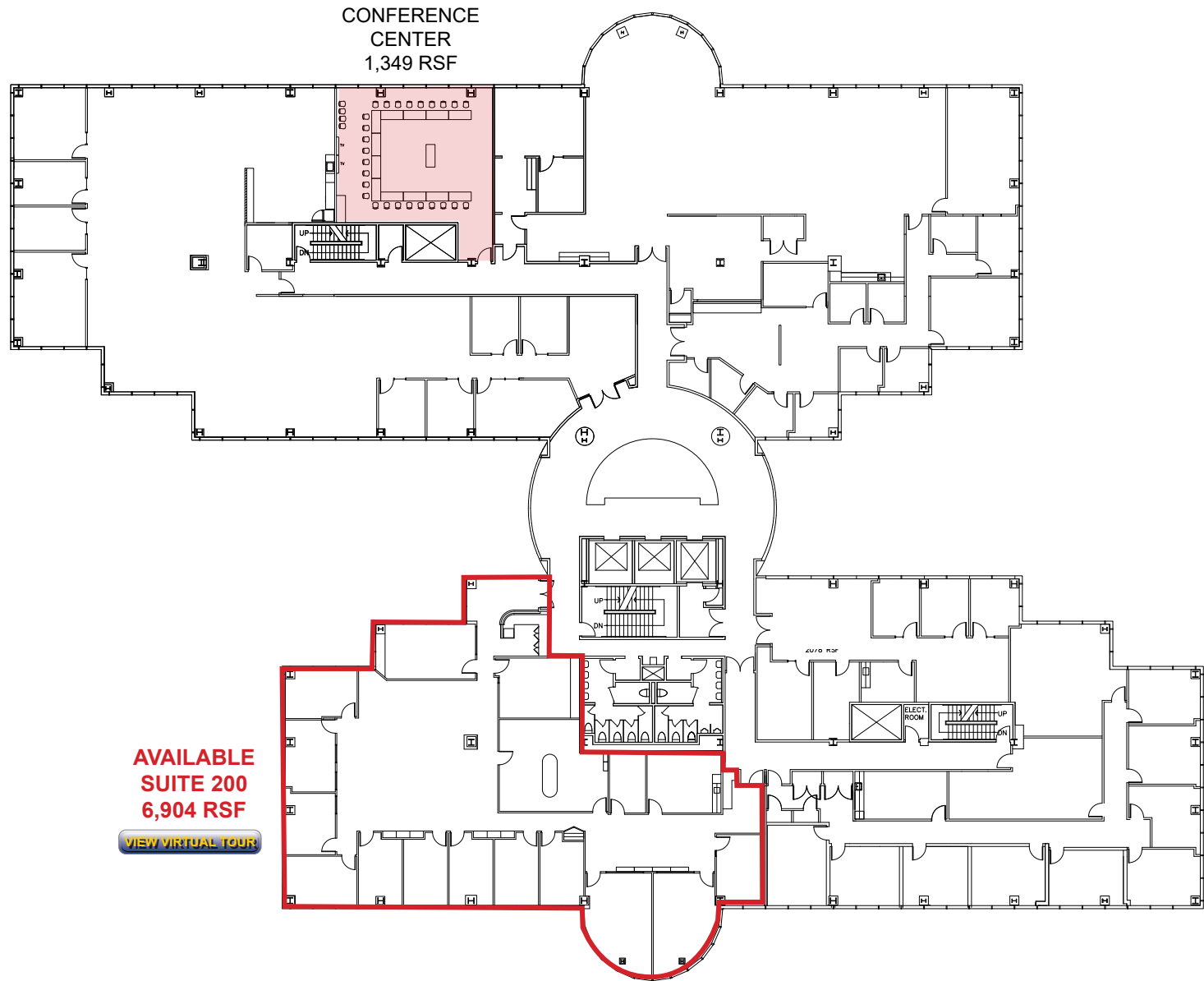
Watch Property Highlight on Youtube
[Click Here](#)

ETHAN CONRAD PROPERTIES, INC.

1300 NATIONAL DRIVE, SUITE 100 | SACRAMENTO CA, 95834 | 916.779.1000
 www.ethanconradprop.com

The information contained herein has been obtained from sources we believe to be reliable. However, we cannot guarantee, warrant or represent its accuracy and all information is subject to error, change or withdrawal. An interested party and their advisors should conduct an independent investigation of the property to determine to your satisfaction the suitability of the property for your needs.

2ND FLOOR PLAN

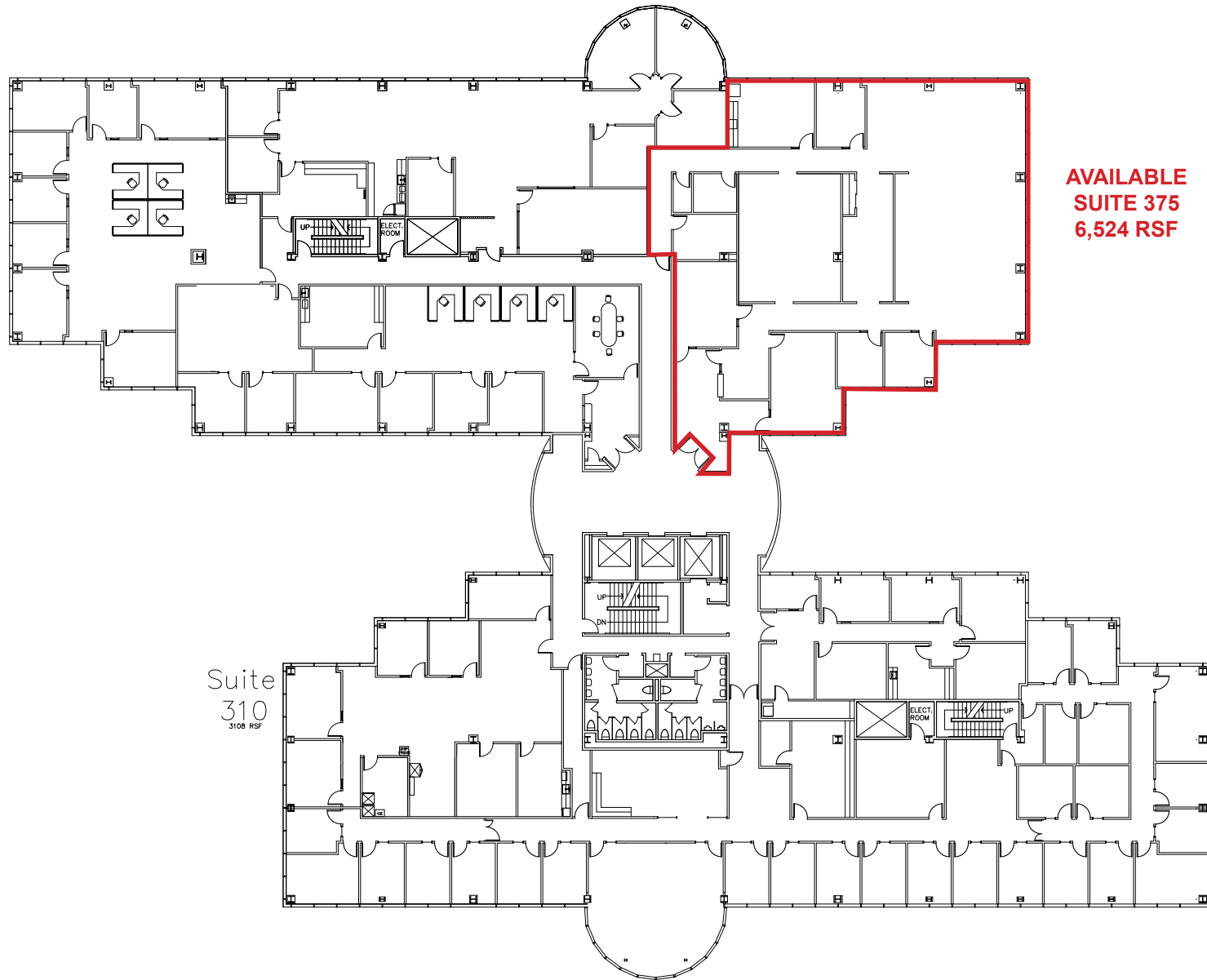


**AVAILABLE
SUITE 200
6,904 RSF**

[VIEW VIRTUAL TOUR](#)

*Available with 30 days' notice.

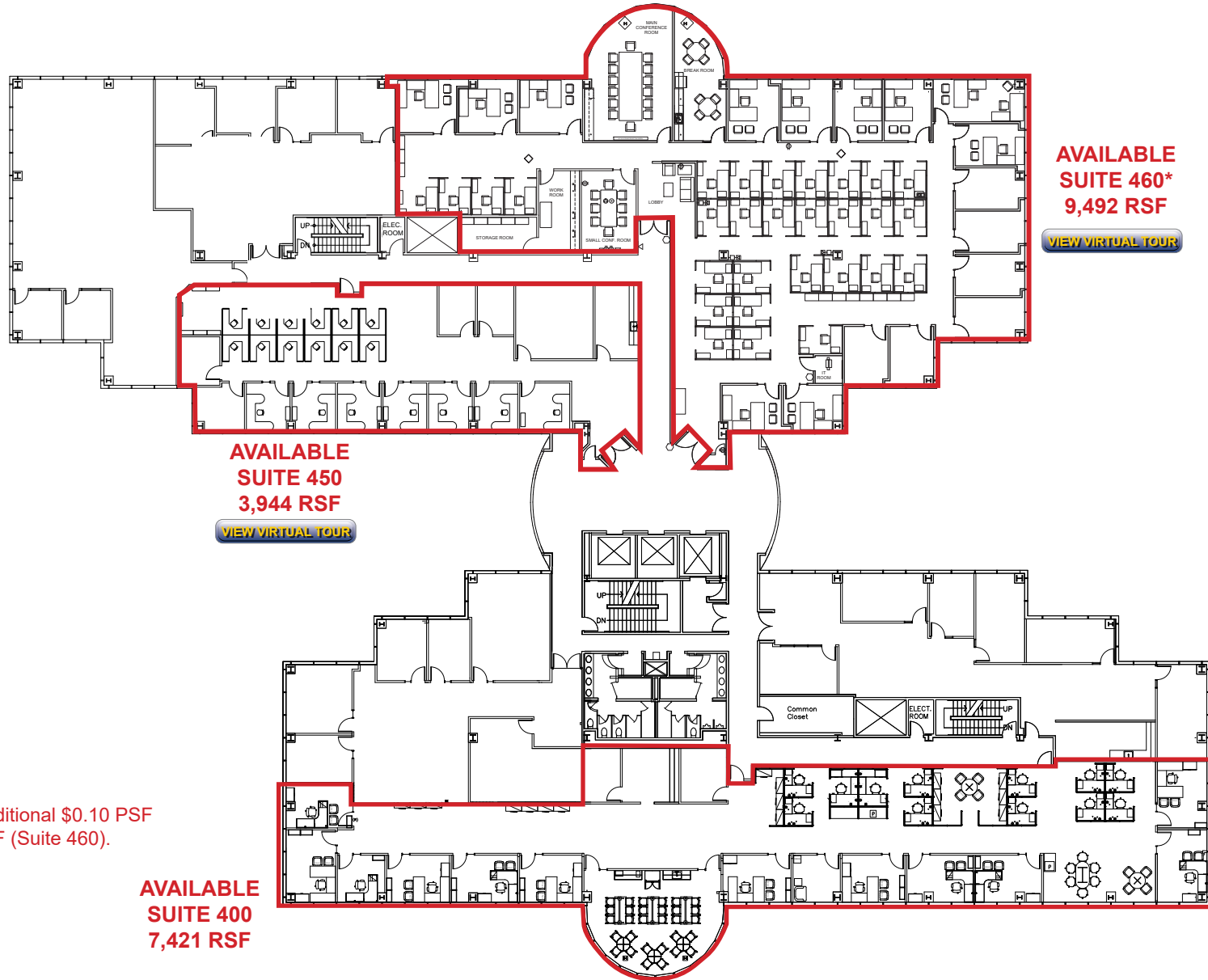
3RD FLOOR PLAN



AVAILABLE
SUITE 375
6,524 RSF

Suite
310
3108 RSF

4TH FLOOR PLAN



**AVAILABLE
SUITE 460*
9,492 RSF**
[VIEW VIRTUAL TOUR](#)

**AVAILABLE
SUITE 450
3,944 RSF**
[VIEW VIRTUAL TOUR](#)

**AVAILABLE
SUITE 400
7,421 RSF**

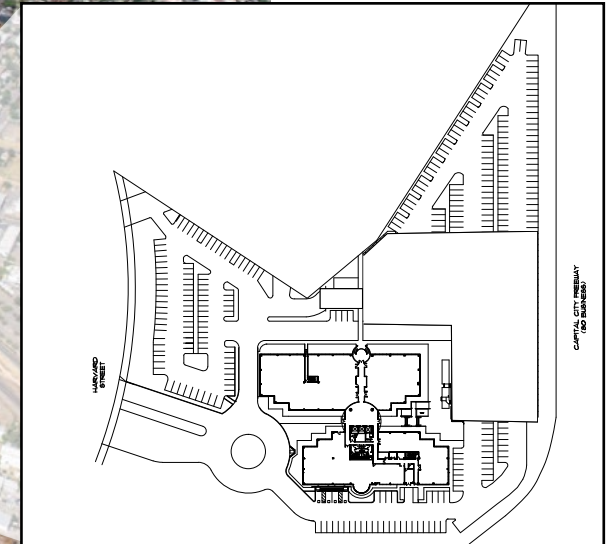
Suites can be furnished for an additional \$0.10 PSF (Suites 400 & 450) and \$0.15 PSF (Suite 460).

*Available with 30 days' notice.

The information contained herein has been obtained from sources we believe to be reliable. However, we cannot guarantee, warrant or represent its accuracy and all information is subject to error, change or withdrawal. An interested party and their advisors should conduct an independent investigation of the property to determine to your satisfaction the suitability of the property for your needs.

FOR LEASE

HARVARD SQUARE
2180 HARVARD STREET
SACRAMENTO, CA



ETHAN CONRAD PROPERTIES, INC.
1300 NATIONAL DRIVE, SUITE 100 | SACRAMENTO CA, 95834 | 916.779.1000
www.ethanconradprop.com

The information contained herein has been obtained from sources we believe to be reliable. However, we cannot guarantee, warrant or represent its accuracy and all information is subject to error, change or withdrawal. An interested party and their advisors should conduct an independent investigation of the property to determine to your satisfaction the suitability of the property for your needs.

FOR LEASE

HARVARD SQUARE
2180 HARVARD STREET
SACRAMENTO, CA



ETHAN CONRAD PROPERTIES, INC.

1300 NATIONAL DRIVE, SUITE 100 | SACRAMENTO CA, 95834 | 916.779.1000

www.ethanconradprop.com

The information contained herein has been obtained from sources we believe to be reliable. However, we cannot guarantee, warrant or represent its accuracy and all information is subject to error, change or withdrawal. An interested party and their advisors should conduct an independent investigation of the property to determine to your satisfaction the suitability of the property for your needs.